



scan event details

# OECD Local Development Forum

## Better strategies for stronger communities

15-17 June 2022 | Cork, Ireland

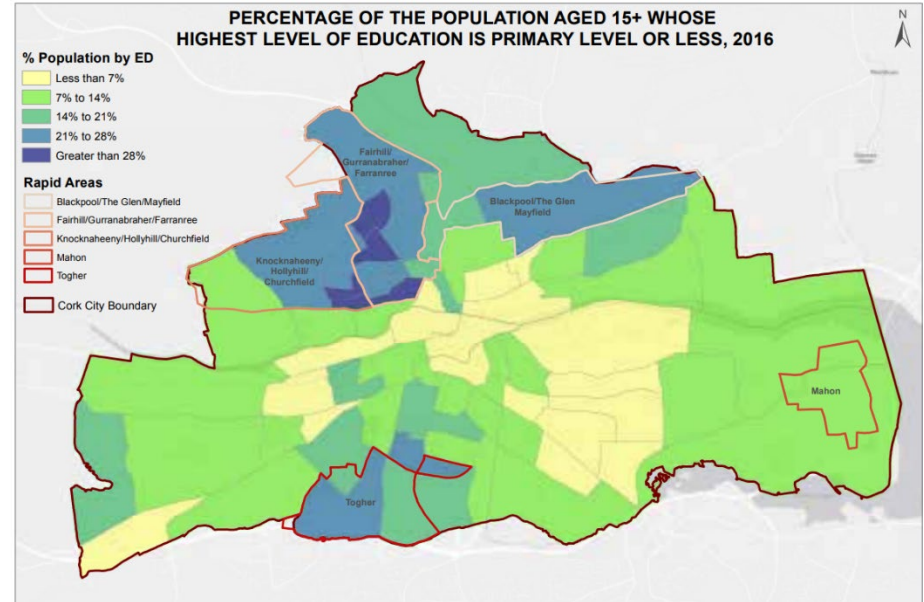
#GoLocal

# Welcome



# What's the issue ?

- *Persistent **Educational Disadvantage** - Unequal access and unequal outcomes*
- *Under-representation in higher education and under-achievement by people from identified communities*
- *'Unjust Design' in Education is perpetuating inequality, and causing low expectations among families in specific communities*
- *A 'Wicked' problem*



# What's the response?



is féidir leat ~ leaving no one behind

Formed after initial online Seminar 2020 & Focus Group workshop 2021

- Grown over a series of 8 open events, online and in-person;
- Each event highlights different Access themes;
- Each features a mix of good practice examples and learners inputs.

Over 300 Network members engaged to date.

CAN works collaboratively in Cork City and region through:

- Creating an Open Forum of Equal partners that meets 4 times yearly;
- Sharing of initiatives that tackle educational disadvantage across the life cycle;
- Identifying issues that perpetuate barriers to Access and Progression;
- Establishing cross sectoral Issue based sub-groups;
- Creating solidarity and Links between committed Access partners.



Established and lead by Cork Learning City partners:  
Cork Education and Training Board (CETB), Munster Technological University (MTU), University College Cork (UCC) and Cork City Council, with partners from Industry, Cork Chamber of Commerce and the Trade Union Movement.

# What can others learn?

- *The **CAN** model is transferable*
- *The **voice of the learner**, giving personal experience of access and success, can inspire, inform and motivate peer learning at organisational and personal levels*
- *Efforts to tackle under-representation and under-achievement in education or training is stronger when it takes a **cross-sectoral, inter-agency approach**. We work with 4 broad pillars of Access through –*
  - **Further and Higher Education**
  - **Community**
  - **The Workplace**
  - **Schools**
- *Taking a **strengths based approach**, focussing on ‘Access’ as a positive aspiration vs ‘Educational Disadvantage’ as a deficit, and*
- *A shared sense of **commitment to improving our place for our people** has created an energetic and enthusiastic response to **tackling a ‘Wicked’ problem***



# What do we need to learn?

- *CAN has already engaged with guest speakers from Scotland and the USA.*

*Are there any similar initiatives that are place based in other countries, cities or regions that we can link with and learn from?*

- *CAN has linked with the Gardner Institute in the USA. We are exploring the value of a 'Declaration of Socially Just Design', are there any experiences of a similar approach in the room?*

- *CAN needs to keep learning from the experiences of people whose paths to education or training have been met with barriers...*

*What ideas can you share that will help us to maintain momentum and sustain our network?*





# OECD Local Development Forum

Better strategies for stronger communities

15-17 June 2022 | Cork, Ireland

#GoLocal

# Thank you!

