

LUDGATE HUB



*OECD Local Forum
Conference
June 15th 2022*



*Rural regeneration
through
digital transformation*



Skibbereen, West Cork, Ireland

Geography

Skibbereen is located in south west Cork.

It is a market town with a population of 2,700 serving a rural radius of approx 10,000 people

Distance from Dublin to Skibbereen is 340 Km. Driving time is 4 hours +

Distance from Cork city is 86 km. Driving time is 1 hr 20 mins

Nearest airport is Cork Airport

Nearest train station is Kent Station, Cork City

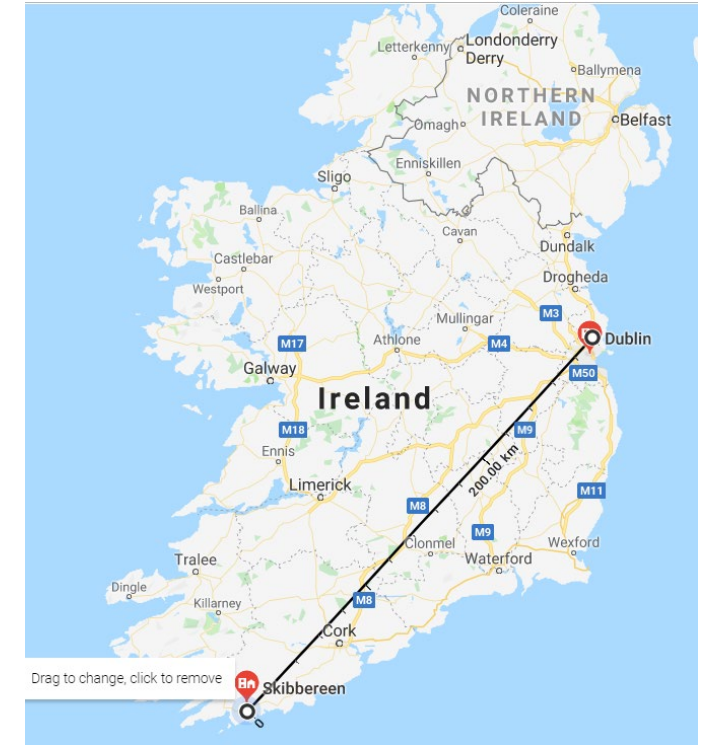
Nearest 3rd level is Cork city (UCC, MTU)

Historic Geo Challenges

Depopulated rural towns and villages

Lack of Knowledge Jobs

Brain Drain





Ludgate's Vision

To be a world leader in rural regeneration through digital transformation.

Ludgate's Mission

To enable sustainable knowledge jobs in the west cork region. by building digital capacity and capability, facilitating innovation & learning and embedding ourselves as a crucial asset within the local and wider community.

We strive to make Skibbereen, West Cork and the wider south west region a hotspot for startups, SME's and multinational remote workers to locate and prosper at a global level

Ludgate's Goal

To enable 500 knowledge jobs in west cork and increase the gdp of the region

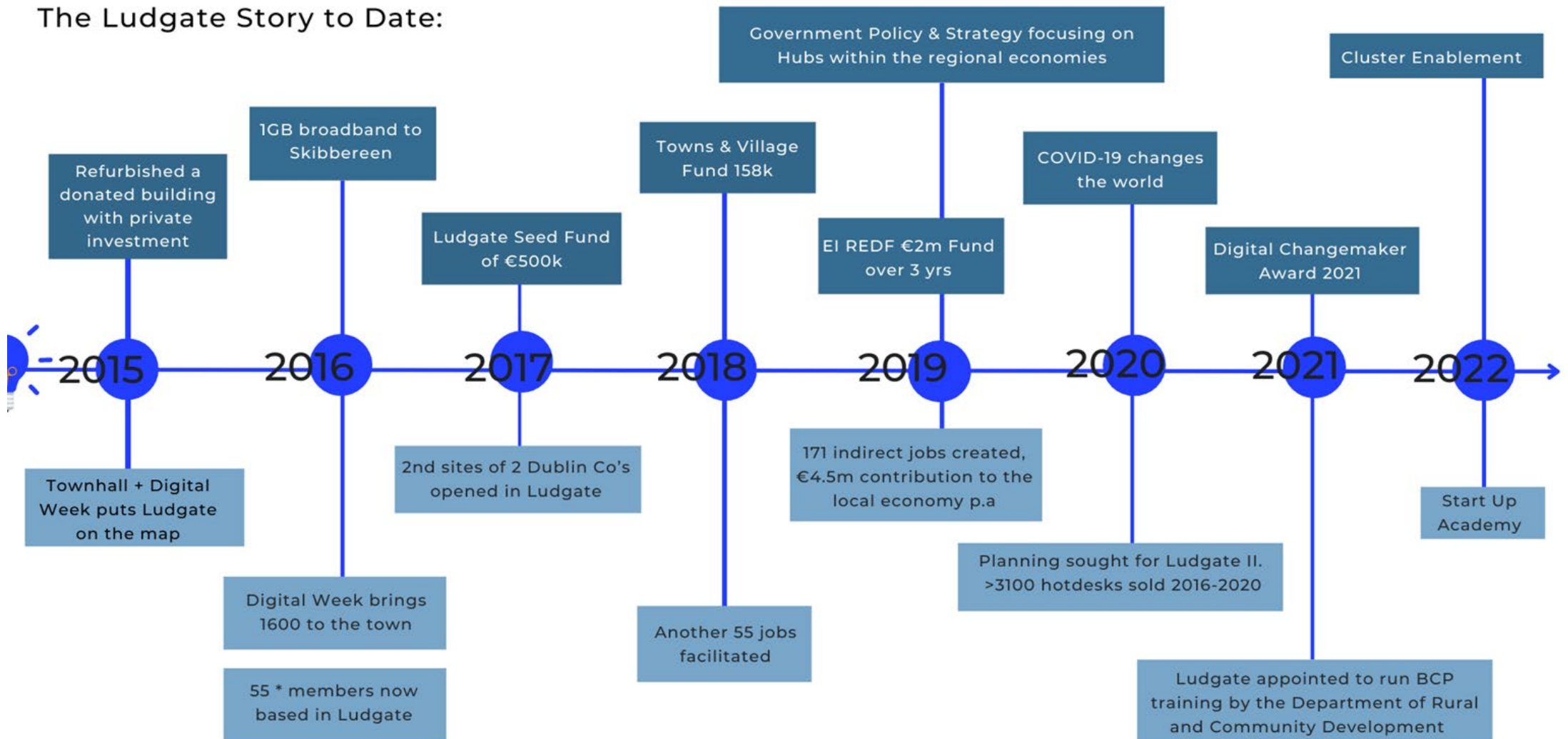


Our Roadmap






[Making the Impossible Possible - Video](#)

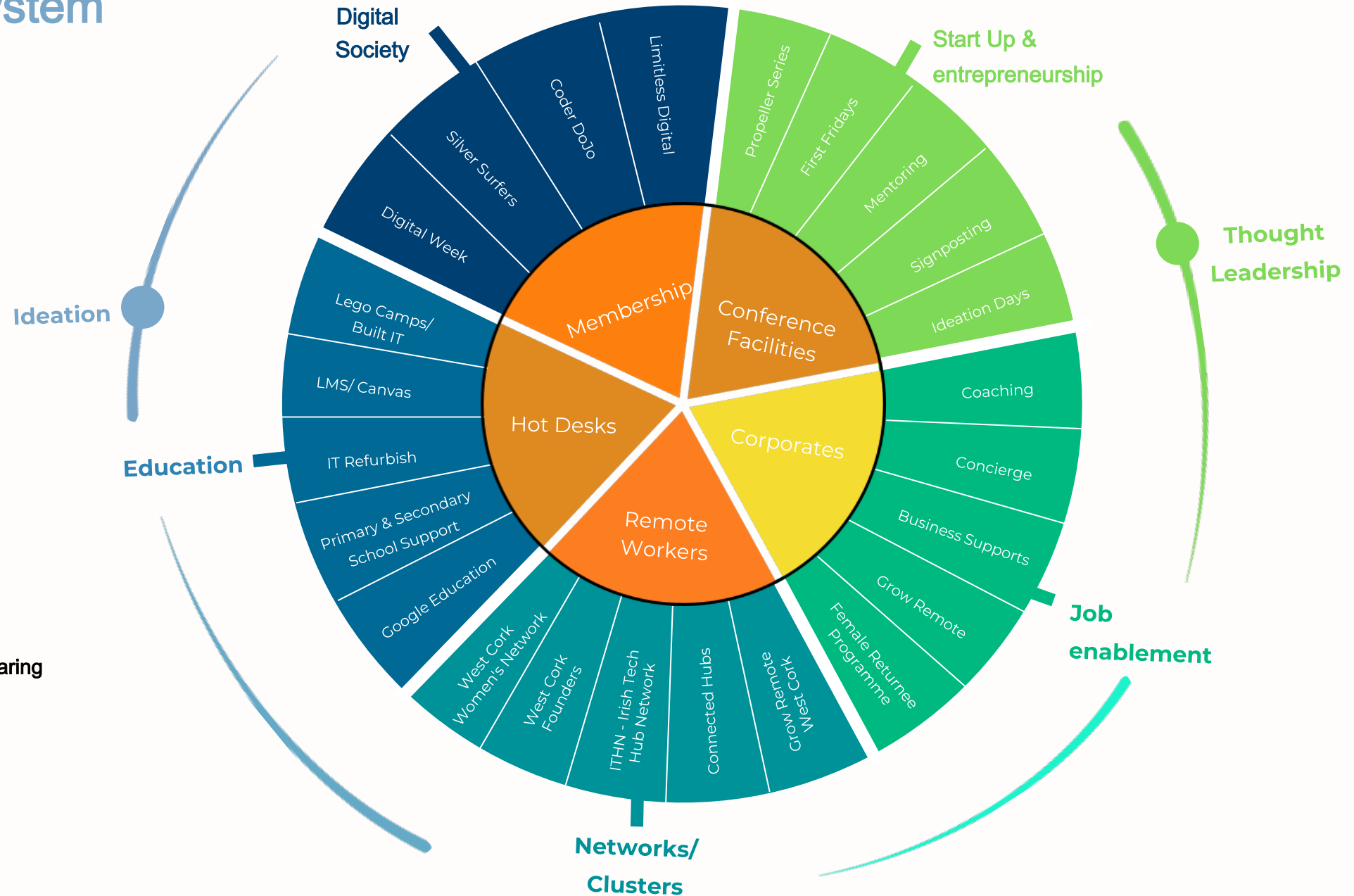


The Ludgate Story to Date:



Ludgate's Ecosystem

-  200 Direct Jobs
160 Indirect Jobs
- 360**
-  Full Time Members
- 120**
-  Part Time Members
- 50**
-  Hot Desks provided
- 3,860**
-  Monthly Knowledge Sharing Webinars



Government Strategy

Highlights from Progress Report 1

- High speed broadband installed in **182 schools**
- National Connected Hubs Network launched on **31 May 2021**, with **200** remote working hubs already included
- 48%** of IDA new investments going to regions
- €7 million** for New Streetscape Enhancement Measures
- A further **€106 million** in Rural Regeneration Funding approved
- 267** organisations supported under the COVID-19 Stability Fund
- 455 projects** approved under new **€70 million** Transitional LEADER Programme
- 52** projects approved under National Just Transition Fund
- TU of the Shannon: Midlands Midwest** established on 1 October 2021
- New or expanded **Local Link Services** in Kerry, Leitrim and Laois-Offaly
- €72.8m** allocated to local authorities for first ever major Rural Active Travel Programme
- First **Rural Youth Assembly** was held



An Roinn Forbartha Tuaithe agus Pobail
 Department of Rural and Community Development



An Roinn Fiontar, Trádála agus Fostaíochta
 Department of Enterprise, Trade and Employment

– Ambition 1: Export-focused Irish enterprises delivering growth across all regions



Key performance indicators

- +45,000 new jobs created by 2024
- Over two-thirds of new jobs created in regions outside of Dublin
- Total exports of €30bn by 2024, with more than 70% outside of UK



REGIONAL ENTERPRISE PLAN SOUTH-WEST

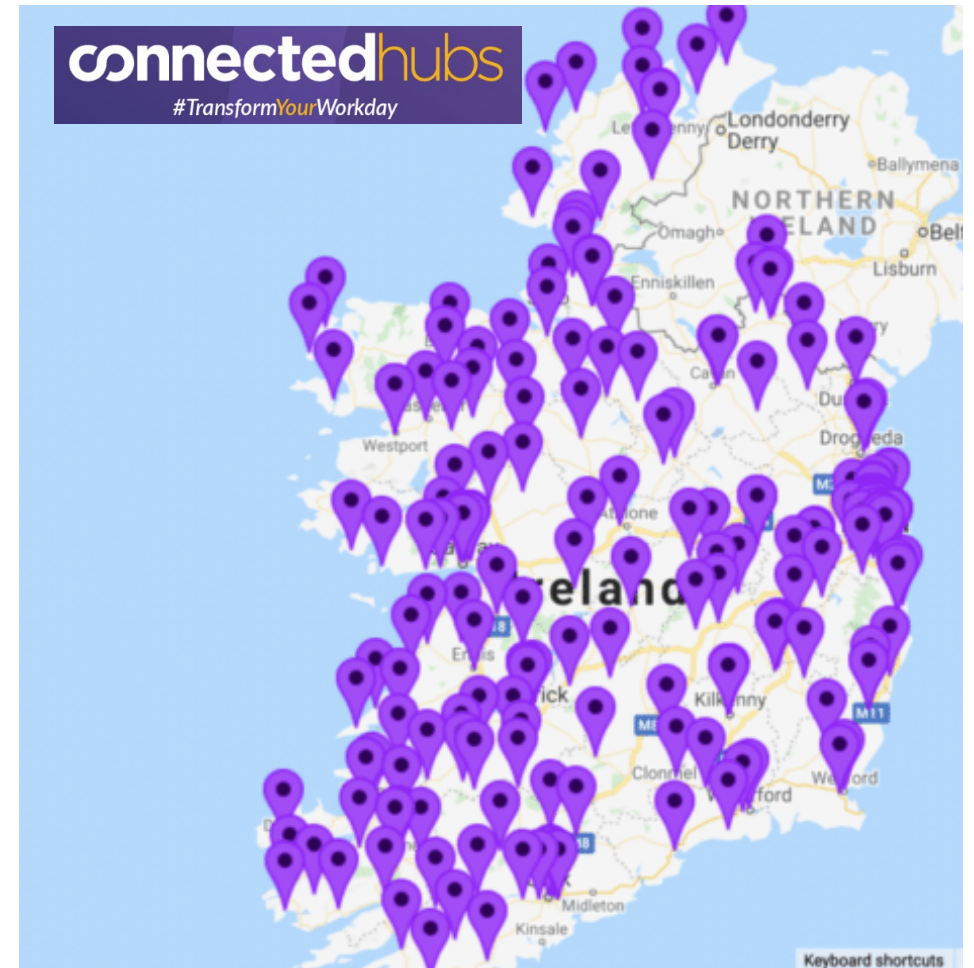
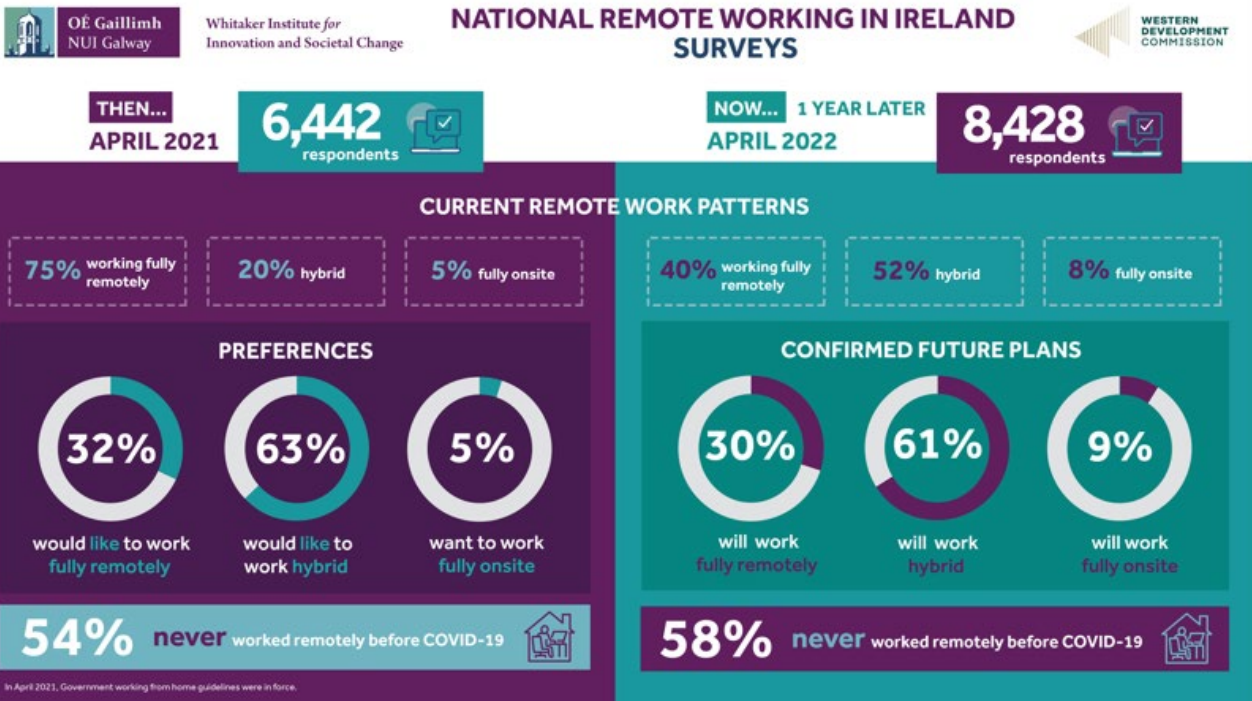
STRATEGIC OBJECTIVES SUMMARY

- 1 Enhance the enterprise eco-system across the region through innovation, entrepreneurship and digitalisation
- 2 Maximise the potential of digital enterprise and innovation hubs to support digitalisation, business growth, climate action and smart working
- 3 Support Cluster Organisations in driving the development and growth of enterprises
- 4 Bolster the South-West as a leader in sustainable Food Production and Agri-Tech through education, technology, and innovation
- 5 Embrace the opportunities of Climate Action in the Marine, Circular Bioeconomy, Tourism and Energy Sectors
- 6 Ensure a strong pipeline of talent in the region, focusing on sustainable high-quality jobs



Rialtas na hÉireann
 Government of Ireland

The Future of Work





LUDGATE HUB

Rural regeneration through digital transformation

