

# Worldwide ecommerce. Made powerful, made simple.

International expansion unlocks growth, but it comes with complexity. Different markets bring new rules, shopper expectations, and operational risk.

Brands need a model that scales reliably, protects margin, and keeps control of the brand.

## ESW powers every stage of the international ecommerce journey

Our technology, global infrastructure, and Merchant of Record coverage remove financial, legal, and operational barriers, enabling a low-risk and scalable model for worldwide ecommerce.

### Acquire



Localised marketing, demand insights, and onsite experiences that build trust and attract high-intent international shoppers across channels.

### Convert



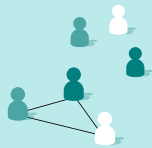
Localised buying experiences across checkout, agentic commerce and social or marketplace, keeping the journey consistent and on-brand.

### Fulfill



Fast, flexible order management, fulfillment and compliant delivery capabilities across regions, lowering cost and improving the shopper experience.

### Retain



Consistent on brand customer service and proactive communications that strengthen loyalty and increase lifetime value.

### Return



Optimised brand-led return journeys that reduce cost, protect margin and maintain customer satisfaction in every market.

## How we deliver differently



### Built around your goals

We embed into your teams, align to KPIs, and adapt our model to your strategy.



### On-brand everywhere

You own the story. We make sure it delivers locally without compromise.



### Flexible for scale

Enterprise technology plus operational expertise that grows with your ambitions.



### Driven by outcomes

Success measured in conversion, efficiency, and loyalty.

## Where we create measurable impact

45%



Up to 45% more revenue through localised strategies.

20%



20% cost reduction via optimised shipping, returns, and fulfillment.

29%



29% more repeat purchases from consistent, on-brand experiences.

Let's unlock your international growth together.