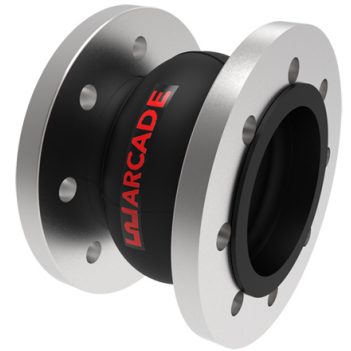


## COMPENSATEUR PREMIUM ARCADE

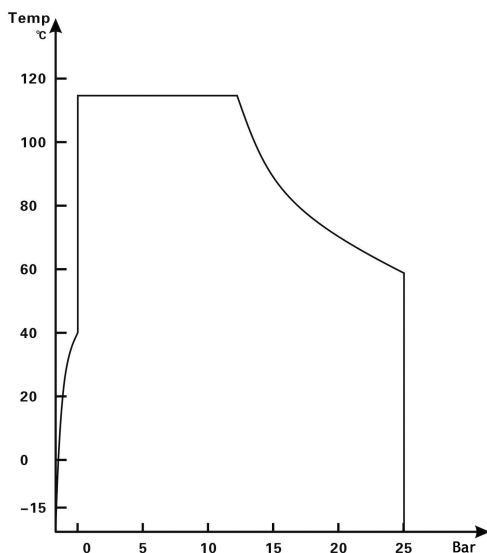
### ARCADE - SERIE K130S



	Tirants limiteurs :
<b>DN50-100</b>	>14 bar
<b>DN125-250</b>	>10 bar
<b>DN300</b>	>7 bar

### COMPENSATEUR EPDM - NITRILE - HYPALON - VITON

DN	Largeur	Mouvement axial		Mouv. latéral	Mouv. angulaire	Pression max	Aspiration
		Compression	Extension				
mm/pouce	mm	mm	mm	mm	°	Bar	mmCE
25 / 1"	130	12	9	12	15°	16	750
32 / 1"¼	130	12	9	12	15°	16	750
40 / 1"½	130	12	9	12	15°	16	750
50 / 2"	130	12	9	12	15°	16	750
65 / 2"½	130	12	9	12	15°	16	750
80 / 3"	130	12	9	12	15°	16	750
100 / 4"	130	14	9	14	15°	16	750
125 / 5"	130	14	9	14	15°	16	750
150 / 6"	130	14	9	14	10°	16	750
200 / 8"	130	14	9	14	10°	16	750
250 / 10"	130	14	9	14	10°	16	750
300 / 12"	130	16	9	16	10°	16	750



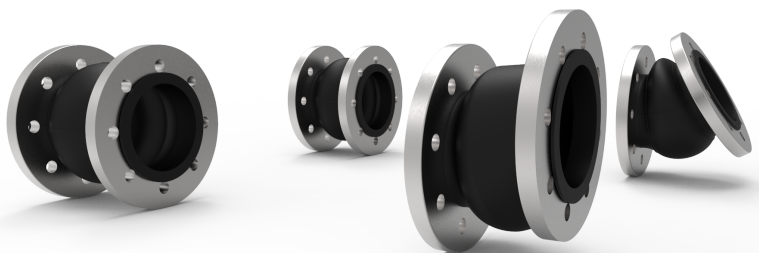
Ratio température / pression

Axial

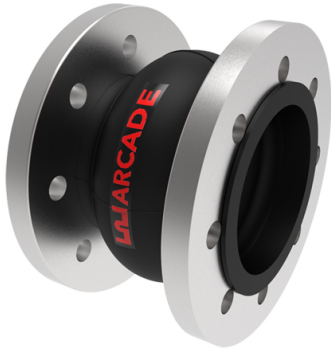
Repos

Latéral

Angulaire



## COMPENSATEUR PREMIUM ARCADE



### ARCADE - SERIE K150S/K200S

	Tirants limiteurs :
<b>DN50-100</b>	>14 bar
<b>DN125-250</b>	>10 bar
<b>DN300-350</b>	>7 bar
<b>DN400-DN1600</b>	>3,5 bar

### COMPENSATEUR EPDM - NITRILE - HYPALON - VITON

DN	Largeur	Mouvement axial		Mouv. latéral	Mouv. angulaire	Pression max 85°C	Aspiration Sans anneau
		Compression	Extension				
mm/ pouce	mm	mm	mm	mm	°	Bar	mmCE
25 / 1"	150	13	10	13	15°	16	750
32 / 1"¼	150	13	10	13	15°	16	750
40 / 1"½	150	13	10	13	15°	16	750
50 / 2"	150	13	10	13	15°	16	750
65 / 2"½	150	13	10	13	15°	16	750
80 / 3"	150	13	10	13	15°	16	750
100 / 4"	150	16	10	13	15°	16	750
125 / 5"	150	16	10	13	15°	16	750
150 / 6"	150	16	10	13	10°	16	750
200 / 8"	150	16	10	13	10°	16	750
250 / 10"	200	19	13	19	10°	10	750
300 / 12"	200	19	13	19	10°	10	750
350 / 14"	200	19	13	19	10°	10	500
400 / 16"	200	19	13	19	10°	10	500
450 / 18"	200	19	13	19	10°	10	500
500 / 20"	200	19	13	19	10°	10	500