



PRODUCT OVERVIEW

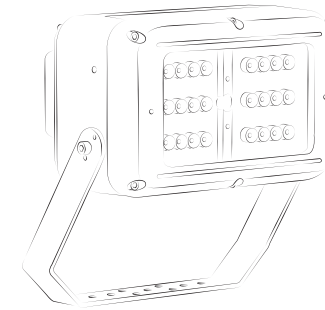


Hazardous Area Luminaires



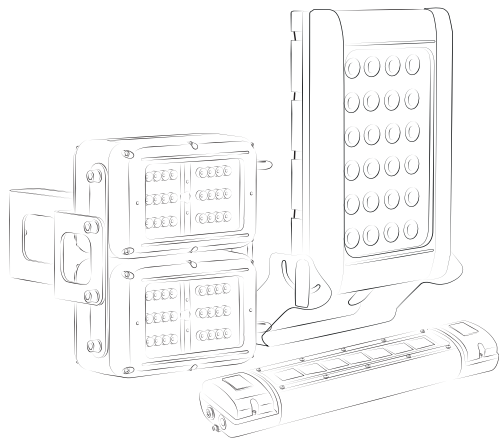
UK Designed and Manufactured

All Raytec hazardous area products are designed and manufactured in the UK and are ATEX, IEC Ex and UKEX approved. We're so confident in our quality that all our products come with a 5 year warranty. Raytec are also ISO9001 and ISO14001 certified.



Leaders in LED

Founded in 2005, each and every Raytec luminaire produced is built around LED technology, with over half a million products currently in service. We've used our expertise to create SPARTAN - a high performance range of hazardous area lighting which delivers class leading performance and reliability.



Full Product Family

Raytec manufacture a full range of hazardous area lighting with SPARTAN Flood, Linear, Bulkhead, Bay, Crane and Street lighting, meaning there's a solution for any application.

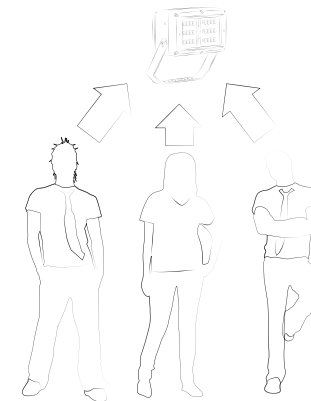
rayTEC®



Global Reach

Based at our HQ, near Newcastle, UK, we also have a sales office in Canada.

Our products are successfully deployed globally from the Arctic Circle to the Jungles of Borneo.



Lighting Specialists

Raytec and all our people are 100% focused on lighting. Everything from product design, to manufacture, to sales and after sales service is under one roof at our Global HQ.

FLOOD

Zone 1 6-10

Zone 2 / CID2 11-15

LINEAR

Zone 1 18-20

Zone 2 / CID2 21-23

RECESS

Zone 1 26-27

Zone 2 / CID2 28-29

BULKHEAD

Zone 1 31

Zone 2 / CID2 31

STREET

Zone 1 33

Zone 2 / CID2 33

CRANE

Zone 1 35

Zone 2 / CID2 35

BAY

Zone 1 37-39

Zone 2 / CID2 40-42

ACCESSORIES

Accessories 44

SPECIALIST PRODUCTS

Specialist Products 44

DESIGN SERVICES

Design Services 45

SPARTAN FLOOD



New!

Mid Power Flood Emergency

Intelligent Driver

High Power Flood versions feature an intelligent and fully programmable DALI enabled driver for seamless integration into your existing lighting infrastructure.

Robust

Housed in marine grade aluminium with A4 stainless steel fasteners and brackets, SPARTAN Flood is IP66 and IP67* rated and can survive in the most extreme environments.

Wide Operating Temperature

An operating temperature range of -40°C to +60°C* with a T4/T5/T6* rating means SPARTAN Flood is suitable for even the most challenging conditions.

Ultra-Powerful

SPARTAN Flood integrates the latest high power LEDs with Raytec's field proven LED management and optic technology. This delivers a high lumen output of up to 34,000 lumens.

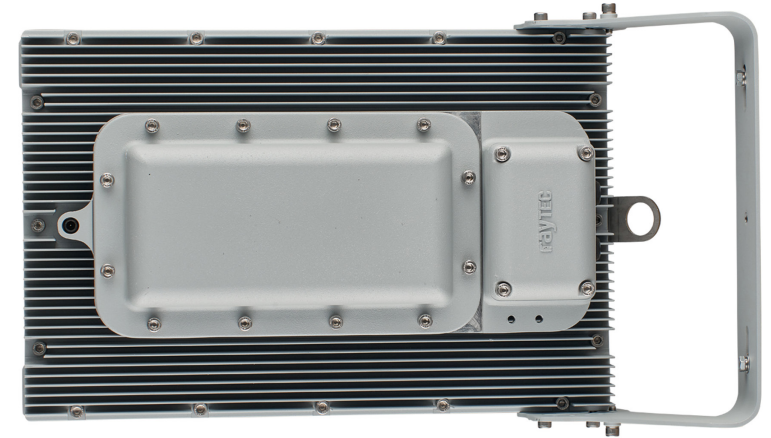


Multiple Beam Patterns

SPARTAN Flood is available with a variety of different beam patterns, both circular and elliptical*, ensuring light can be targeted where it's needed most.

LED Friendly

SPARTAN Flood uses CoolExtrude™ thermal management technology, ensuring a much cooler LED operating temperature. This provides up to 60% better heat dissipation compared to traditional lighting solutions and allows the product to operate for 10+ years in the most challenging environments.



Emergency Back-Up

SPARTAN Flood* is available as a high performance emergency variant, using an additional battery back-up module which can deliver up to 100% light output under emergency conditions.



Flexible Installation and Easy Maintenance

The modular design allows great flexibility – the entire PSU chassis can be removed and located remotely at ground level for areas with difficult access. Additionally the individual PSU modules can be easily accessed and replaced making servicing and inspection of all key components quicker and easier.





SPARTAN
HIGH POWER FLOOD HPFL30K



SPARTAN
HIGH POWER FLOOD HPFL25K



SPARTAN
HIGH POWER FLOOD HPFL20K

Certification	ATEX, IEC Ex and UKEX rated for Zone 1 (Gas) and Zone 21 (Dust) ABS Approved	ATEX, IEC Ex and UKEX rated for Zone 1 (Gas) and Zone 21 (Dust) ABS Approved	ATEX, IEC Ex and UKEX rated for Zone 1 (Gas) and Zone 21 (Dust) ABS Approved
Beam Angles	30° x 30° / 60° x 60° / 90° x 90°	30° x 30° / 60° x 60° / 90° x 90°	30° x 30° / 60° x 60° / 90° x 90°
Input	150-264V 50/60Hz AC/DC 110V variant available - contact Raytec	150-264V 50/60Hz AC/DC 110V variant available - contact Raytec	150-264V 50/60Hz AC/DC 110V variant available - contact Raytec
Beam Shape	Circular	Circular	Circular
Beam Angle System	Fixed	Fixed	Fixed
Consumption	300W	250W	200W
LED type	Platinum Elite Multi-Core SMT LEDs	Platinum Elite Multi-Core SMT LEDs	Platinum Elite Multi-Core SMT LEDs
Number of LEDS	24	24	24
Power output (luminous flux)	29,134 lm	24,278 lm	19,423 lm
Wavelength	White-Light	White-Light	White-Light
IP Rating	IP66	IP66	IP66
Temperature Range	-50°C to +50°C (-58°F to +122°F)	-50°C to +50°C (-58°F to +122°F)	-50°C to +50°C (-58°F to +122°F)
Colour Temperature (White-Light)	5,700K	5,700K	5,700K
Colour	Silver (RAL 9006)	Silver (RAL 9006)	Silver (RAL 9006)
Weight	23.5kg (51.8lbs)	23.5kg (51.8lbs)	23.5kg (51.8lbs)
Dimensions	639 x 350 x 215mm (25.2 x 13.8 x 8.5")	639 x 350 x 215mm (25.2 x 13.8 x 8.5")	639 x 350 x 215mm (25.2 x 13.8 x 8.5")
Additional Features	CoolExtrude™ Thermal Management Removable PSU and LED modules DALI/Dimming as Standard Access wiring system T4 Rating	CoolExtrude™ Thermal Management Removable PSU and LED modules DALI/Dimming as Standard Access wiring system T4 Rating	CoolExtrude™ Thermal Management Removable PSU and LED modules DALI/Dimming as Standard Access wiring system T4 Rating
Emergency Battery Back-up			
Battery			
Duration			
Charge Time			
Additional Features			
Part Codes			
Circular beam pattern	SPX-HPFL30K-W-3030 / SPX-HPFL30K-W-6060 / SPX-HPFL30K-W-9090	SPX-HPFL25K-W-3030 / SPX-HPFL25K-W-6060 / SPX-HPFL25K-W-9090	SPX-HPFL20K-W-3030 / SPX-HPFL20K-W-6060 / SPX-HPFL20K-W-9090
Elliptical beam pattern			



SPARTAN
MID POWER FLOOD MPFL15K



SPARTAN
MID POWER FLOOD
MPFL15K Emergency



SPARTAN
MID POWER FLOOD MPFL12.5K



SPARTAN
MID POWER FLOOD
MPFL12.5K Emergency



SPARTAN
MID POWER FLOOD MPFL10K

Certification	ATEX, IEC Ex and UKEX rated for Zone 1 (Gas) and Zone 21 (Dust) ABS Approved	ATEX, IEC Ex and UKEX rated for Zone 1 (Gas) and Zone 21 (Dust) ABS Approved	ATEX, IEC Ex and UKEX rated for Zone 1 (Gas) and Zone 21 (Dust) ABS Approved	ATEX, IEC Ex and UKEX rated for Zone 1 (Gas) and Zone 21 (Dust) ABS Approved	ATEX, IEC Ex and UKEX rated for Zone 1 (Gas) and Zone 21 (Dust) ABS Approved
Beam Angles	30° x 30° or 60° x 60° or 90° x 90°	30° x 30° or 60° x 60° or 90° x 90°	30° x 30° or 60° x 60° or 90° x 90°	30° x 30° or 60° x 60° or 90° x 90°	30° x 30° or 60° x 60° or 90° x 90°
Input	110-277V 50/60Hz AC only	110-277V 50/60Hz AC only	110-277V 50/60Hz AC only	110-277V 50/60Hz AC only	110-277V 50/60Hz AC only
Beam Shape	Circular	Circular	Circular	Circular	Circular
Beam Angle System	Fixed	Fixed	Fixed	Fixed	Fixed
Consumption	120W	125W	100W	105W	80W
LED type	Platinum Elite SMT LEDs	Platinum Elite SMT LEDs	Platinum Elite SMT LEDs	Platinum Elite SMT LEDs	Platinum Elite SMT LEDs
Number of LEDs	48	48	48	48	48
Power output (luminous flux)	15,547 lm	15,547 lm	13,059 lm	13,059 lm	10,448 lm
Wavelength	White-Light	White-Light	White-Light	White-Light	White-Light
IP Rating	IP66 & IP67	IP66 & IP67	IP66 & IP67	IP66 & IP67	IP66 & IP67
Temperature Range	-40°C to +60°C (-40°F to +140°F)	-20°C to +50°C (-4°F to +122°F)	-40°C to +60°C (-40°F to +140°F)	-20°C to +50°C (-4°F to +122°F)	-40°C to +60°C (-40°F to +140°F)
Colour Temperature (White-Light)	5,700K	5,700K	5,700K	5,700K	5,700K
Colour	Silver (RAL 9006)	Silver (RAL 9006)	Silver (RAL 9006)	Silver (RAL 9006)	Silver (RAL 9006)
Weight	13.2kg (29.1lbs)	16kg (35.2lbs)	13.2kg (29.1lbs)	16kg (35.2lbs)	13.2kg (29.1lbs)
Dimensions	609 x 350 x 109 (24 x 13.9 x 4.3")	609 x 350 x 119 (24 x 13.9 x 4.7")	609 x 350 x 109 (24 x 13.9 x 4.3")	609 x 350 x 119 (24 x 13.9 x 4.7")	609 x 350 x 109 (24 x 13.9 x 4.3")
Additional Features	Removable PSU Front access wiring system T4 Rating	Removable PSU Front access wiring system T4 Rating	Removable PSU Front access wiring system T4 Rating	Removable PSU Front access wiring system T4 Rating	Removable PSU Front access wiring system T4 Rating

Emergency Battery Back-up

Battery		NiMH 12V 6.0Ah		NiMH 12V 6.0Ah	
Duration		180 or 90 mins depending on variant Other options available		180 or 90 mins depending on variant Other options available	
Charge Time		20 Hours		20 Hours	
Additional Features					

Part Codes

Circular beam pattern	SPX-MPFL15K-W-3030 / SPX-MPFL15K-W-6060 / SPX-MPFL15K-W-9090	SPX-MPFL12K5-W-3030-EMX / SPX-MPFL15K-W-6060-EMX / SPX-MPFL15K-W-9090-EMX	SPX-MPFL125K-W-3030 / SPX-MPFL125K-W-6060 / SPX-MPFL125K-W-9090	SPX-MPFL12K5-W-3030-EMX / SPX-MPFL125K-W-6060-EMX / SPX-MPFL125K-W-9090-EMX	SPX-MPFL10K-W-3030 / SPX-MPFL10W-6060 / SPX-MPFL10K-W-9090
Elliptical beam pattern					



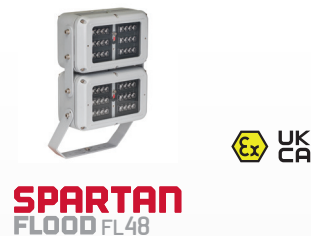
Certification	ATEX, IEC Ex and UKEX rated for Zone 1 (Gas) and Zone 21 (Dust)	ATEX, IEC Ex and UKEX rated for Zone 1 (Gas) and Zone 21 (Dust) ABS Approved	ATEX, IEC Ex and UKEX rated for Zone 1 (Gas) and Zone 21 (Dust)	ATEX, IEC Ex and UKEX rated for Zone 1 (Gas) and Zone 21 (Dust) ABS Approved	ATEX, IEC Ex and UKEX rated for Zone 1 (Gas) and Zone 21 (Dust)
Beam Angles	30° x 30° or 60° x 60° or 90° x 90°	30° x 30° or 60° x 60° or 90° x 90°	30° x 30° or 60° x 60° or 90° x 90°	30° x 30° or 60° x 60° or 90° x 90°	30° x 30° or 60° x 60° or 90° x 90°
Input	110-277V 50/60Hz AC only	110-277V 50/60Hz AC only	110-277V 50/60Hz AC only	110-277V 50/60Hz AC only	110-277V 50/60Hz AC only
Beam Shape	Circular	Circular	Circular	Circular	Circular
Beam Angle System	Fixed	Fixed	Fixed	Fixed	Fixed
Consumption	85W	60W	65W	40W	45W
LED type	Platinum Elite SMT LEDs	Platinum Elite SMT LEDs	Platinum Elite SMT LEDs	Platinum Elite SMT LEDs	Platinum Elite SMT LEDs
Number of LEDs	48	24	24	24	24
Power output (luminous flux)	10,448 lm	7,774 lm	7,774 lm	5,223 lm	5,223 lm
Wavelength	White-Light	White-Light	White-Light	White-Light	White-Light
IP Rating	IP66 & IP67	IP66 & IP67	IP66 & IP67	IP66 & IP67	IP66 & IP67
Temperature Range	-20°C to +50°C (-4°F to +122°F)	-40°C to +60°C (-40°F to +140°F)	-20°C to +50°C (-4°F to +122°F)	-40°C to +60°C (-40°F to +140°F)	-20°C to +50°C (-4°F to +122°F)
Colour Temperature (White-Light)	5,700K	5,700K	5,700K	5,700K	5,700K
Colour	Silver (RAL 9006)	Silver (RAL 9006)	Silver (RAL 9006)	Silver (RAL 9006)	Silver (RAL 9006)
Weight	16kg (35.2lbs)	13.2kg (29.1lbs)	16kg (35.2lbs)	13.2kg (29.1lbs)	16kg (35.2lbs)
Dimensions	609 x 350 x 119 (24 x 13.9 x 4.7")	609 x 350 x 109 (24 x 13.9 x 4.3")	609 x 350 x 119 (24 x 13.9 x 4.7")	609 x 350 x 109 (24 x 13.9 x 4.3")	609 x 350 x 119 (24 x 13.9 x 4.7")
Additional Features	Removable PSU Front access wiring system T4 Rating	Removable PSU Front access wiring system T4 Rating	Removable PSU Front access wiring system T4 Rating	Removable PSU Front access wiring system T4 Rating	Removable PSU Front access wiring system T4 Rating

Emergency Battery Back-up

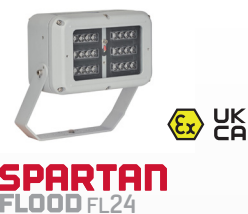
Battery	NiMH 12V 6.0Ah	NiMH 12V 6.0Ah	NiMH 12V 6.0Ah	NiMH 12V 6.0Ah
Duration	180 or 90 mins depending on variant Other options available	180 or 90 mins depending on variant Other options available	180 or 90 mins depending on variant Other options available	180 or 90 mins depending on variant Other options available
Charge Time	20 Hours	20 Hours	20 Hours	20 Hours
Additional Features				

Part Codes

Circular beam pattern	SPX-MPFL10K-W-3030-EMX / SPX-MPFL10W-6060-EMX / SPX-MPFL10K-W-9090-EMX	SPX-MPFL7K5-W-3030 / SPX-MPFL75K-W-6060 / SPX-MPFL75K-W-9090	SPX-MPFL7K5-W-3030-EMX / SPX-MPFL7K5-W-6060-EMX / SPX-MPFL7K5-W-9090-EMX	SPX-MPFL5K-W-3030 / SPX-MPFL5K-W-6060 / SPX-MPFL5K-W-9090	SPX-MPFL5K-W-3030-EMX / SPX-MPFL5K-W-6060-EMX / SPX-MPFL5K-W-9090-EMX
Elliptical beam pattern					



Certification	ATEX, IEC Ex and UKEX rated for Zone 1 (Gas) and Zone 21 (Dust)	ATEX, IEC Ex and UKEX rated for Zone 1 (Gas) and Zone 21 (Dust)
Beam Angles	10° x 10° / 30° x 30° / 50° x 50° and 120° x 120° (circular) 35° x 10° / 60 x25° / 80° x 30° and 120° x 50° (elliptical)	10° x 10° / 30° x 30° / 50° x 50° and 120° x 120° (circular) 35° x 10° / 60 x25° / 80° x 30° and 120° x 50° (elliptical)
Input	110-254V 50/60Hz AC only Low voltage: 18-48V AC and 18-69V DC	110-254V 50/60Hz AC only
Beam Shape	Elliptical or Circular	Elliptical or Circular
Beam Angle System	VARIO interchangeable lens system (elliptical) / Fixed (circular)	VARIO interchangeable lens system (elliptical) / Fixed (circular)
Consumption	136W	139W
LED type	Platinum Elite SMT LEDs	Platinum Elite SMT LEDs
Number of LEDs	48	48
Power output (luminous flux)	Up to 16,900 lm – circular beam patterns Up to 15,900 lm – elliptical beam patterns (VARIO)	Up to 16,900 lm – circular beam patterns Up to 15,900 lm – elliptical beam patterns (VARIO)
Wavelength	White-Light (also available in Infra-Red)	White-Light (also available in Infra-Red)
IP Rating	IP66 & IP67	IP66 & IP67
Temperature Range	-52°C to +55°C (-62°F to +131°F)	-20°C to +55°C (-4°F to +131°F)
Colour Temperature (White-Light)	6,000K+	6,000K+
Colour	Silver (RAL 9006)	Silver (RAL 9006) Emergency Cover - Red (RAL 3024)
Weight	16kg (35.2lbs)	20kg (44lbs)
Dimensions	291 x 502 x 158mm (11.5 x 19.8x 6.2")	291 x 502 x 219mm (11.5 x 19.8 x 8.6")
Additional Features	Cool Extrude™ Thermal Management Removeable PSU and LED modules Retention point for suspension cord (optional) Access wiring system T4 rating	Cool Extrude™ Thermal Management Removeable PSU and LED modules Retention point for suspension cord (optional) Access wiring system T4 rating
Emergency Battery Back-up		
Battery		Ni/Cd 12V 4.5Ah
Duration		Up to 90mins at 25% power (1x battery unit) Other options available
Charge Time		20 hours
Additional Features		
Part Codes		
Circular beam pattern	SPX-FL48-W-1010 / SPX-FL48-W-3030 SPX-FL48-W-5050 / SPX-FL48-W-120120	SPX-FL48-W-1010-EM25 / SPX-FL48-W-3030-EM25 SPX-FL48-W-5050-EM25 / SPX-FL48-W-120120-EM25
Elliptical beam pattern	SPX-FL48-W-3510 / SPX-FL48-W-6025 SPX-FL48-W-8030 / SPX-FL48-W-12050	SPX-FL48-W-3510-EM25 / SPX-FL48-W-6025-EM25 SPX-FL48-W-8030-EM25 / SPX-FL48-W-12050-EM25



Certification	ATEX, IEC Ex and UKEX rated for Zone 1 (Gas) and Zone 21 (Dust)		ATEX, IEC Ex and UKEX rated for Zone 1 (Gas) and Zone 21 (Dust)		ATEX, IEC Ex and UKEX rated for Zone 1 (Gas) and Zone 21 (Dust)	
Beam Angles	10° x 10° / 30° x 30° / 50° x 50° and 120° x 120° (circular) 35° x 10° / 60 x25° / 80° x 30° and 120° x 50° (elliptical)		10° x 10° / 30° x 30° / 50° x 50° and 120° x 120° (circular) 35° x 10° / 60 x25° / 80° x 30° and 120° x 50° (elliptical)		10° x 10° / 30° x 30° / 50° x 50° and 120° x 120° (circular) 35° x 10° / 60 x25° / 80° x 30° and 120° x 50° (elliptical)	
Input	110-254V 50/60Hz AC only Low voltage: 18-48V AC and 18-69V DC		110-254V 50/60Hz AC only		110-254V 50/60Hz AC only Low voltage: 18-48V AC and 18-69V DC	
Beam Shape	Elliptical or Circular		Elliptical or Circular		Elliptical or Circular	
Beam Angle System	VARIO interchangeable lens system (elliptical) / Fixed (circular)		VARIO interchangeable lens system (elliptical) / Fixed (circular)		VARIO interchangeable lens system (elliptical) / Fixed (circular)	
Consumption	68W		71W		BL24-HO - 34W BL24 - 20W	
LED type	Platinum Elite SMT LEDs		Platinum Elite SMT LEDs		Platinum Elite SMT LEDs	
Number of LEDS	24		24		24	
Power output (luminous flux)	Up to 8,450 lm – circular beam patterns Up to 8,200 lm – elliptical beam patterns (VARIO)		Up to 8,450 lm – circular beam patterns Up to 8,200 lm – elliptical beam patterns (VARIO)		BL24-HO - 4,250 lm – circular beam patterns 4,000 lm – elliptical beam patterns (VARIO) BL24 - 2,500 lm – circular beam patterns 2,250 lm – elliptical beam patterns (VARIO)	
Wavelength	White-Light <i>(also available in Infra-Red)</i>		White-Light <i>(also available in Infra-Red)</i>		White-Light <i>(also available in Infra-Red)</i>	
IP Rating	IP66 & IP67		IP66 & IP67		IP66 & IP67	
Temperature Range	-52°C to +55°C (-62°F to +131°F)		-20°C to +55°C (-4°F to +131°F)		-50°C to +55°C (-58°F to +131°F)	
Colour Temperature (White-Light)	6,000K+		6,000K+		6,000K+	
Colour	Silver (RAL 9006)		Silver (RAL 9006) Emergency Cover - Red (RAL 3024)		Silver (RAL 9006)	
Weight	8kg (17.6lbs)		10kg (22lbs)		5kg (11.0lbs)	
Dimensions	291 x 312 x 150mm (11.5 x 12.3 x 6")		291 x 312 x 215mm (11.5 x 12.3 x 8.5")		289 x 183 x 232mm (11.4 x 7.2 x9.1")	
Additional Features	Cool Extrude™ Thermal Management Removeable PSU and LED modules Retention point for suspension cord (optional) Access wiring system T4 rating		Cool Extrude™ Thermal Management Removeable PSU and LED modules Retention point for suspension cord (optional) T4 rating		CoolExtrude™ Thermal Management Removable PSU and LED modules Access wiring system T4 rating	
Emergency Battery Back-up						
Battery			Ni/Cd 12V 4.5Ah		NiCd 12V 2.5Ah	
Duration			Up to 90mins at 50% power (1x battery unit) Other options available		Up to 3hrs @ 25% power Other options available	
Charge Time			20 hours		20 hours	
Additional Features					Automatic self-testing	
Part Codes						
Circular beam pattern	SPX-FL24-W-1010 / SPX-FL24-W-3030 SPX-FL24-W-5050 / SPX-FL24-W-120120		SPX-FL24-W-1010-EM50 / SPX-FL24-W-3030-EM50 SPX-FL24-W-5050-EM50 / SPX-FL24-W-120120-EM50		SPX-BL24-W-1010-SB30 / SPX-BL24-W-3030-SB30 SPX-BL24-W-5050-SB30 / SPX-BL24-W-120120-SB30	
Elliptical beam pattern	SPX-FL24-W-3510 / SPX-FL24-W-6025 SPX-FL24-W-8030 / SPX-FL24-W-12050		SPX-FL24-W-3510-EM50 / SPX-FL24-W-6025-EM50 SPX-FL24-W-8030-EM50 / SPX-FL24-W-12050-EM50		SPX-BL24-W-3510-SB30 / SPX-BL24-W-6025-SB30 SPX-BL24-W-8030-SB30 / SPX-BL24-W-12050-SB30	

*SPARTAN Flood BL24 High Output version available,
contact Raytec for details



SPARTAN
HIGH POWER FLOOD HPFL30K



SPARTAN
HIGH POWER FLOOD HPFL25K



SPARTAN
HIGH POWER FLOOD HPFL20K

Certification	ATEX, IEC Ex and UKEX rated for Zone 2 (Gas) and Zone 22 (Dust) CID2 and ABS	ATEX, IEC Ex and UKEX rated for Zone 2 (Gas) and Zone 22 (Dust) CID2 and ABS	ATEX, IEC Ex and UKEX rated for Zone 2 (Gas) and Zone 22 (Dust) CID2 and ABS
Beam Angles	30° x 30° / 60° x 60° / 90° x 90°	30° x 30° / 60° x 60° / 90° x 90°	30° x 30° / 60° x 60° / 90° x 90°
Input	150-264V 50/60Hz AC only CID2 variants - 120-277V AC/DC	150-264V 50/60Hz AC only CID2 variants - 120-277V AC/DC	150-264V 50/60Hz AC only CID2 variants - 120-277V AC/DC
Beam Shape	Circular	Circular	Circular
Beam Angle System	Fixed	Fixed	Fixed
Consumption	300W	250W	200W
LED type	Platinum Elite Multi-Core SMT LEDs	Platinum Elite Multi-Core SMT LEDs	Platinum Elite Multi-Core SMT LEDs
Number of LEDs	24	24	24
Power output (luminous flux)	34,456 lm	28,713 lm	22,971 lm
Wavelength	White-Light	White-Light	White-Light
IP Rating	IP66	IP66	IP66
Temperature Range	-50°C to +50°C (-58°F to +122°F)	-50°C to +50°C (-58°F to +122°F)	-50°C to +50°C (-58°F to +122°F)
Colour Temperature (White-Light)	5,700K	5,700K	5,700K
Colour	Silver (RAL 9006)	Silver (RAL 9006)	Silver (RAL 9006)
Weight	23.5kg (51.8lbs)	23.5kg (51.8lbs)	23.5kg (51.8lbs)
Dimensions	639 x 350 x 215mm (25.2 x 13.8 x 8.5")	639 x 350 x 215mm (25.2 x 13.8 x 8.5")	639 x 350 x 215mm (25.2 x 13.8 x 8.5")
Additional Features	CoolExtrude™ Thermal Management Removable PSU and LED modules DALI/Dimming as Standard Access wiring system T4 Rating	CoolExtrude™ Thermal Management Removable PSU and LED modules DALI/Dimming as Standard Access wiring system T4 Rating	CoolExtrude™ Thermal Management Removable PSU and LED modules DALI/Dimming as Standard Access wiring system T4 Rating

Emergency Battery Back-up

Battery			
Duration			
Charge Time			
Additional Features			

Part Codes

Circular beam pattern	SPZ-HPFL30K-W-3030 / SPZ-HPFL30K-W-6060 / SPZ-HPFL30K-W-9090	SPZ-HPFL25K-W-3030 / SPZ-HPFL25K-W-6060 / SPZ-HPFL25K-W-9090	SPZ-HPFL20K-W-3030 / SPZ-HPFL20K-W-6060 / SPZ-HPFL20K-W-9090
Elliptical beam pattern			



SPARTAN
MID POWER FLOOD MPFL15K



SPARTAN
MID POWER FLOOD
MPFL15K Emergency



SPARTAN
MID POWER FLOOD MPFL12.5K



SPARTAN
MID POWER FLOOD
MPFL12.5K Emergency



SPARTAN
MID POWER FLOOD MPFL10K

Certification	ATEX, IEC Ex and UKEX rated for Zone 2 (Gas) and Zone 22 (Dust) CID2 and ABS	ATEX, IEC Ex and UKEX rated for Zone 2 (Gas) and Zone 22 (Dust) CID2	ATEX, IEC Ex and UKEX rated for Zone 2 (Gas) and Zone 22 (Dust) CID2 and ABS	ATEX, IEC Ex and UKEX rated for Zone 2 (Gas) and Zone 22 (Dust) CID2	ATEX, IEC Ex and UKEX rated for Zone 2 (Gas) and Zone 22 (Dust) CID2 and ABS
Beam Angles	"30° x 30° or 60° x 60° or 90° x 90° or 120° x 15° or 10° x 10°"	"30° x 30° or 60° x 60° or 90° x 90° or 120° x 15° or 10° x 10°"	"30° x 30° or 60° x 60° or 90° x 90° or 120° x 15° or 10° x 10°"	"30° x 30° or 60° x 60° or 90° x 90° or 120° x 15° or 10° x 10°"	"30° x 30° or 60° x 60° or 90° x 90° or 120° x 15° or 10° x 10°"
Input	110-277V 50/60Hz AC only	110-277V 50/60Hz AC only	110-277V 50/60Hz AC only	110-277V 50/60Hz AC only	110-277V 50/60Hz AC only
Beam Shape	Circular	Circular	Circular	Circular	Circular
Beam Angle System	Fixed	Fixed	Fixed	Fixed	Fixed
Consumption	120W	125W	100W	105W	80W
LED type	Platinum Elite SMT LEDs	Platinum Elite SMT LEDs	Platinum Elite SMT LEDs	Platinum Elite SMT LEDs	Platinum Elite SMT LEDs
Number of LEDS	48	48	48	48	48
Power output (luminous flux)	16,470lm	16,470lm	13,712lm	13,712lm	10,973lm
Wavelength	White-Light	White-Light	White-Light	White-Light	White-Light
IP Rating	IP66 & IP67	IP66 & IP67	IP66 & IP67	IP66 & IP67	IP66 & IP67
Temperature Range	-40°C to +60°C (-40°F to +140°F)	-20°C to +50°C (-4°F to +122°F)	-40°C to +60°C (-40°F to +140°F)	-20°C to +50°C (-4°F to +122°F)	-40°C to +60°C (-40°F to +140°F)
Colour Temperature (White-Light)	5,700K	5,700K	5,700K	5,700K	5,700K
Colour	Silver (RAL 9006)	Silver (RAL 9006)	Silver (RAL 9006)	Silver (RAL 9006)	Silver (RAL 9006)
Weight	13.2kg (29.1lbs)	16kg (35.2lbs)	13.2kg (29.1lbs)	16kg (35.2lbs)	13.2kg (29.1lbs)
Dimensions	609 x 350 x 109 (24 x 13.9 x 4.3")	609 x 350 x 119 (24 x 13.9 x 4.7")	609 x 350 x 109 (24 x 13.9 x 4.3")	609 x 350 x 119 (24 x 13.9 x 4.7")	609 x 350 x 109 (24 x 13.9 x 4.3")
Additional Features	Removable PSU Front access wiring system T4 Rating	Removable PSU Front access wiring system T4 Rating	Removable PSU Front access wiring system T4 Rating	Removable PSU Front access wiring system T4 Rating	Removable PSU Front access wiring system T4 Rating

Emergency Battery Back-up

Battery	NIMH 12V 6.0Ah		NIMH 12V 6.0Ah	
Duration	180 or 90 mins depending on variant Other options available		180 or 90 mins depending on variant Other options available	
Charge Time	20 Hours		20 Hours	
Additional Features				

Part Codes

Circular beam pattern	SPZ-MPFL15K-W-3030 / SPZ-MPFL15K-W-6060 / SPZ-MPFL15K-W-9090 / SPZ-MPFL15K-W-1010	SPZ-MPFL15K-W-3030-EMX / SPZ-MPFL15K-W-6060-EMX / SPZ-MPFL15K-W-9090-EMX / SPZ-MPFL15K-W-1010-EMX	SPZ-MPFL12K5-W-3030 / SPZ-MPFL12K5-W-6060 / SPZ-MPFL12K5-W-9090 / SPZ-MPFL12K5-W-1010	SPZ-MPFL12K5-W-3030-EMX / SPZ-MPFL12K5-W-6060-EMX / SPZ-MPFL12K5-W-9090-EMX / SPZ-MPFL12K5-W-1010-EMX	SPZ-MPFL10K-W-3030 / SPZ-MPFL10K-W-6060 / SPZ-MPFL10K-W-9090 / SPZ-MPFL10K-W-1010
Elliptical beam pattern	SPZ-MPFL15K-W-12015	SPZ-MPFL15K-W-12015-EMX	SPZ-MPFL12K5-W-12015	SPZ-MPFL12K5-W-12015-EMX	SPZ-MPFL10K-W-12015



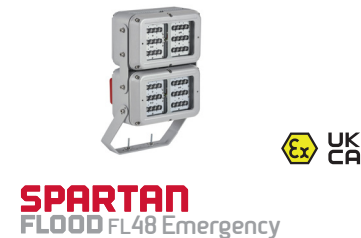
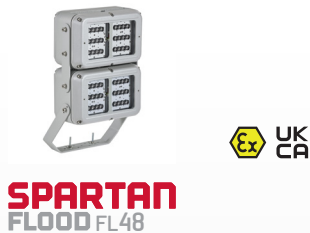
Certification	ATEX, IEC Ex and UKEX rated for Zone 2 (Gas) and Zone 22 (Dust) CID2	ATEX, IEC Ex and UKEX rated for Zone 2 (Gas) and Zone 22 (Dust) CID2 and ABS	ATEX, IEC Ex and UKEX rated for Zone 2 (Gas) and Zone 22 (Dust) CID2	ATEX, IEC Ex and UKEX rated for Zone 2 (Gas) and Zone 22 (Dust) CID2 and ABS	ATEX, IEC Ex and UKEX rated for Zone 2 (Gas) and Zone 22 (Dust) CID2
Beam Angles	30° x 30° or 60° x 60° or 90° x 90° or 120° x 15° or 10° x 10°	30° x 30° or 60° x 60° or 90° x 90° or 120° x 15° or 10° x 10°	30° x 30° or 60° x 60° or 90° x 90° or 120° x 15° or 10° x 10°	30° x 30° or 60° x 60° or 90° x 90° or 120° x 15° or 10° x 10°	30° x 30° or 60° x 60° or 90° x 90° or 120° x 15° or 10° x 10°
Input	110-277V 50/60Hz AC only	110-277V 50/60Hz AC only	110-277V 50/60Hz AC only	110-277V 50/60Hz AC only	110-277V 50/60Hz AC only
Beam Shape	Circular	Circular	Circular	Circular	Circular
Beam Angle System	Fixed	Fixed	Fixed	Fixed	Fixed
Consumption	85W	60W	65W	40W	45W
LED type	Platinum Elite SMT LEDs	Platinum Elite SMT LEDs	Platinum Elite SMT LEDs	Platinum Elite SMT LEDs	Platinum Elite SMT LEDs
Number of LEDS	48	24	24	24	24
Power output (luminous flux)	10,973lm	8,235lm	8,235lm	5,486lm	5,486lm
Wavelength	White-Light	White-Light	White-Light	White-Light	White-Light
IP Rating	IP66 & IP67	IP66 & IP67	IP66 & IP67	IP66 & IP67	IP66 & IP67
Temperature Range	-20°C to +50°C (-4°F to +122°F)	-40°C to +60°C (-40°F to +140°F)	-20°C to +50°C (-4°F to +122°F)	-40°C to +60°C (-40°F to +140°F)	-20°C to +50°C (-4°F to +122°F)
Colour Temperature (White-Light)	5,700K	5,700K	5,700K	5,700K	5,700K
Colour	Silver (RAL 9006)	Silver (RAL 9006)	Silver (RAL 9006)	Silver (RAL 9006)	Silver (RAL 9006)
Weight	16kg (35.2lbs)	13.2kg (29.1lbs)	16kg (35.2lbs)	13.2kg (29.1lbs)	16kg (35.2lbs)
Dimensions	609 x 350 x 119 (24 x 13.9 x 4.7")	609 x 350 x 109 (24 x 13.9 x 4.3")	609 x 350 x 119 (24 x 13.9 x 4.7")	609 x 350 x 109 (24 x 13.9 x 4.3")	609 x 350 x 119 (24 x 13.9 x 4.7")
Additional Features	Removable PSU Front access wiring system T4 Rating	Removable PSU Front access wiring system T4 Rating	Removable PSU Front access wiring system T4 Rating	Removable PSU Front access wiring system T4 Rating	Removable PSU Front access wiring system T4 Rating

Emergency Battery Back-up

Battery	NiMH 12V 6.0Ah		NiMH 12V 6.0Ah		NiMH 12V 6.0Ah
Duration	180 or 90 mins depending on variant Other options available		180 or 90 mins depending on variant Other options available		180 or 90 mins depending on variant Other options available
Charge Time	20 Hours		20 Hours		20 Hours
Additional Features					

Part Codes

Circular beam pattern	SPZ-MPFL10K-W-3030-EMX / SPZ-MPFL10K-W-6060-EMX / SPZ-MPFL10K-W-9090-EMX / SPZ-MPFL10K-W-1010-EMX	SPZ-MPFL7K5-W-3030 / SPZ-MPFL7K5-W-6060 / SPZ-MPFL7K5-W-9090 / SPZ-MPFL7K5-W-1010	SPZ-MPFL7K5-W-3030-EMX / SPZ-MPFL7K5-W-6060-EMX / SPZ-MPFL7K5-W-9090-EMX / SPZ-MPFL7K5-W-1010-EMX	SPZ-MPFL5K-W-3030 / SPZ-MPFL5K-W-6060 / SPZ-MPFL5K-W-9090 / SPZ-MPFL5K-W-1010	SPZ-MPFL5K-W-3030-EMX / SPZ-MPFL5K-W-6060-EMX / SPZ-MPFL5K-W-9090-EMX / SPZ-MPFL5K-W-1010-EMX
Elliptical beam pattern	SPZ-MPFL10K-W-12015-EMX	SPZ-MPFL7K5-W-12015	SPZ-MPFL7K5-W-12015-EMX	SPZ-MPFL5K-W-12015	SPZ-MPFL5K-W-12015-EMX



Certification	ATEX, IEC Ex and UKEX rated for Zone 2 (Gas) and Zone 22 (Dust) CID2 and ABS	ATEX, IEC Ex and UKEX rated for Zone 2 (Gas) and Zone 22 (Dust) ABS Approved
Beam Angles	10° x 10° / 30° x 30° / 50° x 50° and 120° x 120° (circular) 35° x 10° / 60 x25° / 80° x 30° and 120° x 50° (elliptical)	10° x 10° / 30° x 30° / 50° x 50° and 120° x 120° (circular) 35° x 10° / 60 x25° / 80° x 30° and 120° x 50° (elliptical)
Input	110-254V 50/60Hz AC only Low voltage: 18-48V AC and 18-69V DC	110-254V 50/60Hz AC only
Beam Shape	Elliptical or Circular	Elliptical or Circular
Beam Angle System	VARIO interchangeable lens system (elliptical) / Fixed (circular)	VARIO interchangeable lens system (elliptical) / Fixed (circular)
Consumption	136W	139W
LED type	Platinum Elite SMT LEDs	Platinum Elite SMT LEDs
Number of LEDs	48	48
Power output (luminous flux)	Up to 18,600 lm – circular beam patterns Up to 17,600 lm – elliptical beam patterns (VARIO)*	Up to 18,600 lm – circular beam patterns Up to 17,600 lm – elliptical beam patterns (VARIO)*
Wavelength	White-Light (also available in Infra-Red)	White-Light (also available in Infra-Red)
IP Rating	IP66 & IP67	IP66 & IP67
Temperature Range	-50°C to +55°C (-58°F to +131°F)	-20°C to +55°C (-4°F to +131°F)
Colour Temperature (White-Light)	6,000K+	6,000K+
Colour	Silver (RAL 9006)	Silver (RAL 9006) Emergency Cover - Red (RAL 3024)
Weight	16kg (35.2lbs)	20kg (44lbs)
Dimensions	291 x 502 x 158mm (11.5 x 19.8x 6.2")	291 x 502 x 219mm (11.5 x 19.8 x 8.6")
Additional Features	Cool Extrude™ Thermal Management Removeable PSU and LED modules Retention point for suspension cord (optional) Access wiring system T4 rating	Cool Extrude Thermal Management Removeable PSU and LED modules Retention point for suspension cord (optional) Access wiring system T4 rating
Emergency Battery Back-up		
Battery		Ni/Cd 12V 4.5Ah
Duration		Up to 90mins at 25% power (1x battery unit) Other options available
Charge Time		20 hours
Additional Features		
Part Codes		
Circular beam pattern	SPZ-FL48-W-1010 / SPZ-FL48-W-3030 SPZ-FL48-W-5050 / SPZ-FL48-W-120120	SPZ-FL48-W-1010-EM25 / SPZ-FL48-W-3030-EM25 SPZ-FL48-W-5050-EM25 / SPZ-FL48-W-120120-EM25
Elliptical beam pattern	SPZ-FL48-W-3510 / SPZ-FL48-W-6025 SPZ-FL48-W-8030 / SPZ-FL48-W-12050	SPZ-FL48-W-3510-EM25 / SPZ-FL48-W-6025-EM25 SPZ-FL48-W-8030-EM25 / SPZ-FL48-W-12050-EM25

*Lumen output figures relate to the Zone 2/22 variant. Contact Raytec for CID2 variant specifications.



Certification	ATEX, IEC Ex and UKEX rated for Zone 2 (Gas) and Zone 22 (Dust) CID2 and ABS	ATEX, IEC Ex and UKEX rated for Zone 2 (Gas) and Zone 22 (Dust) ABS Approved	ATEX, IEC Ex and UKEX rated for Zone 2 (Gas) and Zone 22 (Dust) CID2 and ABS	ATEX, IEC Ex and UKEX rated for Zone 2 (Gas) and Zone 22 (Dust) CID2 and ABS
Beam Angles	10° x 10° / 30° x 30° / 50° x 50° and 120° x 120° (circular) 35° x 10° / 60 x25° / 80° x 30° and 120° x 50° (elliptical)	10° x 10° / 30° x 30° / 50° x 50° and 120° x 120° (circular) 35° x 10° / 60 x25° / 80° x 30° and 120° x 50° (elliptical)	10° x 10° / 30° x 30° / 50° x 50° and 120° x 120° (circular) 35° x 10° / 60 x25° / 80° x 30° and 120° x 50° (elliptical)	10° x 10° / 30° x 30° / 50° x 50° and 120° x 120° (circular) 35° x 10° / 60 x25° / 80° x 30° and 120° x 50° (elliptical)
Input	110-254V 50/60Hz AC only Low voltage: 18-48V AC and 18-69V DC	110-254V 50/60Hz AC only	110-254V 50/60Hz AC only Low voltage: 18-48V AC and 18-69V DC	110-254V 50/60Hz AC only
Beam Shape	Elliptical or Circular	Elliptical or Circular	Elliptical or Circular	Elliptical or Circular
Beam Angle System	VARIO interchangeable lens system (elliptical) / Fixed (circular)	VARIO interchangeable lens system (elliptical) / Fixed (circular)	VARIO interchangeable lens system (elliptical) / Fixed (circular)	VARIO interchangeable lens system (elliptical) / Fixed (circular)
Consumption	68W	71W	BL24-HO - 34W BL24 - 20W	BL24-HO - 37W BL24 - 24W
LED type	Platinum Elite SMT LEDs	Platinum Elite SMT LEDs	Platinum Elite SMT LEDs	Platinum Elite SMT LEDs
Number of LEDs	24	24	24	24
Power output (luminous flux)	Up to 9,300 lm – circular beam patterns Up to 9,050 lm – elliptical beam patterns (VARIO)*	Up to 9,300 lm – circular beam patterns Up to 9,050 lm – elliptical beam patterns (VARIO)*	BL24-HO - 4,650 lm – circular beam patterns 4,100 lm – elliptical beam patterns (VARIO) BL24 - 2,750 lm – circular beam patterns 2,500 lm – elliptical beam patterns (VARIO)*	BL24-HO-EMX25 - 4,650 lm – circular beam patterns 4,100 lm – elliptical beam patterns (VARIO) BL24-EMX25 - 2,750 lm – circular beam patterns 2,500 lm – elliptical beam patterns (VARIO)*
Wavelength	White-Light (also available in Infra-Red)	White-Light (also available in Infra-Red)	White-Light (also available in Infra-Red)	White-Light (also available in Infra-Red)
IP Rating	IP66 & IP67	IP66 & IP67	IP66 & IP67	IP66 & IP67
Temperature Range	-50°C to +55°C (-58°F to +131°F)	-20°C to +55°C (-4°F to +131°F)	-50°C to +55°C (-58°F to +131°F)	-20°C to +46°C (-4°F to +114°F)
Colour Temperature (White-Light)	6,000K+	6,000K+	6,000K +	6,000K +
Colour	Silver (RAL 9006)	Silver (RAL 9006)	Silver (RAL 9006)	Silver (RAL 9006)
Weight	8kg (17.6lbs)	10kg (22lbs)	5kg (11.0lbs)	6kg (13.2lbs)
Dimensions	291 x 312 x 150mm (11.5 x 12.3 x 6")	291 x 312 x 215mm (11.5 x 12.3 x 8.5")	289 x 183 x 232mm (11.4 x 7.2 x 9.1")	289 x 183 x 232mm (11.4 x 7.2 x 9.1")
Additional Features	Cool Extrude™ Thermal Management Removeable PSU and LED modules Retention point for suspension cord (optional) Access wiring system T4 rating	Cool Extrude™ Thermal Management Removeable PSU and LED modules Retention point for suspension cord (optional) Access wiring system T4 rating	CoolExtrude™ Thermal Management Removable PSU and LED modules Access wiring system T4 rating	CoolExtrude™ Thermal Management Removable PSU and LED modules Access wiring system T4 rating
Emergency Battery Back-up				
Battery		Ni/Cd 12V 4.5Ah		NiCd 12V 2.5Ah
Duration		Up to 90mins at 50% power (1x battery unit) Other options available		Up to 3hrs @ 25% power Other options available
Charge Time		20 hours		20 hours
Additional Features				Automatic self-testing
Part Codes				
Circular beam pattern	SPZ-FL24-W-1010 / SPZ-FL24-W-3030 SPZ-FL24-W-5050 / SPZ-FL24-W-120120	SPZ-FL24-W-1010-EM50 / SPZ-FL24-W-3030-EM50 SPZ-FL24-W-5050-EM50 / SPZ-FL24-W-120120-EM50	SPZ-BL24-W-1010-SB30 / SPZ-BL24-W-3030-SB30 SPZ-BL24-W-5050-SB30 / SPZ-BL24-W-120120-SB30	SPZ-BL24-W-1010-EMX25-SB30 / SPZ-BL24-W-3030-EMX25-SB30 SPZ-BL24-W-5050-EMX25-SB30 / SPZ-BL24-W-120120-EMX25-SB30
Elliptical beam pattern	SPZ-FL24-W-3510 / SPZ-FL24-W-6025 SPZ-FL24-W-8030 / SPZ-FL24-W-12050	SPZ-FL24-W-3510-EM50 / SPZ-FL24-W-6025-EM50 SPZ-FL24-W-8030-EM50 / SPZ-FL24-W-12050-EM50	SPZ-BL24-W-3510-SB30 / SPZ-BL24-W-6025-SB30 SPZ-BL24-W-8030-SB30 / SPZ-BL24-W-12050-SB30	SPZ-BL24-W-3510-EMX25-SB30 / SPZ-BL24-W-6025-EMX25-SB30 SPZ-BL24-W-8030-EMX25-SB30 / SPZ-BL24-W-12050-EMX25-SB30

*Lumen output figures relate to the Zone 2/22 variant. Contact Raytec for CID2 variant specifications.

*SPARTAN Flood BL24 High Output version available, contact Raytec for details

SPARTAN

LINEAR



Robust

Housed in marine grade aluminium with stainless steel fasteners and brackets, SPARTAN Linear is IP66 and IP67 rated and can survive in the most extreme environments.

NEW! Upgraded polycarbonate lens for even greater durability and impact resistance.

Intelligent Emergency Back-Up

SPARTAN Linear is available as an emergency variant which can run up to 100% light output under emergency conditions. All SPARTAN Linear emergency units come with intelligent battery management to proactively monitor and maintain the overall health of your luminaire.



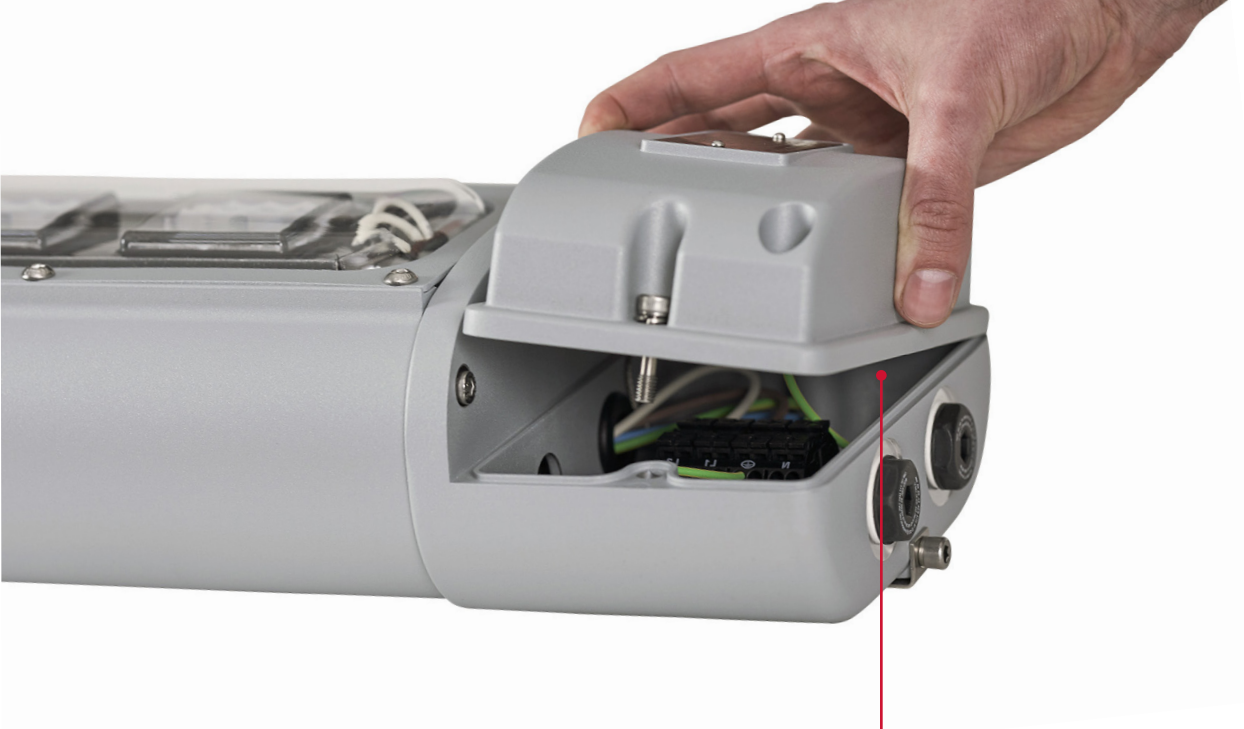
Perfect, Crisp, Even Illumination

Multiple small profile, medium power SMT LEDs are used to deliver a crisp, uniform illumination without glare.

NEW! Now available with a choice of beam patterns to suit a wide range of applications and offering up to 12,260 lm with the latest High Output variants.

Wide Operating Temperature

An operating temperature range of -40°C to +60°C* with a T4/T5/T6 rating means SPARTAN Linear is suitable for even the most challenging conditions.



Easy Maintenance

A maintenance friendly modular design allows quick and easy servicing and inspection of all key components including LED and PSU modules. SPARTAN Linear has also been designed without ledges to prevent dust or water from accumulating.



Automatic Self-Testing

The intelligent emergency system ensures 100% light output is maintained during all testing procedures, while discharge cycles occur randomly every 3 months and always retain around a third of the battery's charge, so you're never left with a total loss of light. The health status of the luminaire is communicated through the LED indicator.

Retrofitable

SPARTAN Linear is a direct replacement for fluorescent fittings, meaning you can upgrade to LED light without complication.





Certification	ATEX, IEC Ex and UKEX rated for Zone 1 (Gas) and Zone 21 (Dust) ABS Approved	ATEX, IEC Ex and UKEX rated for Zone 1 (Gas) and Zone 21 (Dust) ABS Approved	ATEX, IEC Ex and UKEX rated for Zone 1 (Gas) and Zone 21 (Dust) ABS Approved
Beam Angles	120° as standard Other beam angles available	120° as standard Other beam angles available	120° as standard Other beam angles available
Input	Standard: 110-254V AC Low voltage version: 18-48V AC and 18-69V DC Extra low voltage version: 12V AC/DC	110-254V AC only	Standard: 110-254V AC Low voltage version: 18-48V AC and 18-69V DC Extra low voltage version: 12V AC/DC
Consumption	48W	56W	48W
LED type	Platinum Elite SMT LEDs	Platinum Elite SMT LEDs	Platinum Elite SMT LEDs
Number of LEDS	160	160	160
Power output (luminous flux)	Up to 6,130 lm	Up to 6,130 lm	Up to 6,130 lm
Wavelength	White-Light	White-Light	White-Light
IP Rating	IP66 & IP67	IP66 & IP67	IP66 & IP67
Temperature Range	-40°C to +60°C (-40°F to +140°F)	-20°C to +50°C (-4°F to +122°F)	-40°C to +60°C (-40°F to +140°F)
Colour Temperature (White-Light)	6,500K standard	6,500K standard	6,500K standard
Colour	Silver (RAL 9006)	Silver (RAL 9006) Emergency Cover - Red (RAL 3024)	Silver (RAL 9006)
Weight	9kg (19.8lbs)	10kg (22lbs)	9kg (19.8lbs)
Dimensions	1295 x 108 x 174mm (51 x 4.3 x 6.9") Equivalent to a 2x36W T8 Fluorescent	1414 x 108 x 174mm (55.7 x4.3 x 6.9") Equivalent to a 2x36W T8 Fluorescent	1635 x 108 x 174mm (64.4 x 4.3 x 6.9") Equivalent to a 2x58W T8 Fluorescent
Additional Features	CoolExtrude™ Thermal Management Removable PSU and LED Modules Access wiring system T5 and T6 variants (T4 as standard)	CoolExtrude™ Thermal Management Removable PSU and LED Modules Access wiring system T5 and T6 variants (T4 as standard)	CoolExtrude™ Thermal Management Removable PSU and LED Modules Access wiring system T5 and T6 variants (T4 as standard)
Intelligent Emergency Battery Back-up			
Battery		Ni/Cd 12V	
Duration		Up to 3hrs @ 25% power Other options available	
Charge Time		20 hours	
Additional Features		Automatic self-testing	
Part Codes			
	SPX-WL168	SPX-WL168-EMX25	SPX-WL168-1500



Certification	ATEX, IEC Ex and UKEX rated for Zone 1 (Gas) and Zone 21 (Dust) ABS Approved	ATEX, IEC Ex and UKEX rated for Zone 1 (Gas) and Zone 21 (Dust) ABS Approved	ATEX, IEC Ex and UKEX rated for Zone 1 (Gas) and Zone 21 (Dust) ABS Approved	ATEX, IEC Ex and UKEX rated for Zone 1 (Gas) and Zone 21 (Dust) ABS Approved
Beam Angles	120° as standard Other beam angles available	120° as standard Other beam angles available	120° as standard Other beam angles available	120° as standard Other beam angles available
Input	Standard: 110-254V AC Low voltage version: 18-48V AC and 18-69V DC Extra low voltage version: 12V AC/DC	110-254V 50/60Hz AC only	Standard: 110-254V AC Low voltage version: 18-48V AC and 18-69V DC Extra low voltage version: 12V AC/DC	110-254V 50/60Hz AC only
Consumption	24W	32W	24W	32W
LED type	Platinum Elite SMT LEDs	Platinum Elite SMT LEDs	Platinum Elite SMT LEDs	Platinum Elite SMT LEDs
Number of LEDS	80	80	80	80
Power output (luminous flux)	Up to 3,065 lm	Up to 3,065 lm	Up to 3,065 lm	Up to 3,065 lm
Wavelength	White-Light	White-Light	White-Light	White-Light
IP Rating	IP66 & IP67	IP66 & IP67	IP66 & IP67	IP66 & IP67
Temperature Range	-40°C to +60°C (-40°F to +140°F)	-20°C to +50°C (-4°F to +122°F)	-40°C to +60°C (-40°F to +140°F)	-20°C to +50°C (-4°F to +122°F)
Colour Temperature (White-Light)	6500K standard	6500K standard	6500K standard	6500K standard
Colour	Silver (RAL 9006)	Silver (RAL 9006) Emergency Cover - Red (RAL 3024)	Silver (RAL 9006)	Silver (RAL 9006) Emergency Cover - Red (RAL 3024)
Weight	6kg (13.2lbs)	7kg (15.4lbs)	9kg (19.8lbs)	10kg (22.1lbs)
Dimensions	775 x 108 x 174mm (30.5 x 4.3 x 6.9") Equivalent to 2 x 18W T8 Fluorescent	775 x 108 x 174mm (30.5 x 4.3 x 6.9") Equivalent to 2 x 18W T8 Fluorescent	1295 x 108 x 174mm (51 x 4.3 x 6.9") Equivalent to 2 x 36W T8 Fluorescent	1295 x 108 x 174mm (51 x 4.3 x 6.9") Equivalent to 2 x 36W T8 Fluorescent
Additional Features	CoolExtrude™ Thermal Management Removable PSU and LED Modules Access wiring system T5 and T6 variants (T4 as standard)	CoolExtrude™ Thermal Management Removable PSU and LED Modules Access wiring system T5 and T6 variants (T4 as standard)	CoolExtrude™ Thermal Management Removable PSU and LED Modules Access wiring system T5 and T6 variants (T4 as standard)	CoolExtrude™ Thermal Management Removable PSU and LED Modules Access wiring system T5 and T6 variants (T4 as standard)

Intelligent Emergency Battery Back-up

Battery		Ni/Cd 12V		Ni/Cd 12V
Duration		Up to 3hrs @ 25% power Other options available		Up to 3hrs @ 25% power Other options available
Charge Time		20 hours		20 hours
Additional Features		Automatic self-testing		Automatic self-testing

Part Codes

	SPX-WL84	SPX-WL84-EMX25	SPX-WL84-1200	SPX-WL84-1200-EMX25
--	----------	----------------	---------------	---------------------



SPARTAN
LINEAR WL84 High Output



SPARTAN
LINEAR WL84 High Output Emergency



SPARTAN
LINEAR WL168 High Output

Certification	ATEX, IEC Ex and UKEX rated for Zone 1 (Gas) and Zone 21 (Dust) ABS Approved		ATEX, IEC Ex and UKEX rated for Zone 1 (Gas) and Zone 21 (Dust) ABS Approved		ATEX, IEC Ex and UKEX rated for Zone 1 (Gas) and Zone 21 (Dust) ABS Approved	
Beam Angles	120° as standard Other beam angles available		120° as standard Other beam angles available		120° as standard Other beam angles available	
Input	110-254V AC 50/60Hz 110-254V DC		110-254V 50/60Hz AC only		110-254V AC 50/60Hz 110-254V DC	
Consumption	48W		56W		96W	
LED type	Platinum Elite SMT LEDs		Platinum Elite SMT LEDs		Platinum Elite SMT LEDs	
Number of LEDS	80		80		160	
Power output (luminous flux)	Up to 6,130 lm		Up to 6,130 lm		Up to 12,260 lm	
Wavelength	White-Light		White-Light		White-Light	
IP Rating	IP66 & IP67		IP66 & IP67		IP66 & IP67	
Temperature Range	-40°C to +60°C (-40°F to +140°F)		-20°C to +50°C (-4°F to +122°F)		-40°C to +60°C (-40°F to +140°F)	
Colour Temperature (White-Light)	6500K standard		6500K standard		6,500K standard	
Colour	Silver (RAL 9006)		Silver (RAL 9006) Emergency Cover - Red (RAL 3024)		Silver (RAL 9006)	
Weight	6kg (13.2lbs)		7kg (15.4lbs)		10kg (22lbs)	
Dimensions	775 x 108 x 174mm (30.5 x 4.3 x 6.9") Equivalent to 2 x 18W T8 Fluorescent		880 x 108 x 174mm (34.6 x 4.3 x 6.9") Equivalent to 2 x 18W T8 Fluorescent		1295 x 108 x 174mm (51 x 4.3 x 6.9") Equivalent to a 2x36W T8 Fluorescent	
Additional Features	CoolExtrude™ Thermal Management Removable PSU and LED Modules Access wiring system		CoolExtrude™ Thermal Management Removable PSU and LED Modules Access wiring system		CoolExtrude™ Thermal Management Removable PSU and LED Modules Access wiring system	
Intelligent Emergency Battery Back-up						
Battery			Ni/Cd 12V			
Duration			Up to 3hrs @ 25% power Other options available			
Charge Time			20 hours			
Additional Features			Automatic self-testing			
Part Codes						
	SPX-WL84-HO		SPX-WL84-HO-EMX25		SPX-WL168-HO	



Certification	ATEX, IEC Ex and UKEX rated for Zone 2 (Gas) and Zone 22 (Dust) CID2 and ABS	ATEX, IEC Ex and UKEX rated for Zone 2 (Gas) and Zone 22 (Dust) CID2 and ABS	ATEX, IEC Ex and UKEX rated for Zone 2 (Gas) and Zone 22 (Dust) CID2 and ABS Approved
Beam Angles	120° Other beam angles available	120° Other beam angles available	120° Other beam angles available
Input	Standard: 110-254V AC Low voltage version: 18-48V AC and 18-69V DC Extra low voltage version: 12V AC/DC	110-254V AC only	Standard: 110-254V AC Low voltage version: 18-48V AC and 18-69V DC Extra low voltage version: 12V AC/DC
Consumption	49W	56W	49W
LED type	Platinum Elite SMT LEDs	Platinum Elite SMT LEDs	Platinum Elite SMT LEDs
Number of LEDS	160	160	160
Power output (luminous flux)	Up to 7,048 lm	Up to 7,048 lm	Up to 7,048 lm
Wavelength	White-Light	White-Light	White-Light
IP Rating	IP66 & IP67	IP66 & IP67	IP66 & IP67
Temperature Range	-40°C to +60°C (-40°F to +140°F)	-20°C to +50°C (-4°F to +122°F)	-40°C to +60°C (-40°F to +140°F)
Colour Temperature (White-Light)	6500K standard	6500K standard	6500K standard
Colour	Silver (RAL 9006)	Silver (RAL 9006) Emergency Cover - Red (RAL 3024)	Silver (RAL 9006)
Weight	9kg (19.8lbs)	10kg (22lbs)	9kg (19.8lbs)
Dimensions	1295 x 108 x 174mm (51 x 4.3 x 6.9") Equivalent to 2 x 36W T8 Fluorescent	1414 x 108 x 174mm (55.7 x4.3 x 6.9") Equivalent to 2 x 36W T8 Fluorescent	1635 x 108 x 174mm (64.4 x 4.3 x 6.9") Equivalent to 2 x 58W T8 Fluorescent
Additional Features	CoolExtrude™ Thermal Management Removable PSU and LED Modules Access wiring system T5 and T6 variants (T4 as standard)	CoolExtrude™ Thermal Management Removable PSU and LED Modules Access wiring system T5 and T6 variants (T4 as standard)	CoolExtrude™ Thermal Management Removable PSU and LED Modules Access wiring system T5 and T6 variants (T4 as standard)
Intelligent Emergency Battery Back-up			
Battery		Ni/Cd 12V	
Duration		Up to 3hrs @ 25% power Other options available	
Charge Time		20 hours	
Additional Features		Automatic self-testing	
Part Codes			
	SPZ-WL168	SPZ-WL168-EMX25	SPZ-WL168-1500



SPARTAN
LINEAR WL84



SPARTAN
LINEAR WL84 Emergency



SPARTAN
LINEAR WL84-1200



SPARTAN
LINEAR WL84-1200 Emergency

Certification	ATEX, IEC Ex and UKEX rated for Zone 2 and Zone 22 CID2 and ABS		ATEX, IEC Ex and UKEX rated for Zone 2 and Zone 22 CID2 and ABS Approved		ATEX, IEC Ex and UKEX rated for Zone 2 and Zone 22 CID2 and ABS		ATEX, IEC Ex and UKEX rated for Zone 2 and Zone 22 CID2 and ABS Approved	
Beam Angles	120° as standard Other beam angles available		120° as standard Other beam angles available		120° as standard Other beam angles available		120° as standard Other beam angles available	
Input	Standard: 110-254V AC Low voltage version: 18-48V AC and 18-69V DC Extra low voltage version: 12V AC/DC		110-254V AC only		Standard: 110-254V AC Low voltage version: 18-48V AC and 18-69V DC Extra low voltage version: 12V AC/DC		110-254V AC only	
Consumption	24W		32W		24W		32W	
LED type	Platinum Elite SMT LEDs		Platinum Elite SMT LEDs		Platinum Elite SMT LEDs		Platinum Elite SMT LEDs	
Number of LEDS	80		80		80		80	
Power output (luminous flux)	Up to 3,524 lm		Up to 3,524 lm		Up to 3,524 lm		Up to 3,524 lm	
Wavelength	White-Light		White-Light		White-Light		White-Light	
IP Rating	IP66 & IP67		IP66 & IP67		IP66 & IP67		IP66 & IP67	
Temperature Range	-40°C to +60°C (-40°F to +140°F)		-20°C to +50°C (-4°F to +122°F)		-40°C to +60°C (-40°F to +140°F)		-20°C to +50°C (-4°F to +122°F)	
Colour Temperature (White-Light)	6500K standard		6500K standard		6500K standard		6500K standard	
Colour	Silver (RAL 9006)		Silver (RAL 9006) Emergency Cover - Red (RAL 3024)		Silver (RAL 9006)		Silver (RAL 9006) Emergency Cover - Red (RAL 3024)	
Weight	6kg (13.2lbs)		7kg (15.4lbs)		9kg (19.8lbs)		10kg (22.lbs)	
Dimensions	775 x 108 x 174mm (30.5 x 4.3 x 6.9") Equivalent to 2 x 18W T8 Fluorescent		775 x 108 x 174mm (30.5 x 4.3 x 6.9") Equivalent to 2 x 18W T8 Fluorescent		1295 x 108 x 174mm (51 x 4.3 x 6.9") Equivalent to 2 x 36W T8 Fluorescent		1295 x 108 x 174mm (51 x 4.3 x 6.9") Equivalent to 2 x 36W T8 Fluorescent	
Additional Features	CoolExtrude™ Thermal Management Removable PSU and LED Modules Access wiring system T5 and T6 variants (T4 as standard)		CoolExtrude™ Thermal Management Removable PSU and LED Modules Access wiring system T5 and T6 variants (T4 as standard)		CoolExtrude™ Thermal Management Removable PSU and LED Modules Access wiring system T5 and T6 variants (T4 as standard)		CoolExtrude™ Thermal Management Removable PSU and LED Modules Access wiring system T5 and T6 variants (T4 as standard)	
Intelligent Emergency Battery Back-up								
Battery			Ni/Cd 12V				Ni/Cd 12V	
Up to 3hrs @ 25% power Other options available			Up to 3hrs @ 25% power Other options available					
Duration			20 hours		20 hours			
Charge Time			Automatic self-testing		Automatic self-testing			
Additional Features								
Part Codes								
	SPZ-WL84		SPZ-WL84-EMX25		SPZ-WL84-1200		SPZ-WL84-1200-EMX25	



Certification	ATEX, IEC Ex and UKEX rated for Zone 2 (Gas) and Zone 22 (Dust) CID2 and ABS Approved	ATEX, IEC Ex and UKEX rated for Zone 2 (Gas) and Zone 22 (Dust) CID2 and ABS Approved	ATEX, IEC Ex and UKEX rated for Zone 2 (Gas) and Zone 22 (Dust) ABS Approved
Beam Angles	120° as standard Other beam angles available	120° as standard Other beam angles available	120° as standard Other beam angles available
Input	110-254V AC 50/60Hz 110-254V DC	110-254V 50/60Hz AC onl	110-254V AC 50/60Hz 110-254V DC
Consumption	48W	56W	96W
LED type	Platinum Elite SMT LEDs	Platinum Elite SMT LEDs	Platinum Elite SMT LEDs
Number of LEDs	80	80	160
Power output (luminous flux)	Up to 7,048 lm	Up to 7,048 lm	Up to 14,096 lm
Wavelength	White-Light	White-Light	White-Light
IP Rating	IP66 & IP67	IP66 & IP67	IP66 & IP67
Temperature Range	-40°C to +60°C (-40°F to +140°F)	-20°C to +50°C (-4°F to +122°F)	-20°C to +50°C (-4°F to +122°F)
Colour Temperature (White-Light)	6500K standard	6500K standard	6,500K standard
Colour	Silver (RAL 9006)	Silver (RAL 9006) Emergency Cover - Red (RAL 3024)	Silver (RAL 9006)
Weight	6kg (13.2lbs)	7kg (15.4lbs)	10kg (22lbs)
Dimensions	775 x 108 x 174mm (30.5 x 4.3 x 6.9") Equivalent to 2 x 18W T8 Fluorescent	880 x 108 x 174mm (34.6 x 4.3 x 6.9") Equivalent to 2 x 18W T8 Fluorescent	1295 x 108 x 174mm (51 x 4.3 x 6.9") Equivalent to a 2x36W T8 Fluorescent
Additional Features	CoolExtrude™ Thermal Management Removable PSU and LED Modules Access wiring system T5 and T6 variants (T4 as standard)	CoolExtrude™ Thermal Management Removable PSU and LED Modules Access wiring system T5 and T6 variants (T4 as standard)	CoolExtrude™ Thermal Management Removable PSU and LED Modules Access wiring system T5 and T6 variants (T4 as standard)
Intelligent Emergency Battery Back-up			
Battery		Ni/Cd 12V	
Duration		Up to 3hrs @ 25% power Other options available	
Charge Time		20 hours	
Additional Features		Automatic self-testing	
Part Codes			
	SPZ-WL84-HO	SPZ-WL84-HO-EMX25	SPZ-WL168-HO

NEW SPARTAN RECESS



UK
CA

Outstanding Performance

SPARTAN Recess provides up to 7,400 lumens available or choose the High Output variant for up to 12,316 lumens*.

Lightweight Design

SPARTAN Recess is built 50% lighter than equivalent products. Its lightweight design allows for easier installation and reduces the weight load on the ceiling.



Wide Operating Temperature

SPARTAN Recess has wide operating temperature of -40° to 60°C (50°C with insulation) as standard and -20° to 50° (40°C with insulation) on emergency variants to suit the most challenging environments.

Designed for you

Recess has been designed in a range of standard and custom sizes to suit a variety of ceiling types.

*Model dependent



Easy Maintenance

Recess luminaires have been designed with maintenance in mind, featuring an innovative, lightweight, modular design to allow access from below and above the ceiling for quick and easy on-site servicing.

Accessories

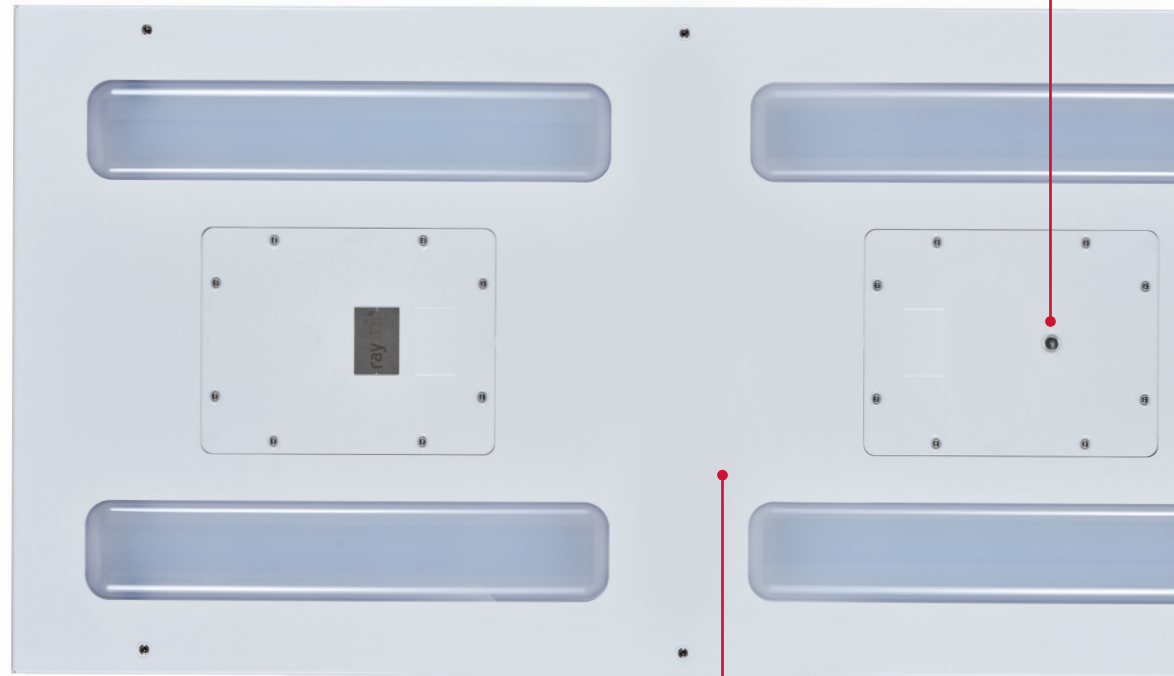
Purchase our Swing Arm Bracket or our Drop Rod Bracket with your SPARTAN Recess fitting to make installation quick and easy.

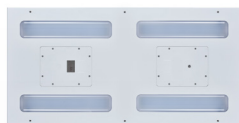
Intelligent and Controllable

Recess comes DALI 2.0 Dimmable as standard on non-emergency variants for precise and flexible control of lighting assets.

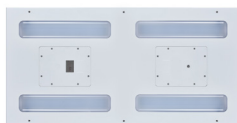
Self Testing Intelligent Emergency

The Intelligent Emergency system self-tests the battery and communicates the status via a tri-colour LED indicator, ensuring the luminaire is operating correctly and the emergency battery system is functioning at its optimum.





SPARTAN 
RECESS MODULAR 600x1200



SPARTAN 
RECESS MODULAR 600x1200 Emergency



SPARTAN 
RECESS MODULAR 300x1200



SPARTAN 
RECESS MODULAR 300x1200 Emergency



SPARTAN 
RECESS MODULAR 600x600



SPARTAN 
RECESS MODULAR 600x600 Emergency

Certification	ATEX, IEC Ex and UKEX rated for Zone 1 (Gas) and Zone 21 (Dust)	ATEX, IEC Ex and UKEX rated for Zone 1 (Gas) and Zone 21 (Dust)	ATEX, IEC Ex and UKEX rated for Zone 1 (Gas) and Zone 21 (Dust)	ATEX, IEC Ex and UKEX rated for Zone 1 (Gas) and Zone 21 (Dust)	ATEX, IEC Ex and UKEX rated for Zone 1 (Gas) and Zone 21 (Dust)	ATEX, IEC Ex and UKEX rated for Zone 1 (Gas) and Zone 21 (Dust)
Beam Angles	120° x 120° as standard Other optics available	120° x 120° as standard Other optics available	120° x 120° as standard Other optics available	120° x 120° as standard Other optics available	120° x 120° as standard Other optics available	120° x 120° as standard Other optics available
Input	Standard: 110-277Vac 50/60Hz 110-254Vdc Low voltage version: 18-48V AC and 18-69V DC	110-277VAC 50/60Hz	Standard: 110-277Vac 50/60Hz 110-254Vdc Low voltage version: 18-48V AC and 18-69V DC	110-277VAC 50/60Hz	Standard: 110-277Vac 50/60Hz 110-254Vdc Low voltage version: 18-48V AC and 18-69V DC	110-277VAC 50/60Hz
Consumption	46W (High Output - 92W)	56W	23W (High Output - 46W)	32W	23W (High Output - 46W)	32W
LED type	Platinum Elite SMT LEDs	Platinum Elite SMT LEDs	Platinum Elite SMT LEDs	Platinum Elite SMT LEDs	Platinum Elite SMT LEDs	Platinum Elite SMT LEDs
Number of LEDs	320	320	160	160	160	160
Power output (luminous flux)	6158lm (High Output - 12316lm)	6158lm	3079lm (High Output - 6158lm)	3079lm	3079lm (High Output - 6158lm)	3079lm
Wavelength	White-Light	White-Light	White-Light	White-Light	White-Light	White-Light
IP Rating	IP65	IP65	IP65	IP65	IP65	IP65
Temperature Range	-40° to +60°C (+50°C with insulation) (-40° to +140°F (+122°F with insulation))	-20° to +50°C (+40°C with insulation) (-4° to +122°F (+104°F with insulation))	-40° to +60°C (+50°C with insulation) (-40° to +140°F (+122°F with insulation))	-20° to +50°C (+40°C with insulation) (-4° to +122°F (+104°F with insulation))	-40° to +60°C (+50°C with insulation) (-40° to +140°F (+122°F with insulation))	-20° to +50°C (+40°C with insulation) (-4° to +140°F (+104°F with insulation))
Colour Temperature (White-Light)	6,500K	6,500K	6,500K	6,500K	6,500K	6,500K
Colour	Fine Texture White (RAL 9016)	Fine Texture White (RAL 9016)	Fine Texture White (RAL 9016)	Fine Texture White (RAL 9016)	Fine Texture White (RAL 9016)	Fine Texture White (RAL 9016)
Weight	14kg (30.9lbs)	15.6kg (34.4lbs)	7kg (15.4lbs)	7.8kg (17.2lbs)	7kg (15.4lbs)	7.8kg (17.2lbs)
Dimensions	595 x 1195 x 90 (23.4 x 47 x 3.5)	595 x 1195 x 90 (23.4 x 47 x 3.5)	295 x 1195 x 90 (11.6 x 47 x 3.5)	295 x 1195 x 90 (11.6 x 47 x 3.5)	595 x 595 x 90 (23.4 x 23.4 x 3.5)	595 x 595 x 90 (23.4 x 23.4 x 3.5)
Additional Features	Removable PSU Front access wiring system T4 Rating	Removable PSU Front access wiring system T4 Rating	Removable PSU Front access wiring system T4 Rating	Removable PSU Front access wiring system T4 Rating	Removable PSU Front access wiring system T4 Rating	Removable PSU Front access wiring system T4 Rating

Emergency Battery Back-up

Battery	Ni/Cd	Ni/Cd	Ni/Cd	Ni/Cd
Duration	Up to 3hrs @ 13% power Other options available	Up to 3hrs @ 25% power Other options available	Up to 3hrs @ 25% power Other options available	Up to 3hrs @ 25% power Other options available
Charge Time	20 Hours	20 Hours	20 Hours	20 Hours
Additional Features	Tri-colour LED indicator	Tri-colour LED indicator	Tri-colour LED indicator	Tri-colour LED indicator

Part Codes

Circular beam pattern	SPX-RCM612, SPX-RCM612-6060, SPX-RCM612-9090, SPX-RCM612-3030, SPX-RCM612-HO, SPX-RCM612-HO-6060, SPX-RCM612-HO-9090, SPX-RCM612-HO-3030	SPX-RCM612-EMX13, SPX-RCM612-EMX13-6060, SPX-RCM612-EMX13-9090, SPX-RCM612-EMX13-3030	SPX-RCM312, SPX-RCM312-6060, SPX-RCM312-9090, SPX-RCM312-3030, SPX-RCM312-HO, SPX-RCM312-HO-6060, SPX-RCM312-HO-9090, SPX-RCM312-HO-3030	SPX-RCM312-EMX25, SPX-RCM312-EMX25-6060, SPX-RCM312-EMX25-9090, SPX-RCM312-EMX25-3030,	SPX-RCM66, SPX-RCM66-6060, SPX-RCM66-9090, SPX-RCM66-3030, SPX-RCM66-HO, SPX-RCM66-HO-6060, SPX-RCM66-HO-9090, SPX-RCM66-HO-3030	SPX-RCM66-EMX25, SPX-RCM66-EMX25-6060, SPX-RCM66-EMX25-9090, SPX-RCM66-EMX25-3030,
Elliptical beam pattern	SPX-RCM612-WB, SPX-RCM612-PP3, SPX-RCM612-D, SPX-RCM612-HO-WB, SPX-RCM612-HO-PP3, SPX-RCM612-HO-D	SPX-RCM612-EMX13-WB, SPX-RCM612-EMX13-PP3, SPX-RCM612-EMX13-D	SPX-RCM312-WB, SPX-RCM312-PP3, SPX-RCM312-D, SPX-RCM312-HO-WB, SPX-RCM312-HO-PP3, SPX-RCM312-HO-D	SPX-RCM312-EMX25-WB, SPX-RCM312-EMX25-PP3, SPX-RCM312-EMX25-D,	SPX-RCM66-WB, SPX-RCM66-PP3, SPX-RCM66-D, SPX-RCM66-HO-WB, SPX-RCM66-HO-PP3, SPX-RCM66-HO-D	SPX-RCM66-EMX25-WB, SPX-RCM66-EMX25-PP3, SPX-RCM66-EMX25-D,



SPARTAN 
RECESS PLANK 275x1400



SPARTAN 
RECESS PLANK 275x1400 Emergency



SPARTAN 
RECESS PLANK 275x800



SPARTAN 
RECESS PLANK 275x800 Emergency

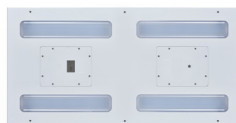
Certification	ATEX, IEC Ex and UKEX rated for Zone 1 (Gas) and Zone 21 (Dust)	ATEX, IEC Ex and UKEX rated for Zone 1 (Gas) and Zone 21 (Dust)	ATEX, IEC Ex and UKEX rated for Zone 1 (Gas) and Zone 21 (Dust)	ATEX, IEC Ex and UKEX rated for Zone 1 (Gas) and Zone 21 (Dust)
Beam Angles	120° x 120° as standard Other optics available	120° x 120° as standard Other optics available	120° x 120° as standard Other optics available	120° x 120° as standard Other optics available
Input	Standard: 110-277Vac 50/60Hz 110-254Vdc Low voltage version: 18-48V AC and 18-69V DC	110-277VAC 50/60Hz	Standard: 110-277Vac 50/60Hz 110-254Vdc Low voltage version: 18-48V AC and 18-69V DC	110-277VAC 50/60Hz
Consumption	23W (High Output - 46W)	32W	23W	32W
LED type	Platinum Elite SMT LEDs	Platinum Elite SMT LEDs	Platinum Elite SMT LEDs	Platinum Elite SMT LEDs
Number of LEDs	160	160	80	80
Power output (luminous flux)	3079lm (High Output - 6158lm)	3079lm	3079lm	3079lm
Wavelength	White-Light	White-Light	White-Light	White-Light
IP Rating	IP65	IP65	IP65	IP65
Temperature Range	-40° to +60°C (+50°C with insulation) (-40° to +140°F (+122°F with insulation))	-20° to +50°C (+40°C with insulation) (-4° to +122°F (+104°F with insulation))	-40° to +60°C (+50°C with insulation) (-40° to +140°F (+122°F with insulation))	-20° to +50°C (+40°C with insulation) (-4° to +122°F (+104°F with insulation))
Colour Temperature (White-Light)	6,500K	6,500K	6,500K	6,500K
Colour	Fine Texture White (RAL 9016)	Fine Texture White (RAL 9016)	Fine Texture White (RAL 9016)	Fine Texture White (RAL 9016)
Weight	7kg (15.4lbs)	7.8kg (17.2lbs)	5kg (11lbs)	5.8kg (12.8lbs)
Dimensions	310 x 1435 x 90 (12.2 x 56.5 x 3.5)	310 x 1435 x 90 (12.2 x 56.5 x 3.5)	310 x 820 x 90 (12.2 x 32.3 x 3.5)	310 x 820 x 90 (12.2 x 32.3 x 3.5)
Additional Features	Removable PSU Front access wiring system T4 Rating	Removable PSU Front access wiring system T4 Rating	Removable PSU Front access wiring system T4 Rating	Removable PSU Front access wiring system T4 Rating

Intelligent Emergency Battery Back-up

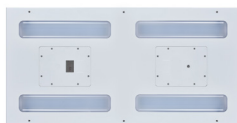
Battery	Ni/Cd	Ni/Cd
Duration	Up to 3hrs @ 25% power Other options available	Up to 3hrs @ 25% power Other options available
Charge Time	20 Hours	20 Hours
Additional Features	Tri-colour LED indicator	Tri-colour LED indicator

Part Codes

Circular beam pattern	SPX-RCP314, SPX-RCP314-120x120, SPX-RCP314-6060, SPX-RCP314-9090, SPX-RCP314-3030, SPX-RCP314-HO-120x120, SPX-RCP314-HO-6060, SPX-RCP314-HO-9090, SPX-RCP314-HO-3030,	SPX-RCP314-EMX25, SPX-RCP314-EMX25-120x120, SPX-RCP314-EMX25-6060, SPX-RCP314-EMX25-9090, SPX-RCP314-EMX25-3030,	SPX-RCP308, SPX-RCP308-120x120, SPX-RCP308-6060, SPX-RCP308-9090, SPX-RCP308-3030, SPX-RCP308-HO-120x120, SPX-RCP308-HO-6060, SPX-RCP308-HO-9090, SPX-RCP308-HO-3030,	SPX-RCP308-EMX25, SPX-RCP308-EMX25-120x120, SPX-RCP308-EMX25-6060, SPX-RCP308-EMX25-9090, SPX-RCP308-EMX25-3030,
Elliptical beam pattern	SPX-RCP314-WB, SPX-RCP314-PP3, SPX-RCP314-D, SPX-RCP314-HO-WB, SPX-RCP314-HO-PP3, SPX-RCP314-HO-D,	SPX-RCP314-EMX25-WB, SPX-RCP314-EMX25-PP3, SPX-RCP314-EMX25-D,	SPX-RCP308-WB, SPX-RCP308-PP3, SPX-RCP303-D, SPX-RCP308-HO-WB, SPX-RCP308-HO-PP3, SPX-RCP303-HO-D,	SPX-RCP308-EMX25-WB, SPX-RCP308-EMX25-PP3, SPX-RCP303-EMX25-D,



SPARTAN **RECESS MODULAR** 600x1200



SPARTAN **RECESS MODULAR** 600x1200 Emergency



SPARTAN **RECESS MODULAR** 300x1200



SPARTAN **RECESS MODULAR** 300x1200 Emergency



SPARTAN **RECESS MODULAR** 600x600



SPARTAN **RECESS MODULAR** 600x600 Emergency

Certification	ATEX, IEC Ex and UKEX rated for Zone 2 (Gas) and Zone 22 (Dust)	ATEX, IEC Ex and UKEX rated for Zone 2 (Gas) and Zone 22 (Dust)	ATEX, IEC Ex and UKEX rated for Zone 2 (Gas) and Zone 22 (Dust)	ATEX, IEC Ex and UKEX rated for Zone 2 (Gas) and Zone 22 (Dust)	ATEX, IEC Ex and UKEX rated for Zone 2 (Gas) and Zone 22 (Dust)	ATEX, IEC Ex and UKEX rated for Zone 2 (Gas) and Zone 22 (Dust)
Beam Angles	120° x 120° as standard Other optics available	120° x 120° as standard Other optics available	120° x 120° as standard Other optics available	120° x 120° as standard Other optics available	120° x 120° as standard Other optics available	120° x 120° as standard Other optics available
Input	Standard: 110-277Vac 50/60Hz 110-254Vdc Low voltage version: 18-48V AC and 18-69V DC	110-277VAC 50/60Hz	Standard: 110-277Vac 50/60Hz 110-254Vdc Low voltage version: 18-48V AC and 18-69V DC	110-277VAC 50/60Hz	Standard: 110-277Vac 50/60Hz 110-254Vdc Low voltage version: 18-48V AC and 18-69V DC	110-277VAC 50/60Hz
Consumption	46W (High Output - 92W)	56W	23W (High Output - 46W)	32W	23W (High Output - 46W)	32W
LED type	Platinum Elite SMT LEDs	Platinum Elite SMT LEDs	Platinum Elite SMT LEDs	Platinum Elite SMT LEDs	Platinum Elite SMT LEDs	Platinum Elite SMT LEDs
Number of LEDs	320	320	160	160	160	160
Power output (luminous flux)	7400lm (High Output - 12316lm)	7400lm	3700lm (High Output - 7400lm)	3700lm	3700lm (High Output - 7400lm)	3700lm
Wavelength	White-Light	White-Light	White-Light	White-Light	White-Light	White-Light
IP Rating	IP65	IP65	IP65	IP65	IP65	IP65
Temperature Range	-40° to +60°C (+50°C with insulation) (-40° to +140°F (+122°F with insulation))	-20° to +50°C (+40°C with insulation) (-4° to +122°F (+104°F with insulation))	-40° to +60°C (+50°C with insulation) (-40° to +140°F (+122°F with insulation))	-20° to +50°C (+40°C with insulation) (-4° to +122°F (+104°F with insulation))	-40° to +60°C (+50°C with insulation) (-40° to +140°F (+122°F with insulation))	-20° to +50°C (+40°C with insulation) (-4° to +122°F (+104°F with insulation))
Colour Temperature (White-Light)	6,500K	6,500K	6,500K	6,500K	6,500K	6,500K
Colour	Fine Texture White (RAL 9016)	Fine Texture White (RAL 9016)	Fine Texture White (RAL 9016)	Fine Texture White (RAL 9016)	Fine Texture White (RAL 9016)	Fine Texture White (RAL 9016)
Weight	14kg (30.9lbs)	15.6kg (34.4lbs)	7kg (15.4lbs)	7.8kg (17.2lbs)	7kg (15.4lbs)	7.8kg (17.2lbs)
Dimensions	595 x 1195 x 90 (23.4 x 47 x 3.5)	595 x 1195 x 90 (23.4 x 47 x 3.5)	295 x 1195 x 90 (11.6 x 47 x 3.5)	295 x 1195 x 90 (11.6 x 47 x 3.5)	595 x 595 x 90 (23.4 x 23.4 x 3.5)	595 x 595 x 90 (23.4 x 23.4 x 3.5)
Additional Features	Removable PSU Front access wiring system T4 Rating	Removable PSU Front access wiring system T4 Rating	Removable PSU Front access wiring system T4 Rating	Removable PSU Front access wiring system T4 Rating	Removable PSU Front access wiring system T4 Rating	Removable PSU Front access wiring system T4 Rating

Emergency Battery Back-up

Battery	Ni/Cd	Ni/Cd	Ni/Cd	Ni/Cd	Ni/Cd	Ni/Cd
Duration	Up to 3hrs @ 13% power Other options available	Up to 3hrs @ 25% power Other options available	Up to 3hrs @ 25% power Other options available	Up to 3hrs @ 25% power Other options available	Up to 3hrs @ 25% power Other options available	Up to 3hrs @ 25% power Other options available
Charge Time	20 Hours	20 Hours	20 Hours	20 Hours	20 Hours	20 Hours
Additional Features	Tri-colour LED indicator	Tri-colour LED indicator	Tri-colour LED indicator	Tri-colour LED indicator	Tri-colour LED indicator	Tri-colour LED indicator

Part Codes

Circular beam pattern	SPZ-RCM612, SPZ-RCM612-6060, SPZ-RCM612-9090, SPZ-RCM612-3030, SPZ-RCM612-HO, SPZ-RCM612-HO-6060, SPZ-RCM612-HO-9090, SPZ-RCM612-HO-3030	SPZ-RCM612-EMX13, SPZ-RCM612-EMX13-6060, SPZ-RCM612-EMX13-9090, SPZ-RCM612-EMX13-3030	SPZ-RCM312, SPZ-RCM312-6060, SPZ-RCM312-9090, SPZ-RCM312-3030, SPZ-RCM312-HO, SPZ-RCM312-HO-6060, SPZ-RCM312-HO-9090, SPZ-RCM312-HO-3030	SPZ-RCM312-EMX25, SPZ-RCM312-EMX25-6060, SPZ-RCM312-EMX25-9090, SPZ-RCM312-EMX25-3030,	SPZ-RCM66, SPZ-RCM66-6060, SPZ-RCM66-9090, SPZ-RCM66-3030, SPZ-RCM66-HO, SPZ-RCM66-HO-6060, SPZ-RCM66-HO-9090, SPZ-RCM66-HO-3030	SPZ-RCM66-EMX25, SPZ-RCM66-EMX25-6060, SPZ-RCM66-EMX25-9090, SPZ-RCM66-EMX25-3030,
Elliptical beam pattern	SPZ-RCM612-WB, SPZ-RCM612-PP3, SPZ-RCM612-D, SPZ-RCM612-HO-WB, SPZ-RCM612-HO-PP3, SPZ-RCM612-HO-D	SPZ-RCM612-EMX13-WB, SPZ-RCM612-EMX13-PP3, SPZ-RCM612-EMX13-D	SPZ-RCM312-WB, SPZ-RCM312-PP3, SPZ-RCM312-D, SPZ-RCM312-HO-WB, SPZ-RCM312-HO-PP3, SPZ-RCM312-HO-D	SPZ-RCM312-EMX25-WB, SPZ-RCM312-EMX25-PP3, SPZ-RCM312-EMX25-D,	SPZ-RCM66-WB, SPZ-RCM66-PP3, SPZ-RCM66-D, SPZ-RCM66-HO-WB, SPZ-RCM66-HO-PP3, SPZ-RCM66-HO-D	SPZ-RCM66-EMX25-WB, SPZ-RCM66-EMX25-PP3, SPZ-RCM66-EMX25-D,



SPARTAN **RECESS PLANK 275x1400**



SPARTAN **RECESS PLANK 275x1400 Emergency**



SPARTAN **RECESS PLANK 275x800**



SPARTAN **RECESS PLANK 275x800 Emergency**

Certification	ATEX, IEC Ex and UKEX rated for Zone 2 (Gas) and Zone 22 (Dust)	ATEX, IEC Ex and UKEX rated for Zone 2 (Gas) and Zone 22 (Dust)	ATEX, IEC Ex and UKEX rated for Zone 2 (Gas) and Zone 22 (Dust)	ATEX, IEC Ex and UKEX rated for Zone 2 (Gas) and Zone 22 (Dust)
Beam Angles	120° x 120° as standard Other optics available	120° x 120° as standard Other optics available	120° x 120° as standard Other optics available	120° x 120° as standard Other optics available
Input	Standard: 110-277Vac 50/60Hz 110-254Vdc Low voltage version: 18-48V AC and 18-69V DC	110-277VAC 50/60Hz	Standard: 110-277Vac 50/60Hz 110-254Vdc Low voltage version: 18-48V AC and 18-69V DC	110-277VAC 50/60Hz
Consumption	23W (High Output - 46W)	32W	23W	32W
LED type	Platinum Elite SMT LEDs	Platinum Elite SMT LEDs	Platinum Elite SMT LEDs	Platinum Elite SMT LEDs
Number of LEDs	160	160	80	80
Power output (luminous flux)	3700lm	3700lm	3700lm (High Output - 7400lm)	3700lm
Wavelength	White-Light	White-Light	White-Light	White-Light
IP Rating	IP65	IP65	IP65	IP65
Temperature Range	-40° to +60°C (+50°C with insulation) (-40° to +140°F (+122°F with insulation))	-20° to +50°C (+40°C with insulation) (-4° to +122°F (+104°F with insulation))	-40° to +60°C (+50°C with insulation) (-40° to +140°F (+122°F with insulation))	-20° to +50°C (+40°C with insulation) (-4° to +122°F (+104°F with insulation))
Colour Temperature (White-Light)	6,500K	6,500K	6,500K	6,500K
Colour	Fine Texture White (RAL 9016)	Fine Texture White (RAL 9016)	Fine Texture White (RAL 9016)	Fine Texture White (RAL 9016)
Weight	7kg (15.4lbs)	7.8kg (17.2lbs)	5kg (11lbs)	5.8kg (12.8lbs)
Dimensions	310 x 1435 x 90 (12.2 x 56.5 x 3.5)	310 x 1435 x 90 (12.2 x 56.5 x 3.5)	310 x 820 x 90 (12.2 x 32.3 x 3.5)	310 x 820 x 90 (12.2 x 32.3 x 3.5)
Additional Features	Removable PSU Front access wiring system T4 Rating	Removable PSU Front access wiring system T4 Rating	Removable PSU Front access wiring system T4 Rating	Removable PSU Front access wiring system T4 Rating

Intelligent Emergency Battery Back-up

Battery		Ni/Cd		Ni/Cd
Duration		Up to 3hrs @ 25% power Other options available		Up to 3hrs @ 25% power Other options available
Charge Time		20 Hours		20 Hours
Additional Features		Tri-colour LED indicator		Tri-colour LED indicator

Part Codes

Circular beam pattern	SPZ-RCP314, SPZ-RCP314-120x120, SPZ-RCP314-6060, SPZ-RCP314-9090, SPZ-RCP314-3030, SPZ-RCP314-HO-120x120, SPZ-RCP314-HO-6060, SPZ-RCP314-HO-9090, SPZ-RCP314-HO-3030,	SPZ-RCP314-EMX25, SPZ-RCP314-EMX25-120x120, SPZ-RCP314-EMX25-6060, SPZ-RCP314-EMX25-9090, SPZ-RCP314-EMX25-3030,	SPZ-RCP314, SPZ-RCP308-120x120, SPZ-RCP308-6060, SPZ-RCP308-9090, SPZ-RCP308-3030, SPZ-RCP308-HO-120x120, SPZ-RCP308-HO-6060, SPZ-RCP308-HO-9090, SPZ-RCP308-HO-3030,	SPZ-RCP314-EMX25, SPZ-RCP308-EMX25-120x120, SPZ-RCP308-EMX25-6060, SPZ-RCP308-EMX25-9090, SPZ-RCP308-EMX25-3030,
Elliptical beam pattern	SPZ-RCP314-WB, SPZ-RCP314-PP3, SPZ-RCP314-D, SPZ-RCP314-HO-WB, SPZ-RCP314-HO-PP3, SPZ-RCP314-HO-D,	SPZ-RCP314-EMX25-WB, SPZ-RCP314-EMX25-PP3, SPZ-RCP314-EMX25-D,	SPZ-RCP308-WB, SPZ-RCP308-PP3, SPZ-RCP303-D, SPZ-RCP308-HO-WB, SPZ-RCP308-HO-PP3, SPZ-RCP303-HO-D,	SPZ-RCP308-EMX25-WB, SPZ-RCP308-EMX25-PP3, SPZ-RCP303-EMX25-D,

SPARTAN

BULKHEAD



LED Friendly

SPARTAN Bulkhead uses CoolExtrude™ thermal management technology, ensuring a much cooler LED operating temperature. This provides up to 60% better heat dissipation compared to traditional lighting solutions and allows the product to operate for 10+ years in the most challenging environments.

Intelligent Emergency Back-Up

SPARTAN Bulkhead is available as an emergency variant, which can run up to 100% light output under emergency conditions. All SPARTAN Bulkhead emergency units come with intelligent battery management to proactively monitor and maintain the overall health of your luminaire.

Compact

SPARTAN Bulkhead has a compact, low profile design for restricted space applications. The location of the cable entries means the luminaire can be mounted virtually flush to a flat surface, and allow loop in, loop out wiring.

Robust

Housed in marine grade aluminium with stainless steel fasteners and brackets, SPARTAN Bulkhead is IP66 and IP67 rated and can survive in the most extreme environments.

Wide Operating Temperature

An operating temperature range of -50°C to +55°C* with a T4/T5 rating means SPARTAN Bulkhead is suitable for even the most challenging conditions.

** Emergency variants have an operating temperature of -20°C to +46°C*



SPARTAN
BULKHEAD BL24



SPARTAN
BULKHEAD BL24 Emergency



SPARTAN
BULKHEAD BL24



SPARTAN
BULKHEAD BL24 Emergency

Certification	ATEX, IEC Ex and UKEX rated for Zone 1 (Gas) and Zone 21 (Dust) ABS Approved	ATEX, IEC Ex and UKEX rated for Zone 1 (Gas) and Zone 21 (Dust) ABS Approved	ATEX, IEC Ex and UKEX rated for Zone 2 (Gas) and Zone 22 (Dust) ABS Approved	ATEX, IEC Ex and UKEX rated for Zone 2 (Gas) and Zone 22 (Dust) ABS Approved
Beam Angles	10° x 10° / 30° x 30° / 50° x 50° and 120° x 120° (circular) 35° x 10° / 60 x25° / 80° x 30° and 120° x 50° (elliptical)	10° x 10° / 30° x 30° / 50° x 50° and 120° x 120° (circular) 35° x 10° / 60 x25° / 80° x 30° and 120° x 50° (elliptical)	10° x 10° / 30° x 30° / 50° x 50° and 120° x 120° (circular) 35° x 10° / 60 x25° / 80° x 30° and 120° x 50° (elliptical)	10° x 10° / 30° x 30° / 50° x 50° and 120° x 120° (circular) 35° x 10° / 60 x25° / 80° x 30° and 120° x 50° (elliptical)
Input	110-254V 50/60Hz AC only Low voltage: 18-48V AC and 18-69V DC	110-254V 50/60Hz AC only	110-254V 50/60Hz AC only Low voltage: 18-48V AC and 18-69V DC	110-254V 50/60Hz AC only
Consumption	20W	24W	20W	24W
LED type	Platinum Elite SMT LEDs	Platinum Elite SMT LEDs	Platinum Elite SMT LEDs	Platinum Elite SMT LEDs
Number of LEDS	24	24	24	24
Power output (luminous flux)	BL24-HO - 4,250 lm – circular beam patterns 4,000 lm – elliptical beam patterns (VARIO) BL24 - 2,500 lm – circular beam patterns 2,250 lm – elliptical beam patterns (VARIO)	BL24-HO-EMX25 - 4,250 lm – circular beam patterns 4,000 lm – elliptical beam patterns (VARIO) BL24-EMX25 - 2,500 lm – circular beam patterns 2,250 lm – elliptical beam patterns (VARIO)	BL24-HO - 4,650 lm – circular beam patterns 4,100 lm – elliptical beam patterns (VARIO) BL24 - 2,750 lm – circular beam patterns 2,500 lm – elliptical beam patterns (VARIO)*	BL24-HO-EMX25 - 4,650 lm – circular beam patterns 4,100 lm – elliptical beam patterns (VARIO) BL24-EMX25 - 2,750 lm – circular beam patterns 2,500 lm – elliptical beam patterns (VARIO)*
Wavelength	White-Light	White-Light	White-Light	White-Light
IP Rating	IP66 & IP67	IP66 & IP67	IP66 & IP67	IP66 & IP67
Temperature Range	-50°C to +55°C (-58°F to +131°F)	-20°C to +46°C (-4°F to +114°F)	-50°C to +55°C (-58°F to +131°F)	-20°C to +55°C (-4°F to +131°F)
Colour Temperature (White-Light)	6,000K+	6,000K+	6,000K+	6,000K+
Colour	Silver (RAL 9006)	Silver (RAL 9006)	Silver (RAL 9006)	Silver (RAL 9006)
Weight	5kg (11.0lbs)	6kg (13.2lbs)	5kg (11.0lbs)	6kg (13.2lbs)
Dimensions	288 x 220 x 122mm (11.3 x 8.7 x 4.8")	288 x 220 x 122mm (11.3 x 8.7 x 4.8")	288 x 220 x 122mm (11.3 x 8.7 x 4.8")	288 x 220 x 122mm (11.3 x 8.7 x 4.8")
Additional Features	CoolExtrude™ Thermal Management Removable PSU and LED modules Access wiring system T4 Rating	CoolExtrude™ Thermal Management Removable PSU and LED modules Access wiring system T4 Rating	CoolExtrude™ Thermal Management Removable PSU and LED modules Access wiring system T4 Rating	CoolExtrude™ Thermal Management Removable PSU and LED modules Access wiring system T4 Rating

Intelligent Emergency Battery Back-up

Battery	2.5 Ah	2.5 Ah
Duration	Up to 3hrs @ 25% power Other options available	Up to 3hrs @ 25% power Other options available
Charge Time	20 hours	20 hours
Additional Features	Automatic self-testing	Automatic self-testing

Part Codes

Circular beam pattern	SPX-BL24-W-1010 / SPX-BL24-W-3030 SPX-BL24-W-5050 / SPX-BL24-W-120120	SPX-BL24-W-1010-EMX25 / SPX-BL24-W-3030-EMX25 SPX-BL24-W-5050-EMX25 / SPX-BL24-W-120120-EMX25	SPZ-BL24-W-1010 / SPZ-BL24-W-3030 SPZ-BL24-W-5050 / SPZ-BL24-W-120120	SPZ-BL24-W-1010-EMX25 / SPZ-BL24-W-3030-EMX25 SPZ-BL24-W-5050-EMX25 / SPZ-BL24-W-120120-EMX25
Elliptical beam pattern	SPX-BL24-W-3510 / SPX-BL24-W-6025 SPX-BL24-W-8030 / SPX-BL24-W-12050	SPX-BL24-W-3510-EMX25 / SPX-BL24-W-6025-EMX25 SPX-BL24-W-8030-EMX25 / SPX-BL24-W-12050-EMX25	SPZ-BL24-W-3510 / SPZ-BL24-W-6025 SPZ-BL24-W-8030 / SPZ-BL24-W-12050	SPZ-BL24-W-3510-EMX25 / SPZ-BL24-W-6025-EMX25 SPZ-BL24-W-8030-EMX25 / SPZ-BL24-W-12050-EMX25

SPARTAN

STREET

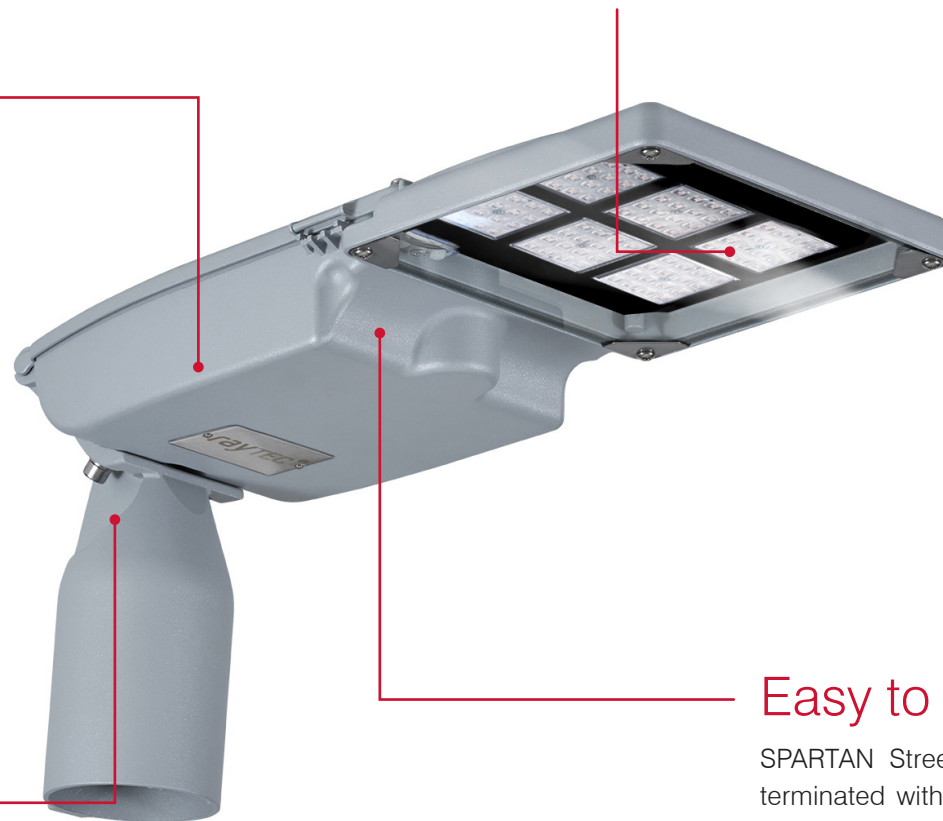


Energy Saving

With a low power consumption of 53W, and a high efficacy of 128lm/W, SPARTAN Street delivers significant energy savings and outstanding optical performance.

LED Friendly

Raytec are specialists in LEDs and all our products are designed around the LEDs with bespoke housing for optimum performance and reliability. This provides up to 60% better heat dissipation compared to traditional lighting solutions and allows the product to operate for 10+ years in the most challenging environments.



Ultra-Flexible

With an adjustable bracket that can be rotated 90°, the luminaire can be fixed to any column, bracket or pole in post top or side arm configuration. SPARTAN Street is also available with multiple beam patterns, including perimeter and general area optics, to suit a wide range of applications

Easy to Install

SPARTAN Street weighs only 6.5kg and comes pre-terminated with a 12M outdoor, 3 core, cold resistant, PVC cable for quick and easy installation.



Certification	ATEX, IEC Ex and UKEX rated for Zone 1 (Gas) and Zone 21 (Dust)	ATEX, IEC Ex and UKEX rated for Zone 2 (Gas) and Zone 22 (Dust)
Beam Angles	Perimeter/Pathway General Area Other options available	Perimeter/Pathway General Area Other options available
Input	110-254V AC 50/60Hz	110-254V AC 50/60Hz
Beam Angle System	Fixed	Fixed
Consumption	53W	53W
LED type	Platinum Elite SMT LEDs	Platinum Elite SMT LEDs
Number of LEDs	96	96
Power output (luminous flux)	6,770lm	8,300lm
Wavelength	White-Light	White-Light
IP Rating	IP66	IP66
Temperature Range	-40° to +50°C (-40° to +122°F)	-40° to +50°C (-40° to +122°F)
Colour Temperature (White-Light)	4,000K+	4,000K+
Colour	Silver (RAL 9006)	Silver (RAL 9006)
Weight	6.5kg (14.3lbs)	6.5kg (14.3lbs)
Dimensions	244 x 485 x 220mm (9.6" x 19.1" x 8.7")	244 x 485 x 220mm (9.6" x 19.1" x 8.7")
Spigot (pole) Diameter	Compatible with 76mm pole diameter (48mm & 60mm pole adaptors are available)	Compatible with 76mm pole diameter (48mm & 60mm pole adaptors are available)
Mounting	Integrated Spigot Mount with adjustable rotation	Integrated Spigot Mount with adjustable rotation
Additional Features	Removable PSU Access wiring system T4 Rating	Removable PSU Access wiring system T4 Rating
Part Codes		
Circular beam pattern	SPX-SL96-4K-PP1 / SPX-SL96-4K-PP2 / SPX-SL96-4K-PP3 / SPX-SL96-4K-AR1	SPZ-SL96-4K-PP1 / SPZ-SL96-4K-PP2 / SPZ-SL96-4K-PP3 / SPZ-SL96-4K-AR1

SPARTAN

CRANE LUMINAIRE



Vibration Resistant

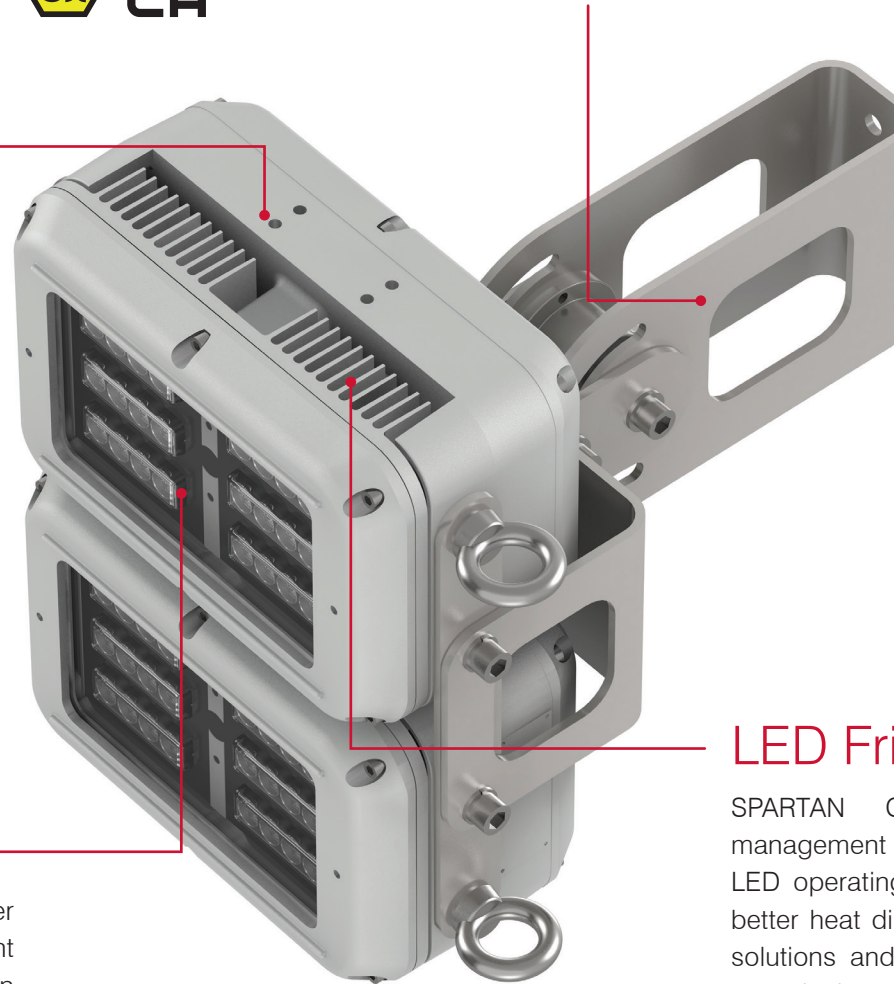
SPARTAN Crane uses high performance surface mount LEDs that are encapsulated in a silicone rubber compound. All power electronics in SPARTAN Crane are also encapsulated. The result is an outstanding resistance to vibration for the most demanding applications.

Ultra-Powerful

SPARTAN Crane integrates the latest high power LEDs with Raytec's field proven LED management and optic technology. This delivers a high lumen output of up to 18,600 lumens even during emergency operation when running off the integral battery.

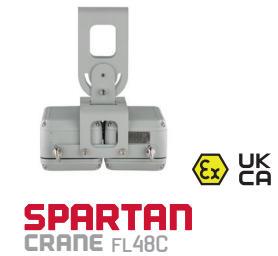
Self-Levelling

A stainless steel rotary damper ensures SPARTAN Crane always illuminates the area directly below the crane and prevents the luminaire swinging as the crane boom moves up and down.



LED Friendly

SPARTAN Crane uses CoolExtrude™ thermal management technology, ensuring a much cooler LED operating temperature. This provides up to 60% better heat dissipation compared to traditional lighting solutions and allows the product to operate for 10+ years in the most challenging environments.



Certification	ATEX, IEC Ex and UKEX rated for Zone 1 (Gas) and Zone 21 (Dust) ABS Approved	ATEX, IEC Ex and UKEX rated for Zone 2 (Gas) and Zone 22 (Dust) CID2 and ABS Approved
Beam Angles	10° x 10° (circular)	10° x 10° (circular)
Input	110-254V 50/60Hz AC only Low voltage: 18-48V AC and 18-69V DC Extra low voltage: 12V AC/DC	110-254V 50/60Hz AC only Low voltage: 18-48V AC and 18-69V DC Extra low voltage: 12V AC/DC
Consumption	136W	136W
LED type	Platinum Elite SMT LEDs	Platinum Elite SMT LEDs
Number of LEDS	48	48
Power output (luminous flux)	Up to 16,900 lm	Up to 18,600 lm
Wavelength	White-Light	White-Light
IP Rating	IP66 & IP67	IP66 & IP67
Temperature Range	-10°C to +55°C (+14°F to +131°F)	-10°C to +55°C (+14°F to +131°F)
Colour Temperature (White-Light)	6,000K+	6,000K+
Colour	Silver (RAL 9006)	Silver (RAL 9006)
Weight	25kg (55.1lbs)	25kg (55.1lbs)
Dimensions	312 x 375 x 467mm (12.3 x 14.8 x 13.5")	312 x 375 x 467mm (12.3 x 14.8 x 13.5")
Additional Features	Stainless steel rotary damper 2 x retention points for suspension cord CoolExtrude™ Thermal Management Removable PSU and LED modules Access wiring system T4 Rating	Stainless steel rotary damper 2 x retention points for suspension cord CoolExtrude™ Thermal Management Removable PSU and LED modules Access wiring system T4 Rating
Part Codes		
Circular beam pattern	SPX-FL48C-W-1010	SPZ-FL48C-W-1010

SPARTAN

BAY



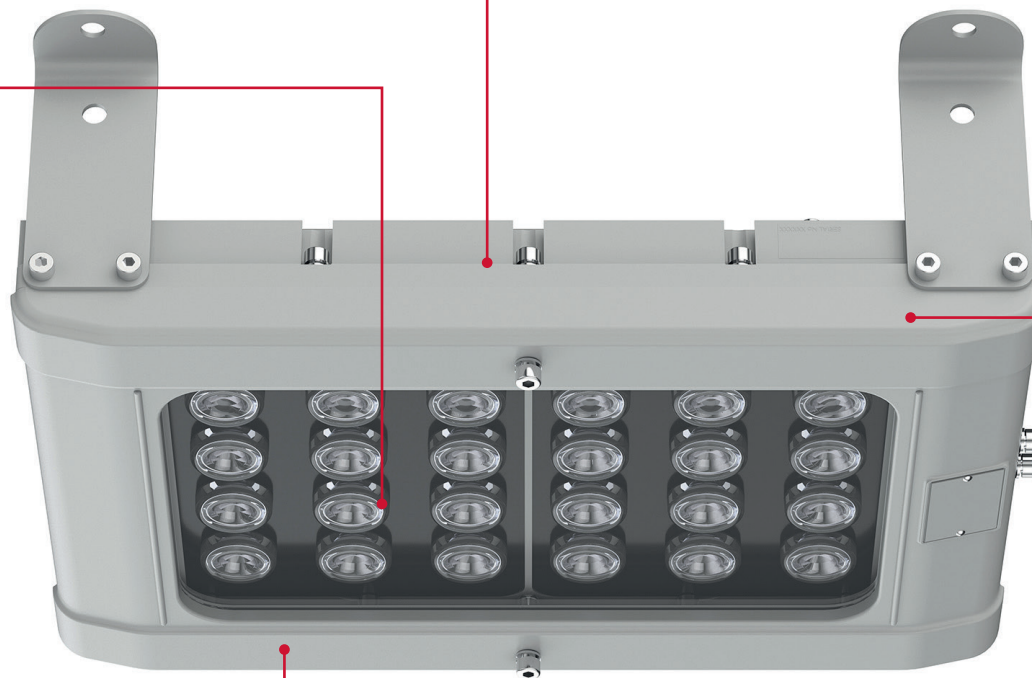
UK
CA

LED Friendly

SPARTAN Bay uses CoolExtrude™ thermal management technology, ensuring a much cooler LED operating temperature. This provides up to 60% better heat dissipation compared to traditional lighting solutions and allows the product to operate for 10+ years in the most challenging environments.

Ultra Powerful

SPARTAN Bay is designed for large hazardous areas which require powerful ceiling mounted White-Light illumination. SPARTAN Bay integrates the latest high power LEDs with Raytec's field proven LED management and optic technology, delivering a high lumen output of up to 34,000 lumens.



Intelligent Driver

SPARTAN Bay features an intelligent and fully programmable DALI enabled driver for seamless integration into your existing lighting infrastructure.

Flexible Installation And Easy Maintenance

The modular design allows great flexibility – the entire PSU chassis can be removed and located remotely at ground level for areas with difficult access. Additionally, the individual PSU modules can be easily accessed and replaced making servicing and inspection of all key components quicker and easier.



SPARTAN 
HIGH POWER BAY HPBY30K



SPARTAN 
HIGH POWER BAY HPBY25K



SPARTAN 
HIGH POWER BAY HPBY20K

Certification	ATEX, IEC Ex and UKEX rated for Zone 1 (Gas) and Zone 21 (Dust) ABS Approved	ATEX, IEC Ex and UKEX rated for Zone 1 (Gas) and Zone 21 (Dust) ABS Approved	ATEX, IEC Ex and UKEX rated for Zone 1 (Gas) and Zone 21 (Dust) ABS Approved
Angles	30° x 30° / 60° x 60° / 90° x 90°	30° x 30° / 60° x 60° / 90° x 90°	30° x 30° / 60° x 60° / 90° x 90°
Input	150-264V 50/60Hz AC/DC	150-264V 50/60Hz AC/DC	150-264V 50/60Hz AC/DC
Beam Shape	Circular	Circular	Circular
Beam Angle System	Fixed	Fixed	Fixed
Consumption	300W	250W	200W
LED type	Platinum Elite Multi-Core SMT LEDs	Platinum Elite Multi-Core SMT LEDs	Platinum Elite Multi-Core SMT LEDs
Number of LEDs	24	24	24
Power output (luminous flux)	29,134 lm	24,278 lm	19,423 lm
Wavelength	White-Light	White-Light	White-Light
IP Rating	IP66	IP66	IP66
Temperature Range	-50°C to +50°C (-58°F to +122°F)	-50°C to +50°C (-58°F to +122°F)	-50°C to +50°C (-58°F to +122°F)
Colour Temperature (White-Light)	5,700K	5,700K	5,700K
Colour	Silver (RAL 9006)	Silver (RAL 9006)	Silver (RAL 9006)
Weight	22.7kg (50lbs)	22.7kg (50lbs)	22.7kg (50lbs)
Dimensions	536 x 422 x 172mm (21.1 x 16.6 x 6.8")	536 x 422 x 172mm (21.1 x 16.6 x 6.8")	536 x 422 x 172mm (21.1 x 16.6 x 6.8")
Additional Features	CoolExtrude™ Thermal Management Removable PSU and LED modules DALI/Dimming as Standard Access wiring system T4 Rating	CoolExtrude™ Thermal Management Removable PSU and LED modules DALI/Dimming as Standard Access wiring system T4 Rating	CoolExtrude™ Thermal Management Removable PSU and LED modules DALI/Dimming as Standard Access wiring system T4 Rating
Part Codes			
Circular beam pattern	SPX-HPBY30K-W-3030 / SPX-HPBY30K-W-6060 / SPX-HPBY30K-W-9090	SPX-HPBY25K-W-3030 / SPX-HPBY25K-W-6060 / SPX-HPBY25K-W-9090	SPX-HPBY20K-W-3030 / SPX-HPBY20K-W-6060 / SPX-HPBY20K-W-9090

ZONE 1



SPARTAN 
MID POWER BAY MPBY15K



SPARTAN 
MID POWER BAY
MPFL15K Emergency



SPARTAN 
MID POWER BAY MPBY12.5K



SPARTAN 
MID POWER BAY
MPFL12.5K Emergency



SPARTAN 
MID POWER BAY MPBY10K

Certification	ATEX, IEC Ex and UKEX rated for Zone 1 (Gas) and Zone 21 (Dust) ABS Approved				
Beam Angles	30° x 30° or 60° x 60° or 90° x 90°				
Input	110-277V 50/60Hz AC only				
Beam Shape	Circular				
Beam Angle System	Fixed				
Consumption	120W				
LED type	Platinum Elite SMT LEDs				
Number of LEDS	48				
Power output (luminous flux)	14,263 lm				
Wavelength	White-Light				
IP Rating	IP66 & IP67				
Temperature Range	-40°C to +60°C (-40°F to +140°F)				
Colour Temperature (White-Light)	5,700K				
Colour	Silver (RAL 9006)				
Weight	13.2kg (29.1lbs)				
Dimensions	447 x 386 x 164mm (17.6 x 15.2 x 6.4")				
Additional Features	Removable PSU Front access wiring system T4 Rating				

Emergency Battery Back-up

Battery	NiMH 12V 6.0Ah				
Duration	180 or 90 mins depending on variant Other options available				
Charge Time	20 Hours				
Additional Features					

Part Codes

Circular beam pattern	SPX-MPBY15K-W-3030 / SPX-MPBY15K-W-6060 / SPX-MPBY15K-W-9090				
Elliptical beam pattern					



Certification	ATEX, IEC Ex and UKEX rated for Zone 1 (Gas) and Zone 21 (Dust)	ATEX, IEC Ex and UKEX rated for Zone 1 (Gas) and Zone 21 (Dust) ABS Approved	ATEX, IEC Ex and UKEX rated for Zone 1 (Gas) and Zone 21 (Dust)	ATEX, IEC Ex and UKEX rated for Zone 1 (Gas) and Zone 21 (Dust) ABS Approved	ATEX, IEC Ex and UKEX rated for Zone 1 (Gas) and Zone 21 (Dust)
Beam Angles	30° x 30° or 60° x 60° or 90° x 90°	30° x 30° or 60° x 60° or 90° x 90°	30° x 30° or 60° x 60° or 90° x 90°	30° x 30° or 60° x 60° or 90° x 90°	30° x 30° or 60° x 60° or 90° x 90°
Input	110-277V 50/60Hz AC only	110-277V 50/60Hz AC only	110-277V 50/60Hz AC only	110-277V 50/60Hz AC only	110-277V 50/60Hz AC only
Beam Shape	Circular	Circular	Circular	Circular	Circular
Beam Angle System	Fixed	Fixed	Fixed	Fixed	Fixed
Consumption	85W	60W	65W	40W	45W
LED type	Platinum Elite SMT LEDs	Platinum Elite SMT LEDs	Platinum Elite SMT LEDs	Platinum Elite SMT LEDs	Platinum Elite SMT LEDs
Number of LEDS	48	24	24	24	24
Power output (luminous flux)	9,585 lm	7,132 lm	7,132 lm	4,792 lm	4,792 lm
Wavelength	White-Light	White-Light	White-Light	White-Light	White-Light
IP Rating	IP66 & IP67	IP66 & IP67	IP66 & IP67	IP66 & IP67	IP66 & IP67
Temperature Range	-20°C to +50°C (-4°F to +122°F)	-40°C to +60°C (-40°F to +140°F)	-20°C to +50°C (-4°F to +122°F)	-40°C to +60°C (-40°F to +140°F)	-20°C to +50°C (-4°F to +122°F)
Colour Temperature (White-Light)	5,700K	5,700K	5,700K	5,700K	5,700K
Colour	Silver (RAL 9006)	Silver (RAL 9006)	Silver (RAL 9006)	Silver (RAL 9006)	Silver (RAL 9006)
Weight	16kg (35.2lbs)	13.2kg (29.1lbs)	16kg (35.2lbs)	13.2kg (29.1lbs)	16kg (35.2lbs)
Dimensions	567 x 386 x 164mm (22.3 x 15.2 x 6.4")	447 x 386 x 164mm (17.6 x 15.2 x 6.4")	567 x 386 x 164mm (22.3 x 15.2 x 6.4")	447 x 386 x 164mm (17.6 x 15.2 x 6.4")	567 x 386 x 164mm (22.3 x 15.2 x 6.4")
Additional Features	Removable PSU Front access wiring system T4 Rating	Removable PSU Front access wiring system T4 Rating	Removable PSU Front access wiring system T4 Rating	Removable PSU Front access wiring system T4 Rating	Removable PSU Front access wiring system T4 Rating

Emergency Battery Back-up

Battery	NiMH 12V 6.0Ah		NiMH 12V 6.0Ah		NiMH 12V 6.0Ah
Duration	180 or 90 mins depending on variant Other options available		180 or 90 mins depending on variant Other options available		180 or 90 mins depending on variant Other options available
Charge Time	20 Hours		20 Hours		20 Hours
Additional Features					

Part Codes

Circular beam pattern	SPX-MPBY10K-W-3030-EMX / SPX-MPBY10W-6060-EMX / SPX-MPBY10K-W-9090-EMX	SPX-MPBY7K5-W-3030 / SPX-MPBY7K5-W-6060 / SPX-MPBY7K5-W-9090	SPX-MPBY7K5-W-3030-EMX / SPX-MPBY7K5-W-6060-EMX / SPX-MPBY7K5-W-9090-EMX	SPX-MPBY5K-W-3030 / SPX-MPBY5K-W-6060 / SPX-MPBY5K-W-9090	SPX-MPBY5K-W-3030-EMX / SPX-MPBY5K-W-6060-EMX / SPX-MPBY5K-W-9090-EMX
Elliptical beam pattern					

ZONE 2 & CID2



SPARTAN 
HIGH POWER BAY HPBY30K



SPARTAN 
HIGH POWER BAY HPBY25K



SPARTAN 
HIGH POWER BAY HPBY20K

Certification	ATEX, IEC Ex and UKEX rated for Zone 2 (Gas) and Zone 22 (Dust) CID2 and ABS	ATEX, IEC Ex and UKEX rated for Zone 2 (Gas) and Zone 22 (Dust) CID2 and ABS	ATEX, IEC Ex and UKEX rated for Zone 2 (Gas) and Zone 22 (Dust) CID2 and ABS
Beam Angles	30° x 30° / 60° x 60° / 90° x 90°	30° x 30° / 60° x 60° / 90° x 90°	30° x 30° / 60° x 60° / 90° x 90°
Input	150-264V 50/60Hz AC/DC CID2 variants - 120-277V AC/DC	150-264V 50/60Hz AC/DC CID2 variants - 120-277V AC/DC	150-264V 50/60Hz AC/DC CID2 variants - 120-277V AC/DC
Beam Shape	Circular	Circular	Circular
Beam Angle System	Fixed	Fixed	Fixed
Consumption	300W	300W	240W
LED type	Platinum Elite Multi-Core SMT LEDs	Platinum Elite Multi-Core SMT LEDs	Platinum Elite Multi-Core SMT LEDs
Number of LEDS	24	24	24
Power output (luminous flux)	34,456 lm	25,000 lm	20,000 lm
Wavelength	White-Light	White-Light	White-Light
IP Rating	IP66	IP66	IP66
Temperature Range	-50°C to +50°C (-58°F to +122°F)	-50°C to +50°C (-58°F to +122°F)	-50°C to +50°C (-58°F to +122°F)
Colour Temperature (White-Light)	5,700K	5,700K	5,700K
Colour	Front - Dark Grey (RAL 7012) Back - Silver (RAL 9006)	Front - Dark Grey (RAL 7012) Back - Silver (RAL 9006)	Front - Dark Grey (RAL 7012) Back - Silver (RAL 9006)
Weight	22.7kg (50lbs)	22.7kg (50lbs)	22.7kg (50lbs)
Dimensions	536 x 422 x 172mm (21.1 x 16.6 x 6.8")	536 x 422 x 172mm (21.1 x 16.6 x 6.8")	536 x 422 x 172mm (21.1 x 16.6 x 6.8")
Additional Features	CoolExtrude™ Thermal Management Removable PSU and LED modules DALI/Dimming as Standard Access wiring system T4 Rating	CoolExtrude™ Thermal Management Removable PSU and LED modules DALI/Dimming as Standard Access wiring system T4 Rating	CoolExtrude™ Thermal Management Removable PSU and LED modules DALI/Dimming as Standard Access wiring system T4 Rating

Part Codes

Circular beam pattern	SPZ-HPBY30K-W-3030 / SPZ-HPBY30K-W-6060 / SPZ-HPBY30K-W-9090	SPZ-HPBY25K-W-3030 / SPZ-HPBY25K-W-6060 / SPZ-HPBY25K-W-9090	SPZ-HPBY20K-W-3030 / SPZ-HPBY20K-W-6060 / SPZ-HPBY20K-W-9090
Elliptical beam pattern			



SPARTAN 
MID POWER BAY MPBY15K



SPARTAN 
MID POWER BAY
MPFL15K Emergency



SPARTAN 
MID POWER BAY MPBY12.5K



SPARTAN 
MID POWER BAY
MPFL12.5K Emergency



SPARTAN 
MID POWER BAY MPBY10K

Certification	ATEX, IEC Ex and UKEX rated for Zone 1 (Gas) and Zone 21 (Dust) ABS Approved	ATEX, IEC Ex and UKEX rated for Zone 1 (Gas) and Zone 21 (Dust)	ATEX, IEC Ex and UKEX rated for Zone 1 (Gas) and Zone 21 (Dust) ABS Approved	ATEX, IEC Ex and UKEX rated for Zone 1 (Gas) and Zone 21 (Dust)	ATEX, IEC Ex and UKEX rated for Zone 1 (Gas) and Zone 21 (Dust) ABS Approved
Beam Angles	30° x 30° or 60° x 60° or 90° x 90°	30° x 30° or 60° x 60° or 90° x 90°	30° x 30° or 60° x 60° or 90° x 90°	30° x 30° or 60° x 60° or 90° x 90°	30° x 30° or 60° x 60° or 90° x 90°
Input	110-277V 50/60Hz AC only	110-277V 50/60Hz AC only	110-277V 50/60Hz AC only	110-277V 50/60Hz AC only	110-277V 50/60Hz AC only
Beam Shape	Circular	Circular	Circular	Circular	Circular
Beam Angle System	Fixed	Fixed	Fixed	Fixed	Fixed
Consumption	120W	125W	100W	105W	80W
LED type	Platinum Elite SMT LEDs	Platinum Elite SMT LEDs	Platinum Elite SMT LEDs	Platinum Elite SMT LEDs	Platinum Elite SMT LEDs
Number of LEDS	48	48	48	48	48
Power output (luminous flux)	14,263 lm	14,263 lm	11,981 lm	11,981 lm	9,585 lm
Wavelength	White-Light	White-Light	White-Light	White-Light	White-Light
IP Rating	IP66 & IP67	IP66 & IP67	IP66 & IP67	IP66 & IP67	IP66 & IP67
Temperature Range	-40°C to +60°C (-40°F to +140°F)	-20°C to +50°C (-4°F to +122°F)	-40°C to +60°C (-40°F to +140°F)	-20°C to +50°C (-4°F to +122°F)	-40°C to +60°C (-40°F to +140°F)
Colour Temperature (White-Light)	5,700K	5,700K	5,700K	5,700K	5,700K
Colour	Silver (RAL 9006)	Silver (RAL 9006)	Silver (RAL 9006)	Silver (RAL 9006)	Silver (RAL 9006)
Weight	13.2kg (29.1lbs)	16kg (35.2lbs)	13.2kg (29.1lbs)	16kg (35.2lbs)	13.2kg (29.1lbs)
Dimensions	447 x 386 x 164mm (17.6 x 15.2 x 6.4")	567 x 386 x 164mm (22.3 x 15.2 x 6.4")	447 x 386 x 164mm (17.6 x 15.2 x 6.4")	567 x 386 x 164mm (22.3 x 15.2 x 6.4")	447 x 386 x 164mm (17.6 x 15.2 x 6.4")
Additional Features	Removable PSU Front access wiring system T4 Rating	Removable PSU Front access wiring system T4 Rating	Removable PSU Front access wiring system T4 Rating	Removable PSU Front access wiring system T4 Rating	Removable PSU Front access wiring system T4 Rating

Emergency Battery Back-up

Battery		NiMH 12V 6.0Ah		NiMH 12V 6.0Ah	
Duration		180 or 90 mins depending on variant Other options available		180 or 90 mins depending on variant Other options available	
Charge Time		20 Hours		20 Hours	
Additional Features					

Part Codes

Circular beam pattern	SPX-MPBY15K-W-3030 / SPX-MPBY15K-W-6060 / SPX-MPBY15K-W-9090	SPX-MPBY15K-W-3030-EMX / SPX-MPBY15K-W-6060-EMX / SPX-MPBY15K-W-9090-EMX	SPX-MPBY12K5-W-3030 / SPX-MPBY12K5-W-6060 / SPX-MPBY12K5-W-9090	SPX-MPBY12K5-W-3030-EMX / SPX-MPBY12K5-W-6060-EMX / SPX-MPBY12K5-W-9090-EMX	SPX-MPBY10K-W-3030 / SPX-MPBY10W-6060 / SPX-MPBY10K-W-9090
Elliptical beam pattern					

ZONE 2 & CID2



SPARTAN 
MID POWER BAY
MPFL10K Emergency



SPARTAN 
MID POWER BAY MPBY7.5K



SPARTAN 
MID POWER BAY
MPFL7.5K Emergency



SPARTAN 
MID POWER BAY MPBY5K



SPARTAN 
MID POWER BAY
MPFL5K Emergency

Certification	ATEX, IEC Ex and UKEX rated for Zone 1 (Gas) and Zone 21 (Dust)	ATEX, IEC Ex and UKEX rated for Zone 1 (Gas) and Zone 21 (Dust) ABS Approved	ATEX, IEC Ex and UKEX rated for Zone 1 (Gas) and Zone 21 (Dust)	ATEX, IEC Ex and UKEX rated for Zone 1 (Gas) and Zone 21 (Dust) ABS Approved	ATEX, IEC Ex and UKEX rated for Zone 1 (Gas) and Zone 21 (Dust)
Beam Angles	30° x 30° or 60° x 60° or 90° x 90°	30° x 30° or 60° x 60° or 90° x 90°	30° x 30° or 60° x 60° or 90° x 90°	30° x 30° or 60° x 60° or 90° x 90°	30° x 30° or 60° x 60° or 90° x 90°
Input	110-277V 50/60Hz AC only	110-277V 50/60Hz AC only	110-277V 50/60Hz AC only	110-277V 50/60Hz AC only	110-277V 50/60Hz AC only
Beam Shape	Circular	Circular	Circular	Circular	Circular
Beam Angle System	Fixed	Fixed	Fixed	Fixed	Fixed
Consumption	85W	60W	65W	40W	45W
LED type	Platinum Elite SMT LEDs	Platinum Elite SMT LEDs	Platinum Elite SMT LEDs	Platinum Elite SMT LEDs	Platinum Elite SMT LEDs
Number of LEDS	48	24	24	24	24
Power output (luminous flux)	9,585 lm	7,132 lm	7,132 lm	4,792 lm	4,792 lm
Wavelength	White-Light	White-Light	White-Light	White-Light	White-Light
IP Rating	IP66 & IP67	IP66 & IP67	IP66 & IP67	IP66 & IP67	IP66 & IP67
Temperature Range	-20°C to +50°C (-4°F to +122°F)	-40°C to +60°C (-40°F to +140°F)	-20°C to +50°C (-4°F to +122°F)	-40°C to +60°C (-40°F to +140°F)	-20°C to +50°C (-4°F to +122°F)
Colour Temperature (White-Light)	5,700K	5,700K	5,700K	5,700K	5,700K
Colour	Silver (RAL 9006)	Silver (RAL 9006)	Silver (RAL 9006)	Silver (RAL 9006)	Silver (RAL 9006)
Weight	16kg (35.2lbs)	13.2kg (29.1lbs)	16kg (35.2lbs)	13.2kg (29.1lbs)	16kg (35.2lbs)
Dimensions	567 x 386 x 164mm (22.3 x 15.2 x 6.4")	447 x 386 x 164mm (17.6 x 15.2 x 6.4")	567 x 386 x 164mm (22.3 x 15.2 x 6.4")	447 x 386 x 164mm (17.6 x 15.2 x 6.4")	567 x 386 x 164mm (22.3 x 15.2 x 6.4")
Additional Features	Removable PSU Front access wiring system T4 Rating	Removable PSU Front access wiring system T4 Rating	Removable PSU Front access wiring system T4 Rating	Removable PSU Front access wiring system T4 Rating	Removable PSU Front access wiring system T4 Rating

Emergency Battery Back-up

Battery	NiMH 12V 6.0Ah		NiMH 12V 6.0Ah		NiMH 12V 6.0Ah
Duration	180 or 90 mins depending on variant Other options available		180 or 90 mins depending on variant Other options available		180 or 90 mins depending on variant Other options available
Charge Time	20 Hours		20 Hours		20 Hours
Additional Features					

Part Codes

Circular beam pattern	SPX-MPBY10K-W-3030-EMX / SPX-MPB10W-6060-EMX / SPX-MPBY10K-W-9090-EMX	SPX-MPBY7K5-W-3030 / SPX-MPBY7K5-W-6060 / SPX-MPBY7K5-W-9090	SPX-MPBY7K5-W-3030-EMX / SPX-MPBY7K5-W-6060-EMX / SPX-MPBY7K5-W-9090-EMX	SPX-MPBY5K-W-3030 / SPX-MPBY5K-W-6060 / SPX-MPBY5K-W-9090	SPX-MPBY5K-W-3030-EMX / SPX-MPBY5K-W-6060-EMX / SPX-MPBY5K-W-9090-EMX
Elliptical beam pattern					



Sand Blast Shield Kit

Flood/Bulkhead



Ceiling Mount Kit

Linear



Suspension Cord Kit

Flood/Linear/Bulkhead



Swivel Bracket Mounting Kit

Linear/Bulkhead



Pole Clamp Kit

Linear



M8 Eye Bolt Kit

Flood/Linear



Magnetic Mounting Kit

Linear



Front Guard

Flood/Bulkhead/High Power Flood



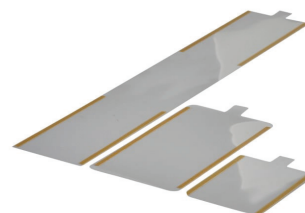
Diffused
Polycarbonate Lens

Linear



Emergency Exit Sign

Bulkhead



Protective Film

Flood/Linear/Bulkhead



Pole Mounting Kit

Flood



Wildlife Friendly



Safety Shower



Red Light



Infra-Red



Heavy Industrial



Loop in Loop Out



Spigot Mount



URBAN-X Range



High Output Variants

Lighting Design Service

Our lighting design service won the Hazardex award for 'Best Customer Service'. Our team of experts can design a lighting scheme tailored to your individual requirements.

This service offers –

- 2D Lighting Design
- 3D Lighting Design

Offering a detailed or full 3D visual representation of the site, our lighting design service will provide recommendations on the product type and number of lights required, as well as the average, maximum and minimum light levels that can be achieved.

Energy and Cost Saving Report

Provides a customer specific survey to summarise energy, CO2 savings and ROI. Cost savings can be shown over 1, 5 and 10 years.

Special Operations Division

Our specialist team can offer custom-built product design tailored for bespoke projects and challenging applications. Give us a call!

Disclaimer

The information provided in this document was accurate at the time of its creation. However, due to the evolving nature of our products and continuous improvements, there may be changes or updates that occur after its publication.

For the most current and detailed information about our products, please contact our sales team at sales@raytecled.com.





Hazardous Area LED Lighting with Worldwide Certification

Global HQ

T: +44 (0) 1670 520055
sales@raytecled.com

Americas

T: +1 613 270 9990
ussales@raytecled.com

www.raytecled.com