

Armstrong Circular Saw Stretcher Rolls



The circle saw stretcher roll's ability to tension and level saws with great speed and efficiency is a major advantage in busy filing rooms.

Armstrong stretcher rolls uniformly tension saws as much as 10 to 20 times faster than is possible with a hammer and anvil, and with far less effort. These machines are simple to operate, heavy duty in design and perform well on even the heaviest gauge saws.

In addition to the speed, Armstrong stretcher rolls provide greater uniformity and control over the tensioning process. Both the 3-10-C and 3-60-C gently roll the same tension all around the saw.

Eccentric Mandrel:

The eccentric mandrel on the stretcher roll can be adjusted so that the crown travels in concentric rings on the saw or in a spiral. When placed perpendicular to the radius of the saw, the rings will be concentric. Moving the eccentric mandrel slightly off-center will create a spiraling of the crown on the saw.



Two Models Available:

Depending on your requirements, Armstrong offers two stretcher roll models. The 3-10-C accommodates saws up to 36" in diameter. When tensioning a 36" saw, the 3-10-C rolls to within 7" of the center of the saw. On smaller saws, operators are able to tension even closer to the eye.

For saws up to 75" in diameter, the 3-60-C is ideal. This larger model tensions saws to within 9-1/2" of the center of a 75" saw or in even closer on smaller saws.

Both models come complete with a 1 HP motor for standard alternating current, magnetic switch, convenient foot pedal and a standard four-step centering bushing.

Armstrong

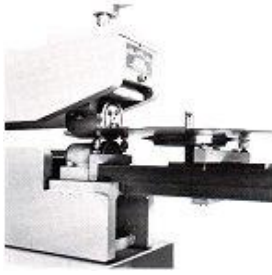
MANUFACTURING COMPANY

2135 NW 21st Ave. Portland, OR 97209 USA

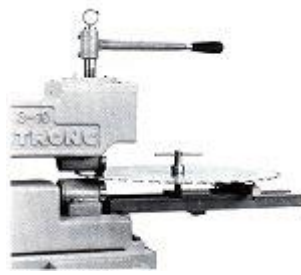
(503) 228-8381 Fax: (503) 228-8384

www.armstrongblue.com

Armstrong Circular Saw Stretcher Rolls



No. 3-60-C shown with optional leveler attachment (part no. 6806)



No. 3-10-C with optional dial indicating pressure screw in place of standard screw.

3-10-C and 3-60-C Features

SPEED:

Filers can perform the task of tensioning saws much quicker than by hammering - as much as 10 to 20 times faster.

UNIFORMITY:

Stretcher rolls tension saws smoothly and uniformly from the center of the saw to the gullet line.

HAMMER MARKS ELIMINATED:

Eliminating hammer marks helps to ensure top performance from even thin kerf saws, such as those used on modern guided multi-saw rip machines.

HEAVY-DUTY BUILD:

The sturdy cast-iron or steel frame, steel floor stand and heavy-duty anti-friction bearings assure years of trouble-free service. A 1 HP motor provides power to tension even the heaviest gauge saw.

CONVENIENCE:

The foot pedal control starts and stops the rolls. The saw quickly adjusts in and out on steel rails for precise positioning of the rolls.

Options and Accessories

STEPPED SAW CENTERING BUSHING:

Each machine comes with a stepped bushing to handle saws with center holes of 1", 1-1/8", 1-1/4", 1-3/8". Single step bushings for larger eyes are available at extra cost. A special mandrel is also available for saw bores down to 1/2".

DIAL INDICATING PRESSURE SCREW:

Completely interchangeable with the standard screw, the optional dial indicating pressure screw shows the amount of pressure being applied to the saw directly on the dial. This option is very useful in maintaining and repeating the correct pressure and in training new filers.

LEVELING ATTACHMENT:

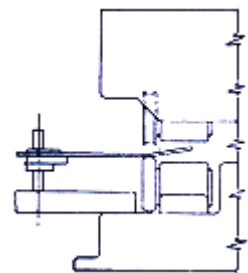
The hardened and crowned rollers are set to the desired height and the tensioning rolls pull the saw through without adding tension. The optional attachment is quickly installed and removed and is used for both standard circle and Strob saws.

STRETCHER ROLLS:

The standard tensioning rolls included with each machine are ground to a 4" crown. This crown works very well on a wide range of circle saws.

LEVELING ROLLS:

A concave leveling roll is available. Armstrong's part number 7337 is a fully concave roll, is ideal for all saws.



Stretcher roll with concave levelling roll (part no. 7337) for all saws.

Armstrong

MANUFACTURING COMPANY

2135 NW 21st Ave. Portland, OR 97209 USA

(503) 228-8381 Fax: (503) 228-8384

www.armstrongblue.com

Armstrong Circular Saw Stretcher Rolls

Specifications:

	<u>3-10-C</u>	<u>3-60-C</u>
CAPACITY:	36" diameter saws, tensioning to within 7" of saw center (92 cm saws, tensioning to within 18cm of saw center)	75" diameter saws, tensioning to within 9-1/2" of saw center (190 cm saws, tensioning to within 25 cm of saw center)
MAX. GAUGE:	4 gauge (.238" or 6.04cm)*	4 gauge (.238" or 6.04cm)*
STANDARD FEED:	40 feet/minute (12 meters/minute)	40 feet/minute (12 meters/minute)
MOTOR:	1 HP gearhead (.75 kilowatts)	1 HP gearhead (.75 kilowatts)
HEIGHT OVERALL:	58" (147.3 cm)	54" (137.2 cm)
FLOOR SPACE:	21" X 41" (53.3 cm X 104.1 cm)	24" X 79-1/2" (61 cm X 202 cm)
WEIGHT, TRUCK CRATE:	700 lbs. (320 kg)	1300 lbs. (600 kg)
WEIGHT, OCEAN CRATE:	800 lbs. (370 kg)	1400 lbs. (650 kg)
CUBIC FEET:	53 cu. ft. (1.5 cu. meters)	72 cu. ft. (2 cu. meters)
<p>* With standard 4" radius crown. Even heavier plates, sometimes up to 5/8" (16 mm) may be rolled effectively in certain circumstances with rolls ground to a sharper crown. Please provide the Armstrong factory with details of your saws for a recommendation.</p>		



Armstrong

MANUFACTURING COMPANY
 2135 NW 21st Ave. Portland, OR 97209 USA
 (503) 228-8381 Fax: (503) 228-8384
www.armstrongblue.com

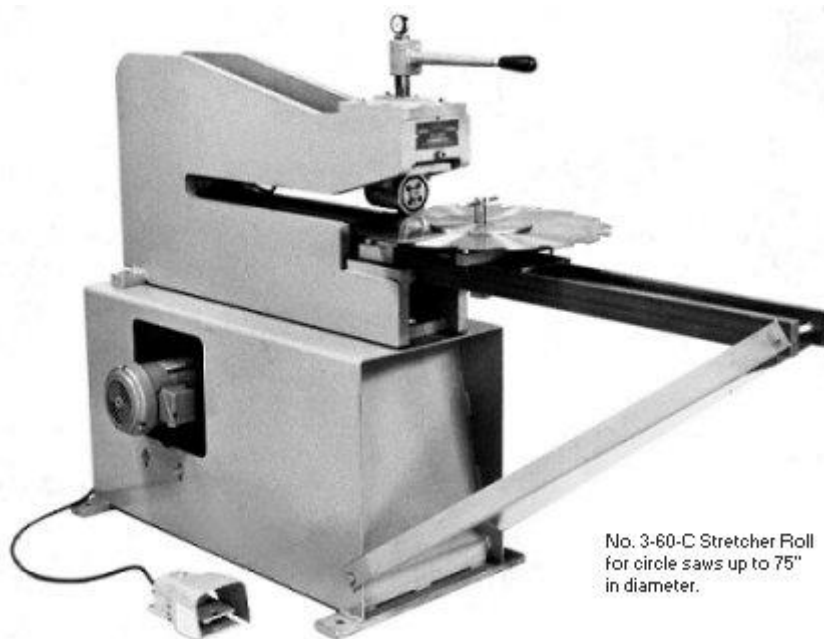
ORDERING INFORMATION:

Prices for circular saw stretcher rolls include gearmotor and starter for standard alternating current, foot switch with low voltage control, eccentric mandrel, steel floor base and one 4-step bushing for saw eyes 1", 1-1/8", 1-1/4", and 1-3/8".

<u>PART NUMBER</u>	<u>DESCRIPTION</u>
6929	Single step bushings for large saw eyes
6806	Leveler attachment
7337	Concave leveling roll
6934	Tensioning rolls 94" radius, standard)



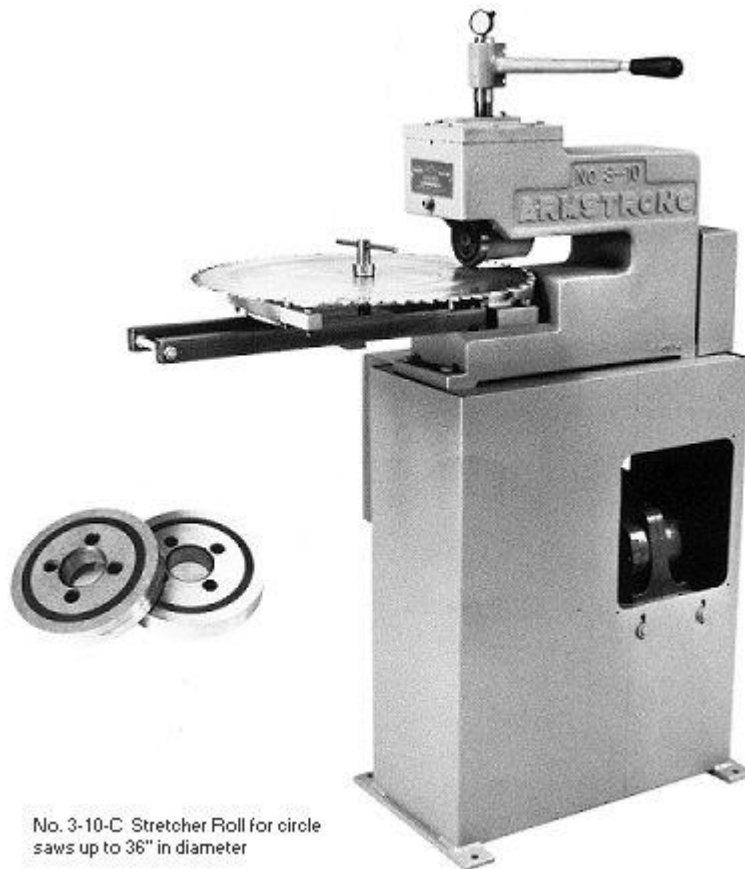
[Click here to print datasheet](#)



No. 3-60-C Stretcher Roll
for circle saws up to 75"
in diameter.

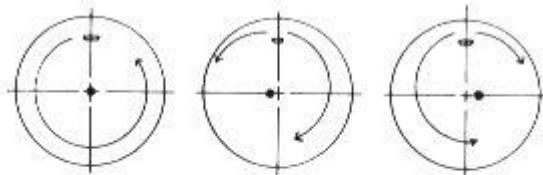
The circle saw stretcher roll's ability to tension and level saws with great speed and efficiency is a major advantage in busy filing rooms. Armstrong stretcher rolls uniformly tension saws as much as 10 to 20 times faster than is possible with a hammer and anvil, and with far less effort. These machines are simple to operate, heavy duty in design and perform well on even the heaviest gauge saws.

In addition to the speed, Armstrong stretcher rolls provide greater uniformity and control over the tensioning process. Both the 3-10-C and 3-60-C gently roll the same tension all around the saw.



Eccentric Mandrel:

The eccentric mandrel on the stretcher roll can be adjusted so that the crown travels in concentric rings on the saw or in a spiral. When placed perpendicular to the radius of the saw, the rings will be concentric. Moving the eccentric mandrel slightly off-center will create a spiraling of the crown on the saw.



With the eccentric mandrel centered (Left drawing), the crown "tracks" in concentric circles on the saw. The eccentric mandrel can be adjusted to shift the center of the saw to the left or right, causing the crown to "track" in a spiral depending on the direction the center is shifted to.

Two Models Available:

Depending on your requirements, Armstrong offers two stretcher roll models. the 3-10-C accommodates saws up to 36" in

diameter. When tensioning a 36" saw, the 3-10-C rolls to within 7" of the center of the saw. On smaller saws, operators are able to tension even closer to the eye.

For saws up to 75" in diameter, the 3-60-C is ideal. This larger model tensions saws to within 9-1/2" of the center of a 75" saw or in even closer on smaller saws.

Both models come complete with a 1 HP motor for standard alternating current, magnetic switch, convenient foot pedal and a standard four-step centering bushing.

3-10-C and 3-60-C Features

SPEED:

Filers can perform the task of tensioning saws much quicker than by hammering - as much as 10 to 20 times faster.

UNIFORMITY:

Stretcher rolls tension saws smoothly and uniformly from the center of the saw to the gullet line.

HAMMER MARKS ELIMINATED:

Eliminating hammer marks helps to ensure top performance from even thin kerf saws, such as those used on modern guided multi-saw rip machines.

HEAVY-DUTY BUILD:

The sturdy cast-iron or steel frame, steel floor stand and heavy-duty anti-friction bearings assure years of trouble-free service. A 1 HP motor provides power to tension even the heaviest gauge saw.

CONVENIENCE:

The foot pedal control starts and stops the rolls. The saw quickly adjusts in and out on steel rails for precise positioning of the rolls.

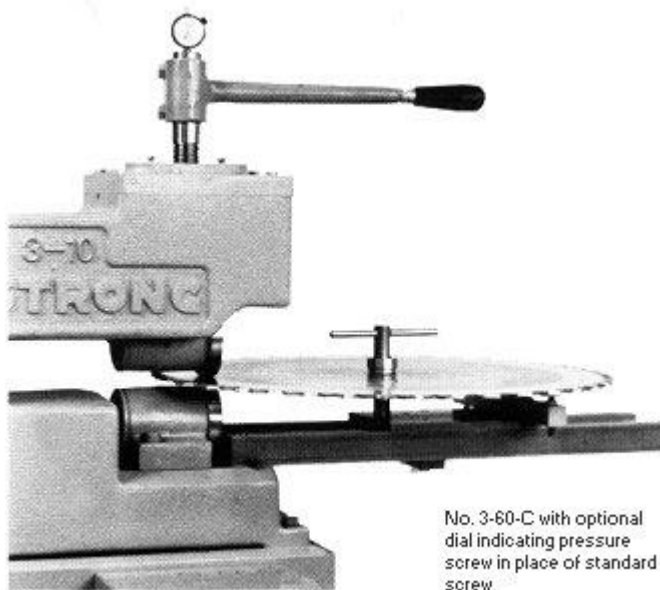
Options and Accessories

STEPPED SAW CENTERING BUSHING:

Each machine comes with a stepped bushing to handle saws with center holes of 1", 1-1/8", 1-1/4", 1-3/8". Single step bushings for larger eyes are available at extra cost. A special mandrel is also available for saw bores down to 1/2".

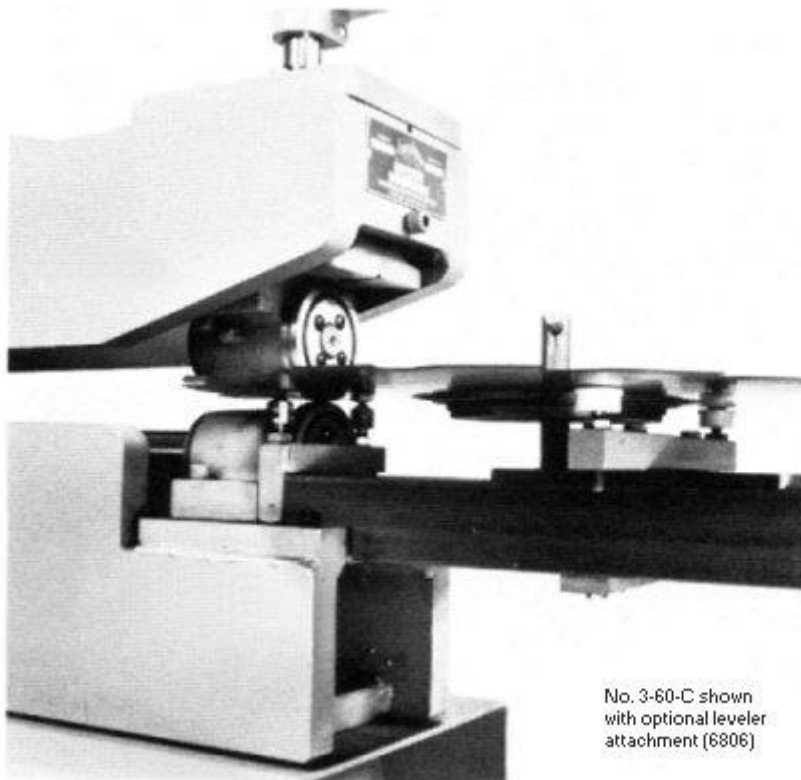
DIAL INDICATING PRESSURE SCREW:

Completely interchangeable with the standard screw, the optional dial indicating pressure screw shows the amount of pressure being applied to the saw directly on the dial. This option is very useful in maintaining and repeating the correct pressure and in training new filers.



LEVELING ATTACHMENT:

The hardened and crowned rollers are set to the desired height and the tensioning rolls pull the saw through without adding tension. The optional attachment is quickly installed and removed and is used for both standard circle and Strob saws.



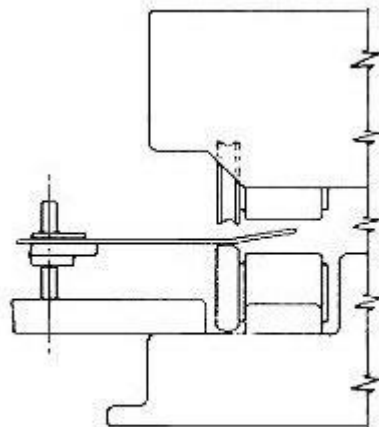
No. 3-60-C shown
with optional leveler
attachment (6806)

STRETCHER ROLLS:

The standard tensioning rolls included with each machine are ground to a 4" crown. This crown works very well on a wide range of circle saws.

LEVELING ROLLS:

A concave leveling roll is available. Armstrong's part number 7337 is a fully concave roll, ideal for all saws.



Stretcher Roll with concave leveling roll (7337)
for all saws.

SPECIFICATIONS:

	<u>3-10-C</u>	<u>3-60-C</u>
CAPACITY:	36" diameter saws, tensioning to within 7" of saw center (92 cm saws, tensioning to within 18cm of saw center)	75" diameter saws, tensioning to within 9-1/2" of saw center (190 cm saws, tensioning to within 25 cm of saw center)
MAX. GAUGE:	4 gauge (.238" or 6.04cm)*	4 gauge (.238" or 6.04cm)*
STANDARD FEED:	40 feet/minute (12 meters/minute)	40 feet/minute (12 meters/minute)
MOTOR:	1 HP gearhead (.75 kilowatts)	1 HP gearhead (.75 kilowatts)
HEIGHT OVERALL:	58" (147.3 cm)	54" (137.2 cm)
FLOOR SPACE:	21" X 41" (53.3 cm X 104.1 cm)	24" X 79-1/2" (61 cm X 202 cm)
WEIGHT, TRUCK CRATE:	700 lbs. (320 kg)	1300 lbs. (600 kg)
WEIGHT, OCEAN CRATE:	800 lbs. (370 kg)	1400 lbs. (650 kg)
CUBIC FEET:	53 cu. ft. (1.5 cu. meters)	72 cu. ft. (2 cu. meters)

* With standard 4" radius crown. Even heavier plates, sometimes up to 5/8" (16 mm) may be rolled effectively in certain circumstances with rolls ground to a sharper crown. Please provide the Armstrong factory with details of your saws for a recommendation.

ORDERING INFORMATION:

Prices for circular saw stretcher rolls include gearmotor and starter for standard alternating current, foot switch with low voltage control, eccentric mandrel, steel floor base and one 4-step bushing for saw eyes 1", 1-1/8", 1-1/4", and 1-3/8".

<u>PART NUMBER</u>	<u>DESCRIPTION</u>
6929	Single step bushings for large saw eyes

6806	Leveler attachment
7337	Leveling roll concave
6934	Tensioning rolls (4" radius, standard)
8042	Dial indication pressure screw

Copyright(c) 1998-02, Armstrong Mfg. Co., All Rights Reserved

2700 SE Tacoma St., Portland OR 97202

voice: 800-426-6226 fax: 800-513-2529

e-mail: info@armstrongblue.com

[new products](#) | [publications](#) | [equipment](#)
[sales](#) | [training & events](#) | [contact us](#) | [home](#)