

| Materials Handling Equipment For Long Loads

CAVAION SIDeloadERS
BAUMANN 

the art of working sideways

EXL SERIES

5 TONNES CAPACITY
120V Heavy Duty Electric

Efficient, intelligent & tough
Spacious large cabin
Load-sensing
Highly manoeuvrable
Amazing work-cycles



X-PLUS
SERIES
Upgrades now as standard

www.baumann-sideloaders.com

Introducing The EXL Series: Customer-driven design

The Baumann EXL50 represents a leap forward in electric sideloader design, offering a highly compact, energy-efficient, and ergonomically advanced solution for handling long or bulky loads in tight spaces.

Engineered in response to growing operational demands for sustainability, driver comfort, and fleet flexibility, the EXL50 builds upon the proven platform of Baumann 120-volt electrics, of which over 1,000 units have been sold globally.



Maximum productivity



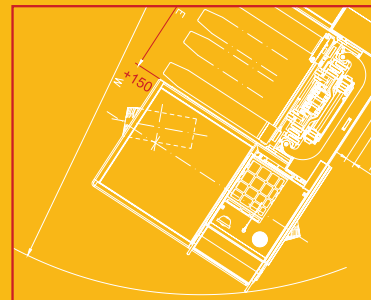
Over 8 hours continuous run time, panoramic cabin, load sensing, joystick control, full road-legal LED lighting and precise mast control makes this durable machine one of the most productive and energy-efficient ever made.

Spacious Cabin



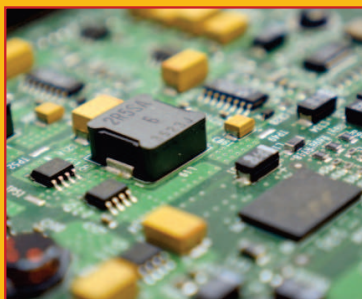
A completely re-engineered operator cabin is at the heart of the EXL, designed to transform comfort and usability. 20% larger than the ELX model, with an 800mm width, 200mm added in length, and a 100mm increase in height, it allows a larger ergonomic seat, increased legroom and arm movement, and an entirely new dashboard layout for optimal control and visibility.

Extra reach capability



The reach capability (X-dimension) has been improved to 150mm, without changes to the truck dimensions. The added outreach provides operational benefits, with improved flexibility for loading and unloading, and use of a 1,200mm deck in circumstances that would otherwise require 1,400mm – improving storage capability.

Intelligent electronics



The huge saving in weight allows a larger, intelligent battery system, created specifically for Baumann in a bespoke arrangement. This in turn is supplemented by a new AC wiring schematic, featuring individual cables directly connected to each component to provide maximum efficiency.

Compact turning circle



The reduced length and improved turning circle have been achieved without sacrificing the mast or well width, clearance and low bed height.

Innovative hydraulics



The EXL utilises a bespoke steering axle and flow matching hydraulic system. Through closed-loop control, the hydraulic pressure is adjusted depending on the load, saving energy and improving efficiency.

A safe and comfortable space to work

Joystick movement and visibility have been improved by rethinking the EXL dashboard geometry and control spacing.

This superb new cabin, borrowed from Baumann's heavy-duty range, is now standard on the EXL50, making high-spec comfort available even in compact logistics applications.

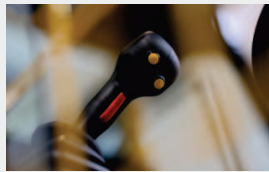
Improved Access and Visibility

Operator safety and ease of use are central to the EXL50's design. Key enhancements include the wider and deeper entry steps for easier cab access, plus raised cab ceiling to accommodate modern lighting, mirrors, or camera systems.

The larger glass areas improve visibility, particularly to the rear, whilst the sliding window on the door, previously an optional feature on larger trucks, is now standard, ensuring ventilation and compliance with closed-door operation rules.

Built for Operator Safety

Safety is integrated through multiple enhancements. The all-wheel braking system has been added as standard for improved performance. Improved mast visibility and outreach help drivers avoid misalignment and reduce damage during loading and unloading. An upgraded dashboard layout also improves user interaction while minimising distraction.



Flexible handling options

Amongst the most popular attachments are spreader beams and extended carriages.

For very long loads a fixed spreader beam (attached to a standard carriage) sits outside the chassis with an additional fork at either end. Extended carriages allow the forks to travel along the full length of the truck, adding the ability to close the forks together.

It's therefore possible to carry different lengths, such as a load positioned above the deck, or even a pallet in the sideloader well. If the centres of gravity of your loads vary, or movement is restricted, fork positioners allow you to move the forks relative to the truck (but always a fixed distance from one another) via hydraulic rams mounted in the carriage.

When a load is stored on a slope or cannot be raised with level forks a hydraulic lifting and lowering fork raises one fork a few inches. If both forks require independent movement, vertically moveable forks can provide lift independent of the mast.



- Increased outreach distance
- Improved productivity
- Same great residual capacities
- Same load centres
- Improved load safety
- Road legal LED lights as standard

Tilting the deck, mast or forks

Tilting a mast back to secure the load is common practice on forklifts, but on a Baumann sideloader the mast is fixed and the whole truck tilts sideways. The whole of the machine can be tilted horizontally, to improve load picking and security. Occasionally, a tilting carriage can be added to the mast to provide an additional 5 degrees (plus or minus) of tilt.



Award-winning innovation: Decades of manufacturing experience and expertise has enabled us to improve, innovate and push sideloaders design forward.

The blending of innovation, productivity and durability.

Baumann machines can cope with almost anything you can throw at them.

Our chassis are built to exacting standards, while our masts have a unique profile designed for the specific demands of working sideways.

Toughness is just one of the secrets to our success, helping our equipment to be known worldwide for its durability and reliability.

Baumann is also renowned as an innovator, especially in the important areas of safety and productivity.

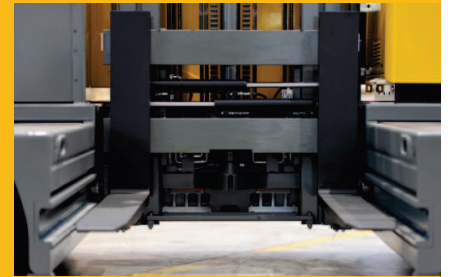
Our Variable Reach System (VRS) with Archimedes Outreach is the most advanced development in sideloaders design in over 50 years.

We have been nominated five times in the Fork Lift Truck Association's Excellence Awards, winning for both Environment and Innovation, and are the only sideloaders manufacturer to receive the prestigious Watt d'Or from the Swiss Federal Office of Energy.

With a strong reputation for our ability to customise standard models around specific needs, we are a reliable and professional partner, particularly in technical support and after-sales.

Our panoramic operator cabs offer the very latest technology, efficient use of space and high levels of ergonomics.

It all adds up to an enviable package blending the perfect levels of innovation, productivity and durability.



BAUMANN S.r.l.
I-37010 CAVAION (Verona)
Via Palesega, 1
Telephone +39 045 6 20 53 11
info@baumann-sideloaders.com

CAVAION SIDELOADERS
BAUMANN



www.baumann-sideloaders.com



All contents © Baumann S.r.l. 2023. Baumann constantly develops and improves on its products. Some instructions, diagrams or photographs shown may therefore differ in form, although not in substance, from the product sold.