

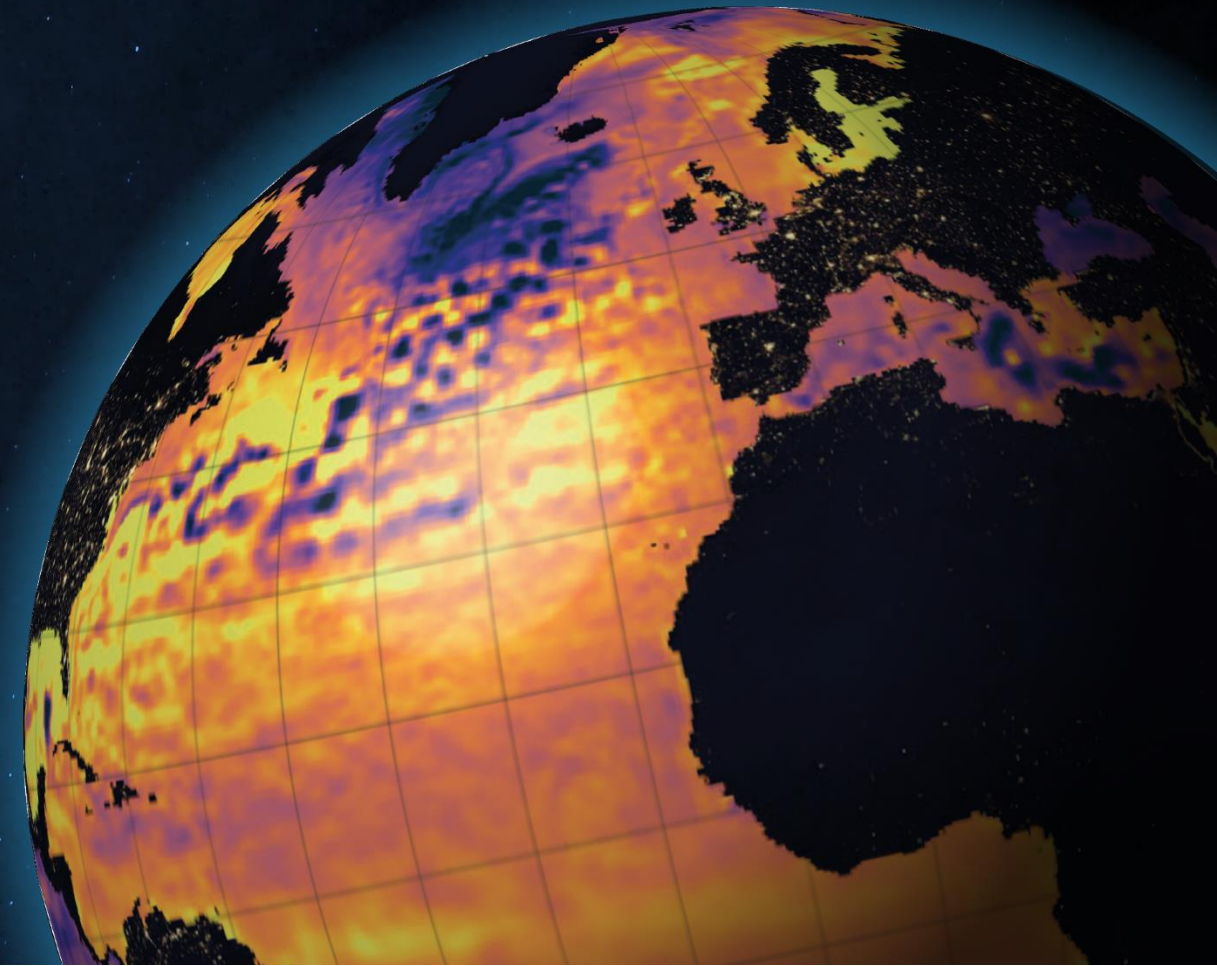
A relocatable approach to regional ocean forecast systems: Applications along South Africa's continental shelf

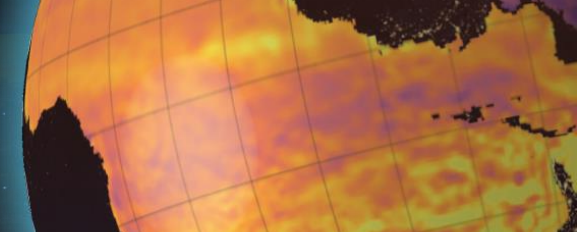
Giles Fearon¹, Jennifer Veitch^{1,2}, Zach Smith³,
Nkululeko Memela¹, Gustav Rautenbach¹

¹ Egagasini Node, South African Environmental Observation Network (SAEON), Cape Town, South Africa.

² Nansen-Tutu Centre, Marine Research Institute, University of Cape Town, Department of Oceanography, Cape Town, South Africa.

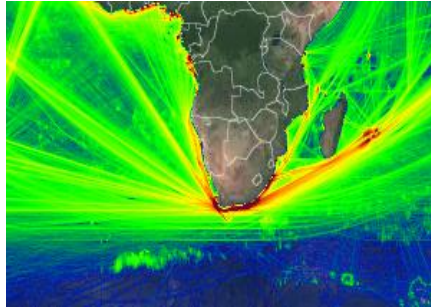
³ South African Radio Astronomy Observatory (SARAO).





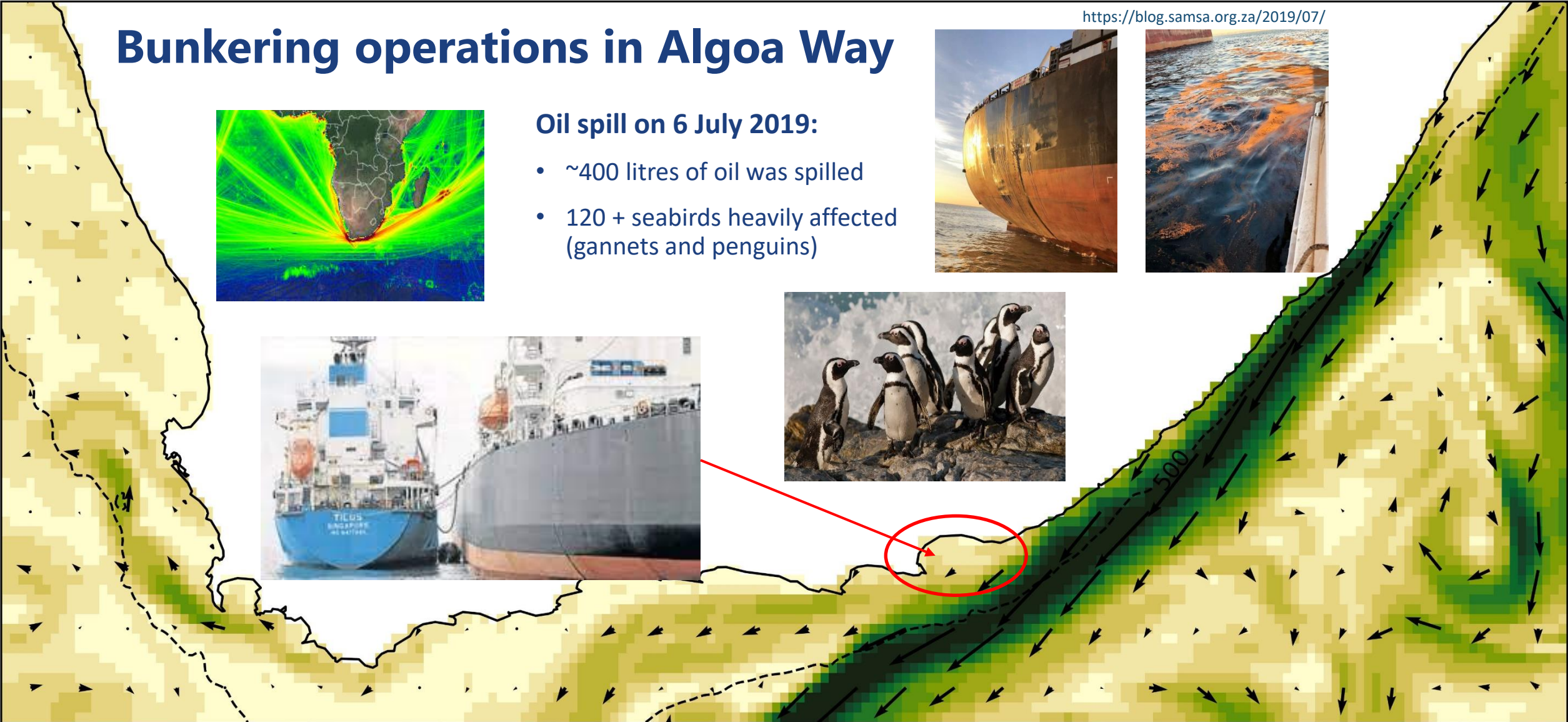
Bunkering operations in Algoa Bay

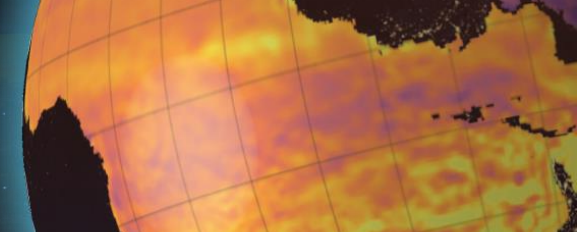
<https://blog.samsa.org.za/2019/07/>



Oil spill on 6 July 2019:

- ~400 litres of oil was spilled
- 120 + seabirds heavily affected (gannets and penguins)





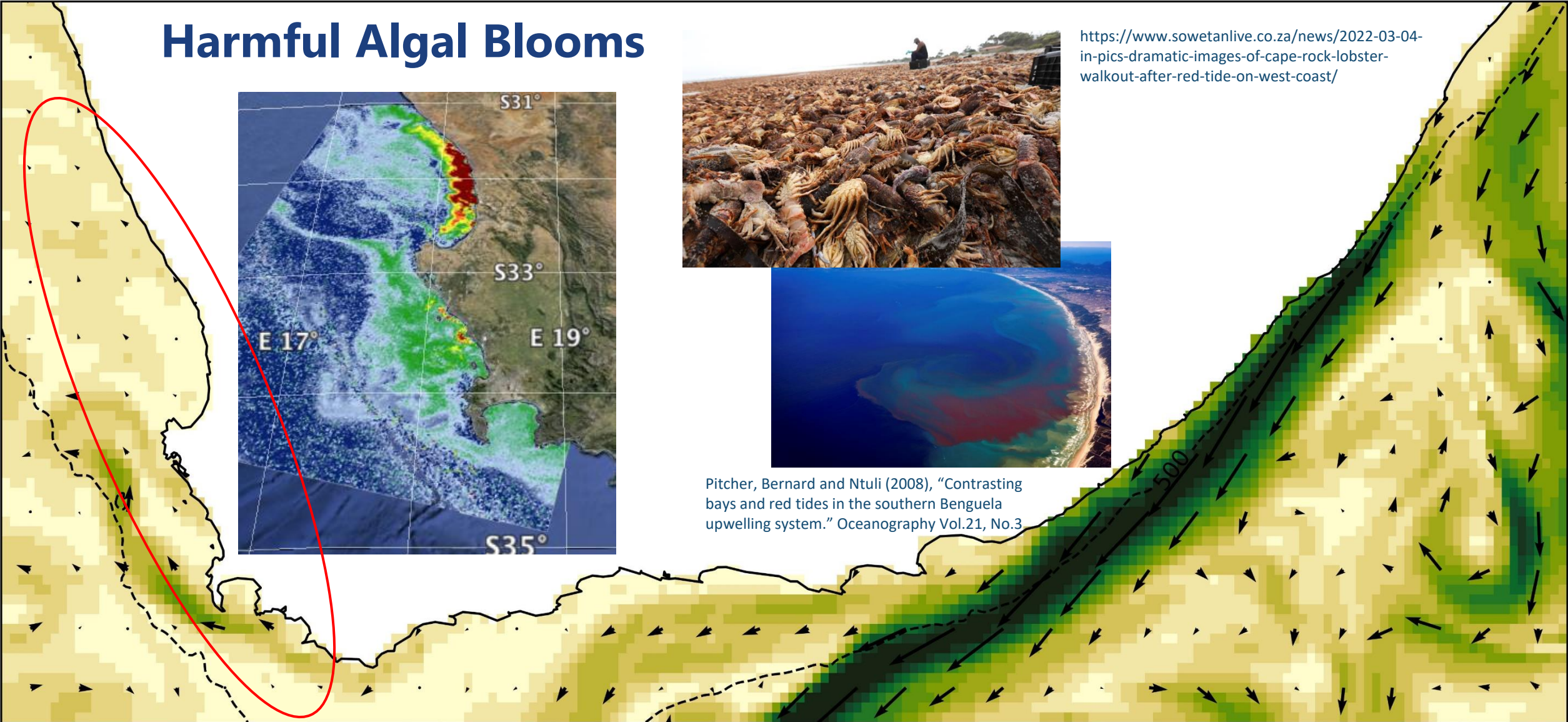
Harmful Algal Blooms



<https://www.sowetanlive.co.za/news/2022-03-04-in-pics-dramatic-images-of-cape-rock-lobster-walkout-after-red-tide-on-west-coast/>

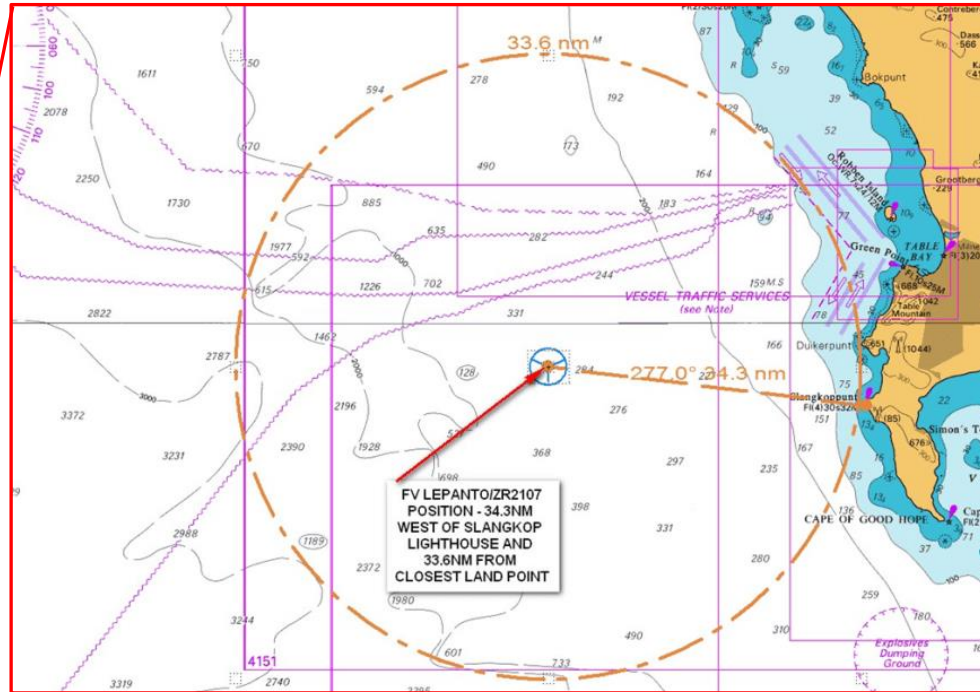


Pitcher, Bernard and Ntuli (2008), "Contrasting bays and red tides in the southern Benguela upwelling system." *Oceanography* Vol.21, No.3

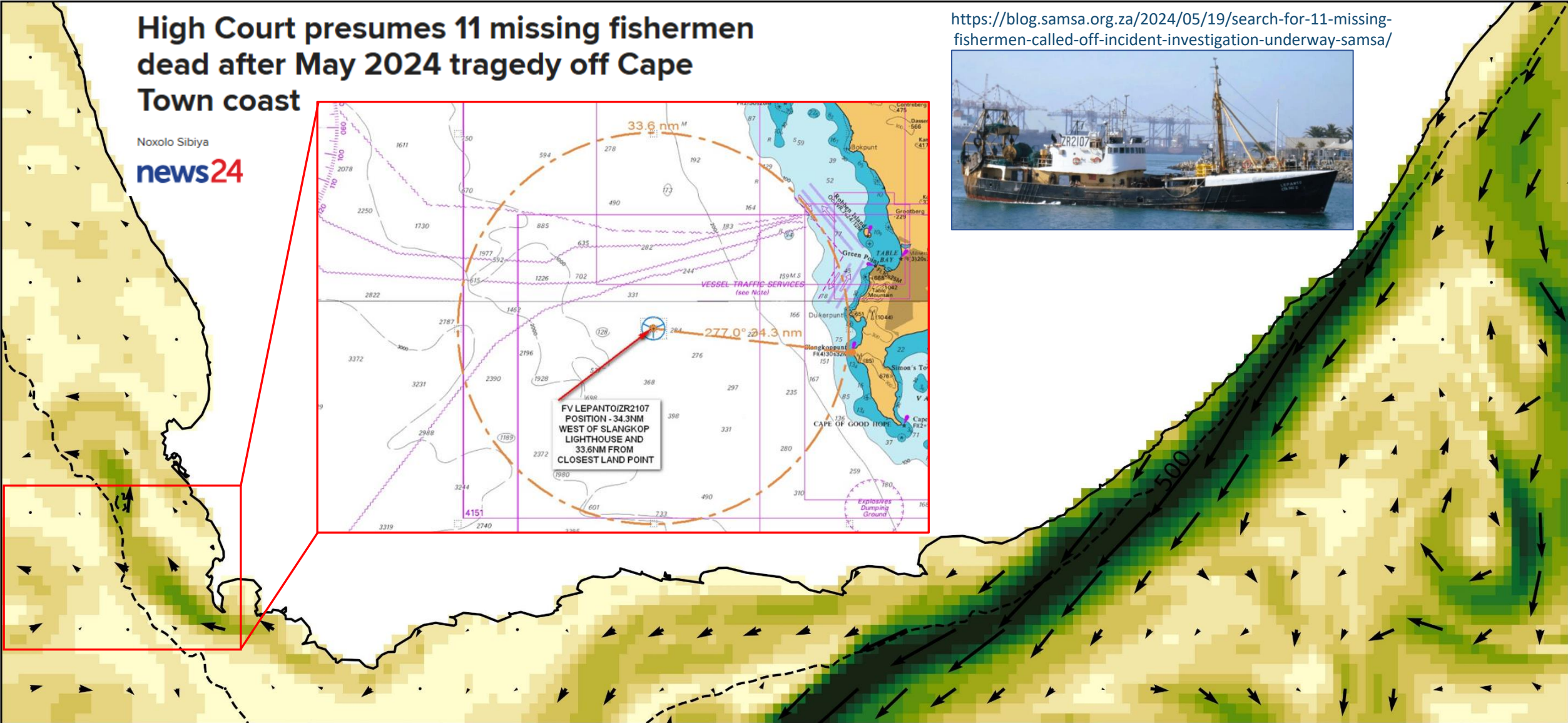


High Court presumes 11 missing fishermen dead after May 2024 tragedy off Cape Town coast

Noxolo Sibiya
news24



<https://blog.samsa.org.za/2024/05/19/search-for-11-missing-fishermen-called-off-incident-investigation-underway-samsa/>



High Court presumes 11 missing fishermen dead after May 2024 tragedy off Cape Town coast

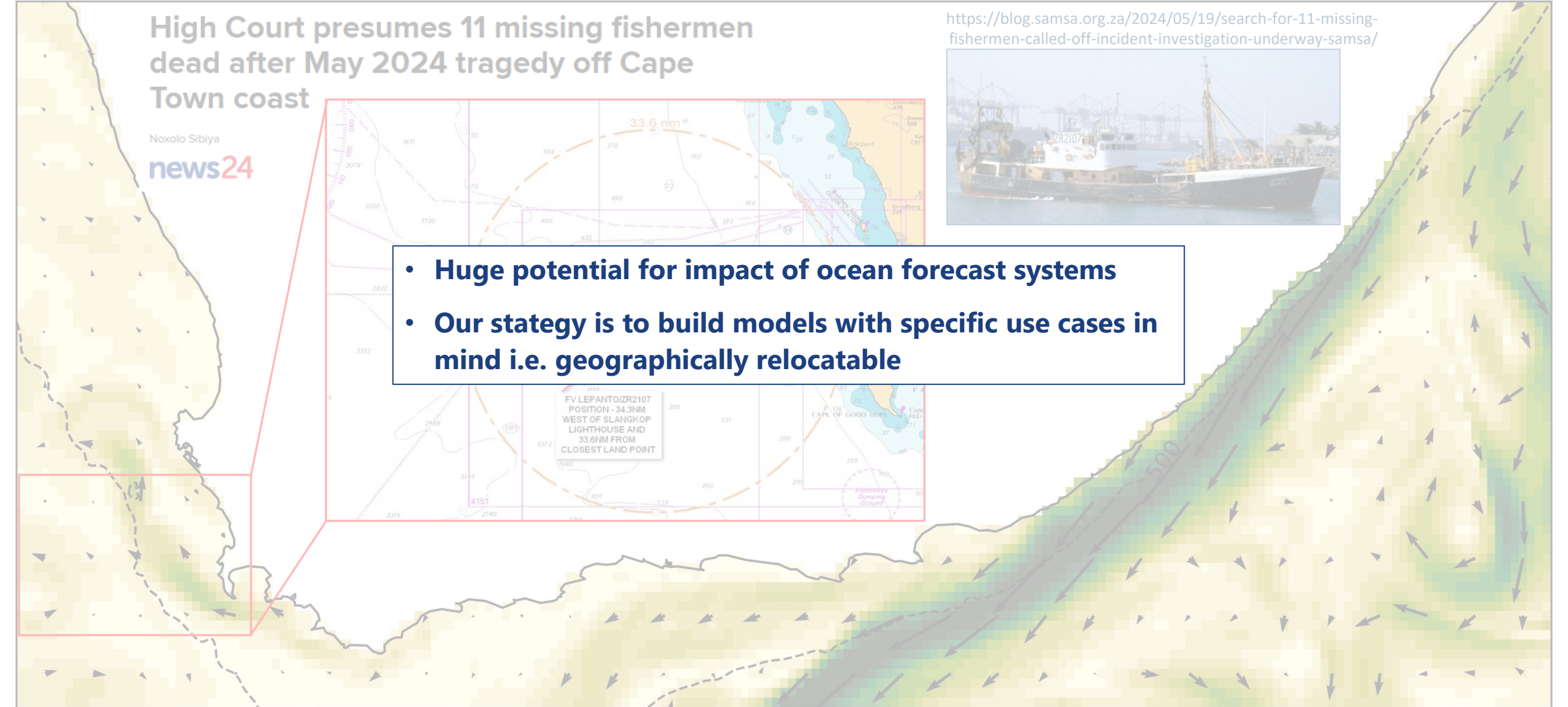
Noxolo Sibiya
news24

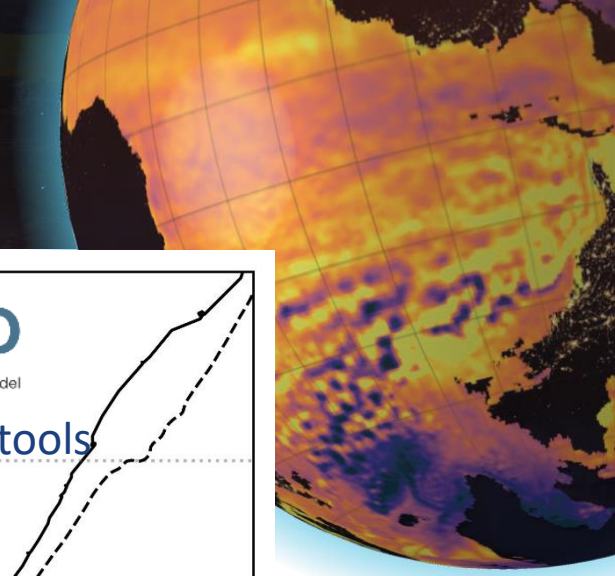
<https://blog.samsa.org.za/2024/05/19/search-for-11-missing-fishermen-called-off-incident-investigation-underway-samsa/>



- **Huge potential for impact of ocean forecast systems**
- **Our strategy is to build models with specific use cases in mind i.e. geographically relocatable**

FV LEPANTO/IR2107
POSITION - 34.3NM
WEST OF SLANGKOP
LIGHTHOUSE AND
33.6NM FROM
CLOSEST LAND POINT





Coastal and Regional Ocean COmmunity model configuration



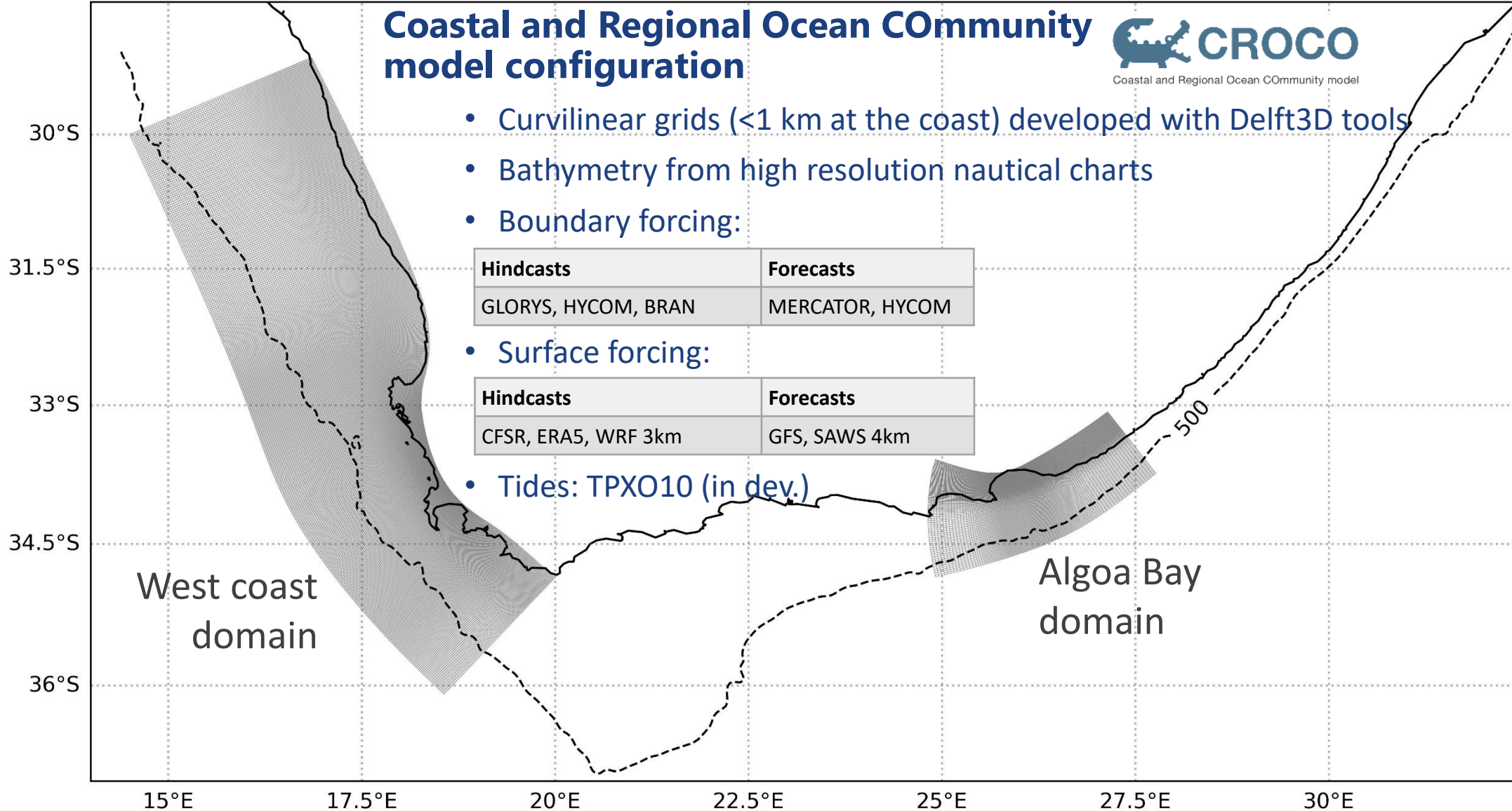
- Curvilinear grids (<1 km at the coast) developed with Delft3D tools
- Bathymetry from high resolution nautical charts
- Boundary forcing:

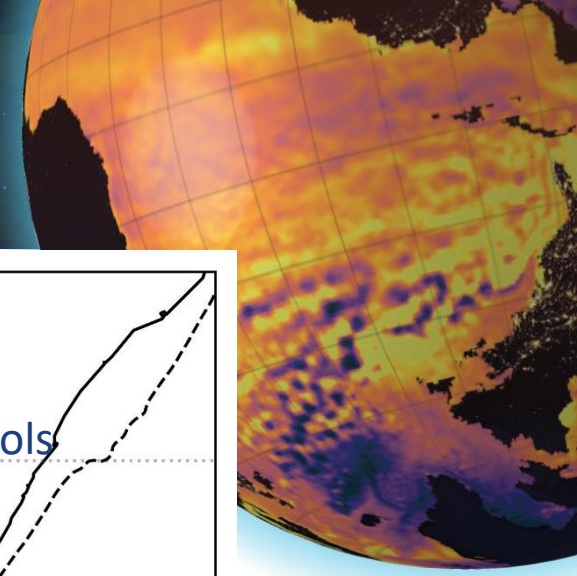
Hindcasts	Forecasts
GLORYS, HYCOM, BRAN	MERCATOR, HYCOM

- Surface forcing:

Hindcasts	Forecasts
CFSR, ERA5, WRF 3km	GFS, SAWS 4km

- Tides: TPXO10 (in dev.)





Coastal and Regional Ocean CCommunity model configuration

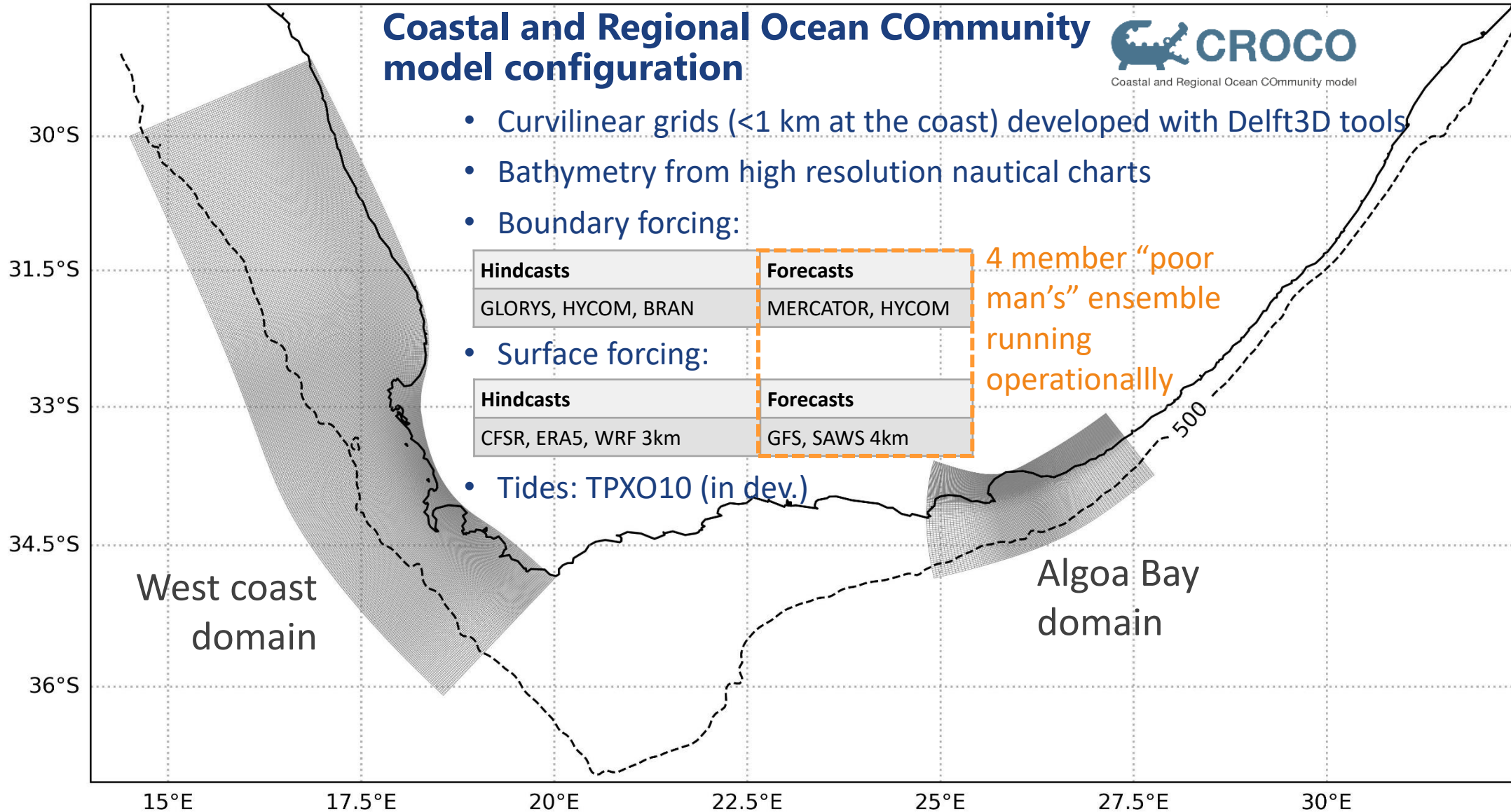


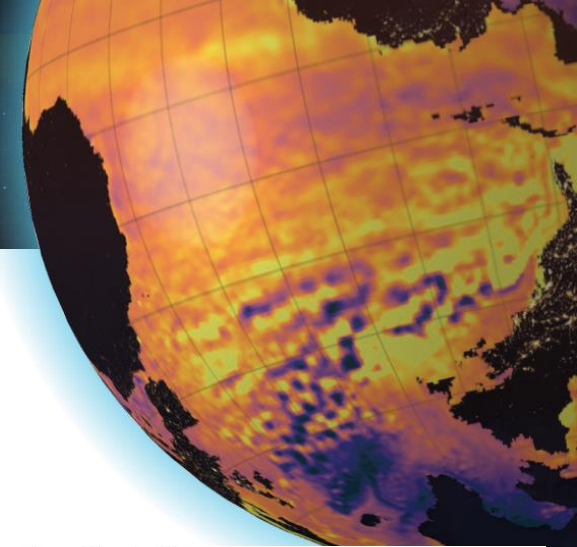
- Curvilinear grids (<1 km at the coast) developed with Delft3D tools
- Bathymetry from high resolution nautical charts
- Boundary forcing:

Hindcasts	Forecasts
GLORYS, HYCOM, BRAN	MERCATOR, HYCOM
Hindcasts	Forecasts
CFSR, ERA5, WRF 3km	GFS, SAWS 4km

4 member "poor man's" ensemble running operationally

- Surface forcing:
- Tides: TPXO10 (in dev.)



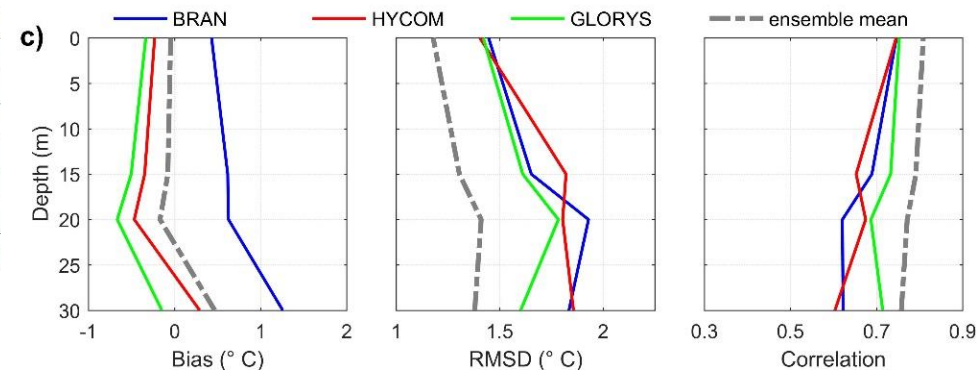
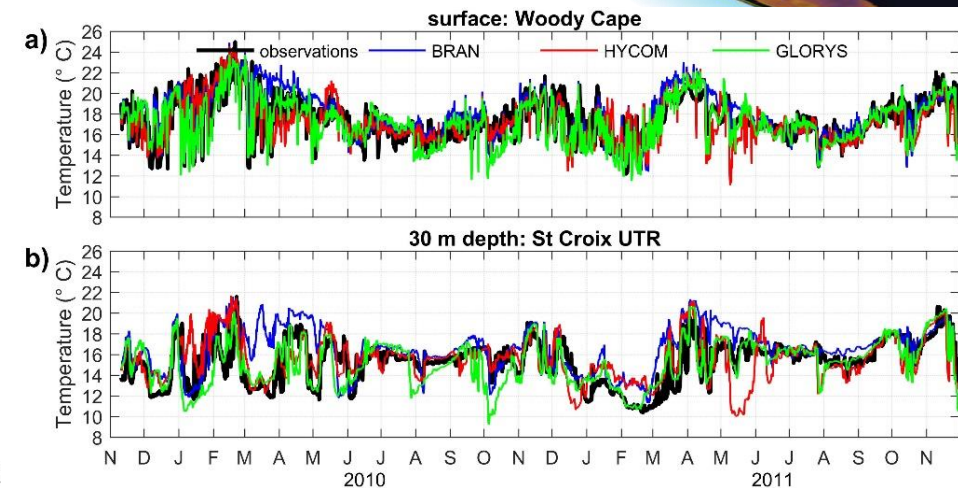
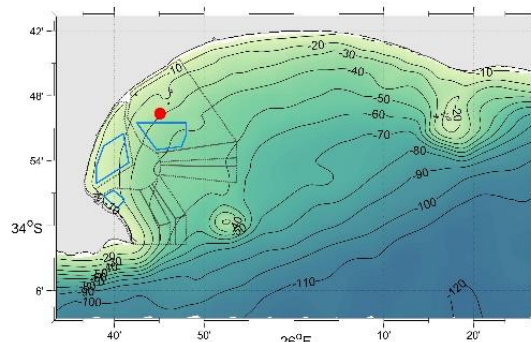
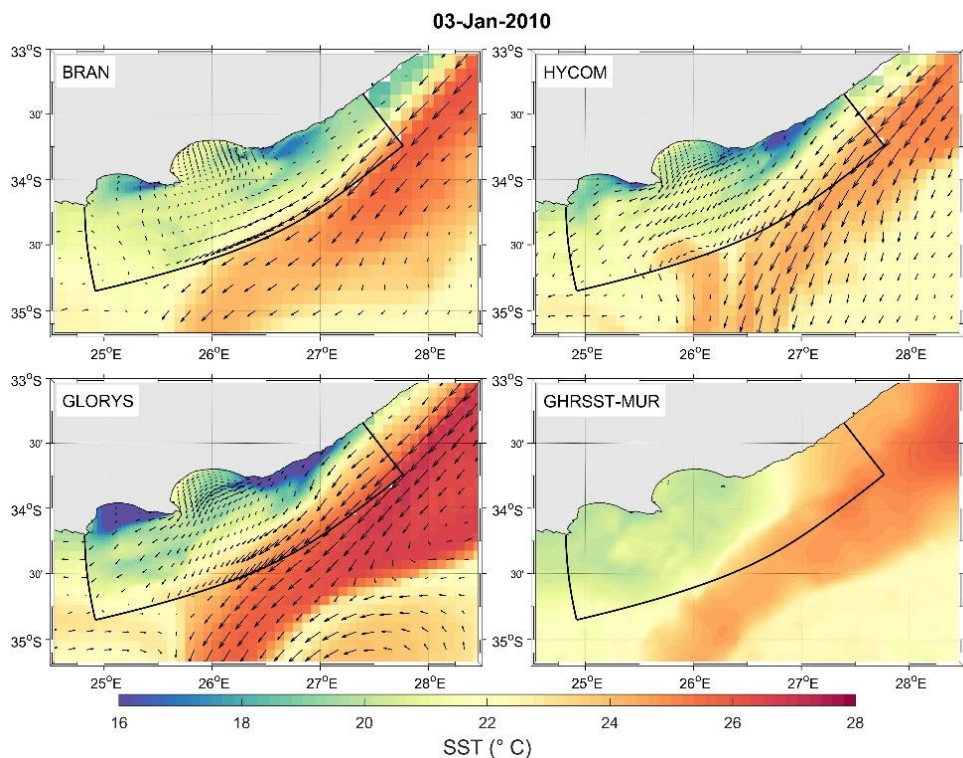


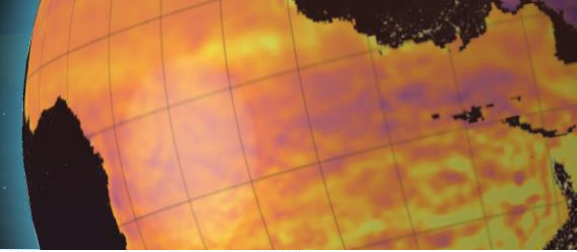
• Hindcasts using three different boundary forcings:

- **HYCOM**
- **GLORYS**
- **BRAN**

Algoa Bay domain hindcast: Evaluation of temperature

3 member ensemble mean outperforms any individual run



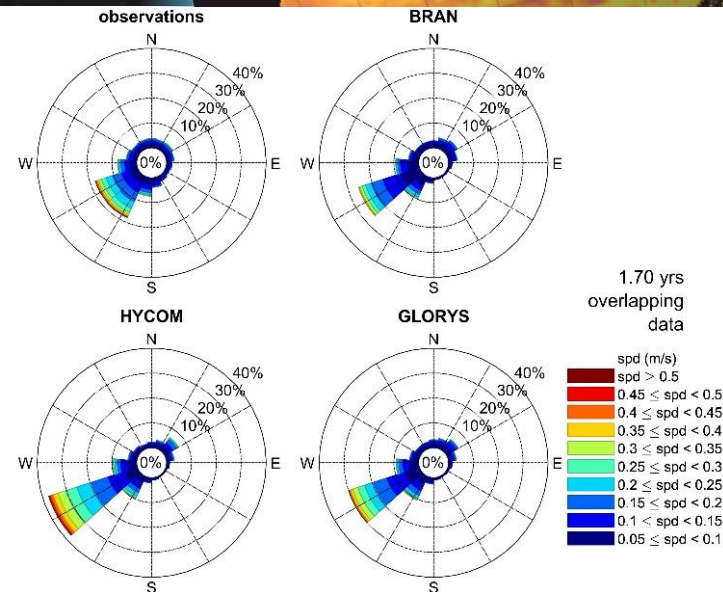


• Hindcasts using three different boundary forcings:

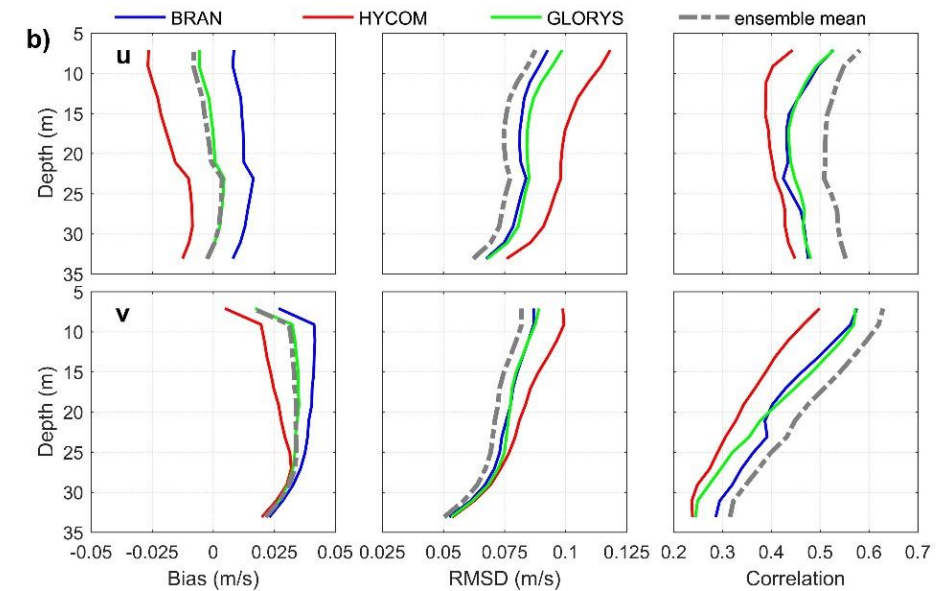
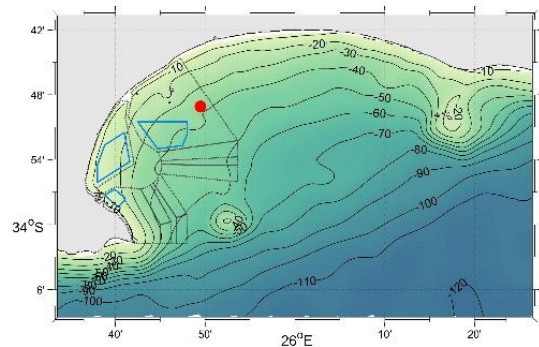
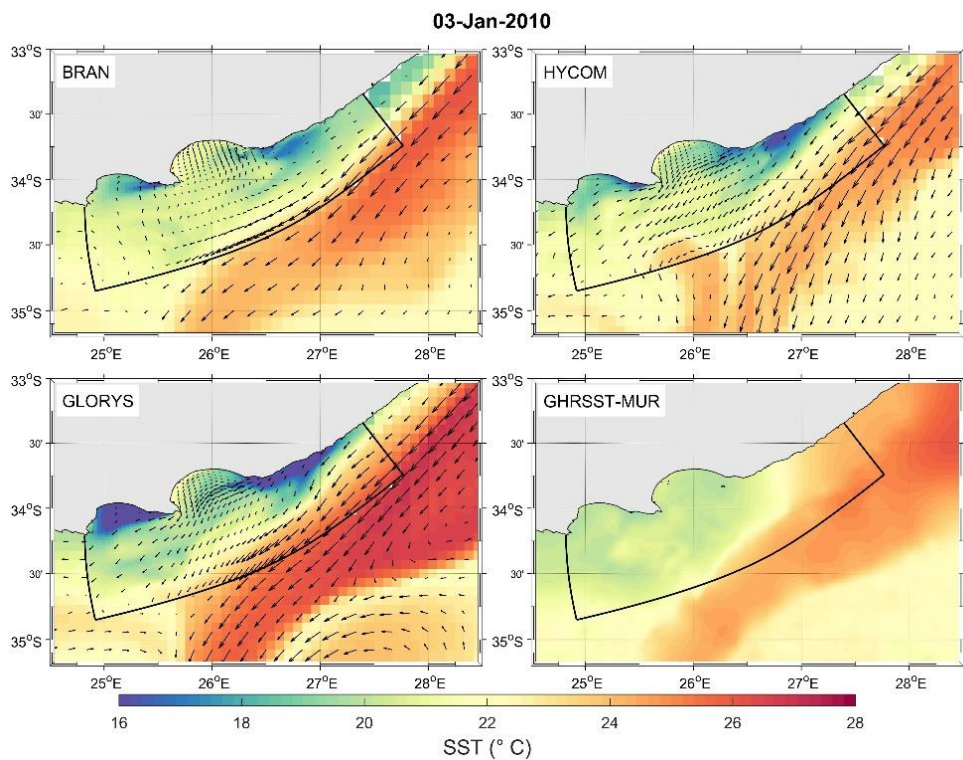
- **HYCOM**
- **GLORYS**
- **BRAN**

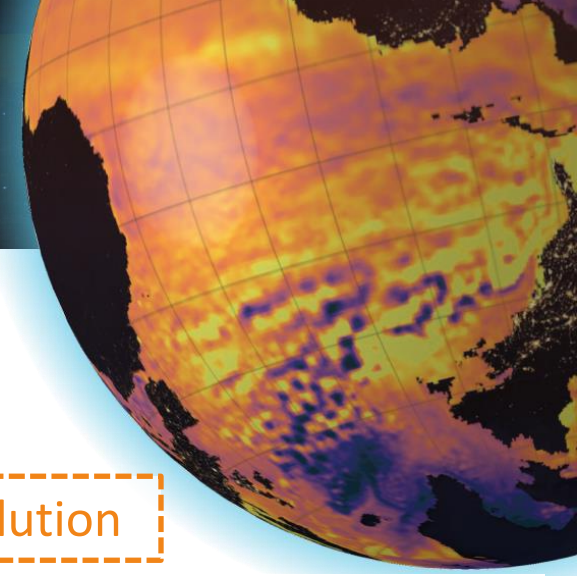
Algoa Bay domain hindcast: Evaluation of currents

a)



3 member ensemble mean outperforms any individual run



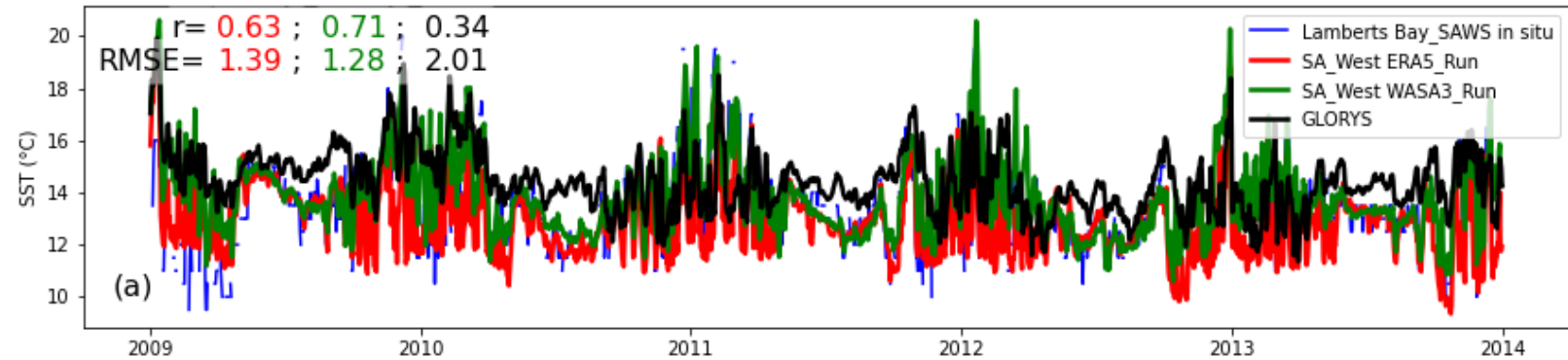


- Boundaries: GLORYS
- Surface: ERA5 and WRF 3km

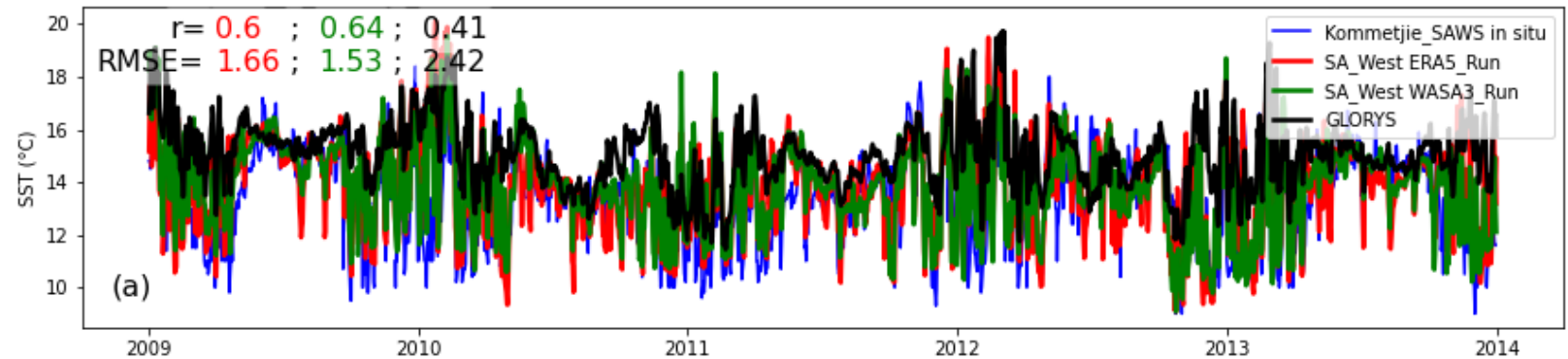
West coast domain: Evaluation of temperature

Downscaled solution outperforms the global solution

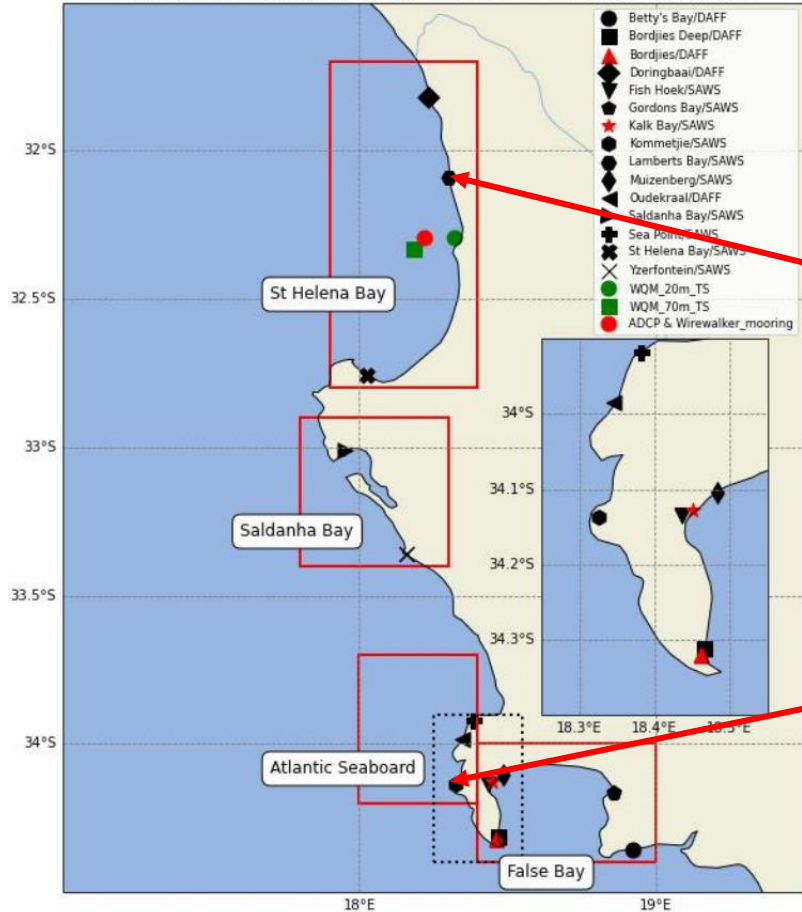
In situ vs Model SST timeseries

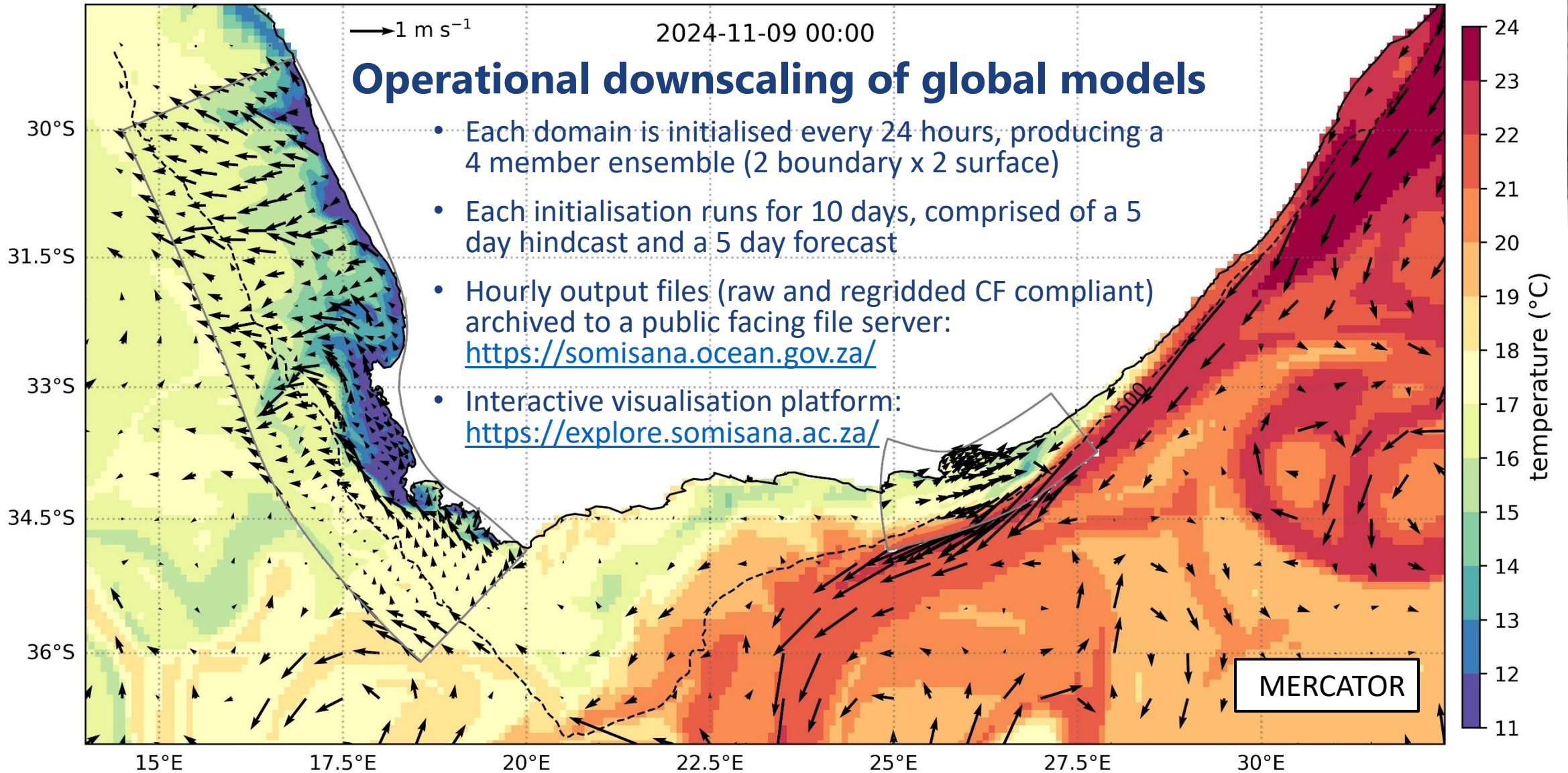
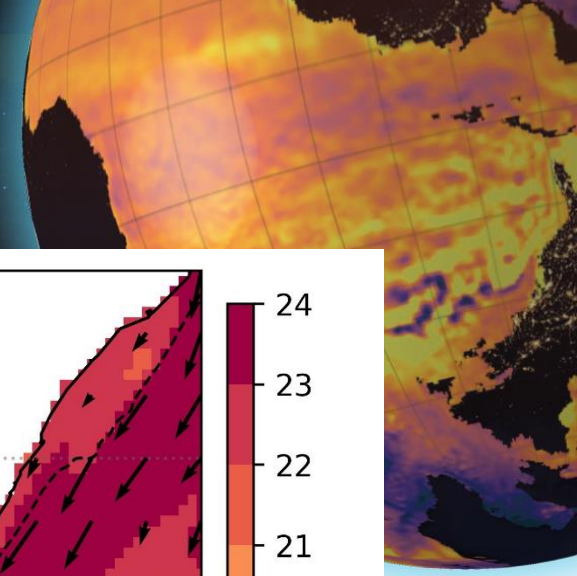


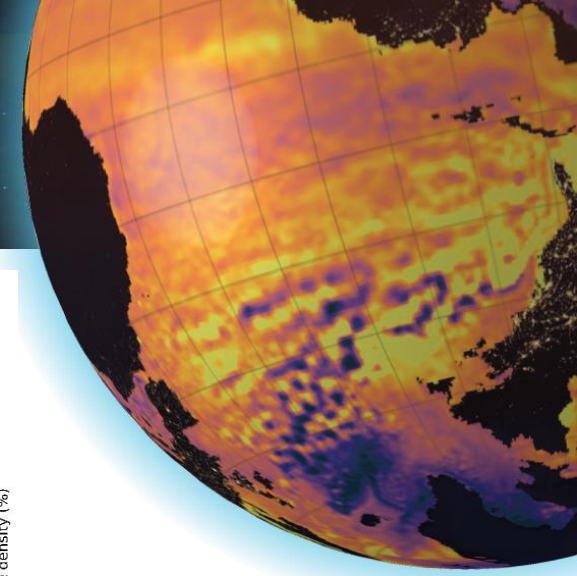
In situ vs Model SST timeseries



Map of UTR and surface Insitu Stations used for validation



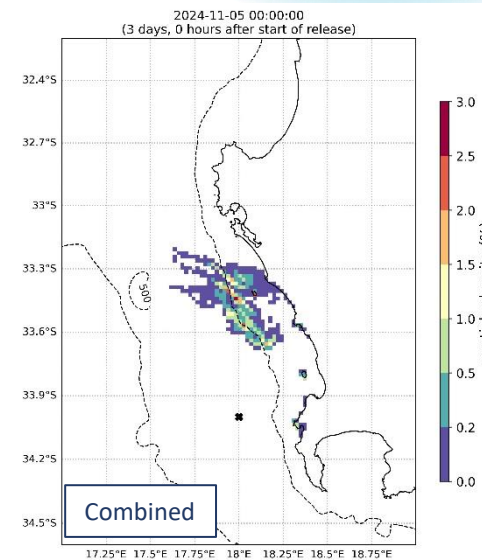
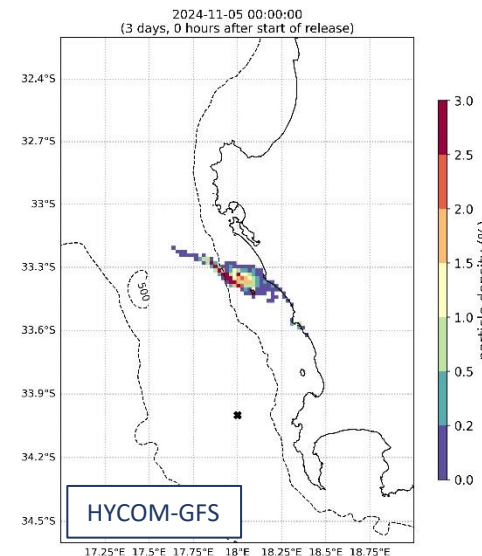
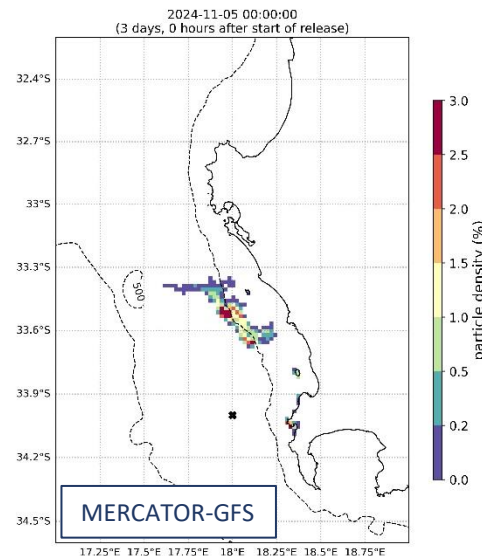
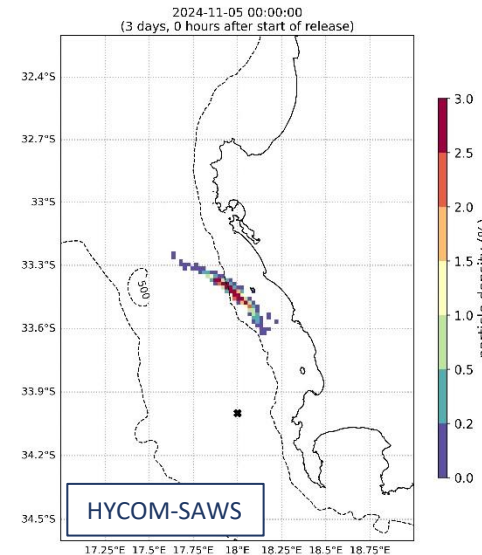
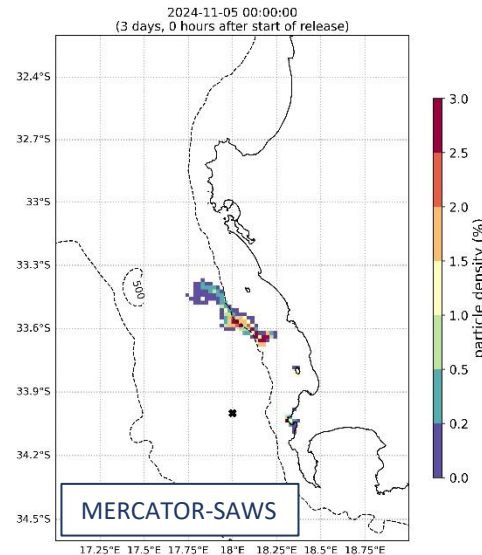
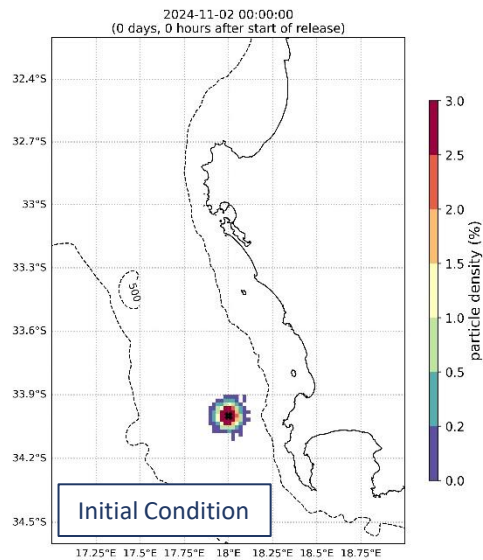


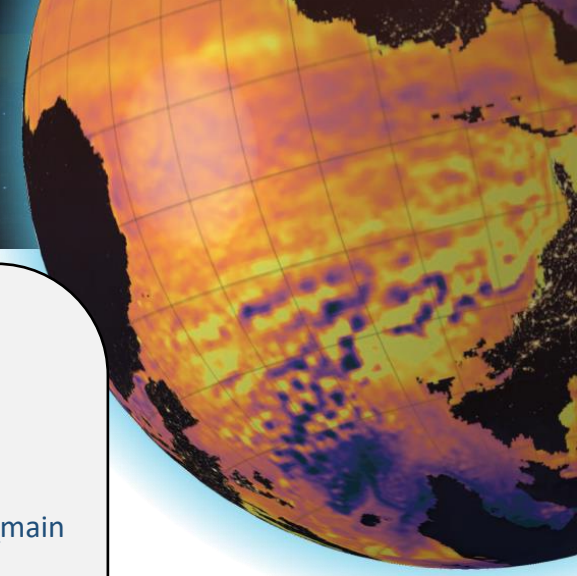


Operational particle tracking

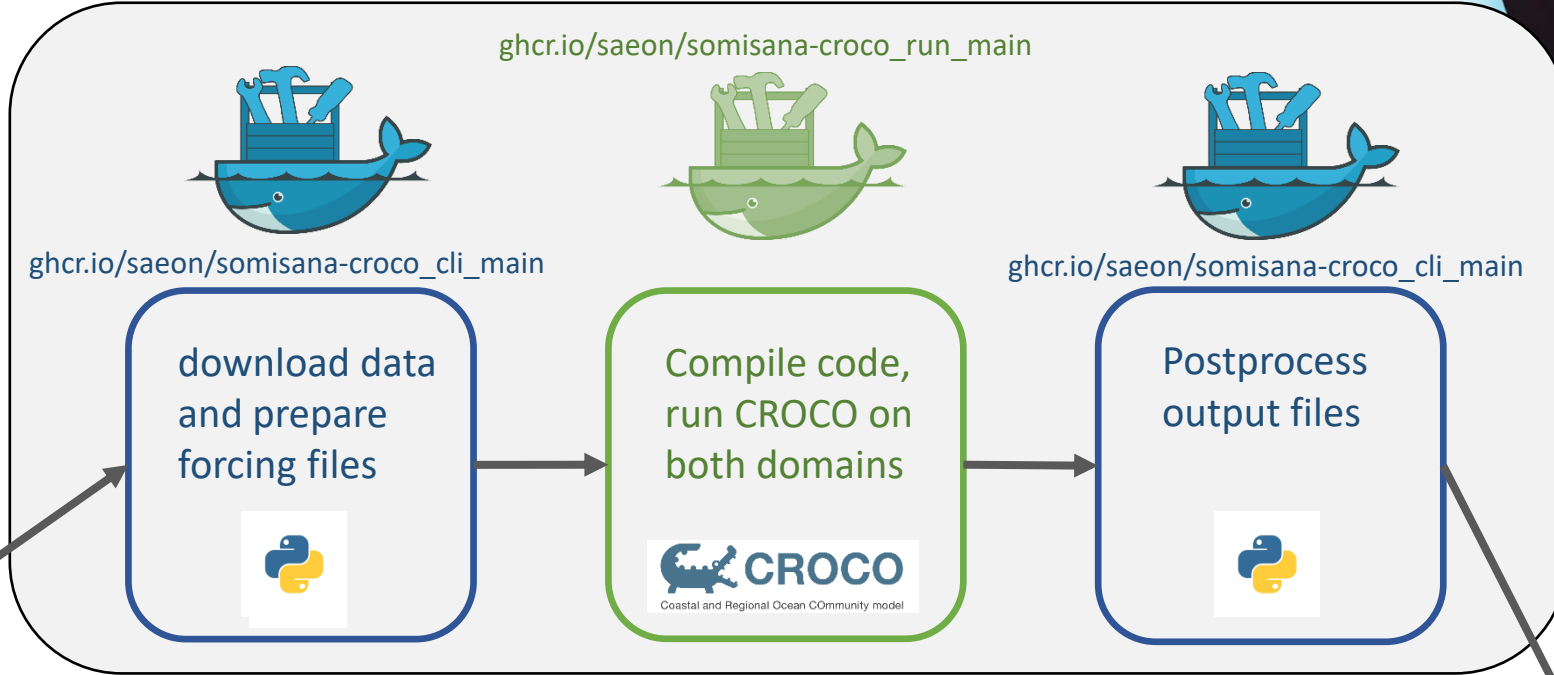


- OceanDrift
- OpenOil
- Leeway





Github
Actions
workflow
<https://github.com/SAEON/somisana-croco>



Upstream data providers

OGCMs:

- HYCOM 1/12°
- MERCATOR 1/12°

Atmospherics:

- GFS 1/4°
- SAWS 4 km

Tides:

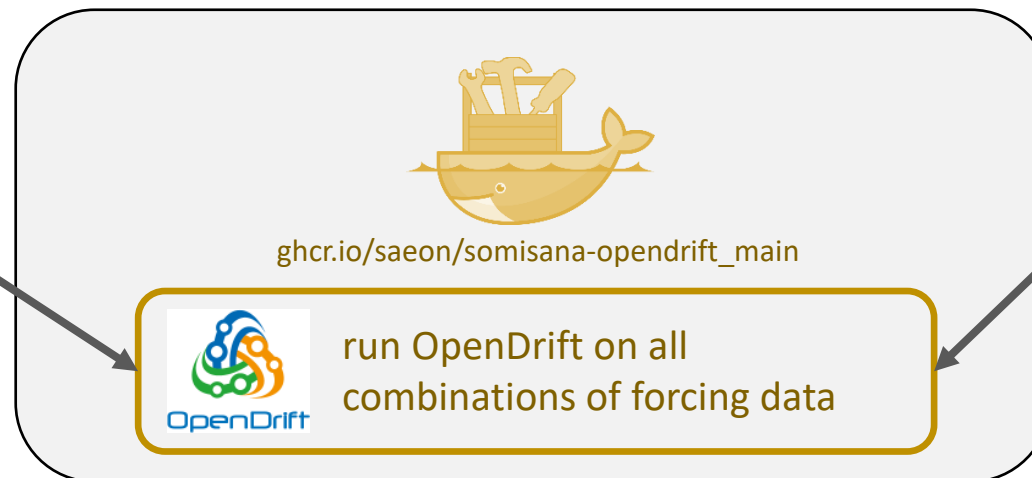
- TPXO10

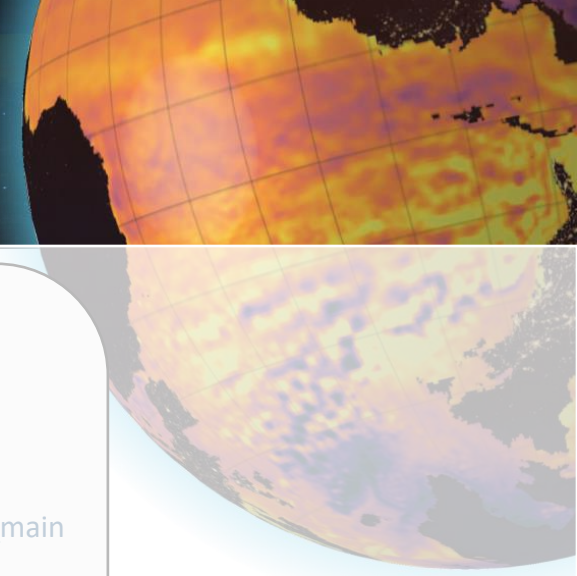
Data for downstream services

public facing file server

<https://somisana.ocean.gov.za/>

Github
Actions
workflow
<https://github.com/SAEON/somisana-opendrift>





Github
Actions
workflow
<https://github.com/SAEON/somisana-croco>



- **A relocatable system, both in terms of the geographical domain and the infrastructure on which it runs**
- **The workflow could be adapted by other developing countries with their own use cases in mind**

Upstream data providers

- OGCMs:
- HYCOM 1/12°
 - MERCATOR 1/12°

- Atmospherics:
- GFS 1/4°
 - SAWS 4 km

- Tides:
- TPXO10

Data for downstream services

public facing file server

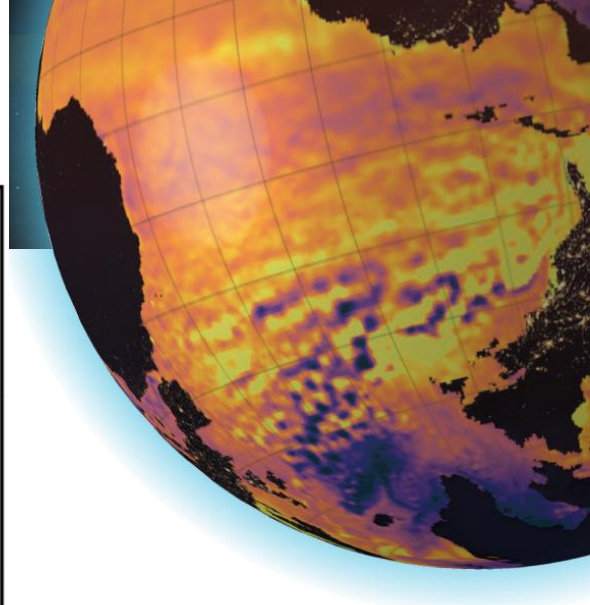
<https://somisana.ocean.gov.za/>

Github
Actions
workflow
<https://github.com/SAEON/somisana-opendrift>



Where to from here?

- New regional domain for South Africa, including data assimilation
- Increase number of ensemble members
- Improve weighting of ensemble members
- Include tides
- Further downscaling to estuary/port scales
- Coupling with WWIII, WRF
- Apply OpenDrift to HAB advection
-?





In partnership with



SYMPOSIUM OP'24

ADVANCING OCEAN PREDICTION
SCIENCE FOR SOCIAL BENEFITS

Thank you!

