

# **GTT** MAKING EXCEPTIONAL POSSIBLE



# WE ARE GTT

You have a strategy for how your business will expand and thrive, we have the network and expertise to help you deliver it.

In today's digital world, business require networks that are reliable, secure and agile. At GTT, we're specialists in global managed network and security services. We provide best-of-breed Software-Defined Wide Area Networking (SD-WAN) as a part of our Secure Access Service Edge (SASE) portfolio. We deliver solutions over our global Tier 1 IP network to quickly, reliably and securely connect your employees, partners, customers, data centers and offices wherever they are. And we manage the network on your behalf so your IT team can focus on what matters most – growing your business.

Technology and expertise are critical components of what we do at GTT, as is our commitment to service excellence. We're accessible, collaborative and proactive problem solvers who are with you every step, until the job is done. Our flexible service platform and local experts, ensure the networking solutions we deliver are designed to make exceptional possible for your business.



GTT provides managed networking services for many of today's most successful enterprises. Our solutions are designed to increase productivity and efficiency across your organization while giving you peace of mind that your network is secure. We help everyone from big tech companies to global manufacturers and large retail chains expand, develop and flourish.



# WE ARE YOUR TRANSFORMATION PARTNER



## **A comprehensive portfolio of managed networking and security solutions**

We employ the latest generation network and security technologies to offer best-in-class secure connectivity, managed networking, internet, and voice, all designed to meet your business objectives. GTT Secure Connect protects your expanding network, whether your employees are connecting from the office, home or another location. GTT managed SD-WAN solutions give you greater visibility and control across your WAN, with the ability to calibrate bandwidth speeds for optimized performance of mission-critical applications.

## **An expansive global reach**

Our global Tier 1 IP backbone spans six continents and directly connects to over 2,000 internet service providers and cloud providers. Our services footprint covers more than 140 countries, ensuring that we're there alongside you everywhere you do business.

We partner with leading technology companies and 400 preferred network suppliers around the world to design, deploy and manage network solutions tailored to meet your business objectives.

## **An outstanding customer experience**

We put our customers at the heart of what we do to focus on delivering a superior experience. We work with you to understand your networking and security challenges and develop solutions that address your specific business requirements. Our commercial model is among the most flexible available and includes flat-rate, burstable and aggregate billing options. We operate on a single customer management system, efficiently guiding customers through service design, installation, and management and giving you invaluable insight, visibility and control over your services. For a more customized service experience, customers can opt for a comprehensive package of professional services.



# WE ARE TRUSTED



The speed of our new network has improved tremendously with the help of GTT's SD-WAN overlay for corresponding data transfers.

**JAN HEILBRUNNER** DEPARTMENT HEAD OF NETWORKS AND SECURITY,  
ENDRESS+HAUSER



**5** OF THE TOP 10  
TECHNOLOGY  
FIRMS

**9** OF THE TOP 10  
TELECOM  
COMPANIES

**5** OF THE TOP 10  
PHARMACEUTICAL  
COMPANIES

**6** OF THE TOP 10  
AUTOMOTIVE  
MANUFACTURERS

**4** OF THE TOP 10  
GLOBAL  
BANKS

**9** OF THE TOP 10  
LARGEST AMERICAN  
PUBLIC COMPANIES

# BY THE WORLD'S LARGEST ORGANIZATIONS





GTT always gives us helpful input and support when we need it. If we have a problem, our awesome account team will help us determine a fix immediately, and then work with us to improve it iteratively as required over time.

**IAIN BLAZEY** HEAD OF IT, MITSUBISHI ELECTRIC UK



## SECURE CONNECT

GTT Secure Connect integrates Managed SD-WAN with cloud-based cybersecurity -providing the foundation of a SASE-based future. The move to cloud-based applications and hybrid work requires a new approach to enterprise security.

GTT Secure Connect provides enhanced protection without compromising performance, by optimizing your network and security posture.

GTT Secure Connect includes:

- Secure Connect Virtual Private Network (VPN): for the hybrid workforce concentrated in a specific region.
- Secure Connect Branch: to help brick and mortar locations secure the internet for employees, customers and suppliers.
- Secure Connect Enterprise: incorporating Firewall as-a-Service with Zero Trust Network Access to secure the hybrid workers and physical locations.
- Secure Connect Insights: for securing cloud-based applications and data, offices and remote workers.

## MANAGED FIREWALL

An extensive set of security capabilities that can be deployed on-premise or in the cloud.

Features include:

- Comprehensive security capabilities, including cloud and premise-based firewall, supported by administration, operations, monitoring, and maintenance.
- On boarding and ongoing support with planning, design, and implementation of the solution.
- Visibility with alerts of potential threats to help protect your data and meet compliance requirements.

## MANAGED SD-WAN

GTT Managed SD-WAN solutions optimize your connections, expand access to the cloud, improve application performance and securely transport traffic across your WAN.

Features include:

- Integration with GTT's global Tier 1 IP network for best-in-class network performance, assigning enterprise traffic to the highest-priority queue.
- Integrated with leading cloud service providers, including Google Cloud, Amazon Web Services and Microsoft Azure, for a better user experience.
- Customizable designs across leading technology providers.
- Reduce WAN management complexity with configurable web portal for increased visibility and control.



## DDoS MITIGATION

Clean internet traffic delivered on the same Dedicated Internet Access or IP Transit port.

Features include:

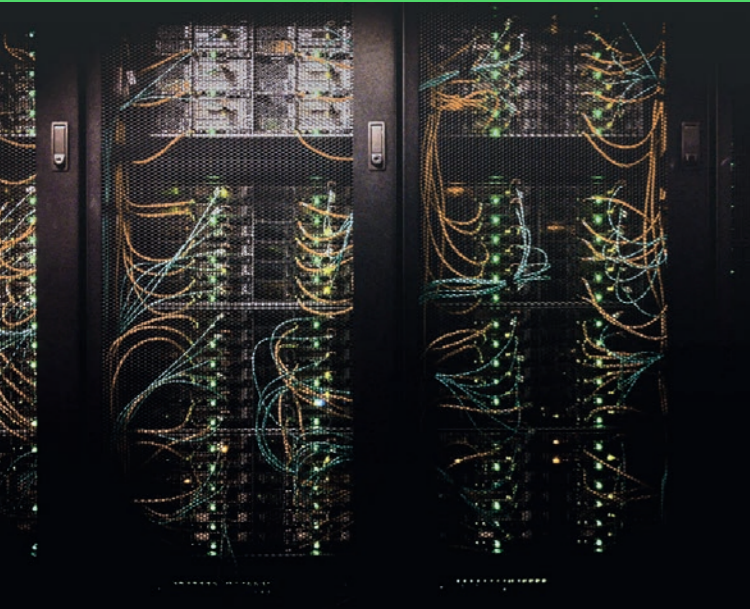
- Always on, client traffic aggregation to secure all inbound traffic
- Self-service reporting and automated real-time response and alerts
- Backed by a designated expert GTT DDoS Security Operations Centers

## MANAGED DETECTION AND RESPONSE

Our team of cybersecurity experts will defend your organization against advanced threats and attacks.

GTT MDR capabilities include:

- Ingestion from key log sources such as security devices and application services into GTT's Security Information and Event Management (SIEM) system.
- Certified security analysts to support real-time investigation and validation into high-severity and ongoing security incidents.
- Regular compliance reporting and strategic security guidance.



## MANAGED NETWORKING

We are a leader in managed enterprise networking, offering a comprehensive portfolio of managed internet and global wide area connectivity.

### Internet

We connect you to high-performance internet across our global Tier 1 IP network, among the largest in the world, for improved network performance through self-healing, predictive routing, analytics into malicious activity and periodic vulnerability scans.

Features include:

### IP Transit

- Deployed for carrier and global enterprises, providing reliable internet access for more bandwidth-intensive operations
- On-net routes and peering with all major Tier 1 IP networks: one hop to any internet destination
- Extensive range of supported Border Gateway Protocol (BGP) communities and tables to shape your traffic routing profile
- More secure internet routing via Resource Public Key Infrastructure-based route origin validation filtering on all BGP sessions

### Dedicated Internet Access

- Configured, managed and maintained solution proactively monitored by GTT Network Operations Centers
- Feature-rich, enterprise-grade IP service to access the internet or public cloud
- Shared circuit bandwidth with your WAN environment through separate prioritized connectivity

### Broadband internet

- End-to-end management of your GTT-provided broadband access (wired and wireless)
- Flexible, global internet connectivity via a variety of access technologies, including cable, DSL and wireless
- Ideal for organizations with distributed branch sites, as well as remote workers



## WIDE AREA NETWORKING

GTT offers a family of Layer 2 and Layer 3 connectivity solutions to meet the needs of global businesses, including:

### Multiprotocol Label Switching (MPLS) VPN

- Multipoint technology with traffic prioritization
- A layer 3 service for providing and maintaining connectivity with performance guarantees based on Service Level Assurances
- Multiple bandwidth options to configure networks based on business needs
- Detailed insights through EtherVision, GTT's customer web portal

### Virtual Private Local Area Network Service (VPLS)

- Traffic prioritization for Class of Service
- Flexible network designs, including multiple bandwidth and multipoint configuration options
- Global reach with connectivity to over 600 Points of Presence (POPs)

### Ethernet

- Point-to-point and multipoint Ethernet configurations
- Flexible bandwidth options from 10 Mbps to 400 Gbps
- Real-time insights into network performance backed by robust, global Service Level Assurances



## CLOUD CONNECT

We simplify your journey to the cloud with high-performance, secure connectivity - integrated with your network. GTT Cloud Connect provides:

- The performance advantage of GTT's global Tier 1 IP network to run your business' cloud IT infrastructure
- Direct private peering arrangements with the major cloud providers, providing redundant interconnects at every peering point
- Access to an expansive ecosystem of Infrastructure-as-a-Service and Software-as-a-Service providers around the world
- Options for Ethernet and managed MPLS private connections along with a wide range of bandwidth options from 100 Mbps to 400 Gbps



Compared with before, we now spend a lot less time troubleshooting calls as the GTT network is more reliable for external calling than our previous setup. If there is an issue, we go straight to GTT, who owns getting it fixed, which lets us focus on our business instead. The GTT EtherVision portal also means we now have full visibility across most of our phone number inventory, and this helps us greatly with allocating numbers to our staff and being more efficient with what we have.

**DANIEL HEBERT** SENIOR SYSTEMS ENGINEER AT LIONBRIDGE



## VOICE

We expand communication across your organization with our voice services, increasing productivity and reducing costs. Our global SIP-based voice network provides an integrated, flexible voice and collaboration platform.

### SIP Trunking

- Improve business collaboration and efficiency through the integration of critical communications over a single IP connection across our worldwide network
- Telephone numbers and porting in 58 countries; toll-free services in 120+ countries
- Fully redundant and secure with pre-established connections to leading UC platforms that include Microsoft Teams, Zoom Phone, and Cisco Webex Calling



## WE ARE:

- **EXPERTS**
- **PARTNERS**
- **GLOBAL**
- **LOCAL**
- **ALWAYS CONNECTED**
- **WITH YOU EVERY STEP OF THE WAY**

# WE ARE GTT

## ETHERVISION PORTAL

### Visibility, co-management and insights

GTT's EtherVision portal offers a modern, customizable user interface and provides you with comprehensive self-service and co-management functionality for end-to-end network visibility. Gain enhanced control over your network resources using this online reporting tool that includes the ability to monitor network performance, track orders, view invoices, and create trouble tickets quickly and efficiently.

## PROFESSIONAL SERVICES

### Industry-grade customer engagement and technical ownership

GTT's rich Professional Services portfolio is designed to customize and support the service experience for customers who purchase any GTT solution. Professional Services applies technical expertise, operational experience, established governance frameworks, service management principles and business knowledge to deliver complex, transformation solutions. The team has operational backgrounds with decades of experience and act as your passionate advocate to assure the successful design, delivery, and ongoing support of GTT solutions in support of your network transformation projects.





# OUR

GTT operates one of the world's largest Tier 1 IP networks. We have strong network supplier relationships, providing diverse access to any location in the world and any application in the cloud.

# GLOBAL NETWORK

## 260+

On-network cities on six continents

## 2000+

Directly connected IP networks and cloud providers

## 220TBPS

Total IP edge capacity

## 140+

Countries with client services

## 400

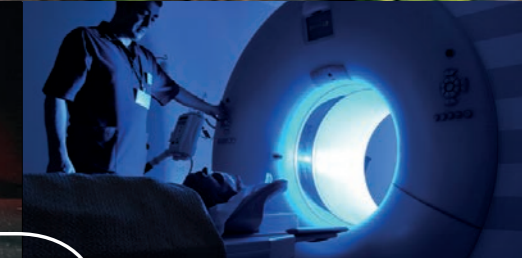
Preferred network partners for best-in-class performance

## TIER 1 ISP

Top-ranked internet backbone (Source: CAIDA 2022)

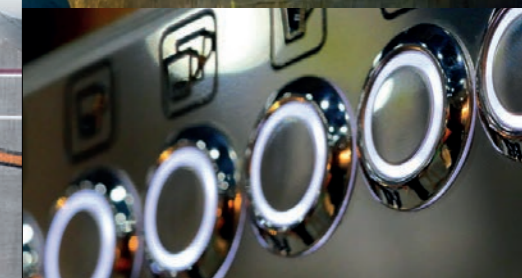






FROM BIG TECH COMPANIES TO GLOBAL MANUFACTURERS  
AND LARGE RETAIL CHAINS, **WE HELP EVERYONE...**

# EXPAND **DEVELOP** & **THRIVE**





GTT is a managed network and security services provider to global organizations. We design and deliver solutions that leverage advanced cloud, networking and security technologies.

We complement our solutions with a suite of professional services and exceptional sales and support teams in local markets around the world. We serve thousands of national and multinational companies with a portfolio that includes SD-WAN, security, internet, voice and other connectivity options. Our services are uniquely enabled by our top-ranked, global, Tier 1 IP backbone, which spans more than 260 cities on six continents.

The company culture is built on a customer-first service experience reinforced by our commitment to operational excellence and continuous improvement in our business, environmental, social and governance practices.

For more information, visit [gtt.net](https://gtt.net)