



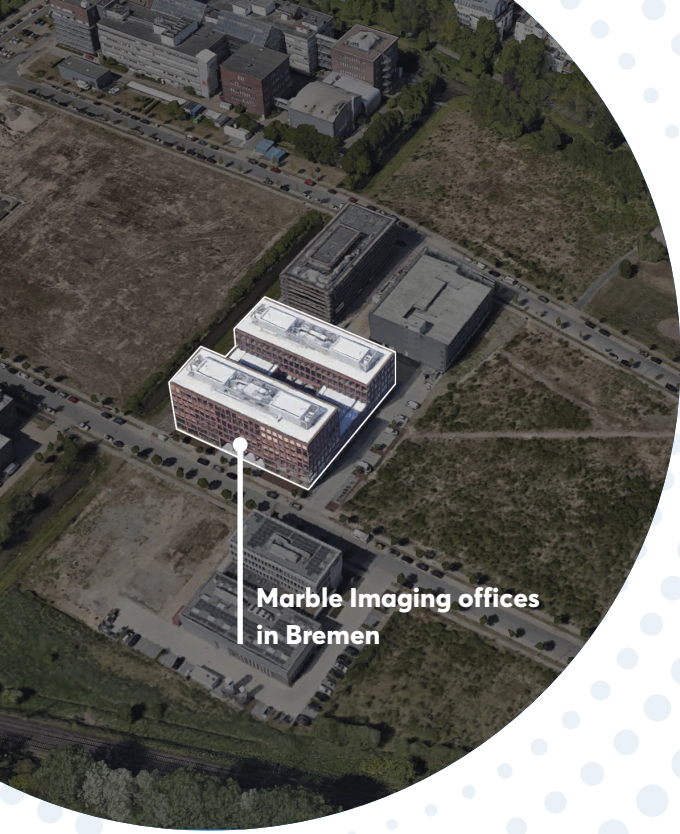
marble imaging

Earth
Observation
reimagined.

With Marble Imaging, we will
unleash the full potential of global
Earth Observation data by providing
powerful EO based analytics and
insights.



www.marble-imaging.de



Founded in August 2023 in the German aerospace hub Bremen, we are ready to show the world the real potential of affordable and accessible EO data.

We aim to be ...

... the first European provider to capture areas of interest worldwide hourly in very high-resolution using our constellation of small satellites.

... a leading provider of Earth Observation (EO) data solutions focusing on commercially applicable environmental and security use cases.

Marble Imaging is a German NewSpace company specialized in EO analytics and services. Already now we offer crucial insights analyzing both public and commercial satellite imagery. With the help of Marble's future constellation, we will be able to deliver even more tailored high quality products and plan to emerge as a new and reliable European source to satisfy the increasing demand of institutional and commercial EO users.

Our Team

The growing Marble Imaging team brings together a wealth of expertise from senior leadership positions within prominent European EO initiatives. Our collective background encompasses the full

Up- and downstream EO experience

spectrum of EO science and data processing. Moreover, we possess a deep understanding of leveraging EO data as ultimate beneficiaries.



Robert Hook
CEO, Aerospace
Engineer



Dr. Gopika Suresh
CSO, Earth
Observation Scientist



Alexander Epp
CMO, Journalist



Dr. Raul Scarlat
Earth Observation
Scientist

The Founders

The key

Ground resolution vs frequency vs price

Copernicus Sentinel-2

Resolution: 10 m
Frequency: weekly
Cost: 0 €



Resolution: 3 m
Frequency: Daily
Cost: 2-7 € / km²

Marble Imaging

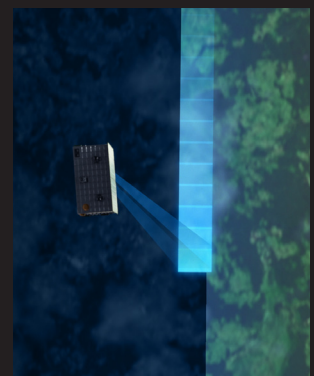
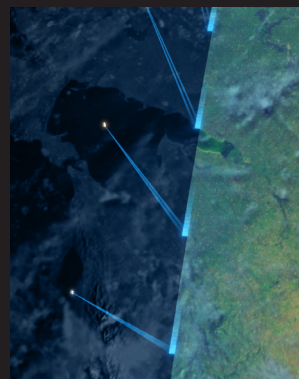
Target resolution: 50 cm
Planned frequency: Hourly
Cost: starting 6 € / km²



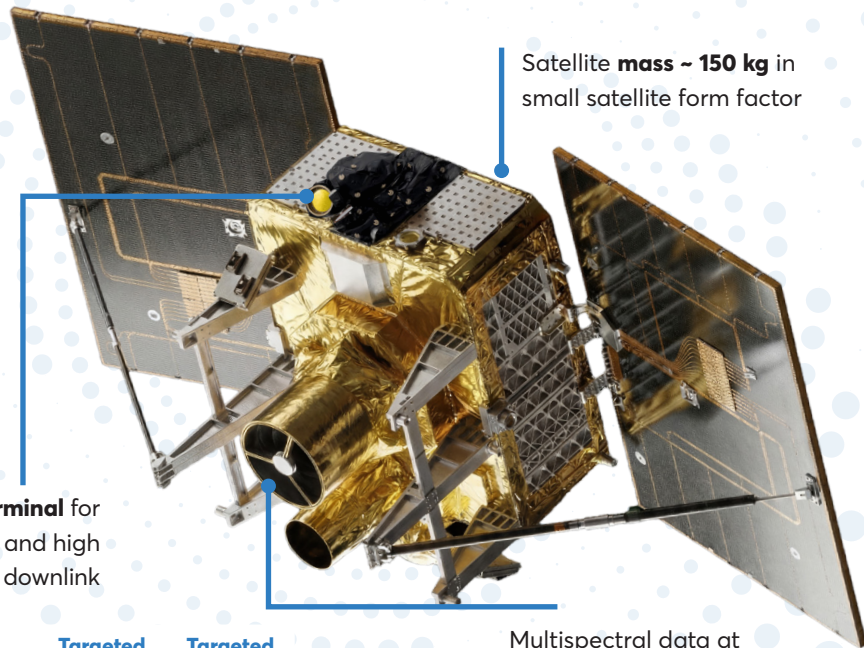
Resolution: 30 cm
Frequency: irregular
Cost: 18+ € / km²

Flexible and fair pricing models targeted to the customer's needs

To maximize the value gained from our business insights, we are developing a high performance constellation of very high-resolution satellites with daily global coverage.



Our very high-resolution small satellites



Data from first satellite available in **Q1 2027**

Data available as **preprocessed** and **analysis ready data**

Distributed via our **geospatial portal**

Laser terminal for secure and high volume downlink

Satellite **mass ~ 150 kg** in small satellite form factor

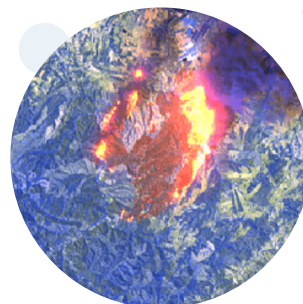
Multispectral data at **sub meter GSD**, **harmonized with Sentinel-2**

Band	Central Wavelength [nm]	Use case	Targeted product resolution first sat. [m]	Targeted product resolution constellation [m]
B1	Pan	Image sharpening	0.7	<0.5
B2	Blue	Land cover classification	0.7	<0.5
B3	Green	Land cover classification	0.7	<0.5
B4	Red	Land cover classification	0.7	<0.5
B5	Red Edge	Vegetation health and degradation	0.7	<0.5
B6	Red Edge	Vegetation health and degradation	0.7	<0.5
B7	Red Edge	Vegetation health and degradation	0.7	<0.5
B8	NIR	Vegetation health and degradation	0.7	<0.5
B9	Cirrus	Cirrus cloud detection	6	<6
B10	SWIR2	Construction /Fire / minerals mapping	6	<6
B11	SWIR 3	Construction /Fire / minerals mapping	6	<6



VIS/NIR + AIS

Visible, Near Infrared product resolution target for first satellite: **70 cm** (<50 cm for constellation) and **Automatic Identification System** receiver



SWIR

Short Wave Infrared product resolution target for first satellite **6 m** (<6 m for constellation)

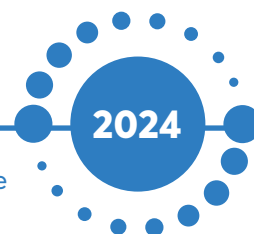


Founded in Bremen | Germany
08|2023

Joined ESA BIC Northern Germany
09|2023

Pre-Seed-Round completed
10|2023

Winner of DLR Small Satellite Payload Competition
11|2023



Developing cutting-edge security analytics

Activity Detection and Monitoring

We offer and constantly improve our AI supported Activity Detection and Monitoring (ADaM) for comprehensive and timely monitoring of security-relevant locations and hard-to-reach infrastructure.

- **Object detection** of military and civilian planes, vessels and vehicles using high and very high-resolution satellite imagery. We further develop:
- **Classification of detected objects** using proprietary training data sets and an in-house AI model.
- **Integration of AIS data** to provide improved maritime threat detection and detect suspicious activities by combining EO and AIS data.
- **Change detection** (SAR and multispectral data based) to provide alerts if changes in urban areas or in land cover are detected in critical areas.
- **Time-series analysis** to count changes or number of objects per image between time intervals.

Terrain and Trafficability assessment

With our terrain trafficability analytics, we assess changing terrain conditions to support planning of logistical and security operations in challenging landscapes such as off-road, undeveloped, wild and rural environments.

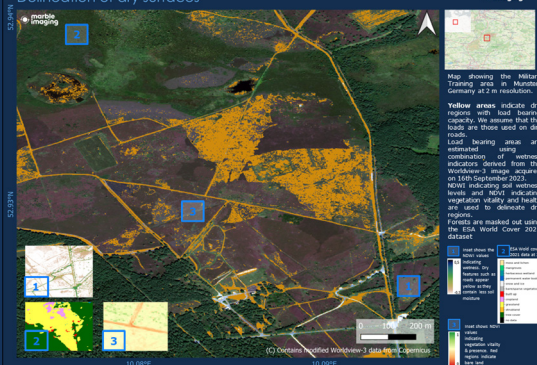
- **Detection and estimation of soil moisture properties and load bearing capacity**, ensuring that ground conditions are suitable for vehicle movement and operations, reducing risks of soil damage and compaction.
- **Informed deployment of rescue equipment and emergency vehicles** in the areas affected by natural or anthropogenic disaster events, judging the trafficability of terrain when normal roads or bridges are damaged.



AI supported Crisis Awareness

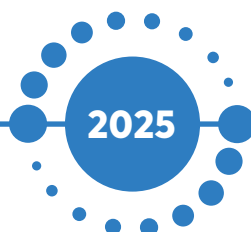


Delineation of dry surfaces



Consortium for first satellite completed 03|2024

Funding for first satellite via DLR and ESA completed 08|2024



Start development of PCIS, Co-funded by BAB and EU 04|2025

Start development of data portal Drago scope & object and anomaly detection products 04|2025

Developing ground-breaking environmental analytics



Coastal monitoring

We offer an imaging information system to **detect, quantify, and address coastal vulnerabilities**: The Precious Coast Information System (PCIS):

- A comprehensive view of **coastal vulnerability & contributing risks**,
- to help identify factors and places that are at risk to disturbances from **coastal hazards**,
- and provide insights for **mitigation and adaptation**.

This solution will support stakeholders and decision makers by:

- combining **EO images & data with advanced algorithms** to identify hotspots and factors contributing to vulnerability,
- leveraging **AI & ML** for a multi-sensor approach (SST, SSH, wind etc.) to understand risks & long term coastal dynamics,
- and **integrating socio-economic data** allowing for actionable insights.



Co-funded by the European Union



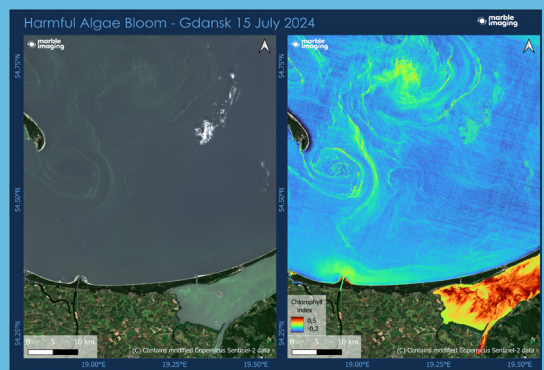
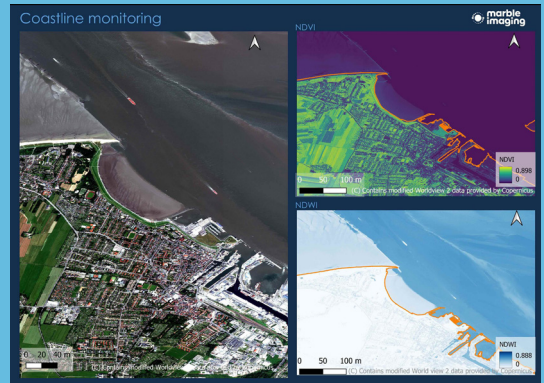
Aquaculture monitoring

We engage in proactive monitoring of the Blue Economy empowering sustainable practices for fishing and aquaculture activities.

- **Monitoring the emergence and development of harmful Algae Blooms & marine pollution**, ensuring timely response and mitigation actions to maintain healthy marine ecosystems,
- **mapping aquaculture structures** such as fish farms and cages,
- supporting aquaculture and fishing operations by providing **early warnings of potential hazards** such as infestation,
- and **land cover change analysis and deforestation detection** to support aquaculture certification and regulation.



precious marble



3 Million € contract with ESA CCM secured 06|2025

5.3 Million € Seed-Round closed 12|2025

2026

Data from first satellite available in Q1|2027

Scaling up dual-use product development and services from Q1|2026

2028

Developing our constellation of 20 satellites until end of 2028