



Empowering Construction & Engineering Using Procurement to Build Strong Project Foundations

Today's global Construction & Engineering firms are faced with growing demands within an increasingly competitive landscape. To win new business whilst protecting precious margins, it's critical to have complete control over project spend and robust, risk free, supply chains. That's why Ivalua's seamless 360 Procurement journeys helps an organisation:

- ✓ Build with Confidence when Budgeting Projects
- ✓ Strengthen Collaboration with Transparent Work Packages
- ✓ Visualise the Whole Supply Chain while Reconciling Costs

Ivalua's Construction & Engineering solution offers a best-in-class Procurement journey and tightly integrated processes that removes the challenges created by a fragmented product landscape. By offering sourcing through to payment in a single journey, high level automation is achieved, while the added transparency reduces supplier risk and keeps every project running to budget.

Reduce Budget Risks

- ✓ Set project level budgets to ensure common standards and compliance is enforced
- ✓ Visibility of historical contractor performance and snagging to improve budget precision
- ✓ Identify common Contractors and Sub-contractors across the project to spot additional areas of saving or risk

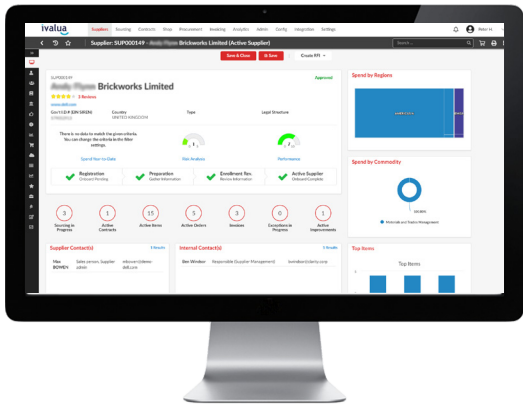
Control Work Packages

- ✓ Run scheduled sourcing events to select the best Contractor for each Work Package
- ✓ Monitor Work Package performance against real-time transactions from receipts to invoices
- ✓ Ensure the compliance of on-site procurement through online self-service catalogues covering materials and trades

Cost Value Reconciliation

- ✓ Track Work Package deliverables in real-time against milestones and contracts
- ✓ Contractor quality and cost reports to enable project level value reconciliation
- ✓ Identify risks within the supply chain to limit cost exposure and protect project margins

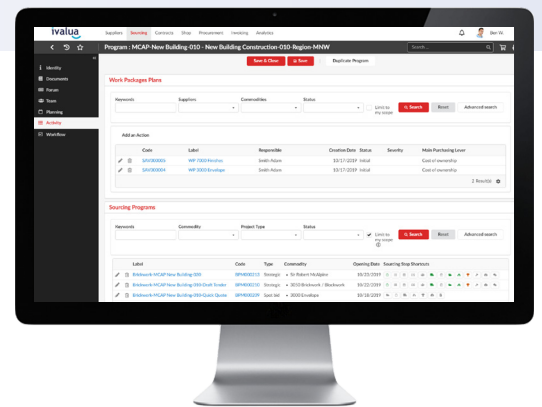
Control Budget Risks



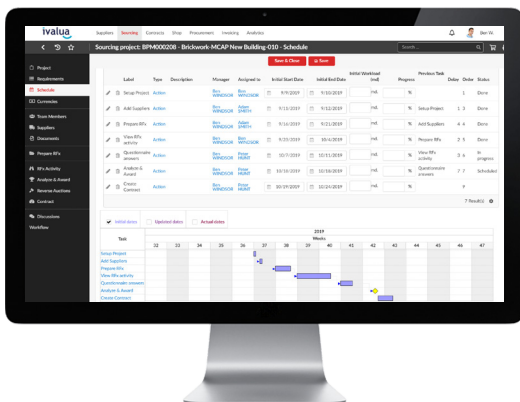
By enabling Construction & Engineering project teams to set budgets based on Contractor or Supplier performance, Ivalua allows organizations to budget with confidence, measure spend against contracts, and track performance & risk across the whole supply chain.

Transparent Work Packages

The high cost of sourcing Contractors or Suppliers is compounded by the need to monitor risk. To address this, within Ivalua you can visualize work package performance to enable the just-in-time sourcing of Suppliers and then the monitoring performance. While our mobile technology unlocks remote purchasing from catalogues to control spend and quality.



Real-time Cost Reconciliation



Without real-time project visibility, a project can quickly suffer from margin erosion through unseen costs. By reconciling costs, deliveries and quality against Work Packages in real-time, Ivalua ensures projects run to budget, whilst identifying supply chain risks that could impact on the Construction & Engineering project's delivery schedules.

Proven, reliable partner for construction & engineering organizations.



ABOUT IVALUA

Ivalua is a leading provider of cloud-based Spend Management solutions. Our complete, unified platform empowers businesses to effectively manage all categories of spend and all suppliers, increasing profitability, lowering risk and improving employee productivity. Trusted by hundreds of the world's most admired brands and recognized as a leader by Gartner and other analysts, Ivalua maintains the industry's leading 98%+ customer retention rate.

Realize the possibilities at www.ivalua.com.
Follow us at [@ivalua](https://twitter.com/ivalua).