

irly

**Simply
switch on**

A person wearing a VR headset and interacting with a digital cityscape overlay.

Simply switch on



A CONSULTING FIRM FOCUSED ON DIGITAL TRANSFORMATION OF CORPORATE FUNCTIONS

Faced with extreme economic uncertainty, growing pressure on costs, rapid technological change and higher end-user expectations, companies are actively seeking a fresh competitive edge with particular focus on their corporate functions. They are still considered as service providers of necessary, yet undifferentiated services.

In an environment driven by innovative technologies, data centricity and new ways of working, corporate functions now represent a tremendous and multifaceted opportunity.

Irly provides consulting expertise to build the next generation of support functions. We help you unleash the value of your organization and pivot your business model through digital transformation.

Being 'hybrid' is our trademark : user centric, combining in-depth Business knowledge and strong technology expertise to realize end-to-end transformations.

A high-angle, wide shot of a Parisian skyline at night, heavily filtered with a blue color grade. The Eiffel Tower is visible in the distance on the right. In the foreground, a street with a tram and cars is visible. Several skyscrapers and office buildings are prominent, including one with 'ALSTOM' signage. The overall mood is modern and urban.

irly

Who we are ?

Our DNA



FOCUS ON DIGITAL TRANSFORMATION OF CORPORATE FUNCTIONS

- Our offerings are dedicated to support functions (Finance, Risk, Compliance, Procurement, ...)
- Our experience leading multi-year programs to transform the value chain of corporate functions for global organizations, position us as experts to implement innovative operating models
- We aim at unleashing the value of your organization and pivot your business model



'HYBRID' CONSULTANTS - BUSINESS & TECH EXPERTS -

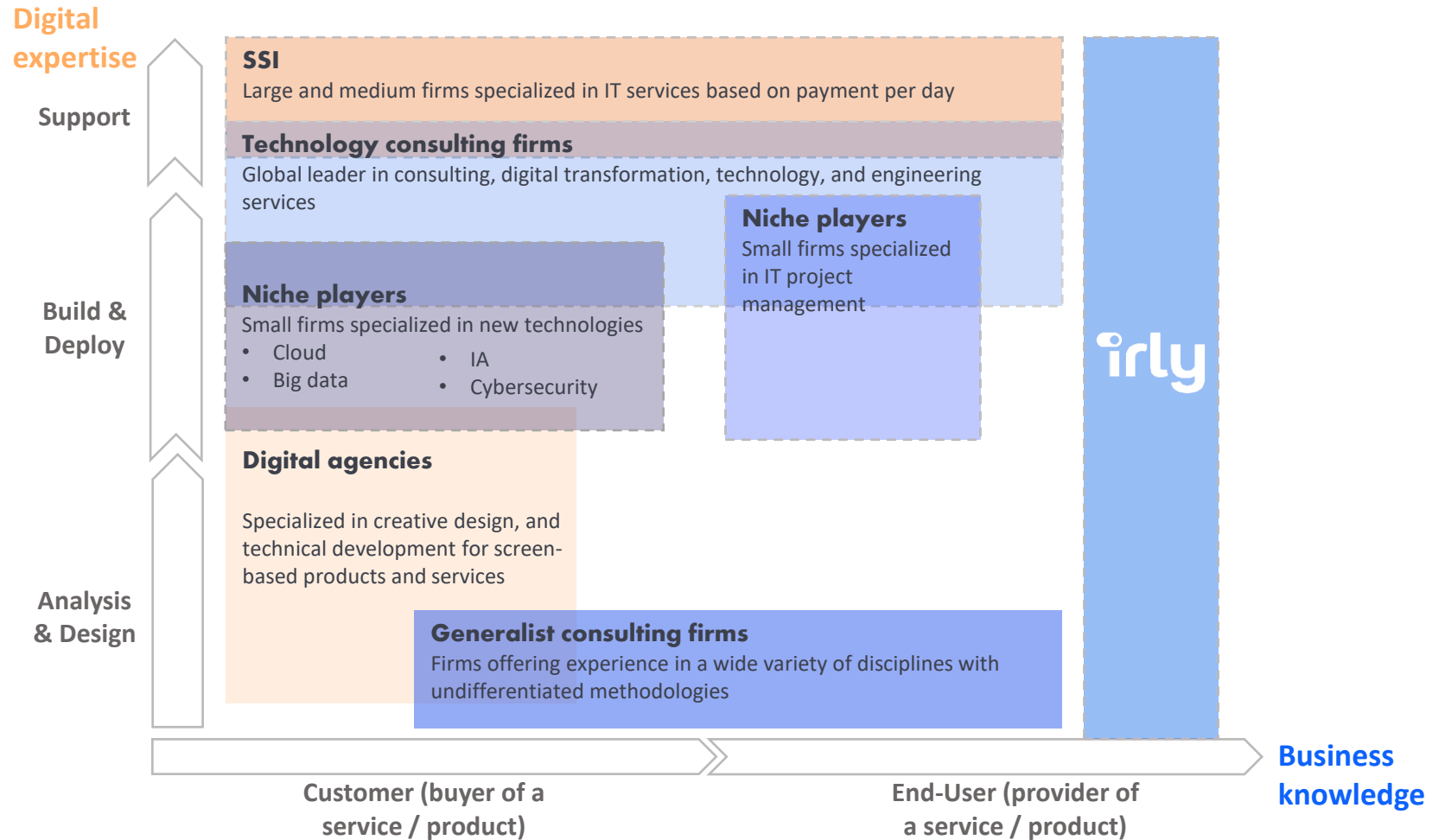
- We combine in-depth Business knowledge and a strong technology expertise to realize end-to-end transformations
- We believe that our hybrid skills are key to design and build digital platforms providing the best end-user experience
- We have a "3C" mindset :
Connected. Committed. Challengers.



TECH-DRIVEN COMPANY

- Our offerings are driven by technology and shaped by our Chief Technology Officer
- We keep tabs on the newest and most promising, new generation solutions to enhance end-user experience and client satisfaction
- We build proprietary assets and methods to help our clients succeed in their digital transformation programs

Where are we in the consulting landscape ?



Our values



Collaborate

Combine all our expertise to deliver the best and act as one team



Embody Authenticity

Act with honesty and integrity



Fuel Human Capital Growth

Bring diversified talents to light and help them grow



Build a Responsible Future

Contribute to move towards a more responsible business



irly

What we do ?

What are the main challenges of a corporate function ?



REDUCE RUNNING
COSTS



MAINTAIN
COMPLIANCE WITH
REGULATION



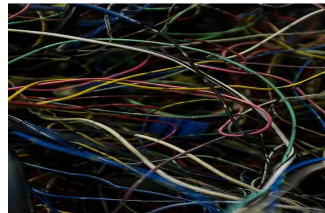
INCREASE DATA
QUALITY AND
UNLEASH VALUE
FROM NEW USES

We assist our clients to succeed in their end-to-end transformation

BUILD DIGITAL PLATFORMS



TRANSFORM ORGANIZATIONS & PROCESSES



DESIGN NEW BUSINESS MODELS



OUR MOTTOS...



FEDERATE A WHOLE ORGANISATION

Rely on collaborative methods to empower and generate acceptance from C-level to operational teams



TEST & LEARN

Test a solution on a small scope to demonstrate the value to scale



DELIVER VALUE AT KEY MILESTONES

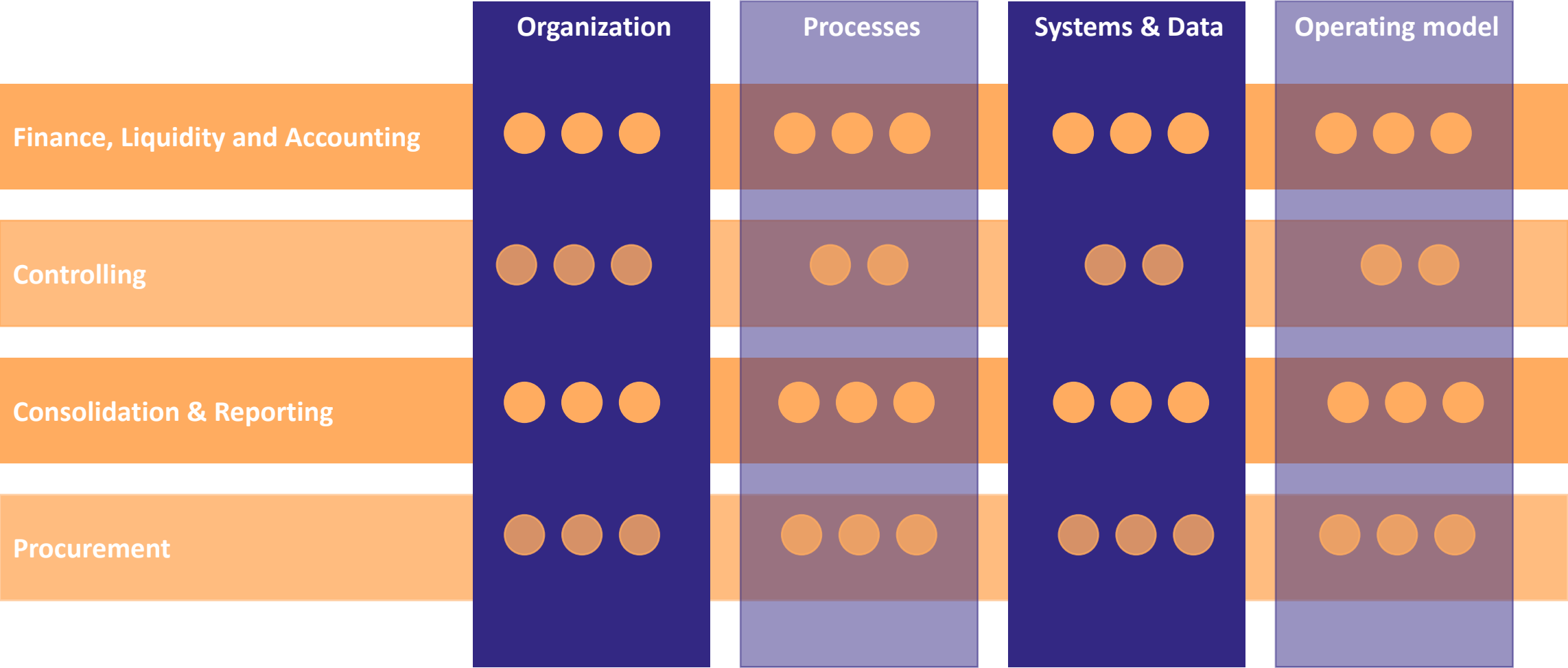
Build a well-balanced roadmap combining quick wins with long-term benefits



PROMOTE SUCCESES

Communicate on results to maintain the momentum and avoid a tunnel effect

Our as-is competencies in a nutshell



Our first partners



A Source-to-Pay Solution to digitize all procurement processes, manage all spend categories and improve transparency & master data quality



A cloud-based connected and reporting compliance platform that enables the use of connected data and automation of reporting across finance, accounting, risk, and compliance



A unified platform for analysis, simulation, and planning makes business decision-making more efficient and effective.



A cloud-based business intelligence (BI) platform designed to capture, explore and analyze data from multiple sources and make data-driven decisions.



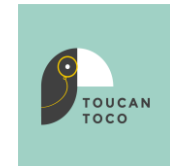
Beeline Vendor Management System that can fully automate your talent acquisition and contingent workforce management processes and help you make better workforce management decisions.



A modern and unified Platform to streamline Financial close, consolidation and reporting



. A single finance, HR, planning and analytics cloud system to have insights to guide your decisions



A reporting and data visualization solution that enables to unlock the value of your existing data with clear, compelling and collaborative data stories in record speed




irly

References

Our Irly references in a nutshell

				Nature of the program			Nature of the streams				Irly's signature
	CLIENT	OBJECTIVES	OUTCOMES	Transversal program	Pluriannual	International	Organization	Process	System	Data	Key expertise and methodology
DIGITAL TRANSFORMATION OF PROCUREMENT FUNCTION	BNP PARIBAS GROUP STRATEGIC SOURCING	<ul style="list-style-type: none">Digitalize the Source-To-Procure processEnhance the process and reduce payment delaysIncrease “spend” monitoring capabilities to fuel several initiatives of the 2022-2024 strategic plan	<ul style="list-style-type: none">Deployment of Core Model and OSS Solutions for France scopeRoadmap and Business case of the global deployment planned over 4 years	●○○	●●●	●●●	●○○	●●●	●●●	●●○	<ul style="list-style-type: none">Proprietary methodology combining test & learn principle, prototype & scale, pizza teams, UX/UI design tool, data quality “embedded”
SUPPLIER RISK ANALYSIS POC	BNP PARIBAS GROUP STRATEGIC SOURCING	<ul style="list-style-type: none">Prepare the target operating model for procurement function (2025)Test Ivalua solution to leverage on its Risk Center module to comply with TPRM regulation and rationalize the tools landscape	<ul style="list-style-type: none">POCHighlights for the projectTPRM processesScaling roadmap	●○○	●●○	●●●	●○○	●●○	●●●	●●○	
ANALYTICAL ACCOUNTING SOLUTION EMPOWERMENT	BNP PARIBAS FINANCE	<ul style="list-style-type: none">Implement new technologies for data repository and visualization ” to rationalize Finance IS, improve end-user experience, enhance data visualization performance and decrease run costs	<ul style="list-style-type: none">Business requirementsSolution deployment	●●○	●○○	●●●	●○○	●●○	●●●	●●●	<ul style="list-style-type: none">Market knowledge of reporting / data visualization digital solutions
REVISIT REPORTING CAPABILITIES THROUGH INNOVATIVE SOLUTIONS	BNP PARIBAS FRESH	<ul style="list-style-type: none">Explore innovative solutions to improve reporting capabilities on the risk and liquidity data scopes to improve analysis capabilities and enable users to design and adjust their own dashboardsDevelop a POC to prove the value	<ul style="list-style-type: none">Comparative analysis of innovative solutionsPrioritization of use casesPOC	●○○	●○○	●○○	●○○	●●○	●●●	●●●	<ul style="list-style-type: none">Collaborative workshopsMarket of reporting / data visualization digital solutions
		<ul style="list-style-type: none">Pivot the Finance function from figures factory to business partnerStreamline and optimize the IT landscape & architecture leveraging on new technologiesImprove IT evolution time to market	<ul style="list-style-type: none">Alignment of key stakeholder on a common visionTarget architectures of Finance, Risk, ALM-T functions	●●●	●●○	●●○	●○○	●●○	●●●	●●●	<ul style="list-style-type: none">Collaborative workshops cross-functionsCombined expertise (business & SI)
MASTER PLAN OF RISK, FINANCE & ALMT	BNP PARIBAS FRESH										



13

Our main previous experiences in large transformation programs ...

	CLIENT	OBJECTIVES	OUTCOMES	Nature of the program			Nature of the streams				Our signature
				Transversal program	Pluriannual	International	Organization	Process	System	Data	
BASEL II IMPLEMENTATION	CREDIT AGRICOLE CIB	<ul style="list-style-type: none"> Comply with Basel II requirements : set up the framework to calculate RWA according to internal methodologies Get the approval stamp from the regulator 	<ul style="list-style-type: none"> CACIB Basel II framework validated by the regulator (processes, systems, governance, RWA monitoring, data quality, ...) 	●●●	●●●	●●●	●●●	●●●	●●●	●●●	Key expertise and methodology <ul style="list-style-type: none"> A program organization deployed across the organization and close to business lines and IT A governance cross business lines and IT A close reporting to CA. s.a. A data quality stream from an early stage of the program Prototype to test before to scale
BASEL III IMPLEMENTATION (LIQUIDITY RATIOS)	CREDIT AGRICOLE CIB	<ul style="list-style-type: none"> Comply with Basel III requirements : set up the framework to calculate and report liquidity ratios 	<ul style="list-style-type: none"> ABLE go-live embedding data quality stream Arpège feeding New organization and new processes / governance articulated with as-is closing process 	●●●	●●●	●●●	●●●	●●●	●●●	●●●	
BASEL III IMPLEMENTATION (LIQUIDITY RATIOS)	BNP PARIBAS	<ul style="list-style-type: none"> Comply with Basel III requirements : set up the framework to calculate and report liquidity ratios 	<ul style="list-style-type: none"> Custom liquidity collection : calculation and reporting system across the group New organization and new processes / governance articulated with as-is closing process 	●●●	●●●	●●●	●●●	●●●	●●●	●●●	
FAST CLOSING	CREDIT AGRICOLE CIB	<ul style="list-style-type: none"> Reduce significantly the closing milestone to achieve J+35 at Group level (form J+60) 	<ul style="list-style-type: none"> New booking principles at back-office levels New guiding principles at finance and risk level Updated systems / processes and governance 	●●●	●●●	●●●	●●●	●●●	●○○	●○○	
BCBS 239 IMPLEMENTATION	BNP PARIBAS	<ul style="list-style-type: none"> Comply with BSBS239 regulation : set up a transformation and meaningful program across the group and set and Know Your Data culture 	<ul style="list-style-type: none"> New data framework across the group A finance & risk data repository 	●●●	●●●	●●●	●●●	●●●	●●●	●●●	

... and many others

**IT FINANCE ACTIVITIES
EXTERNALISATION**

CREDIT AGRICOLE CIB

**ALM SYSTEM
IMPLEMENTATION**

CREDIT AGRICOLE S.A.

**FINANCE SYSTEM
REDESIGN**

CREDIT AGRICOLE CIB

**“ZONE DE PARTAGE”
DESIGN**

CREDIT AGRICOLE S.A.

**FINANCE & RISK
TRANSFORMATION**

SOCIETE GENERALE

**FINANCE ACTIVITIES
NEARSHORING**

BNP PARIBAS FINANCE

A woman with dark hair, wearing a white blazer over a white top, is pointing her right index finger at a diagram drawn on a glass wall. The diagram consists of several boxes connected by lines, with some text inside the boxes, including the word 'TOST'. In the background, other people are visible working at desks with laptops. The entire image has a blue tint.

irly

Appendices

Our offerings



BUILD DIGITAL PLATFORMS



ALIGN

Design the digital roadmap, of support functions to unlock maximum value from new technologies

- Target Operating model
- Architecture
- Data framework



PROTOTYPE

Provide guidance to select the most appropriate digital solutions

- Voice of users
- Experience map
- Use Cases
- Prototype / Proof Of Concept



SCALE

Develop or co-develop digital platforms by implementing new technologies, adopting new ways of working and exploring new uses of data

- Minimum Viable Product
- Agile methodology
- Data quality / New uses
- New roles

Our offerings



TRANSFORM ORGANIZATION, PROCESSES & WORKFORCE



SHAPE

Redesign organizations to gain agility and optimize decision making

- Nearshoring / off-shoring
- Merging of entities
- Governance framework



DIGITALIZE

Streamline and automate processes to gain operational efficiency and enhance performance management

- Robotic process automation
- Performance improvement
- Disclosure management
- Fast closing



EMPOWER

Infuse an innovative culture and new ways of working

- Innovation Lab
- Design thinking
- Collaborative work
- Talent skillset evolution

Our offerings



DESIGN NEW BUSINESS MODELS



ORIGINATE

Shape and co-create new business models to generate new sources of revenues

- Competitive intelligence
- Feasibility opportunity
- Business case



DEVELOP

Leverage your know-how and your digital platforms to commercialize « as-a-service » solutions

- Target clients
- Operating model
- Pricing
- Skills set definition



COMMERCIALIZE

Design your marketing and commercial strategy

- Platform building
- Marketing strategy
- Sales strategy

Our references in detail



DIGITAL TRANSFORMATION OF PROCUREMENT FUNCTION - BNP PARIBAS

OBJECTIVES

- Digitalize the Source-To-Procure process and enhance the end-user experience
- Enhance the process and reduce payment delays
- Increase “spend” monitoring capabilities to fuel several initiatives of the 2022-2024 strategic plan
- Embody social responsibility and sustainability objectives

OUR APPROACH

- Build a Group standard core model for all businesses and entities (~300 entities) with specific local spaces
- Leverage on bots to connect Ivalua to external solutions dealing with complementary processes (Procure-2-P activation, time-tracking, dematerialization of contracts and invoices...)
- Enhance supplier risk management and strategic sourcing processes
- Conduct a feasibility study to set-up geographic hubs to mutualize operational activities

IRLY'S VALUE

- Co-develop an Ivalua S2P core-model with solution experts, Procurement team and users
- Set up a methodology to industrialize the deployments in the group
- Transform the organization and processes, and adapt the ways of working (business / IT, local / central)
- Lead the whole transformation program and report to all the stakeholders and C-suite



SUPPLIER RISK ANALYSIS MVP - BNP PARIBAS

OBJECTIVES

- Prepare the target operating model for procurement function (2025)
- Test Ivalua solution to leverage on its Risk Center module to :
 - comply with TPRM regulation
 - rationalize the tools landscape covering other suppliers' risks
- Design a scaling roadmap

OUR APPROACH

- Prepare a market view and trends of procurement of the future
- Establish a comparative catalog of market's solutions for all the processes
- Develop a minimum viable product (MVP) to test the promise and value of Ivalua Risk Center module leveraging Agile methodology
- Design the target operating model for procurement function and the execution roadmap

IRLY'S VALUE

- Provide insights to shape the procurement of the future
- Establish a benchmark of market solutions
- Bring Ivalua expertise and partnership to shape a BNP Paribas' tailored solution
- Set-up an agile and collaborative implementation methodology to foster adoption and facilitate business requirements definition

Our references in detail



ANALYTICAL ACCOUNTING SOLUTION EMPOWERMENT –

BNP PARIBAS

OBJECTIVES

- Implement new technologies for data repository and visualization” to :
 - Rationalize Finance IS
 - Decrease run costs
 - Unleash queries and data visualization performance
 - Improve end-users reports flexibility
 - Feed management accounting system with analytical accounting data

OUR APPROACH

- Analyze selected technologies (SAP IQ and Cognos) capabilities
- Consolidate and reshape end-user's requirements
- Build and test a “Proof of Concept”
- Industrialize the target solution
- Design and follow-up implementation roadmaps
- Define the Target Operating Model around the new solution

IRLY'S VALUE

- Bring finance & technology expertise
- Set-up a methodology to industrialize testing activities
- Lead the whole transformation program and report to all the stakeholders



REVISIT REPORTING CAPABILITIES THROUGH INNOVATIVE SOLUTIONS - BNP PARIBAS

OBJECTIVES

- Explore innovative solutions to improve reporting capabilities on the risk and liquidity data scopes :
 - Cover high volume of data
 - Connect to the different sources of data to be consolidated in “one place”
 - Improve analysis capabilities : drill-down, comments, simulation, audit trail, ...
 - Enable users to design and adjust their own dashboards
- Develop a Minimum Viable P to prove the value

OUR APPROACH

- Hold discovery workshops with some key end-users to present the solution and references
- Identify one or two relevant use cases
- Develop the MVP
- Assess the results to scale or pivot to another solution

IRLY'S VALUE

- Scan the innovative solutions' landscape
- Identify promising solutions with regards to BNP Paribas' context
- Connect BNP Paribas stakeholders with the soft providers
- Facilitate the discovery workshops and propose relevant uses cases
- Bring the solution expertise to co-develop the MVP

Our references in detail



**MASTER PLAN OF RISK,
FINANCE & ALMT –**
BNP PARIBAS

OUR APPROACH

- Design the finance target framework (technology and organization)
- Shape the roadmap and transformation stages
- Set up a common approach to gather all the parties around a shared transformation program

OBJECTIVES

- Pivot the Finance function from figures factory to business partner
- Streamline the IT landscape & architecture
- Integrate new technologies (big data, cloud, API)
- Improve IT evolution time to market
- Improve efficiency
- Explore new data opportunities / uses

IRLY'S VALUE

- Bring the expertise to design a target architecture and a 10-year roadmap
- Contribute to design the future of reporting and monitoring requirements & capabilities
- Facilitate C-level conversations and workshop



Let's switch on your future
together

About our founders



Lamyae Belhadri

 **FOUNDER**

lamyae.belhadri@irlyconsulting.com



Guillaume Jacquème

 **FOUNDER**

guillaume.jacqueme@irlyconsulting.com



Sébastien Troszczynski

 **CTO**

seb.troz@irlyconsulting.com



© 2021 Irly Limited.

All Rights Reserved

Registered on



EU IPO

OFFICE DE L'UNION EUROPÉENNE
POUR LA PROPRIÉTÉ INTELLECTUELLE