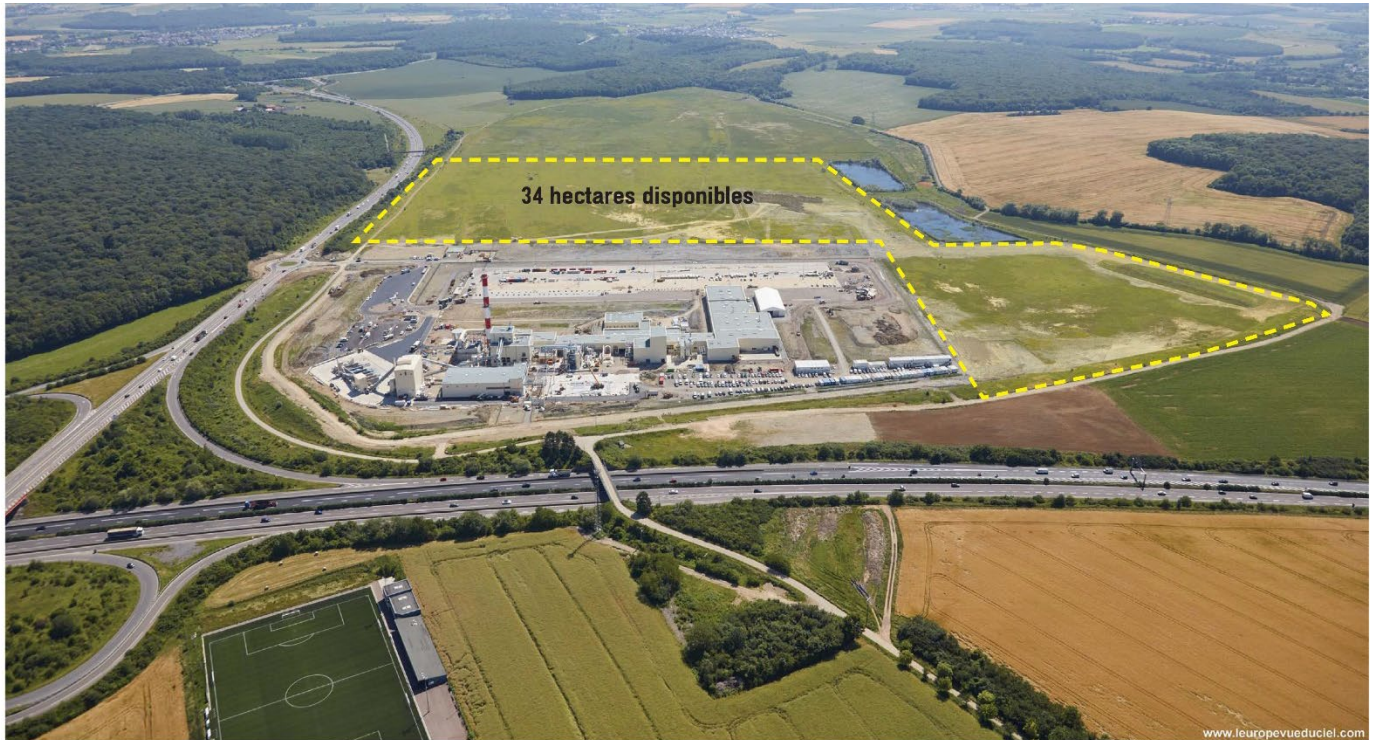


**ILLANGE – BERTRANGE**

**MOSL PARC**



**A rich economic environment: MAIN BUSINESSES IN THE SECTOR**

COMPANY NAME	LOCATION	BUSINESS	WORKFORCE
ARCELORMITTAL ATLANTIQUE ET LORRAINE	Florange	Steelmaking : flat products	2 203
EDF-CNPE	Cattenom	Nuclear electricity	1 395
THYSSEN KRUPP PRESTA FRANCE SAS	Florange	Vehicle steering columns	930
PIERBURG PUMP TECHNOLOGY FRANCE SARL	Basse-Ham	Oil and water pumps (automotive)	341
ZF LEMFOERDER METAL FRANCE	Florange	Vehicle safety parts	206
KS KOLBENSCHMIDT FRANCE	Basse-Ham	Pistons (automotive)	188
CMI MAINTENANCE EST	Thionville	Industrial piping	150
TECHNISONIC	Thionville	Industrial piping / non destructive testing	95
HERAEUS ELECTRO-NITE FRANCE	Illange	Temperature sensors	82
EXXELIA MAGNETICS	Illange	Electronic components	77
LORRAINE TUBES	Rettel	Large welded tubes	47
SOLOTRA-TRANSALLIANCE	Basse-Ham	Multi-customer platform	41
ARCELORMITTAL TAILORED BLANKS LORRAINE SAS	Uckange	Cutting / welding of vehicle panel blanks	20

## MOSELLE, A STRATEGIC GEOGRAPHICAL POSITION IN EUROPE

> The Moselle department in Lorraine occupies a privileged cross-border position.

> It is an exceptional gateway to the major European markets.

> Moselle: a population of more than a million in a market of 400 million consumers, with 50 % of European GDP within a 600 km radius.

## A UNRIVALLED HUB LOCATED IN AREA WITH HIGH-QUALITY LABOUR FORCES

### Thionville employment area

Population:	500 000
Density (pop/sq. km):	244
Active employed population:	200 000

The Moselle labour force is young (more than one third of the population is under 25) and its hardworking attitude is recognized both in France and abroad. The long industrial tradition of the region means that the labour force is used to factory work, operational very rapidly and familiar with shift work.

The Illange-Bertrange megazone is also near the 450 ha Ennery-Trémery logistics hub.

An attractive area with excellent infrastructure: the department council has supervised the building of the Moselle broadband network (RHD 57). Its 1,130 km of very high speed (15 megabit to 40 gigabit) optical fibres mean that the whole of Moselle benefits from high-performance telecommunications infrastructure and services.

## A MEGAZONE WITH EXCELLENT COMMUNICATION INFRASTRUCTURE

### Road links

> The megazone is located close to major motorway interchanges providing access to Luxembourg, Belgium and northern Germany.

> The A4 and A31 motorways provide rapid access to Paris, Lyon and Marseille.

### Air links

> The megazone is less than half an hour away from large airport as Luxembourg-Findel.

> Close to major international airports such as Brussels, Paris and Frankfurt.

Freight can be shipped by Cargolux from Luxembourg Findel or from Hahn in Germany.

### Rail links

The TGV EASTEUROPEAN high-speed train links four European countries: France, Germany, Switzerland and Luxembourg. With 12 TGV stations in Lorraine (including 3 in Moselle near the megazone: Metz, Thionville and Forbach), and a 20 % increase in regional express services, eastern France is opening up to the rest of France and to Europe.

## TECHNICAL INFORMATION

### Site details

Rectangular site, graded; no structure on the site. Land ownership under full control of the Moselle department.

### Location - road and rail access

> Location close to a motorway interchange: direct link via the Yutz south-eastern bypass to a junction on the A31 motorway.

> Rail access: branch planned from Kuntzig station.

### Water/sewage infrastructure

> **Rainwater:** 2 retention basins, each 21,000 m<sup>3</sup>, are being built to limit the runoff flow rate into the Thilbach stream to 200 l/s.

> **Wastewater:** construction of a sewer system-wastewater treatment in the Guénange intermunicipal treatment plant.

> **Industrial water:** to be treated on site by the company and specific network to be installed for discharge into the Moselle.

> **Drinking water supply:** water supply by the local water management body. The quantity and quality of domestic water are guaranteed by a 300 mm steel pipe passing close to the site. Available pressure: 13 bar availability of 150 m<sup>3</sup>/day with a peak flow rate of 6 l/second.

> **Firefighting:** 500 m<sup>2</sup> reservoir to be built at the high point to supply the fire hydrants for 2 h at 60 m<sup>3</sup>/h (increase if necessary according to the specific needs of the business).

### Dry services infrastructure

> **Electricity:** 2 x 225 kV line at the site boundary. To be installed: 63 kV transmission line from the Saint Aubert-Reinange line (3 km) and a 63 kV/20 kV transformer station.

> **Gas:** installation of a gas pipe (pressure 4 bar), including a regulator station to be built.

> **Telephone:** site supply from the existing network along the RD1 road.

> **Optical fibre:** connection to the main backbone (broad-band network, 15 megabits to 40 gigabits).