

Caiman

BIO-INSPIRED INTELLIGENT CAMERA

The Caiman camera is an intelligent, autonomous and low-power sensor based on a bio-inspired model. This camera, like the human eye, can detect and extract the relevant characteristics of the observed scene.



Intelligent

At the cutting edge of technology, the Caiman camera provides an operational response for object detection and recognition.



Innovative

Thanks to its design inspired by the functioning of the brain, the processing of the data embedded in the camera mainly concerns the relevant information contained in the image. The amount of data to be processed is massively reduced compared to standard solutions.



Autonomous

The Caiman camera does not need to be connected to the 4G network (cloud), the detection, processing and transmission of results are embedded.

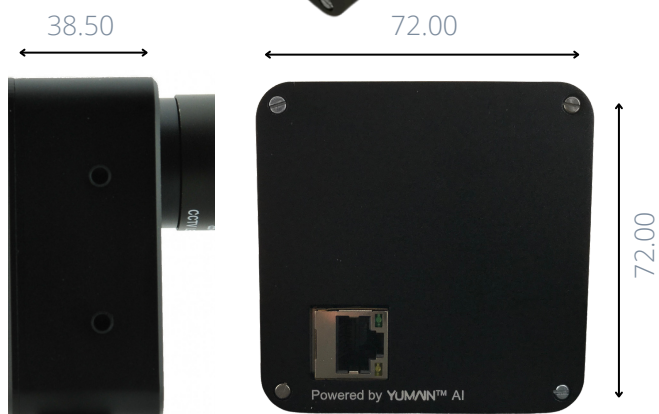


PRINCIPLE OF OUR SOLUTION

- Image acquisition and processing from a 1920 x 1080 sensor @50fps
- Eliminates 90% of irrelevant data
- Easy set-up, operation and acquisition through a user interface
- Fast interface (via user API)
- Image rights compliance with the ability to cut off the video stream

CONNECTION, MOUNTING

- Small size case
- Compact size 72 x 72 x 38.5 mm
- M3 (front) and M4 (sides) threaded mounting
- Low power consumption
- Ethernet communication



CHARACTERISTICS CAIMAN

Video sensor specifications

- Cs lens mount (C compatible with the supplied optical ring)
- Resolution : 1920 x 1080
- Frame rate: 50 fps

Communication features

- Ethernet connection
- Connection standard: GigaBit ethernet - 1000 Base TX

GUI Features

- Language and libraries: C++, Qt5
- OS:
- Windows 10
- Ubuntu 18.04
- API: Proprietary

Supply voltage

- 48 VAC via POE

Power draw

- 2W

General Characteristics

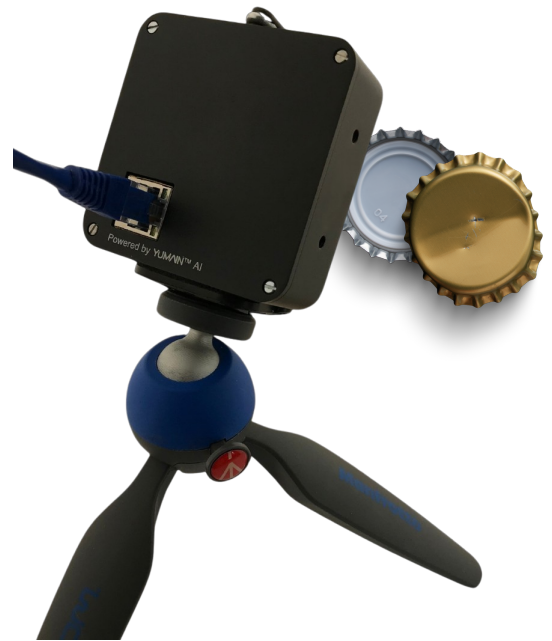
- Power connector : RJ45
- Communication connector : RJ45 connector
- Weight : 230 g
- Dimensions : 72 mm x 72 mm x 38,5 mm

Due to changes in standards and equipment, the characteristics given in the text and images in this document are only binding after confirmation by our services.

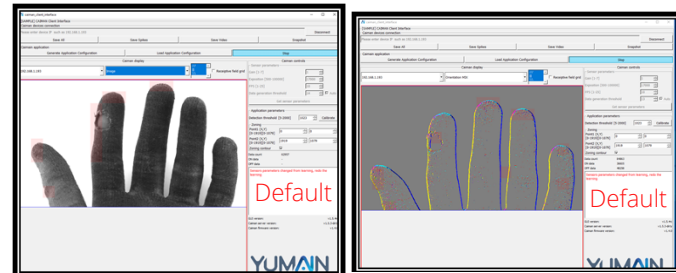
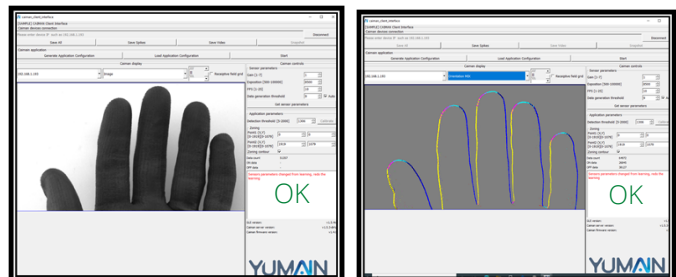


Yumain SAS
14H rue Pierre de Coubertin
21000 Dijon
Tel: 03.80.37.17.95

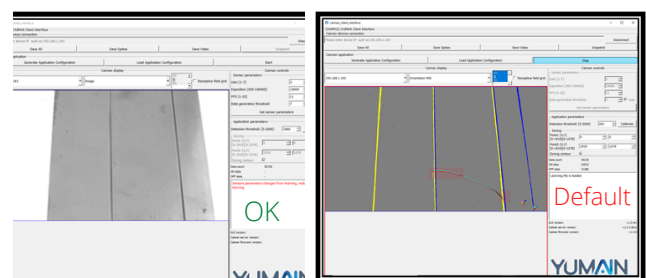
POSSIBLE APPLICATIONS



QUALITY CONTROL - INSPECTION OF ITEM



QUALITY CONTROL - SURFACE INSPECTION



YUMAIN
Sensing & Predictive AI

www.yumain.fr