



Make BIM financially and technically accessible





WiseBIM is an **online software** editor specialized in **Artificial Intelligence** for BIM



Founded in 2017



Deep Tech from French Research - CEA



13 collaborators



+50 clients

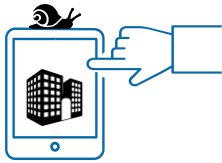


Paris - Station F
Chambéry Technolac



20 awards





Digitalizing existing assets into BIM is **too slow** and **too expensive**

... while it becomes essential for maintenance, renovation, energy optimization, smart buildings, ...

Our competitors

Current solutions

3D point clouds obtain using laser scan on site

Disadvantage: **expensive and not BIM**

Manual transformation - 2D plans or point clouds- using BIM editor software

Disadvantage: **time consuming**





WiseBIM is the one and only player in the market developing **Artificial Intelligence** solutions to automatically generate 3D BIM models from existing 2D plans

We develop **online software** (SaaS) to make it accessible worldwide

We make these technologies **interoperable** and **easy to use** to address the largest user segment

Automatic generation of 3D/BIM models from 2D plans thanks to Artificial Intelligence

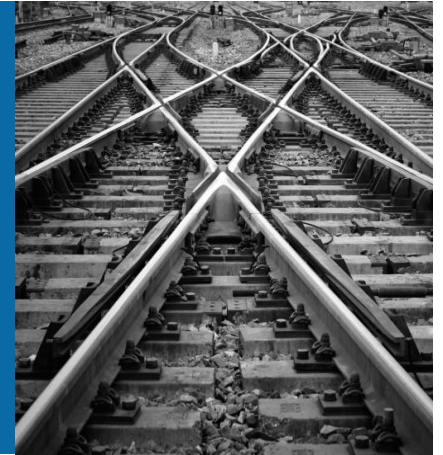
Buildings

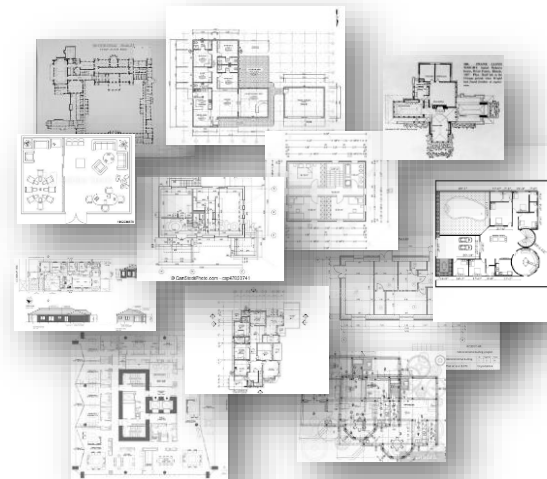
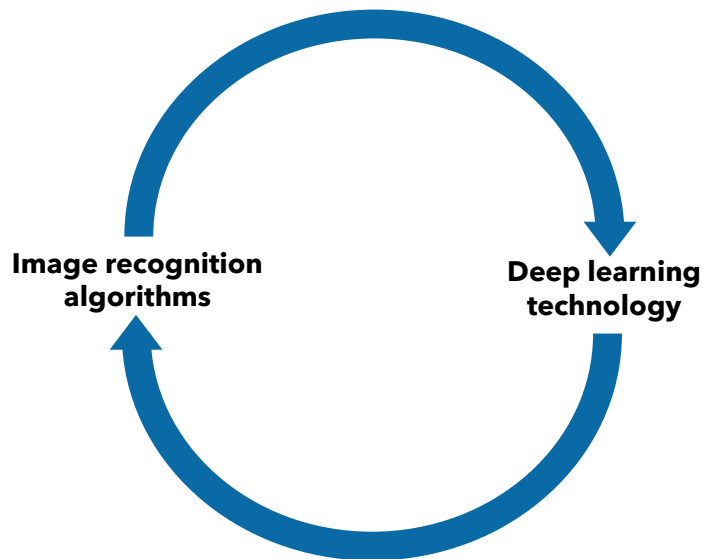
- residential
- industrial
- commercial
- institutional
- ...



Infrastructures

- underground networks
- railways
- roads & highways
- ...







Modelization of existing buildings and infrastructures

Our markets

- management - operation - maintenance
- renovation
- smart building
- dismantling

Our Customers



Engineering
offices



Architects



Construction
companies



Owners



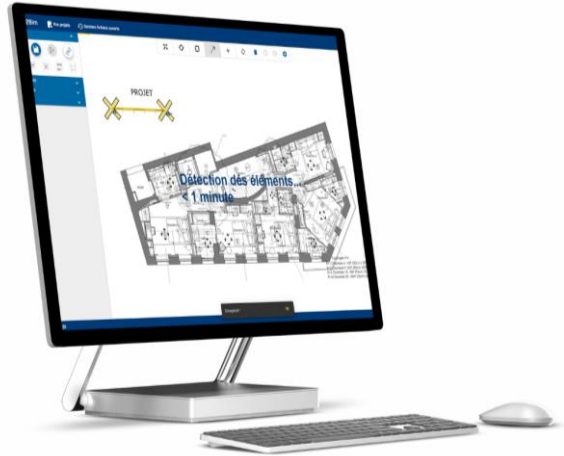
plans2bim

<https://plans2bim.com>



Enable modelers to **quickly** transform **online** their 2D plans into BIM

- collaborative data platform
- input data: image formats
- fast recognition thanks to AI
- editor to correct and enrich the model
- assembly of floors
- takeoffs of surfaces, volumes and quantities
- output data: openBIM format

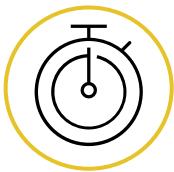


plans2bim

<https://plans2bim.com>

Demonstration

Multiple benefits



Considerable
time saving



High quality IFC
files



No need to go
on site



Compatible
with your BIM
software



Easy to use



Plans2BIM allows our customers to

- Reduce drastically their costs
- *Address a larger market share*

« Plans2BIM allows us to **save up to 50%** of modeling time »



Philippe Durand, Deputy CEO



Grid2BIM

<https://grid2bim.com/>

Enable modelers to **quickly** transform **online** underground network plans into compatible 3D formats

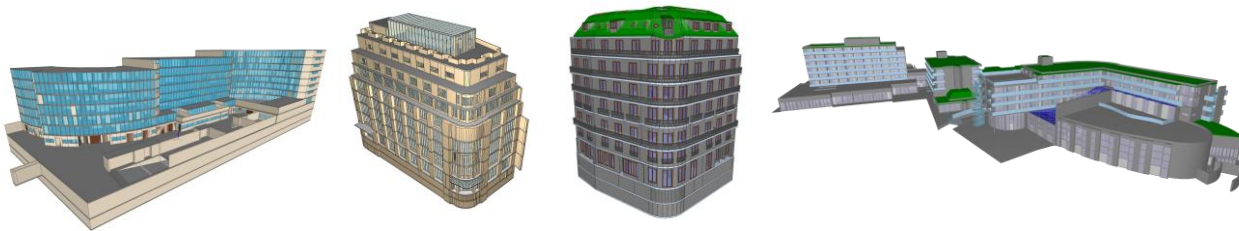


- fast modeling of networks
- merge several network plans
- integration of the topography
- representation of the network class

A solution developed with




WiseBIM also offers to model your buildings in BIM from your architectural plans



- 5 000 m2/day/operator
- no need to go on site
- high quality, open and interoperable IFC files
- respect of BIM guidelines: guarantee of integration in your CMMS/GTB tools
- enrichments on request



SNCF Réseau and WiseBIM collaborate to model railway infrastructures in BIM from 2D plans

- ◇ An Artificial Intelligence tool has been specially developed to generate 3D/BIM digital models from existing network plans
- ◇ The structures (roads, embankments, hydraulic drains, manholes, etc.) are recognized with the aid of machine learning models of the Deep Learning type
- ◇ The Paris-Marseille line (700 km) is currently entirely modeled thanks to this technology 



Contact: Tristan GARCIA, CEO
tristan.garcia@wisebim.fr
+33.678.236.428

