

The Current Mistake: Viewing Urine as Waste

With conventional
urinals or toilets.



6 LITERS

of contaminated drinkable water!
at every flush



NITROGEN • PHOSPHORUS • POTASSIUM

Nutrients essential
to agriculture wasted...

A very heavy treatment of urine,
for wastewater treatment plants. It represents :

80% nitrogen rejection

50% potassium rejection

20% of drinkable water
goes into the toilets.



And meanwhile...
Fertilizers from non-renewable resources
mining and imported from other continents.

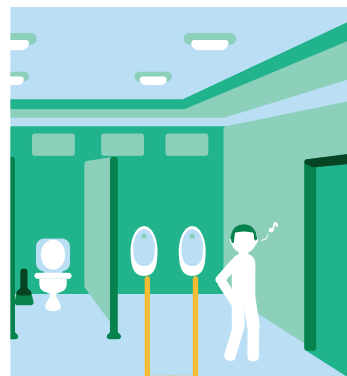


In parallel of a
**Pollution by widespread
eutrophication of ecosystems**

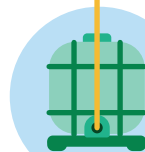
The Toopi Organics solution : Transforming urine into a ressource



With waterless urinals:



Human urine is
an unlimited resource
with great potential.



Collection
via tanks

at 150 km maximum
from the collection point...

CLOSING THE NUTRIENT CYCLE



Processing
Unit

In short circuit
A low-tech process
Without any waste



1 liter
of urine

=



1 liter of
fertilizer



Waterways preserved
and soils revitalized



Huge potential!

at European level:

6000



200

billion liters of drinking water
saved per year

billion liters of
urine recovered



At the service of sustainable and resilient agriculture