

# eOdyn solutions

We support marine industry and research by providing ocean surface current measurements according to specific needs. Through a variety of products and services, eOdyn provides the largest planetary ocean surface current data set. Our technology transforms any vessel into an ocean current sensor, dramatically increasing the number of available measurements.

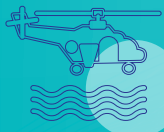
Support to:



**OFFSHORE OPERATIONS**



**SHIP ROUTING**



**SEARCH AND RESCUE**



**ACADEMIC RESEARCH ETC.**

Graphic Design: severinechaussy.com



Watch the video

They trust our data :



**THALES**  
Building a future we can all trust



Ask for a demo: [contact@eodyn.com](mailto:contact@eodyn.com)

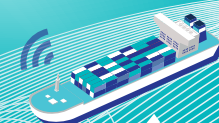
**eOdyn**  
*Ocean in motion*

115, rue Claude Chappe 29280 PLOUZANE - FRANCE  
+33 (0) 6 51 23 99 26 - [contact@eodyn.com](mailto:contact@eodyn.com) - [www.eodyn.com](http://www.eodyn.com)

# In situ Ocean Surface Currents Anytime, in every ocean

"WHY INSTALL SENSORS ABOARD, WHEN THE SHIP  
ITSELF CAN BE THE SENSOR?"

**eOdyn**  
*Ocean in motion*



Ask for a demo: [contact@eodyn.com](mailto:contact@eodyn.com)





## Custom and cloud solutions

EODYN OFFERS DATA DELIVERY OPTIONS FOR ALL BRANCHES OF MARINE INDUSTRY:

Raw surface current data provided in any format, e.g., **NetCDF**, **ArcInfo**, **Grib**, **Ascii**, etc. eOdyn is currently developing highly flexible software tools that can be adapted to fit your needs.

eOdyn provides near real-time custom maps using normalized web technologies such as **WMS** and **OPeNDAP**.

## Planetary ocean surface current data set

THANKS TO ITS PATENTED OMNI-SITU TECHNOLOGY, EODYN PROVIDES IN SITU OCEAN SURFACE CURRENT MEASUREMENTS FROM EVERY OCEAN, AT ANY TIME.

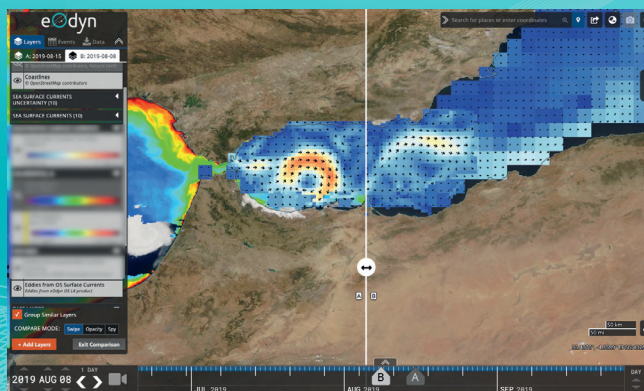
Our data services provide flexible access to in situ ocean surface current measurements thanks to the **AIS (Automatic Identification System)**. Through the use of our **Omni-Situ technology**, we are able to provide the most extensive global in situ current data set for both coastal and open ocean areas. Our technology transforms any vessel into a surface current sensor. Ocean surface current measurements as a service has now become a reality thanks to our **SeaOps platform**.

### ADVANTAGES

- > GLOBAL COVERAGE
- > HIGH SPATIAL AND TEMPORAL RESOLUTION
- > NEAR REAL-TIME DATA
- > WORLDWIDE HISTORICAL DATA ARCHIVE
- > NO SYSTEM TO DEPLOY

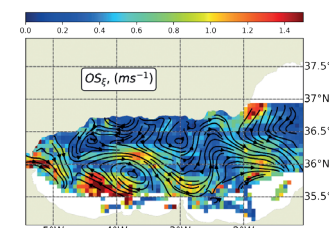
### SEAOPS PLATFORM

**Eddies** observed in the Alboran sea thanks to **SeaOps platform** and the **Omni-Situ** patented technology.

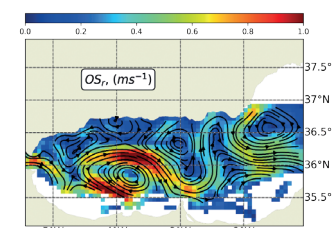


## The digital revolution is modifying our perception of ocean dynamics

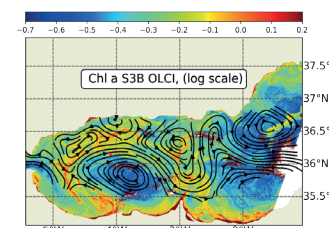
UNPRECEDENTED COVERAGE, RESOLUTION AND PRECISION



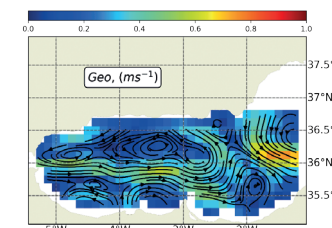
eOdyn Omni-Situ (OS) total current (including tide- and wind induced) in the Alboran sea.



Rotational component of OS current (OS<sub>r</sub>).



Map of OS<sub>r</sub> streamlines and Chlorophyll-A concentration.



AVISO geostrophic surface current.

STREAMLINES ARE WELL CORRELATED TO **CHLOROPHYLL-A CONCENTRATIONS** AND SHOW ADDITIONAL STRUCTURES WHEN COMPARED TO ALTIMETRY.



WE PROVIDE GLOBAL IN-SITU OCEAN SURFACE CURRENT DATA HOW CAN WE HELP YOU?