



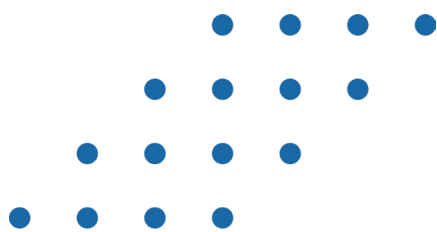
YULCOM
Technologies

TAILOR-MADE COMPUTER ENGINEERING SERVICE

www.yulcom-technologies.com



Our offices



YULCOM, founded in Montréal in 2009, offers you personalized and innovative solutions. We continually invest in developing the skills of our ICT professionals to provide you with the best level of expertise available on the market.



4

Continents

12

Countries

+50

Partners

+120

Team members

Belgium

Niger

Burkina Faso

Benin

Togo



Our services



Web & Mobile
Development



Cloud Hosting



Big Data &
Artificial Intelligence



IT Project
Management

Our main products in Europe

E-Learning

Big-Data

Artificial
Intelligence

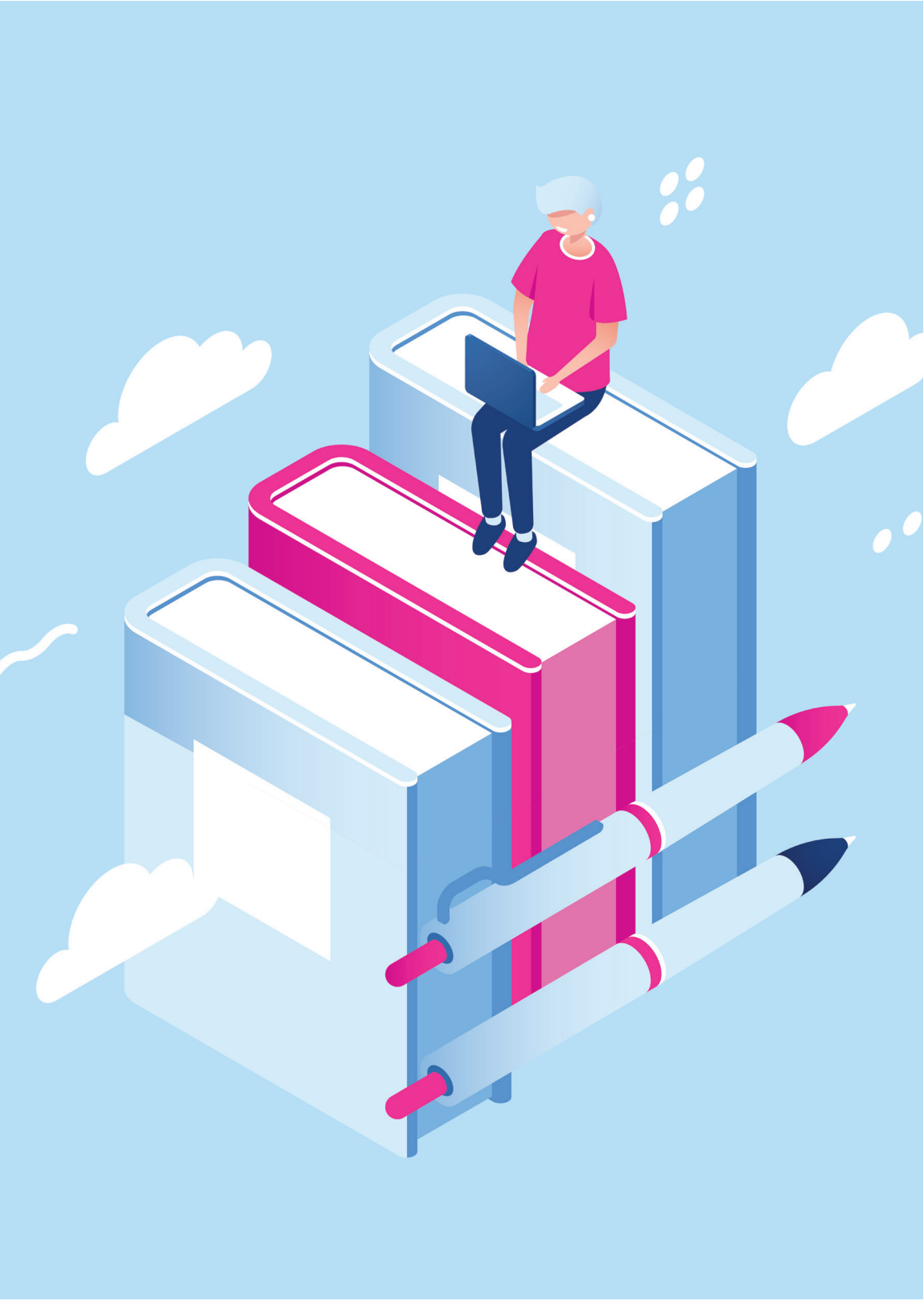
Custom Web
Development






E-LEARNING EXPERTISE

- Develop E-learning and LMS solutions
 - Integrate ERP for education
 - Create custom web and mobile platforms
 - Software integration
 - Develop digital strategies
- 

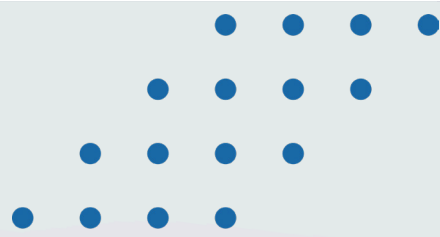




BIG DATA

- We help you to implement a data-driven strategy
 - Optimizes the work processes
 - Reduces costs
 - Improves customer satisfaction
- 

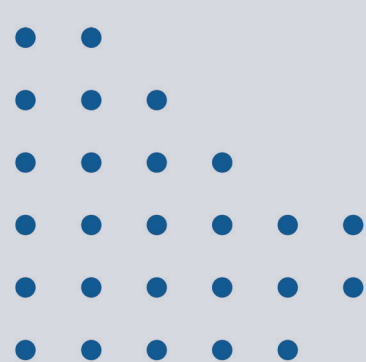




ARTIFICIAL INTELLIGENCE



- Support in the development of tailor-made business applications
- Improvement of the performance of a business
- Simplifies tasks
- Automates business processes



CUSTOM WEB DEVELOPMENT

- E-commerce applications
- Entertainment applications
- Directory applications
- Events applications
- Media applications
- Website with responsive designs

Our clients



UQÀM





Our Approach

- A structured approach to help transform organizations
- ITIL, Lean, Green IT, ...
- Finding pain points
- Help implement solutions
- Goal is to improve our customers' performance
- We aim to achieve the desired performance



Our Solution



Assessing



Carrying out



Developing



Delivering



Evaluating

Avenue Louise 523, 1050 Brussels,
Belgium

(+32) 02 335 12 01
belgique@yulcom-technologies.com
www.yulcom-technologies.com

General manager:

Jennifer Moriconi

mjennifer@yulcom.eu
+32 487 64 07 96

