



Cyber Evolution srl

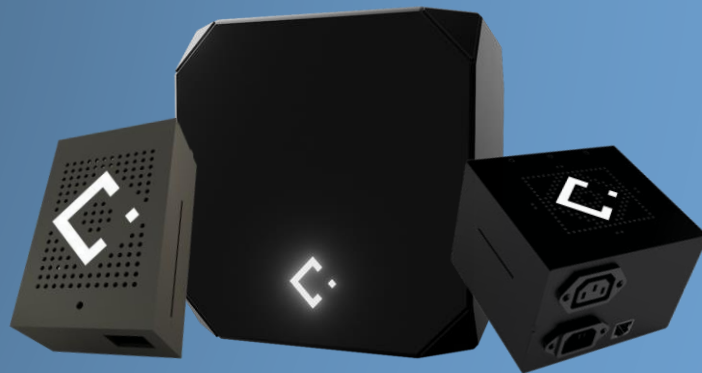
Via Erasmo Mari 55, Ascoli Piceno

Contact

+39 0736 261444

info@cyberevolution.it

www.cyberevolution.it



Last Electrical Cyber Security

# The Company



Cyber Evolution is an innovative start-up that works on the **Security Fields OT, IoT, and IT**, offering **both hardware and software network security solutions** for SMB and Government.

We believe in the accessibility of **network security for everyone**, implementing innovative solutions the fastest way possible:

For this mission we created **LECS, the first WorldWide Plug&Play security appliance** that ensures the safeguard of every type of LAN and connected devices.



Cyber Security Consulting and related fulfillments of GDPR

Thanks to our certifications we are able to do tests and consulting on high level networks



Network planning and review, Backup systems and services.

We offer services on net-structures and we plan backup systems and VPN



Security monitoring via Centralized Operation Center

We manage and control an'operation center (SOC) that monitors and analyze in real time the LOGS of every affiliates



ITSecurity field instruction and risk evaluation

We offer and perform active tests on personnel in order to limit errors caused by lack of experience in cyber security

**Some  
Numbers:**

**+100** SMB/  
and big companies  
as clients

**2018** Year of  
foundation

**1** Patent granted  
And **1** International

# Problems in Security Field



## **There are no risk-free companies.**

Due to the fact that modern business has a net-dependent nature, hackers tend to attack smaller businesses in order to arrive to their bigger partners and clients.

Big societies now pretend from every client and partner, even if small as a business, the use of some sort of cyber security measure.

## **THE CAUSE**

### **THE LACK OF CYBER SECURITY SOLUTIONS IMPLEMENTATIONS IN SMB, COMPANIES AND PLANNING OFFICES..**



**Lack of qualified staff**



**High management and  
implementation costs**



**Presence of weak points.**

# Problems in Security Fields



## Attacks and cyber threats are more frequent than ever.

In 2020, the year of pandemic, lockdown and smart working, cybersecurity has been put to the test, reaching the highest number of attacks ever recorded. The "Rapporto Clusit 2021 sulla sicurezza ICT in Italia" notes that globally in the last year there were 1,871 serious attacks (in the public domain), a figure that made the index jump to +12% compared to 2019 and to +66% the number of serious attacks compared to 2017.

## WHAT ARE THE CONSEQUENCE?

Massive economic damage to all companies of all sizes and field.



### Costs due to loss of business

Revenue shrinkage, increased costs associated with customer acquisitions and loss of reputation



### Detection & escalation costs

costs of investigative and forensic activities, organization of the incident response team, costs of Audit & Assessment services



### Local damage and info gathering

mail, credit cards, victim and regulatory notification costs

# Our Security Innovation



Last Electrical Cyber Security

**LECS is an innovative Plug & Play** cyber security device that protects any LAN network with a patented countermeasure system.

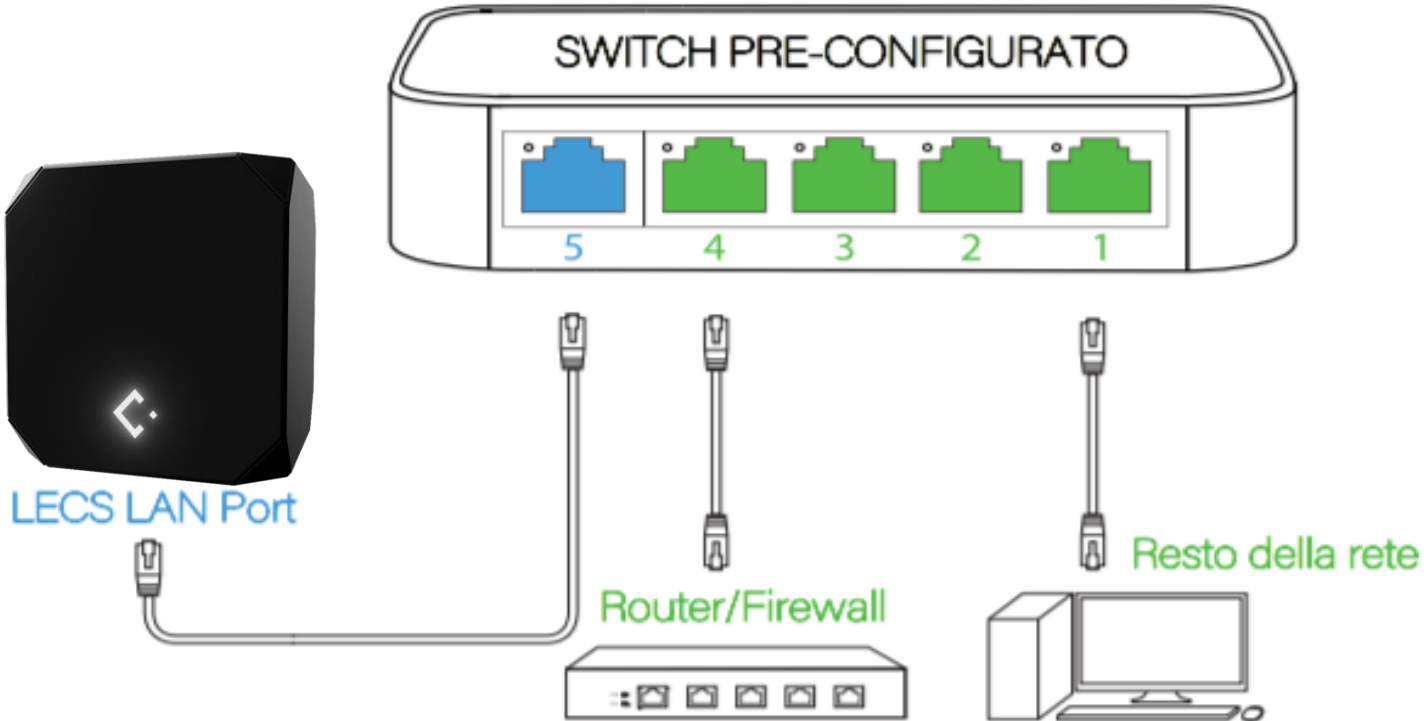
**It analyzes traffic**, internal movements, and what comes from outside and **once an anomaly is detected, it classifies it and acts according to the degree of severity.**

In case the threat is dangerous for your data, **LECS intervenes progressively** through a particular patented procedure that aims to block the threat.

**All the logs generated by LECS are managed and stored inside the Web App** that keeps track of what happens in the network and periodically sends reports on the network health status.



# Plug and Play



# How it works



Network Data Stream



## TRAP & DETECTION ANALYSIS

- **Strategic active/passive network trap/honeypot**, confused with hosts
- **Real-time threat analysis** from within the network
- **Classification based on severity** of impact on the network
- **Long-term LOG store** and monitoring statistics



## ISOLATION RESPONSE

In case of high impact threat the disconnection motor intervenes

- Energetic - Physical L1 OSI, according to **patented procedure**.
- Procedural - Link L2, 3 OSI, according to **patented procedure**.

Immediate **alert notification** via email/app

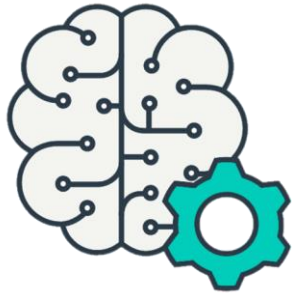


## CHECK & RECOVERY

- **Restores** network connection
- **Checks** for additional threats
- **Machine Learning** and Cloud Parameterization

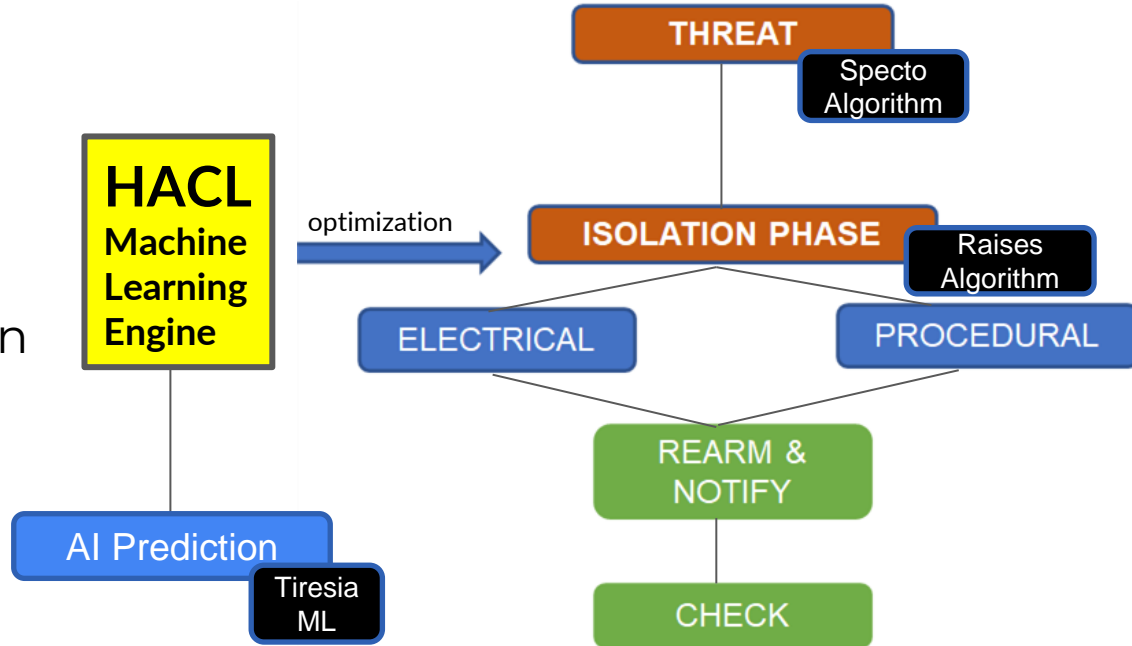
# Patented Technology

Property patented technology based on HACL system



## HACL

Honeypot  
Analysis  
Classification  
Logging



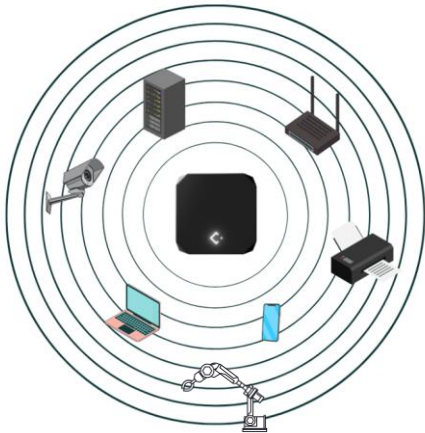


# Utilities



## It protects the lan and everything that's connected

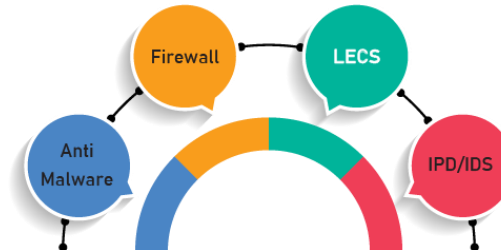
It protects any kind of network and node type, supporting protocols of IoT Devices, Industrial-IoT, Servers, Cameras, Desktops, Mobile OS, etc.



## Improves the network security performances

LECS can be used either in stand-alone mode or complementary to other systems.

It works passively and in parallel, without creating slowdowns or blockages.



## 100% stealth device GDPR compliance

LECS defends your network from internal and external threats while ensuring maximum privacy as it only passively monitors traffic.

It protects data as required by ISO certifications and in compliance with GDPR regulations.



# Specifics and supported network protocols



## Technical Specifications

**Processor:** Quadcore 64 bit

**Memory:** 2 to 8 GB RAM

**Memory drives:** 32 to 256 GB log storage

**LAN Port Connectors:** Gigabit Ethernet

**Number of LAN ports:** 1

**LAN Speed:** 10 / 100 / 1000 Mb

**Bandwidth:** >900 Mbps

**Power Consumption:** < 10Watts

## Network Protocols

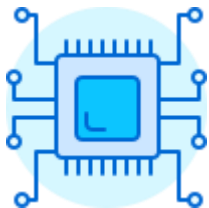
Lecs supports and acts on all major network protocols, including :

IPv4, IPv6, TCP, UDP, SCTP,  
ICMPv4, ICMPv6, GRE  
Ethernet, PPP, PPPoE, Raw, SLL,  
VLAN, QINQ, MPLS, ERSPAN,  
VXLAN, Geneve  
HTTP, HTTP/2, SSL, TLS, SMB,  
DCERPC, SMTP, FTP, SSH, DNS,  
Modbus, ENIP/CIP, DNP3, NFS,  
NTP, DHCP, TFTP, KRB5, IKEv2,  
SIP, SNMP, RDP, RFB, MQTT...

# Differences between LECS and other security solutions

Caratteristiche	LECS	Antivirus	Firewall	IPS
Plug & Play	✓	✗	✗	✗
Energetic World unique countermeasures	✓	✗	✗	✗
Actively protect device such IoT ed Ind .IoT	✓	✗	✓	✓
Full stealth approach	✓	✗	✗	✓
Physical LOG storage – Blackbox approach	✓	-	✗	✗
Internal and innovative POV-type protection	✓	-	✓	✓
Parallel installation, no pass-thru	✓	-	✗	✓
Zero tech know-how for maintaining	✓	✓	✗	✗

# Advantages



**Plug and Play approach**, also useful for all companies that do not have security managers in charge.

**Efficient and universal countermeasure** as it creates an automatic AIR GAP defense.



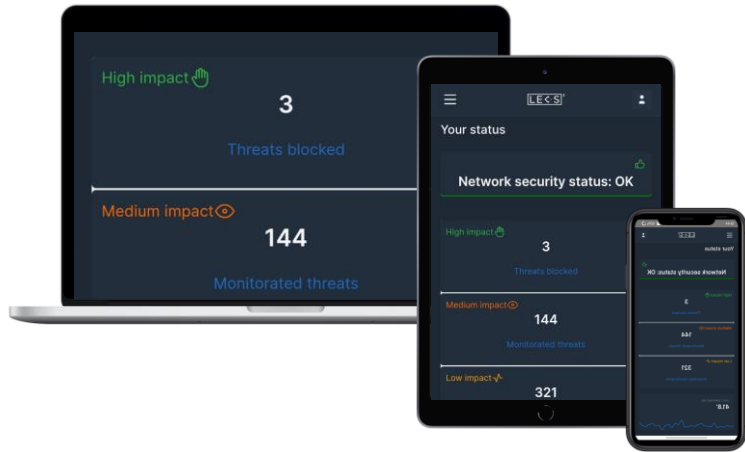
**It protects all the devices**, such as smartphones, PCs and tablets but also the devices currently not protected as smart TV, cameras, RT cash registers, etc.

**Extended LOG archive always available** for the monitoring of the activity history on the network and for the implementation of pre and post infection operations.



**Passive device**, it doesn't interfere with the rest of the network, excellent also for those who have complex networks.

# LECS Analytics



**Gain a deeper understanding of threats and anomalies in your network.**

**LECS Analytics** offers, through a **web app** and a **dedicated app\***, all the tools you need to analyze the state of your network:

**Analyze and monitor LOGs**

**Manage all threat types, from type 1 to type 3**

**Receive a weekly dedicated report on the security of your network**

\*app only available for android

# LECS Versions

LECS

**RETAIL &  
SMART**

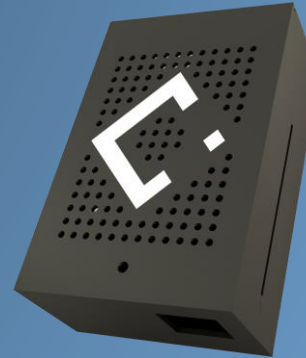


- Plug & Play
- n. 10 Client / Protected Nodes
- Procedural countermeasure
- Compact design

**SUGGESTED FOR:**

Retail, Smart home, Micro Office

LECS



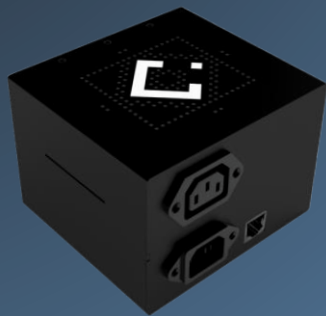
- Plug & Play
- n. 30 Client / Protected Nodes
- Procedural countermeasure
- Compact design with an aluminium case

**SUGGESTED FOR:**

PMI, Freelancers, Office, P.A.

# Versioni LECS

LECS +



- Plug & Play  
n. 100 Client  
/Protected Nodes
- Energetic  
countermeasure
- Support for industrial  
protocols

## SUGGESTED FOR:

Companies, Government., Industry  
4.0

LECS Industrial



- Energetic and  
procedural  
countermeasure
- Designed for Racks  
or Embedded  
systems
- Customizable

## SUGGESTED FOR:

Industriy 4.0 and System Integrator

# VIRTUAL LECS



VIRTUAL



Home/Personal  
SaaS

Virtualized and  
procedural version.  
Available on servers or  
clients

COMING SOON Q3/ 2022



# Cyber Evolution

Services and LECS



# Annual fee & LECS Analytics



**Annual updating** license  
pack include firmware and  
feature about ML detection

# Check & Assessment



Making data secure and redundant is one of the best strategies to implement **for securing an ecosystem**. This is because **it avoids all the problems of recovery and costs resulting from a loss** and also allows you to comply with **GDPR/16 and the various ISO certifications**.

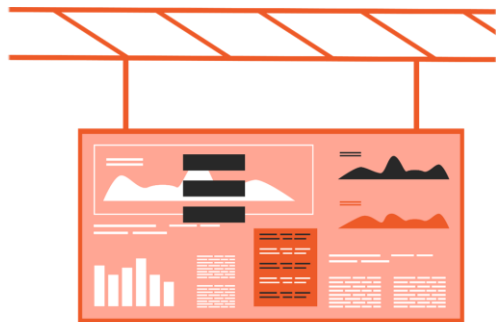
For this reason **we make assessments dedicated to customers**, so they are protected effectively and regardless of the type of data and quantity, even in the case of **offices or SB located on physically distant networks**, thus providing all the advice and ICT services needed.

## Check & Assessment Pack



- Online check of the network and the adopted security system
- Cyber Security test and identification of possible criticalities
- Consulting on security system and architecture to be adopted
- Assessment of network and IoT devices
- Supply of n. 1 device included LECS plus  
+ 1 year free LECS Insight
- Customized LECS device configuration
- n. 1 hour of training and education to the IT technical staff

# LECS Security Operation Center



Our **Security Operation Center** is constantly **researching and monitoring cyber threats**. In addition to being the core security operation center, it also handles **remote management and defense for our customers**. This means that we take care of your security, from A to Z.

In fact, with the service of SoC, **we perform LOG reviews, perform special tests and monitor the systems of remote customers**, in order to verify any hidden threats to automated systems.

We also issue **periodic, easy-to-follow reports** that demonstrate any flaws detected, status and remediation performed.

We guarantee maximum efficiency thanks **to certified professionals and multidisciplinary teams** that, through the use of integrated and advanced technological platforms, identify the assets to be protected, assess and manage risks, detect threats and respond to incidents.



# LECS SoC - Security Operations Center



- **1 year of Human review** of LOGs, carried out by our Certified Blue Team
- **1 year of active Advising** in case of anomalies detected by the team via email and telephone
- **1 year package of Support, Consulting and Training** for n. 9/18/36 hours:

## THI Silver Service

9 hours annual Support/Consulting/Training service

## THI Gold Service

18 hours per year Support/Consulting/Training Service

## THI Platinum Service

36 hours per year Support/Advisory/Training Service



# Percorsi di formazione



The first link in the security implementation is undoubtedly the workforce. **The user is often the initial target of any attack of high severity**, as it is more easily exposed than complex security systems, and this in both SMEs and Public Administrations, industries, studios, laboratories.

For this reason we have created **an innovative online training course**, with gamification concepts that arouse curiosity in the trainee and allow a quick and gradual learning on how to act and how to prevent the threat.

With the course, we are going to accredit "**staff training**" for companies that receive **security certification** with the possibility to take advantage of all the benefits for companies on staff training in digitization and cyber security..

# Training Courses



## On-demand and live e-learning training

- Annual package of training and refresher courses held on a quarterly basis:

**8 hours BASIC** for non-specialized personnel

**8 hours ADVANCED** for IT managers

Our courses are delivered by professionals with decades of experience  
ten years experience in the field and release certificates with the passing  
verification tests.





**Contact Us!**

+39 0736 261444

[info@cyberevolution.it](mailto:info@cyberevolution.it)

Web: lecs.io



Last Electrical Cyber Security