

fives

CAJA

Caja Goods-to-Person (GTP) Solution

Maximum Software, Minimal Hardware: Redefining Agile Fulfillment

The market demands fulfillment solutions that are not just automated, but truly **agile**. Caja's advanced Goods-to-Person (GTP) system, now an integrated solution within Fives Intralogistics, delivers high-velocity throughput using a radically efficient, **software-first approach**.

We empower businesses in the competitive **eCommerce, Retail, and Omnichannel** sectors, from **3PL** and **eGrocery** to **Fashion, Cosmetics & Beauty, and Spare Parts**, to dramatically increase capacity while securing a superior Return on Investment (ROI).

The Caja Differentiator: ROI Through Optimization

Guaranteed SLAs with Fewer Assets

Unlike traditional automation that requires over-provisioning of hardware, the Caja solution operates on the principle of **Maximum Software, Minimal Hardware**.

Our core commitment to you: Achieve the same throughput with **fewer robots and less storage location needed** than traditional GTP solutions, plus **Minimal Infrastructure Changes**.

This efficiency is possible only because of our software's **multi-layered optimization engine**, which constantly analyzes and adjusts material flow and robot paths in real-time, guaranteeing your Service Level Agreements (SLAs) while actively minimizing your total asset footprint and CapEx.

Deployment Agility: Brownfield & Greenfield Ready

Our system is engineered for maximum flexibility in deployment, ensuring you can automate without costly, disruptive overhauls.

Minimal Infrastructure Change

The system works directly with **standard shelving and bins (both plastic and cardboard)**, significantly **reducing or eliminating the need for proprietary bins** or complex decanting processes.

True Adaptability

Easily deployed in complex **brownfield retrofits** and efficient **greenfield designs**. The system handles challenging environmental factors, including **non-perfect floor surfaces, changes in ceiling heights, vents, and other structural constraints**.

Scalability & Peak Adaptivity

Your automation can start small and grow modularly with your needs. The system's intelligence ensures instant **peak season adaptivity** by dynamically reallocating resources.



Agile Robot Fleet



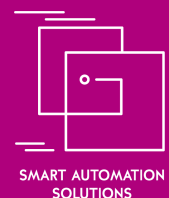
Intelligent WCS Software



Modular Storage Area



Optimized Workstations



INTRALOGISTICS

System Components: A Complete Robotic Solution

The Caja GTP system is a fully synchronized robotic warehouse automation solution, designed for precision and sustained performance. The solution consists of four integrated parts:

1 Agile Robot Fleet: Specialized and Cost-Effective

The system deploys a specialized two-robot fleet, optimized for cost-efficiency and performance across all storage levels. This strategy avoids the inefficiency of one-size-fits-all hardware by ensuring the right robot handles the right task.

The true synergy of the fleet is driven by the WCS.

- **Specialized Cooperation:** The Cart robot (fast, ground-level optimized) handles high-speed horizontal movement and quick retrievals from lower shelves. The Skyler robot (vertical reach, larger payload capacity) specializes in accessing the higher storage levels.
- **Dynamic Handoff:** The WCS intelligently directs the Skyler to retrieve items from above, which are then quickly routed via the Cart fleet for high-speed transport to the workstation, maximizing efficiency.
- **Cost Efficiency:** By utilizing the faster, cheaper Cart for the majority of the travel, the system minimizes overall hardware investment while still maximizing high storage utilization via Skyler's vertical access.

2 Intelligent WCS Software: The AI-Driven Brains

The foundation of the system is the AI-driven Warehouse Control System. This intelligent WCS is the core reason we can guarantee performance with fewer physical assets.

Multi-Layered Optimization

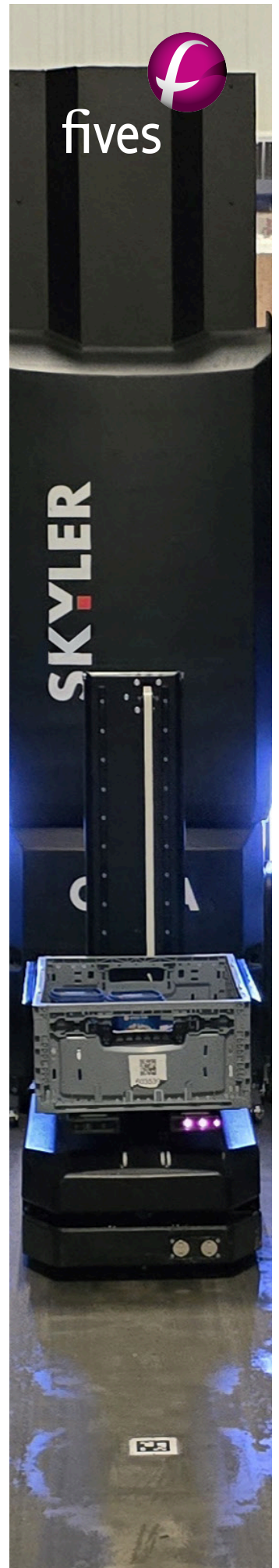
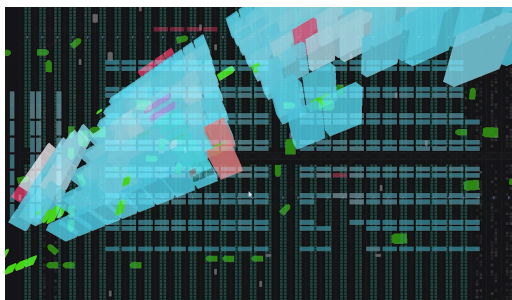
Uses advanced algorithms to control **order sequencing, load balancing, and load distribution** across workstations, preventing bottlenecks before they happen. This intelligence is the crucial factor that allows the system to achieve customer SLAs with **fewer robots and less actual location required** compared to regular GTP operations.

Simulation & Predictive Analytics

The software includes advanced **simulation capabilities** to model future demand scenarios and capacity changes. It uses historical and real-time data to **predict operational needs**, ensuring you can optimize robot fleet size, workstation allocation, and inventory placement for future peaks before they occur.

Operational Resilience

The system manages the entire robotic fleet as a unified resource pool, ensuring high-velocity throughput and operational resilience by constantly evaluating and adjusting robot paths and inventory access in real-time.





3 Modular Storage Area: Built for Your Space



The storage area is built around minimal operational and infrastructure impact. Unlike rigid systems, Caja adapts to your existing environment.

- **Vertical Space Maximization:** The system is engineered to utilize vertical space efficiently, operating on **N-tier** levels and reaching heights up to **12 meters** to maximize cubic utilization of the warehouse.
- **Unmatched Bin Flexibility (Reduced Cost):** Our solution works directly with **standard euro-size bins** and common storage media. We support **multi-SKU bins** and **bin dividers** without proprietary restrictions, and there are **no bin height limitations**. We work with **cardboard or plastic bins**, even within the same warehouse, significantly reducing initial and operational costs.
- **Deployment Versatility:** The modular design ensures rapid deployment and is fully compatible with existing shelving structures.
- **Non-Proprietary:** Works directly with **standard shelving and cartons**, eliminating or reducing the need for proprietary bins or complex decanting processes. This simplifies receiving and inventory management.

4 Optimized Workstations: Maximize Worker Productivity

Our Inbound and Picking stations are the ergonomic interface between the human workforce and the automated system, focused entirely on maximizing throughput per worker.

Worker Productivity

Stations are fully synchronized with the warehouse operation to maximize valuable worker time, **eliminating manual search and travel time** (reducing walking time) and increasing overall fulfillment center efficiency.

Full Fulfillment Cycle Support

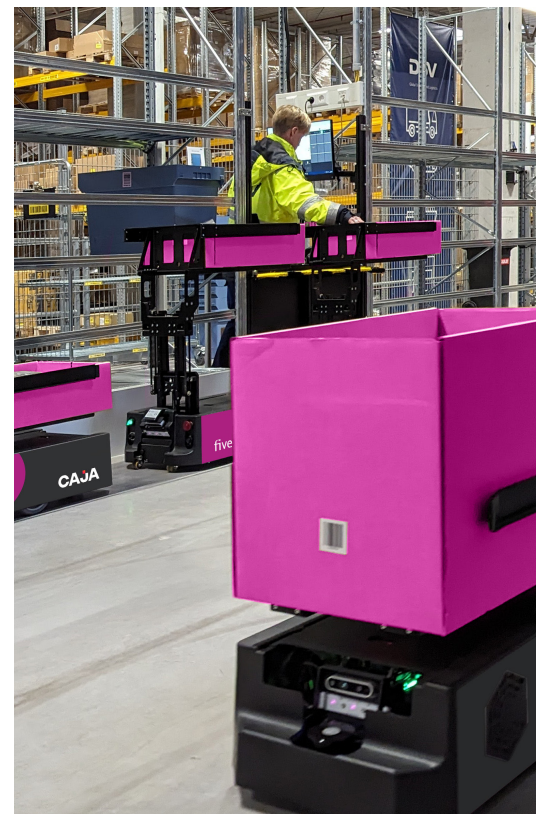
Beyond outbound picking, our workstations handle the complete operational cycle, supporting complex processes like **reverse logistics, product recalls, and bin consolidation**.

Error-Proofing and Efficiency

Picking accuracy is guaranteed through our **fail-safe software** logic, which is supported by integrated **Put to Light systems** at the workstation. This powerful combination eliminates picking errors, saving time, money, and protecting your brand reputation.

Ergonomics

Items are brought directly to comfortable, ergonomic workstations or conveyors for efficient, accurate picking, promoting worker satisfaction and reducing errors.



Fives Intralogistics: Global Scale and Deployment

Caja's technology is fully integrated by Fives, enhancing the value we bring to every customer. This integration means you receive both cutting-edge technology and world-class, multi-regional execution.

Seamless Integration and Expanded Portfolio

The acquisition ensures fast and seamless deployment of Caja alongside Fives Intralogistics' other warehouse automation solutions.

- **Unified Automation:** Caja's GTP technology now complements Fives' comprehensive range of shuttles, mini-loads, conveyors, and robotics handling solutions. This provides customers with true end-to-end automation from a single global partner.
- **Multi-Region Implementation:** Leveraging Fives' extensive global engineering and service network, the Caja solution can be deployed, scaled, and supported consistently across multiple continents and regions. This is vital for global enterprises running synchronized logistics operations in Europe, North America, and Japan.

Fives: Your One-Stop-Shop for Automated Fulfillment

About Fives' Intralogistics Business Unit

As a key partner in supply chain transformation, Fives delivers customized solutions for sorting, handling, storage, and automated and robotic order preparation, all designed to optimize logistics flows.

Fives' integrated approach combines a broad portfolio of advanced technologies, proprietary software, and aftermarket services for the retail and FMCG (Fast Moving Consumer Goods), postal and courier, e-commerce, manufacturing industries and airport markets. As a global company with over 1,300 employees in Europe, Asia and North America, Fives offers comprehensive support, from design to start-up, optimization, service, and end-of-life, to help customers succeed.

For more than 60 years, Fives has been developing innovative products and technologies, some of which have become market standards. Today, Fives continues to innovate to enhance its customers' competitiveness, improve operators' working conditions, and protect the environment.

About Fives Group

As an industrial engineering Group with a heritage of over 200 years, Fives designs and supplies machines, process equipment and production lines for the world's largest industrial players in various sectors such as steel, aerospace and special machining, aluminium, the automotive and manufacturing industries, cement, energy, logistics and glass.

The effectiveness of its R&D programs enables Fives to design forward-thinking solutions that anticipate industrials' needs in terms of profitability, performance, quality, safety and respect for the environment.

In 2024, Fives achieved a turnover of over €2.2 billion, with more than 9,200 employees in 25 countries.

Fives Intralogistics SAS

fil.fr.sales@fivesgroup.com

646 Chemin de la Jaconne - 38670 Chasse-sur-Rhône | FRANCE

www.fivesgroup.com



fives

Industry can do it