

Dietetic Complementary Feed - Mineral
For Dairy // Suckler cows

DELIBOL

"To manage after-calving"

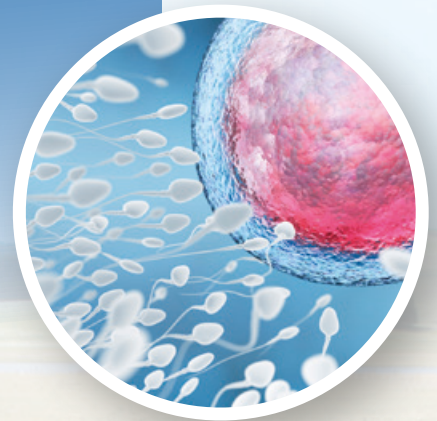
Exists in Organic version

UAB 



- Support to placenta and uterine liquids expulsion
- Support the process of delivery after calving

"Easy delivery, of course!"



Natural
By TECHNIA

DELIBOL

Placenta expulsion challenge

Retained placenta happens when placenta isn't expelled in the 6 or 10 hours following calving.

Indeed, as uterine contractions decrease after this delay, the expulsion won't be satisfactory.

Retained placenta is more likely to occur when calving was difficult, twins were born or in case of late abortions.

Primiparous cows has significantly greater chances to develop retained placenta compared to multiparous.

Retained placenta increases the chance to develop uterine infections and to delay reproduction success.



Use in priority after

- Difficult calvings
- Birth of twins
- Late abortions
- Primiparous calvings



How to use?

DELIBOL application is advised as soon as possible after calving, maximum 6 hours, in order to support placenta expulsion and the beginning of uterine involution.

