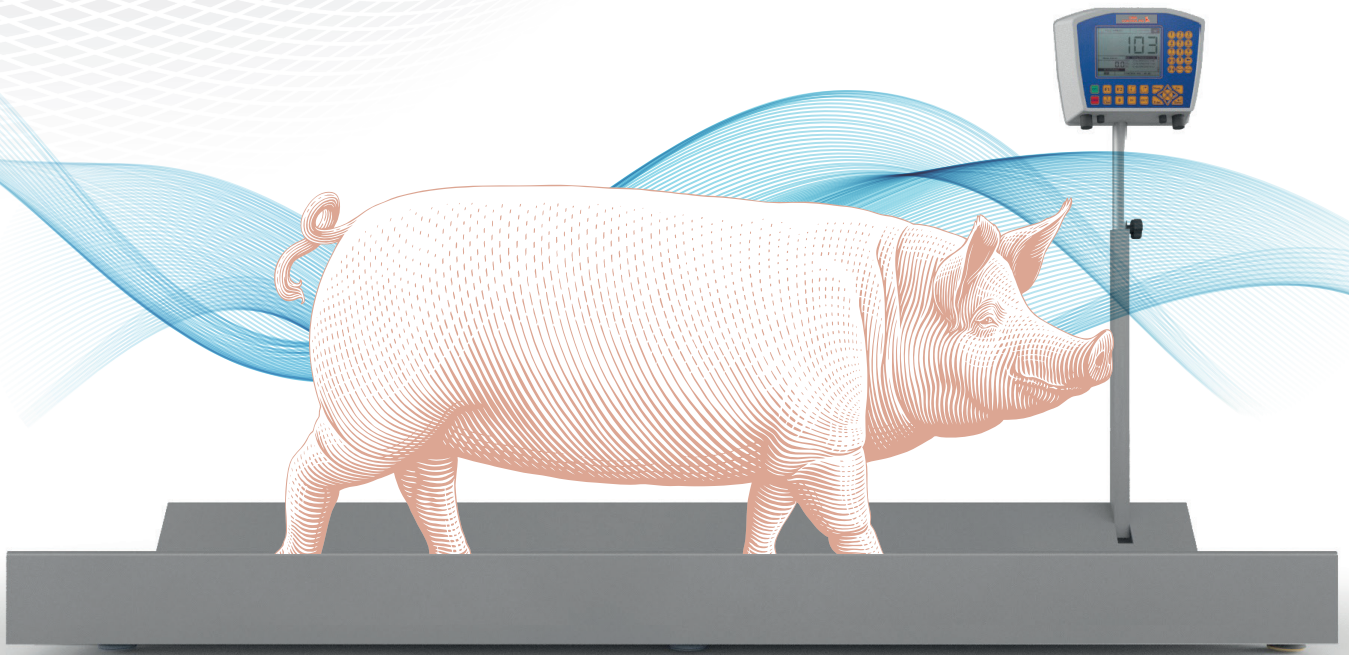


# CIMA CONTROL PIG



## Control of pig in motion

Electronic control, identification  
and selection system  
for pigs in motion.



**CIMA**

**FAST  
ACCURATE  
NO STRESS FOR ANIMALS**

**Electronic system for fast weight detection that allows to check pigs in motion, without having to stop or put them in a cage.**

**GOALS:**

- Conversion indexes improving
- To reduce the barn emptying time
- Eliminate withholdings at the slaughterhouse for non-homogeneous pigs
- To obtain awards for the pigs uniformity
- Gilts optimal management to ensure them an excellent reproductive career

**MAIN USES:**

**GILTS**

Ideal weight control for the first insemination

**FATTENING**

Growing monitoring and ideal weight detection for the delivery to the slaughterhouse

**SOWS**

Control at the entrance and exit of the delivery room

**WEANING**

Growth monitoring

**FUNCTION AND FEATURES:**

- Total weight calculation of the animals passed through the platform
- Average weight calculation of the animals passed through the platform
- Storage of weighings in a historical menu
- Data saving on an Usb pen drive
- On line help for each screen/central unit function
- Possibility of managing international units of measurement
- Contrast level adjustment
- Brightness adjustment possibility
- Internal clock
- Power voltage detection
- Battery level indication
- Backup settings
- Data backup
- Fitted doors for various optional



**CIMA**



CIMA srl • Correggio (RE) • Tel. +39 0522 637740 [controlpig@cima-impianti.it](mailto:controlpig@cima-impianti.it) • [www.cima-impianti.it](http://www.cima-impianti.it)

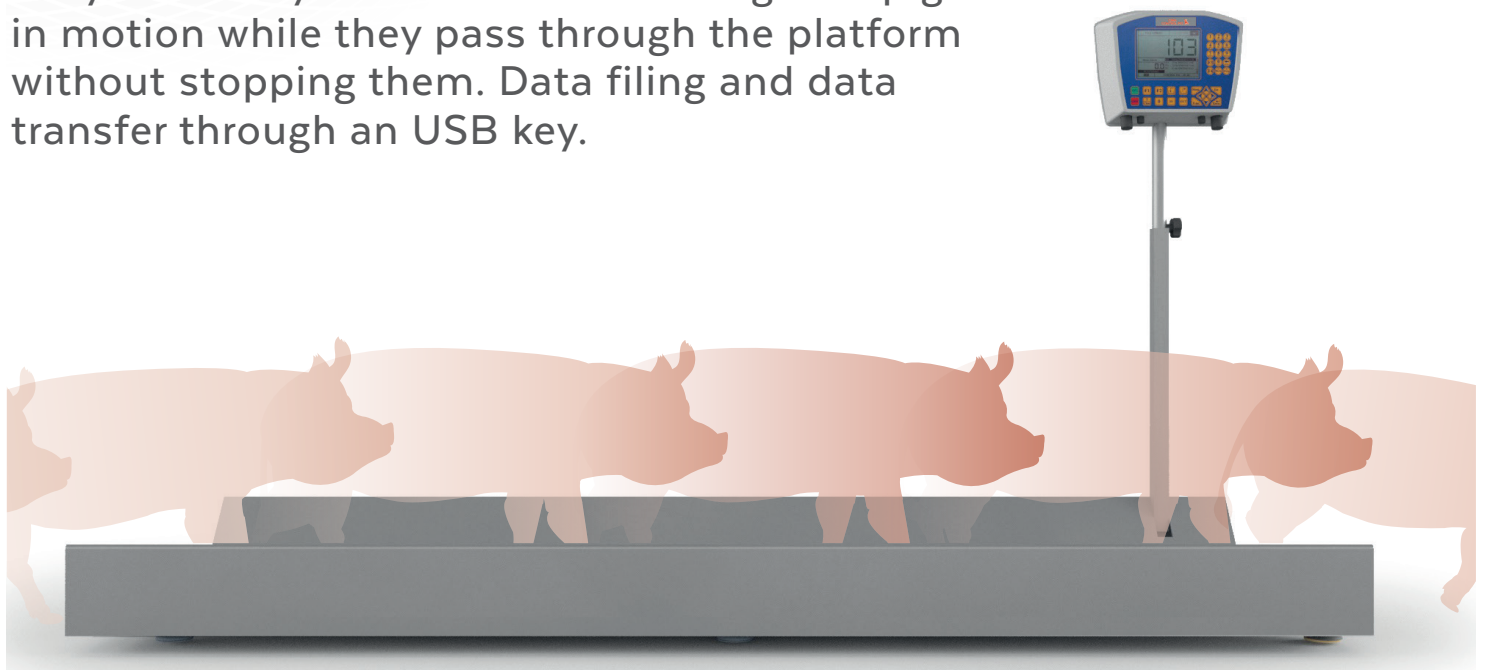




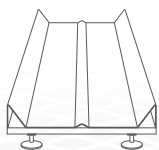
# CIMA CONTROL PIG

In pig farming to control means to improve.

Easy mobile system to check the weight of pigs in motion while they pass through the platform without stopping them. Data filing and data transfer through an USB key.

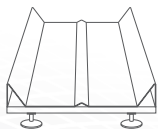


## PLATFORM DIMENSIONS



250 x 70

Specific for sows.



200 x 70/60

Standard for all pigs.



60 x 60

Specific for weaning in delivery room.

## ELECTRONIC CENTRAL UNIT



- Alluminium box
- 5,7" backlight LCD display
- High sensitivity membrane keyboard
- Plug-in power supply
- Connectors
- Connection cable
- Battery for 8 hours of operation
- Usb port

## EXPORTABLE REPORTS WITH DATA PER EACH PIG



BOX N°	PIG	KG	ID	TIME
1	96	.65		08:58
2	99	.54		08:58
3	97	.12		08:59
4	105	.23		08:59
5	98	.32		08:59
6	97	.78		09:00
7	100	.97		09:00
8	105	.41		09:00
9	118	.85		09:01
10	123	.15		09:01
11	111	.27		09:01
12	92	.39		09:01
13	104	.60		09:02
14	105	.43		09:02
15	94	.85		09:02
16	88	.25		09:02
Average weight of the animals passed through KG	1,632			
Total weight of the animals passed through KG	102,00			

# CIMA



CIMA srl • Correggio (RE) • Tel. +39 0522 637740 [controlpig@cima-impianti.it](mailto:controlpig@cima-impianti.it) • [www.cima-impianti.it](http://www.cima-impianti.it)



# CIMA IDENTIFICATION



## Pigs in motion identification with Cima Control Pig.

CIMA IDENTIFICATION is a Cima Control Pig accessory which allows to identify the pigs reading the RFID electronic ear tag and it consists of:

### CONTROL UNIT:

- It is interfaced with the Cima Control Pig unit and with the reading antenna
- It is equipped with internal battery, with lighting and sound signal for the tag number acquisition and control and setting button.

### MANAGEMENT PROGRAM:

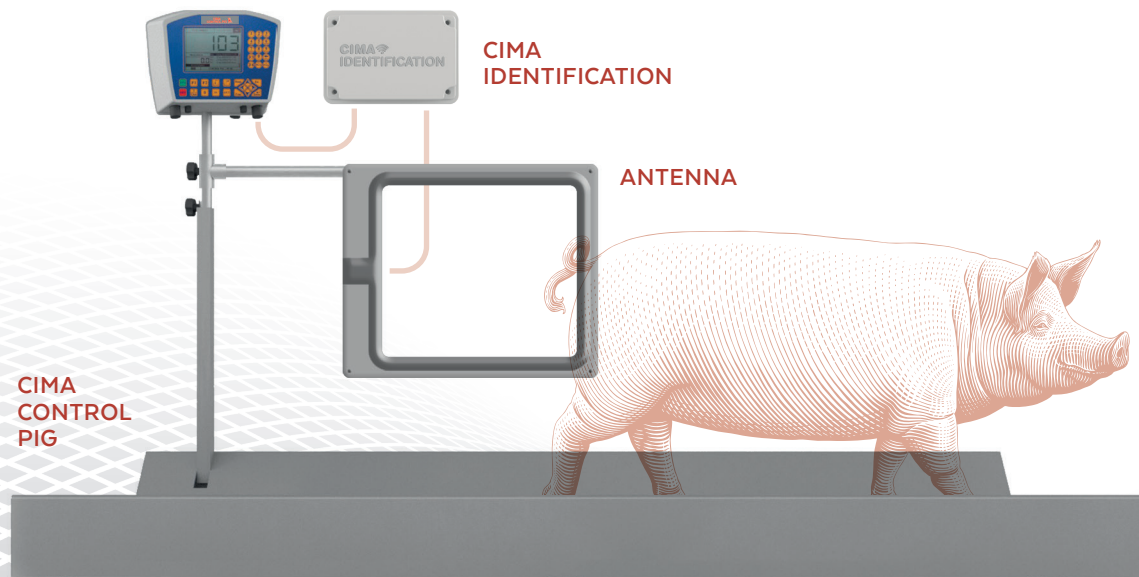
- Test for reading number and tags technology
- Reading tag with number registration while the animal passes through (without weighting reading)
- Reading tag with number registration matched to the animal weight while the animal passes through.

### ANTENNA:

- It's fixed on an antenna support made of stainless steel settled on the Cima Control Pig
- RFID Tags Reading, type HDX and FDX, ISO 11784/85

### REGISTRATION MODEL:

Box n° 14 barn 1				
PIG	Weight Kg.	ID	Data	Hour
1	96	0380000000000065	22/03/2020	08:58
2	99	0380000000000068	22/03/2020	08:59
3	97	0380000000000055	22/03/2020	08:59
4	105	0380000000000066	22/03/2020	08:59
5	98	0380000000000061	22/03/2020	08:59
6	97	0380000000000053	22/03/2020	09:00
7	100	0380000000000064	22/03/2020	09:00
8	105	0380000000000060	22/03/2020	09:00
9	118	0380000000000057	22/03/2020	09:01
10	123	0380000000000058	22/03/2020	09:01
TotalPigs Weight	Kg. 1.038			
Pig average	Kg. 103,8			



# CIMA



CIMA srl • Correggio (RE) • Tel. +39 0522 637740 [controlpig@cima-impianti.it](mailto:controlpig@cima-impianti.it) • [www.cima-impianti.it](http://www.cima-impianti.it)



# CIMA AUTOMATIC MARKER

## Marking of pigs in motion with Cima Control Pig.

CIMA AUTOMATIC MARKER is a Cima Control Pig accessory which marks automatically pigs with colored spray. It allows to select pigs for the delivery based on a weighing range to obtain the maximum gain at the slaughterhouse.

### CENTRAL UNIT:

It interfaces with the Cima Control Pig control unit and it can manage from 1 up to 4 markers.

### SETTING PROGRAM:

It's possible to set up to 4 selection types, based on weighing:

- Weight > (more than..) e.g.: 100kgs, all the pigs with a weight more than 100kgs will be marked
- Weight < (less than..) e.g.: 100 kgs, alle the pigs with a weight less than 100kgs will be marked
- Weight >< (between two values) e.g.: 100kgs and 110kgs, all the pigs with a weight between 100 and 110 kgs will be marked
- Weight <> (out from two values) e.g.: 100kgs and 110 kgs, all the pigs with a weight less than 100 kgs and all the pigs with a weight more than 110 kgs will be marked

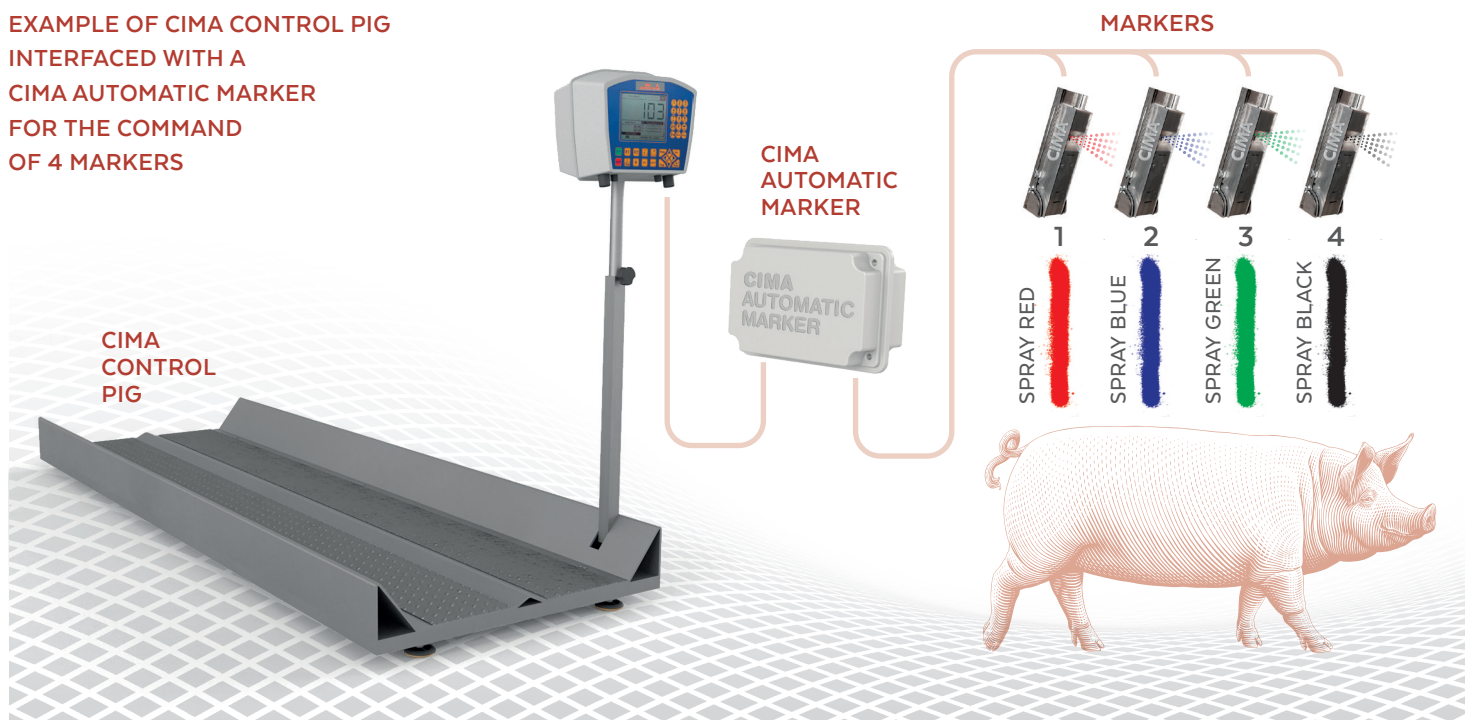
**The weighing setting are free at farmer discretion.**

### MARKER:

Made of stainless steel and it's prepared to use commercial colored spray cans of 400ml and 500ml. Two adjustable stainless-steel brackets can fix it to the corridor wall.

It's connected through the cable with the Automatic Marker command unit powered by the Cima Control Pig.

EXAMPLE OF CIMA CONTROL PIG  
INTERFACED WITH A  
CIMA AUTOMATIC MARKER  
FOR THE COMMAND  
OF 4 MARKERS



# CIMA



CIMA srl • Correggio (RE) • Tel. +39 0522 637740 [controlpig@cima-impianti.it](mailto:controlpig@cima-impianti.it) • [www.cima-impianti.it](http://www.cima-impianti.it)





# CIMA SELECTION GATE



## Pigs in motion selection with Cima Control Pig.

CIMA SELECTION GATE is a Cima Control Pig accessory to select automatically the pigs directing them to the assigned box, based on the weight.

### COMMAND UNIT:

It's interfaced with the Cima Control Pig unit for the gate control

### MANAGEMENT PROGRAM:

It's possible to set up to 4 selection types based on weighing:

Weight > (more than..) e.g.: 100kgs, all the pigs with a weight more than 100kgs will be selected

Weight < (less than..) e.g.: 100 kgs, all the pigs with a weight less than 100kgs will be selected

Weight >> (between two values) e.g.: 100kgs and 110kgs, all the pigs with a weight between 100 and 110 kgs will be selected

Weight << (out from two values) e.g.: 100kgs and 110 kgs, all the pigs with a weight less than 100 kgs and all the pigs with a weight more than 110 kgs will be selected

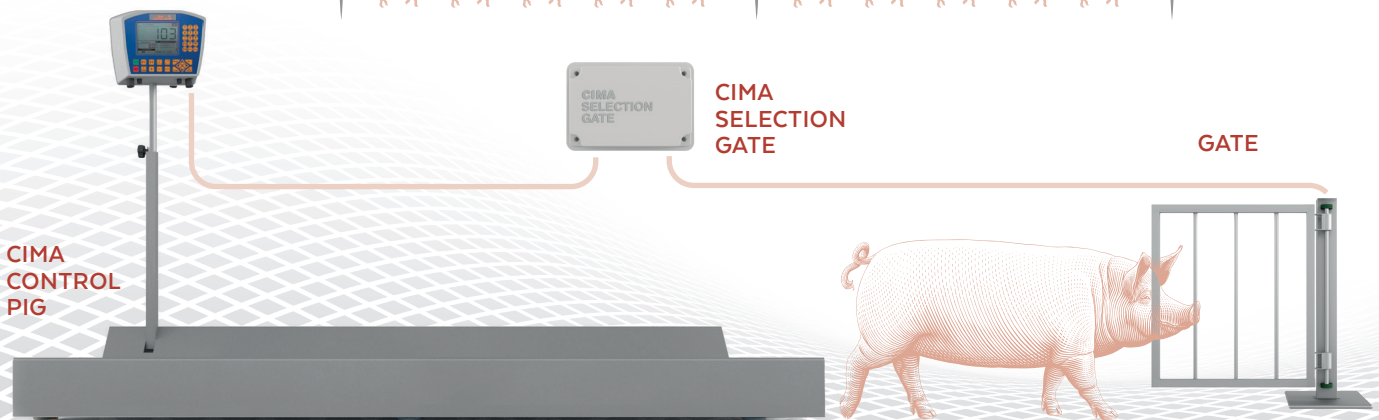
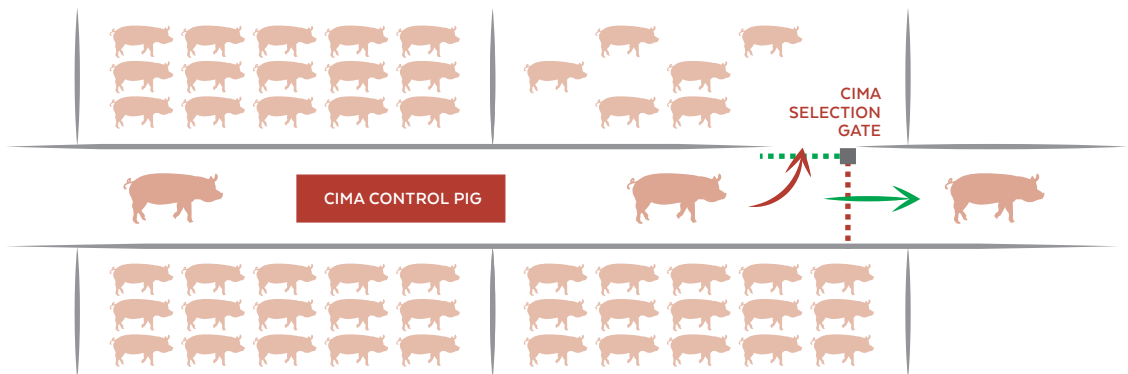
The weighing setting are free at farmer discretion.

### GATE:

Automatic and mobile gate made of stainless steel. With two adjustable brackets to be fixed to the corridor wall to set in front of the box door where you want to let go the selected pigs.

It's controlled by the Selection Gate central unit and it's powered by wall socket or battery.

### EXAMPLE OF CIMA CONTROL PIG INTERFACED WITH CIMA SELECTION GATE FOR THE AUTOMATIC SELECTION



# CIMA



CIMA srl • Correggio (RE) • Tel. +39 0522 637740 [controlpig@cima-impianti.it](mailto:controlpig@cima-impianti.it) • [www.cima-impianti.it](http://www.cima-impianti.it)



# CIMA WI-FI HUB

## Cima Control Pig file transfer.

CIMA WI-FI HUB is an interfaced accessory for the weighing data transfer to web app  
It will be possible to do the following:

Display the control unit screen with the possibility to close the weighing and to name them.

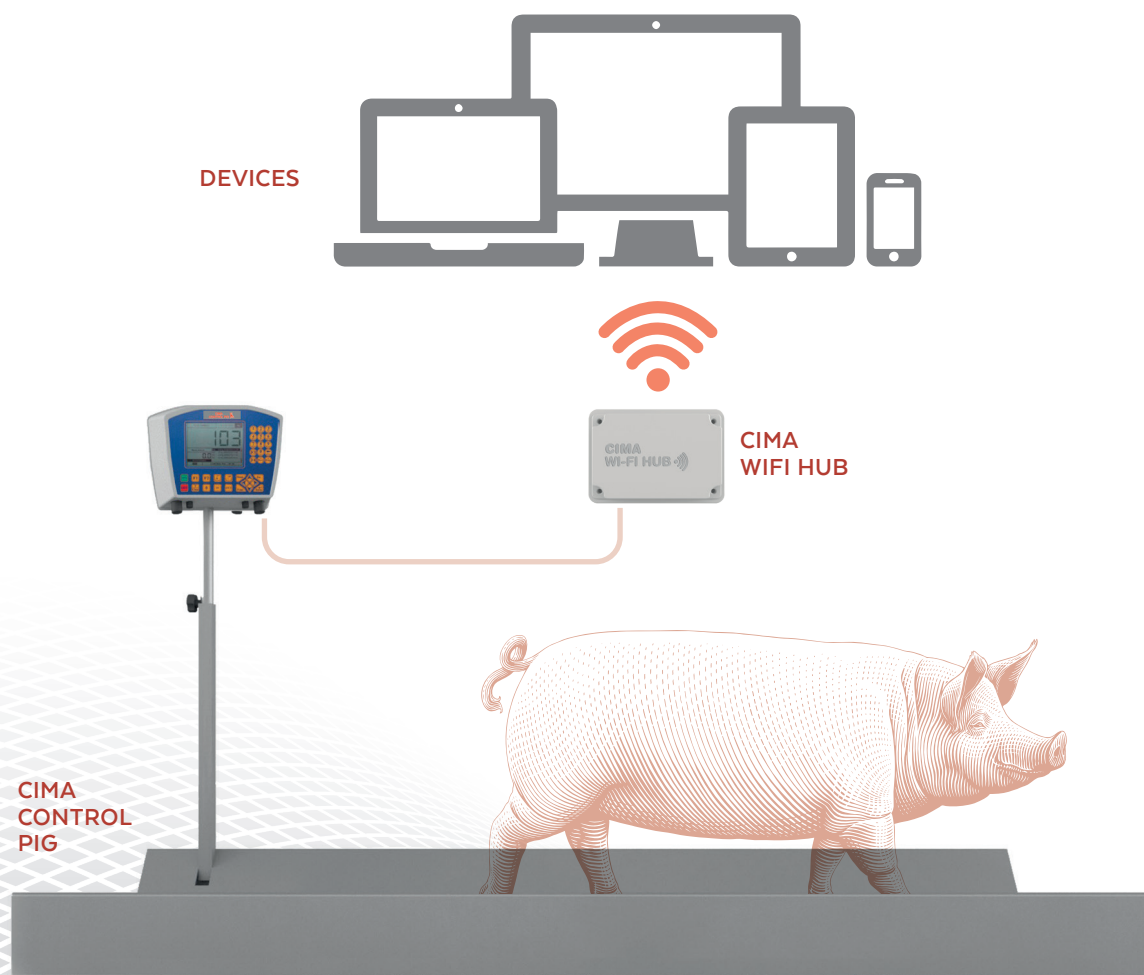
Display and download the weighing group database file.

Display and download the single weight database file.

Automatic calibration

Setting parameters for Cima Automatic Marker and Cima Automatic Gate

OPEN-API solution for data acquisition by the most frequent livestock software



# CIMA



CIMA srl • Correggio (RE) • Tel. +39 0522 637740 [controlpig@cima-impianti.it](mailto:controlpig@cima-impianti.it) • [www.cima-impianti.it](http://www.cima-impianti.it)

