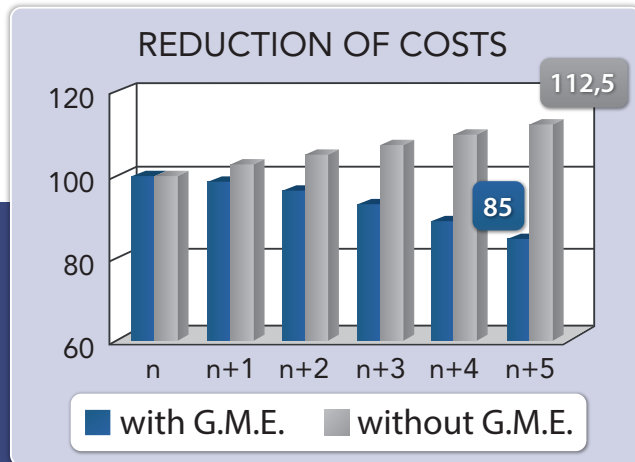


GME METHOD

Global Manufacturing Excellence :

The GME Method allows companies that adopt it to create a significant performance gap over their competitors.



The steady reduction of costs ensure long-term competitiveness and continuity of the company

YOUR BENEFIT !

Improve your performance on a continuous basis is :

- ▶ Sustainably reduce your production and maintenance costs.
- ▶ Increase customer satisfaction by excellent service and impeccable quality.
- ▶ Motivate and train your staff through daily involvement and increased participation.



THE GME METHOD
AND IT'S **FACTORY_{GME}** SOFTWARE
LEAD YOU, DAY AFTER DAY

CONTINUOUS IMPROVEMENT
OF PERFORMANCES
IS OUR PERMANENT PURPOSE !

THEY TRUST US :

- ▶ **Food industry** : Solarec, Belourthe, Aigremont
- ▶ **Boilermaking** : Henkens
- ▶ **Glass industry** : Knauf Insulation
- ▶ **Chemical industry** : Prayon, Silox
- ▶ **Paper industry** : Lucart France
- ▶ **Steel industry** : Arcelor Mittal
- ▶ **Healthcare** : Mölnlycke Healthcare
- ▶ **Business Services** : Depairon, MCP
- ▶ **Machining** : Resarm, Delhez, Graux

THEIR MAIN ADVANTAGES :

- ▶ Rigorous methodology, based on practice and common sense.
- ▶ Proven experience, proven successes.
- ▶ Imply the entire staff.
- ▶ Easy to use, friendly, usable by all.
- ▶ Adaptable to all types of processes.
- ▶ Integrate all the daily events
- ▶ Evolutionary
- ▶ Measured performance
- ▶ Customizable software by the user
- ▶ Possible connections to other databases



Tel. : +32 (0)87 / 76.35.48 - Fax : +32 (0)87 / 77.27.59

www.factorysystems.eu - info@factorysystems.eu
Voie des Waides 8 - B-4845 Sart-lez-Spa (Belgique)

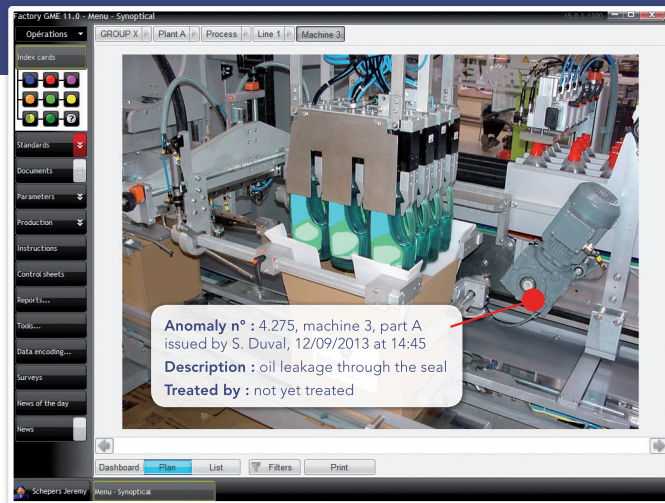
FACTORY GME

The FACTORYGME software,

of completely new conception, gathers in a single platform the features of :

- **Production Management : CAM**
- **Maintenance Management : CMMS**

To constitute a real ERP dedicated to industrial performance !



Example of technical anomaly brought back on a photo of the overview diagram.

Designed by and for the end users, it allies conviviality and performance.

Appreciated by both managers and operators, beyond a management tool, it stands out as a powerful lever of improvement.



The first specificity **FACTORYGME software** is that it describes the whole company by means of photographs and plans. Each workstation is shown in a virtual way through screens.

The **block diagram of a process** becomes the privileged communication interface, all events are reported : anomalies to be indicated, work to be performed, spare parts to be looked for, tasks to notify documents to be validated...

PRODUCTION



INDEX CARDS : recording and processing of anomalies or suggestions stemming from the production.



STANDARDS : planning and follow-up of systematic tasks (cleanings, inspections...).



DOCUMENTS : management of documents and procedures, of trainings and lessons.



PLANNING : implementation and monitoring of the production schedule. From sales forecasts to finished products.



PERFORMANCES : real-time monitoring of production performance (TRG) and stops time.



ANALYSIS : tools for research, analysis and valuation of recorded data.



COMMUNICATION : creation of customized reports and key performance indicators (Kpi's). Various communications tools (guidelines, news, quiz...).

MAINTENANCE



INDEX CARDS : recording and processing of technical problems or suggestions; creating and processing of work orders or orders of new works.



STANDARDS : planning and monitoring of preventive maintenance tasks.



DOCUMENTS : management of plans and technical documents, of procedures and trainings.



PLANNING : rand monitoring of occupation of personal, work and ranges. Cost control.



ARTICLES : management of spare parts, stock movements, offers...



ANALYSIS : analysis and history of interventions, anomalies, breakdowns, consumptions...



COMMUNICATION : creating custom reports and specific maintenance performance indicators (Kpi's); communication with ERP's.