



Building data made actionable with peakFlow

Challenges in Operating Buildings

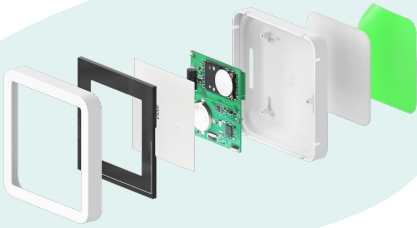


Cost of Ownership – Adding wired or battery-powered sensing capabilities results in higher installation or operating cost.



Data Silos – Existing systems struggle to share data seamlessly between them, creating transparency issues.

The Solution

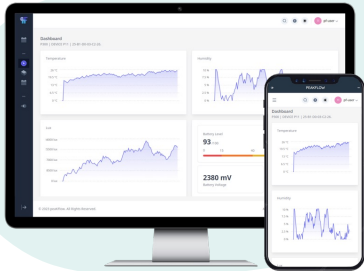


Sensing Platform

Self-sustaining, wireless hardware platform that harvests indoor light equipped with state-of-the-art sensing for air quality, CO₂, occupancy and more.

Deployment

Seamlessly scalable plug-and-play deployment capabilities. Generating anonymous insights into asset utilization.



Web Platform

Data visualization and AI-driven analytics & insights. Open integrations to suites and 3rd party providers (ABB, Planon, etc.)

About us

peakFlow is a building intelligence platform that combines highly scalable, perpetual sensing capabilities and intelligent data processing to deliver actionable insights and recommendations.

We help building managers, understand the utilization of their assets unlocking optimization potential.

Key Benefits

- Fast and easily installed smart sensing, enabled through lower installation and operating costs
- Combining multiple data sources, including from external systems enables root cause & impact analysis.
- User-friendly interface to receive notifications, implement suggestions and report on infrastructure utilization.
- Optimize asset utilization and consumption by up to 20%.

The Team



Tiago Salzmann

Technology Lead
Msc. ETH EEIT



Yvan Bosshard

Business Lead
MSc. ETH EEIT



Rafael Monasterios

Product Lead
MSc. ETH MECH

Supported
by

ETH zürich
pioneer fellowship



Find Out More

