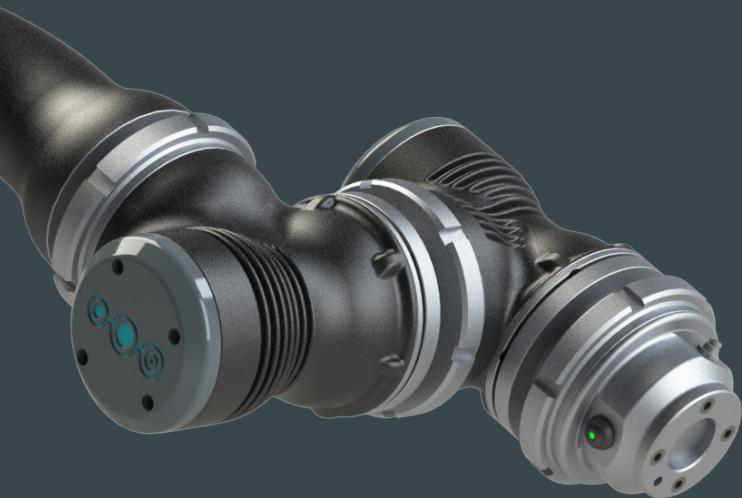


MSiinnov
MINTAKA SYSTEM INNOVATION



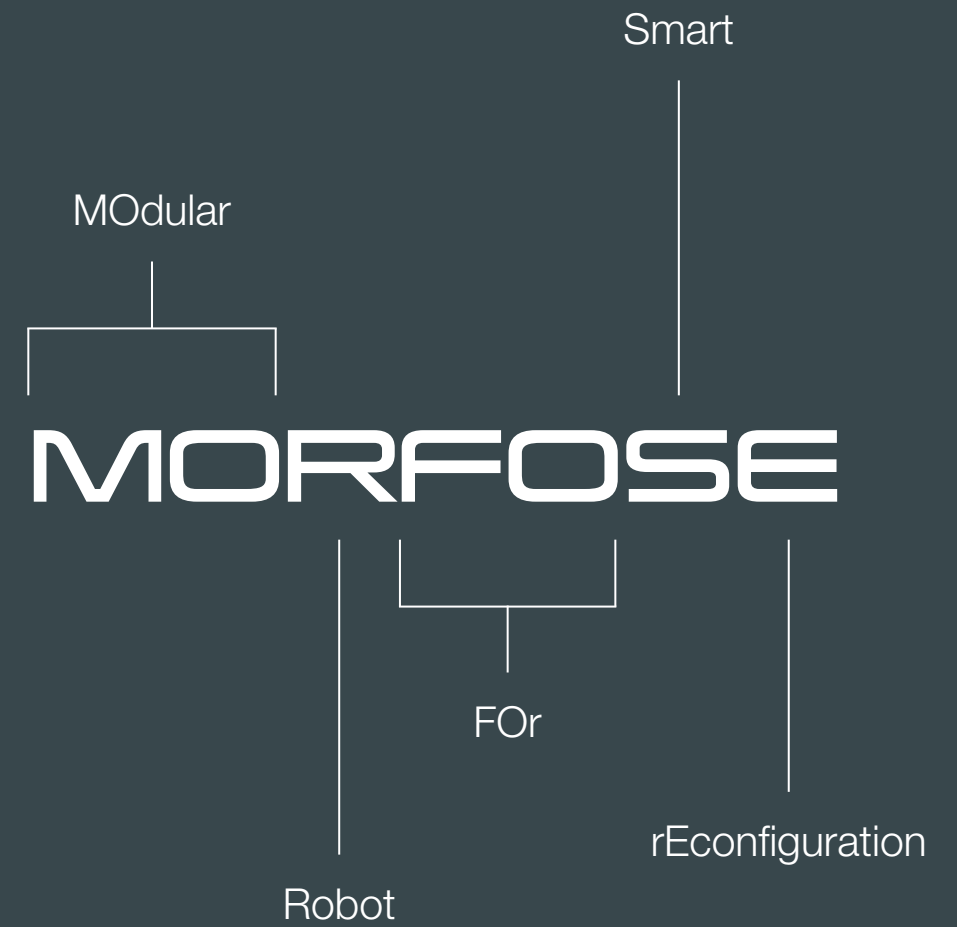
Modular cobotics made in France

OUR MISSION

Promote agility and performances of companies
with people centred technology solutions.



MORFOSE exhibited at the Elysée Palace in Paris for "La Grande Exposition du Fabriqué en France" on July 1 and 2, 2023.



MORFOSE

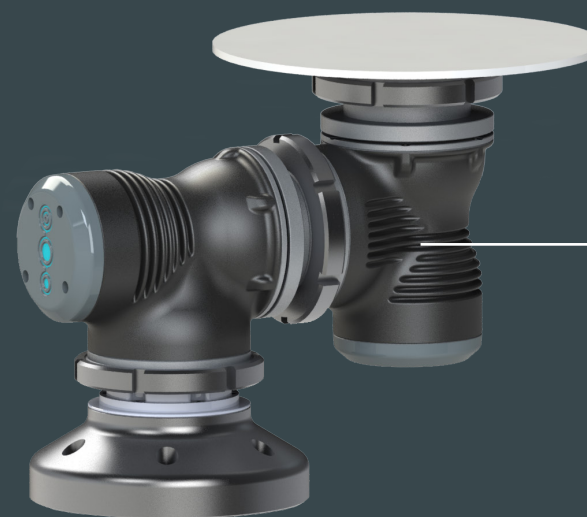
The first industrial modular collaborative robot made in France.

The Collaborative Robot, or “Cobot”, MORFOSE represents a real opportunity to combine **agility** and **performance** while putting people back at the heart of your project. Adaptable to the process lines of many industrial sectors, it can cover a wide range of needs. Its flexibility makes it a **multi-purpose innovation tool**, capable on its own of replacing a range of robotics configurations. In order to match your ambitions, MORFOSE ensures responsible investment by adapting to your developments and your evolution needs.

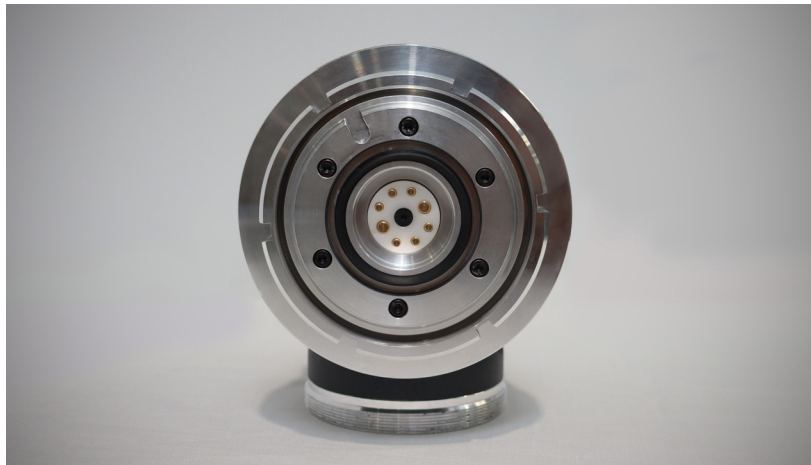
MORFOSE



6-axis setup



+ 2-axis positioner



MORFOSE modules.

MODULARITY

Become a player in the industry of the future by adopting MORFOSE.

MORFOSE is fully modular, it adapts to its environment and the needs of its operator. This **revolutionary** modular fastener system is a central element of the cobot that allows the modules to be interconnected in the configuration desired. To guarantee performance, you can aim for the **full use** of your cobot by adapting it to your production line in **less than 10 minutes**.

INFINITE ROTATION

Global innovation that boosts your productivity potential

Each module of MORFOSE has infinite rotational capacity. This strategic and **unique innovation** makes it possible to pass energy and data from one module to another without being limited by the mechanical limitations to 360° rotation. The infinite rotation saves considerable **cycle time** which guarantees an increase in productivity.

MORFOSE limits the environmental impact of tomorrow's industry.

Thanks to these two major innovations, MS-Innov guarantees that MORFOSE will make it possible to limit the consumption of raw materials, reduce the carbon footprint during its manufacture and limit energy consumption during its use. In addition, the interchangeability and re-employability of its modules make it possible to extend its lifespan and reduce obsolescence.

EXAMPLES OF POSSIBLE APPLICATIONS

What MORFOSE can do for you ...



HANDLING

Loading and unloading of machines ;
Palletization ; Pick and Place ;
Sorting/organizing of objects.



QUALITY CONTROL

Measurement ; Testing ; Inspection
and maintenance.



ASSEMBLY

Screwing ; Gluing ; Welding ; Riveting ;
Crimping.



APPLICATION OF OUTER LAYERS

Application of liquids, pastes or
powders.



REMOVAL OF OUTER LAYERS

Finishing ; sanding ; Grinding ;
Deburring ; Engraving.

TECHNICAL SPECIFICATIONS

Reconfiguration	10 minutes
Number of axes	up to 7 axes + synchronized remote axes
Payload	up to 20 kg
Communication	communicates with all industrial environments
Scan Angle	infinite
Reach	up to 1200 mm
Collaboration operations	Free Drive, contact detection, speed settings, throttling zones
Repeatability	0,1 mm
Manufacturer's warranty	15 months

EASY PROGRAMMING

Dare to join the MORFOSE adventure thanks to its ease of use.

Developed by our teams, our **MARCUS** software guarantees ease of programming, allowing as many people as possible to use and control MORFOSE. With its intuitive environment, our software solution can be used **without specific programming skill**. The goal of this approach is to make human-machine interactions accessible and to democratize the use of robotics.



Programming interface for our MARCUS software.

TRAINING

MS-Innov offers training provided by our certified partners to meet your responsiveness and proximity needs.

- Follow the half-day introduction to piloting MORFOSE and become autonomous in programming with node diagrams.
- With an extra day you can enrich your programming knowledge to master MORFOSE, its peripherals, tools and variables.



Training in the use of our MORFOSE programming software.



The MS-Innov team, Belfort.



MS-Innov selected from 2 452 candidates to take part in "La Grande Exposition du Fabriqué en France 2023" at the Elysée Palace to exhibit its MORFOSE, proud representative of the Territoire de Belfort.

Théo Rougemont - Projects Director, Julien Morel - Manager and Aurélien Heck - Mechanical Manager in front of the Elysée Palace in Paris.

MS-INNOV

An adventure for people.

The first **French-owned company** to develop, design, assemble and market an industrial robot, MS-Innov, located in the **Territoire de Belfort**, has established itself on the robotics market with MORFOSE.

Our modular collaborative robot presents **major innovations** while placing people at the heart of the solution.

Our aim: to support industrial companies in the democratization of new technologies.

Composed of about thirty people, our motivated, ambitious and multi-disciplinary team is ready to meet the industrial, technological and human challenges of **industry of the future** with an energy directed by a philosophy

Agility for all, with everyone

HISTORY

2015 It was on January 2, 2015 that **Julien Morel** decided to embark on setting up a business and created **MS-Innov** with a strong desire to combine human values with industrial performance.

2019 MS-Innov consolidated its innovation work on the democratization of technologies through a research partnership with **UTBM** as part of a **CIFRE thesis**, targeting the field of robotics.

2021 Supported by **French State** for the continuation of its **R&D** phase, MS-Innov officially launched the industrial development of MORFOSE on January 1, 2021.

2023 After two years of work, MS-Innov, concretized its project by **marketing** its flagship product **MORFOSE** for October.

IDENTITY

Our values, our DNA.

MS-Innov is not defined only through its mission; the values we defend constitute a fundamental part of our identity. **Human relationships** are at the very heart of our company, with a strong ethic of **transparency**, **sharing** and **listening**. Thanks to our development, we can now share our vision with solutions and actions that have a greater impact on our ecosystem.

Ethics · Commitment

Agility · Prospectivity

LABEL OF



MEMBER OF



FINANCED BY



*Agility for all,
with everyone.*



1A rue Jacqueline Auriol - 90000 BEFORT

+33 (0)3 39 03 41 60



ms-innov.fr