

Transmission solutions for heavy industry

- Maintenance
- Replacement
- Engineering
- Applications



Couplings and Components

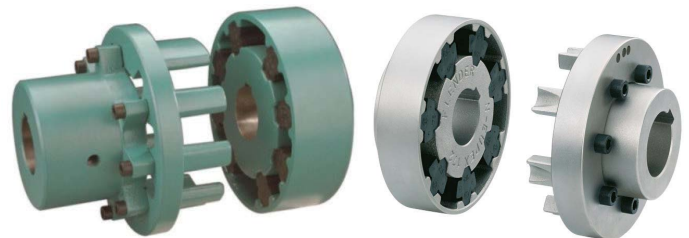
Pin & bush coupling



Pencoflex

Rupex

Pin coupling



Tex -o-flex

N-Eupex

Gear coupling



Hateco

Omega

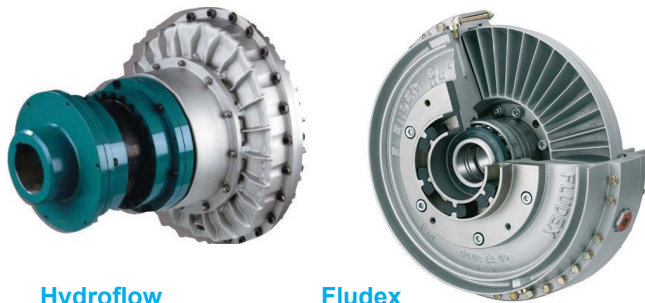
Highly flexible coupling



Viva

Elpex

Fluid coupling



Hydroflow

Fludex

Magnetic coupling



Other couplings



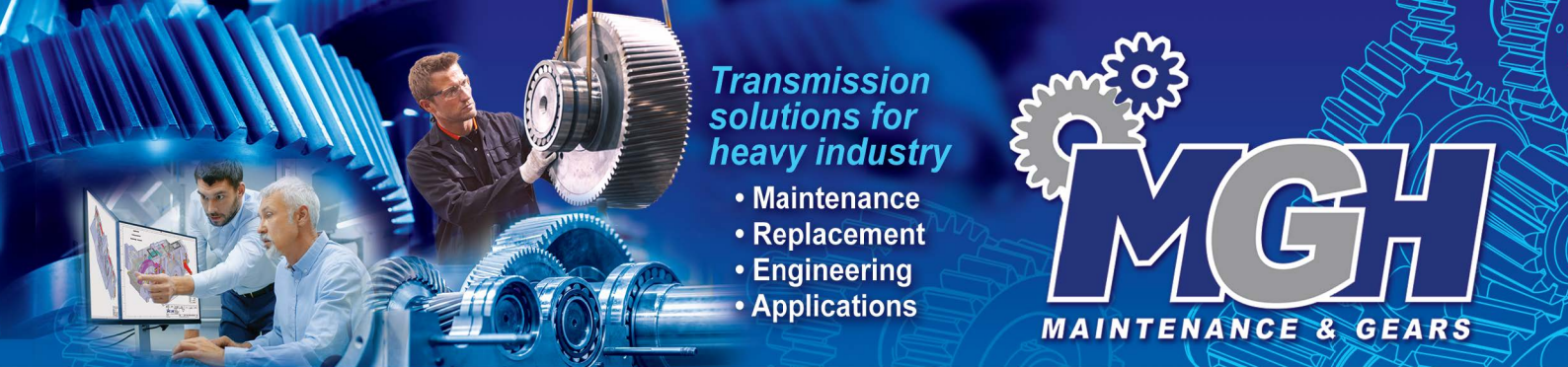
Rotex

Barrel

Lamel coupling

Composite coupling





Transmission solutions for heavy industry

- Maintenance
- Replacement
- Engineering
- Applications

MGH
MAINTENANCE & GEARS

Couplings and Components

Coupling & components	Pin & bush		Pin		Highly flexible			Gear	Disk	Fluid	Magnetic
Features	 <p>Pencoflex Rupex</p>		 <p>Texoflex N-Eupex</p>		 <p>Omega Viva Elpex</p>			 <p>Hateco Zapex</p>	 <p>Arpex Addax</p>	 <p>Hydroflow Fludex</p>	
Max NomT (kNm)	1000	1000	20	60	40	5	15	1000	100	1000kW / 1500tr	2500 kW / 1500tr
Elastic elements								/	/	...	/
Torsional Elasticity T_N	*	*	**	**	***	****	***	0°	0°	/	/
Δe Axial	*	*	**	**	***	***	***	**	*	*	
Δr Radial	*	*	***	***	****	****	****	***	*	*	***
α Angular	*	*	***	***	****	****	****	**	*	*	****
Inspection	1x year	1x year	1x year	1x year	1x year	1x year	1x year	1x year	1x year	1x year	Inspection free
Maintenance	Elastic elements	Elastic elements	Elastic elements	Elastic elements	Elastic elements	Elastic elements	Elastic elements	Elastic elements	Disks	Repair	Maintenance free
Radial Removable	+	+	2 Parts : 0 3 Parts : +		+	+	+	0	+	0/+	+
Installation cost	*	*	*	*	**	**	**	***	***	***	****
Older types elastic elements	 <p>penco</p>		 <p>Debex Eupex</p>								
Other types											

