



*Transmission  
solutions for  
heavy industry*

- Maintenance
- Replacement
- Engineering
- Applications

**MGH**  
**MAINTENANCE & GEARS**

# Company Presentation

**2025**

# MGH at a Glance



**Industrial Gear Units, Geared Motors, Couplings and Components**  
Maintenance, retrofit, upgrading, installation, engineering of all types of gear boxes for every application



**Financials**  
Turnover of approximatively 10 M€



**People**  
40 professionals work together at MGH



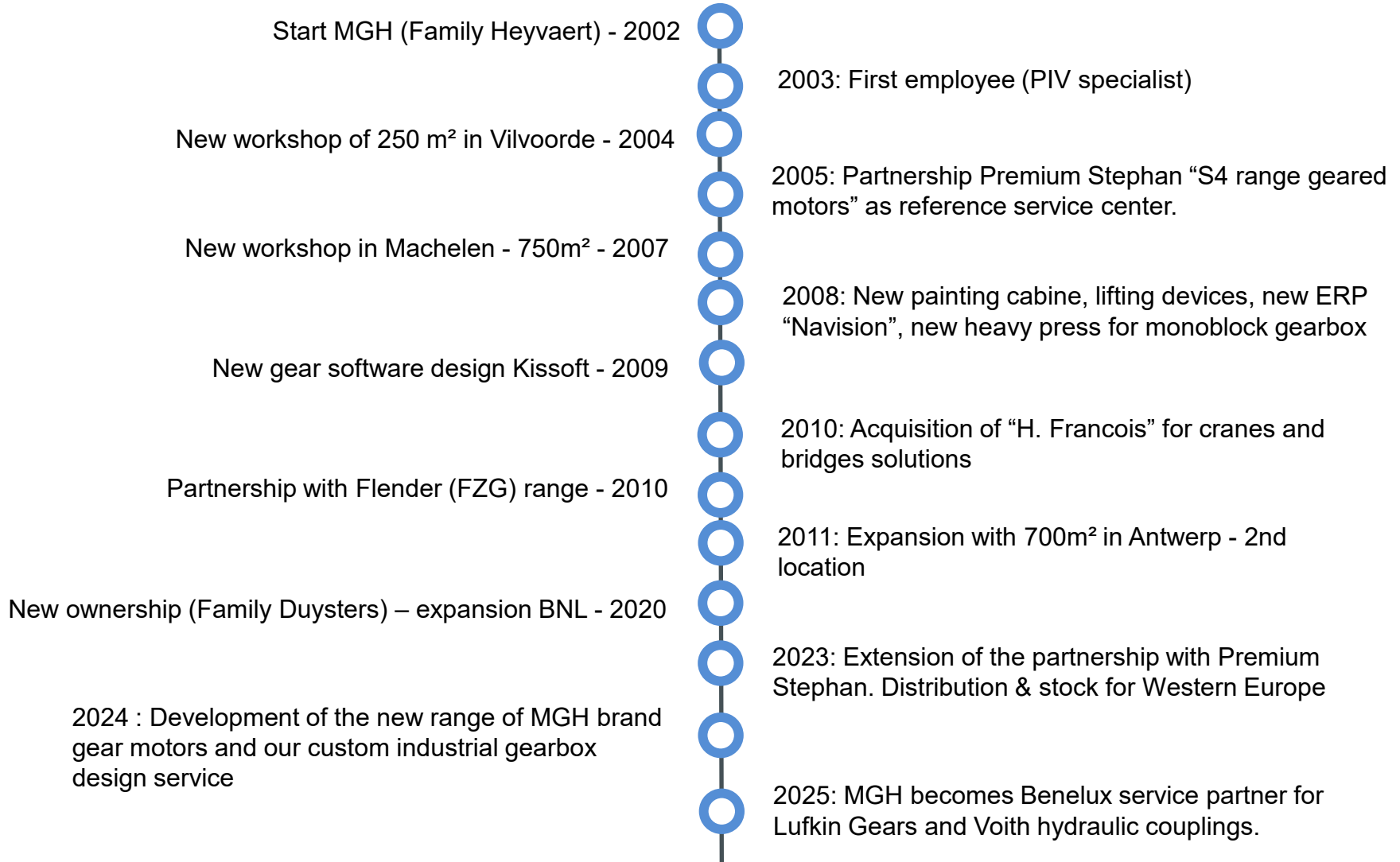
**Service centers**  
MGH has 2 service centers in Belgium : Antwerp and Machelen



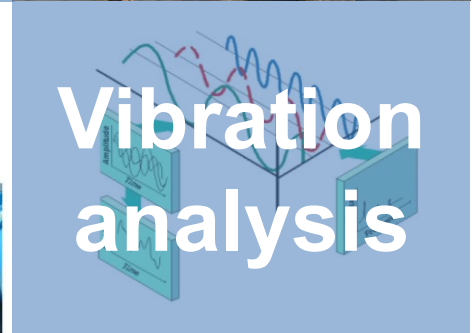
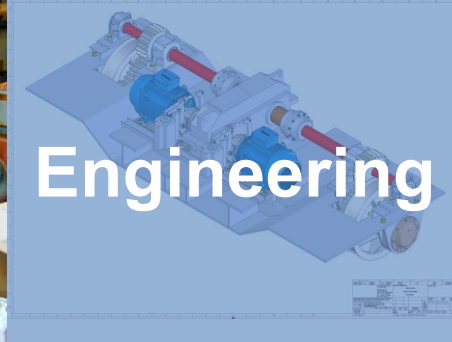
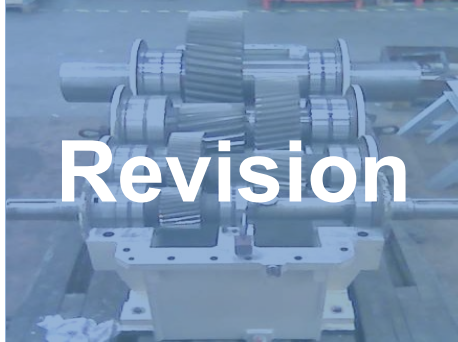
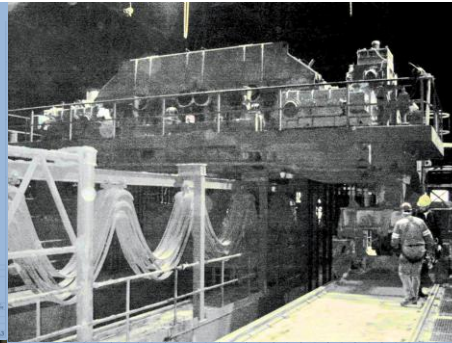
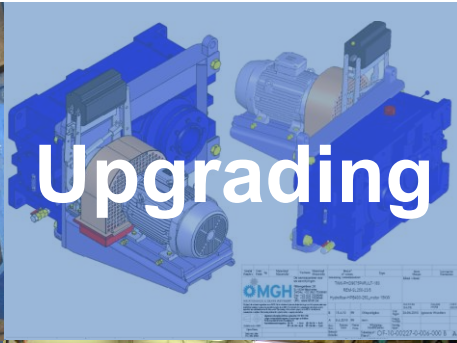
**1 Family**



# Our Company Through Time



# Our core Capabilities



# Why MGH

---

Brand independent service supplier for sustainable solutions of heavy electromechanic drive trains

1 stop shopping



**Industrial Gear Units, Geared Motors, Couplings and Components**



**Design knowledge of bearings and gears**



**24/7 Service**



**Service centers**



**Healthy company**



**Drive systems / Gear box engineering**



**40 professionals**



**Service vans - on-site maintenance - (Dis)Assembly**



**Extensive stock critical parts**



**1 Family**

# MGH Coverage

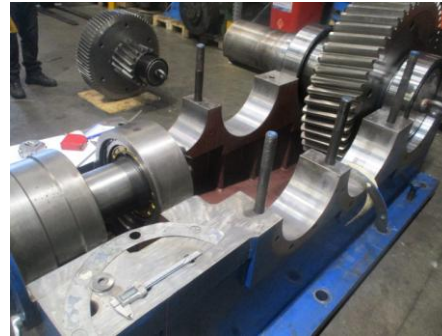


- ✓ Belgium
- ✓ Netherlands
- ✓ Luxemburg
- ✓ France
- ✓ Germany

● Service Centers MGH

● Service Partners MGH

# Revision of Industrial Gearboxes



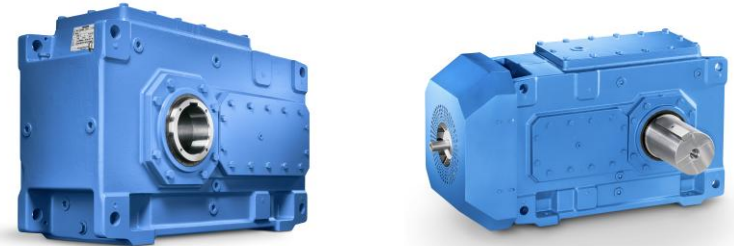
# Sales Geared motors and Industrial Gear Units



## FLENDER



- MI-MP-MK geared motors
- Interchangeable
- IEC adaptor
- Kit build – assembled in 20 min
- 100% customized

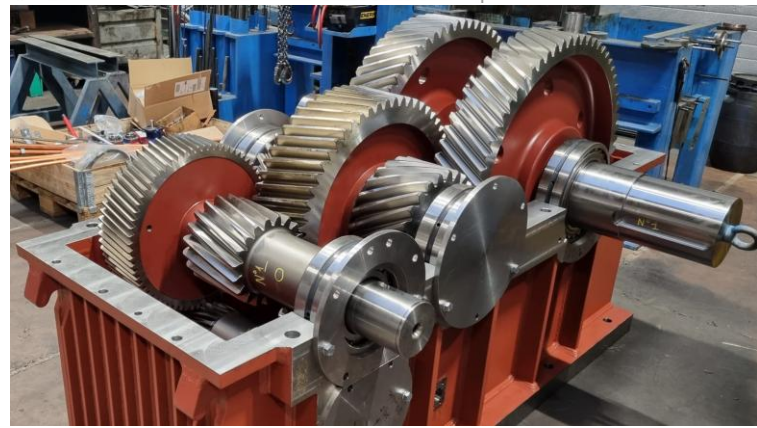
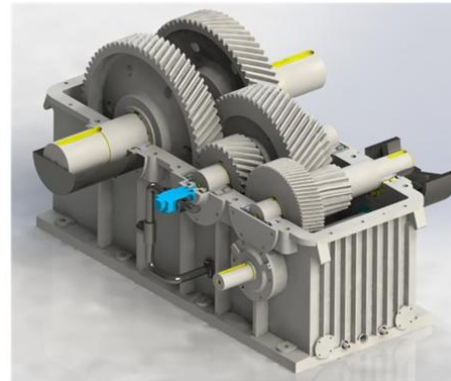


- Quality: Strong housing - high performing gears
- Made in Germany
- Short delivery times for standard gearboxes
- Wide range of options available
- Top service through MGH as recommended service partner for Belgium - Luxemburg



# Sales Industrial Gear Units

customized solutions designed and  
manufactured by **MGH**



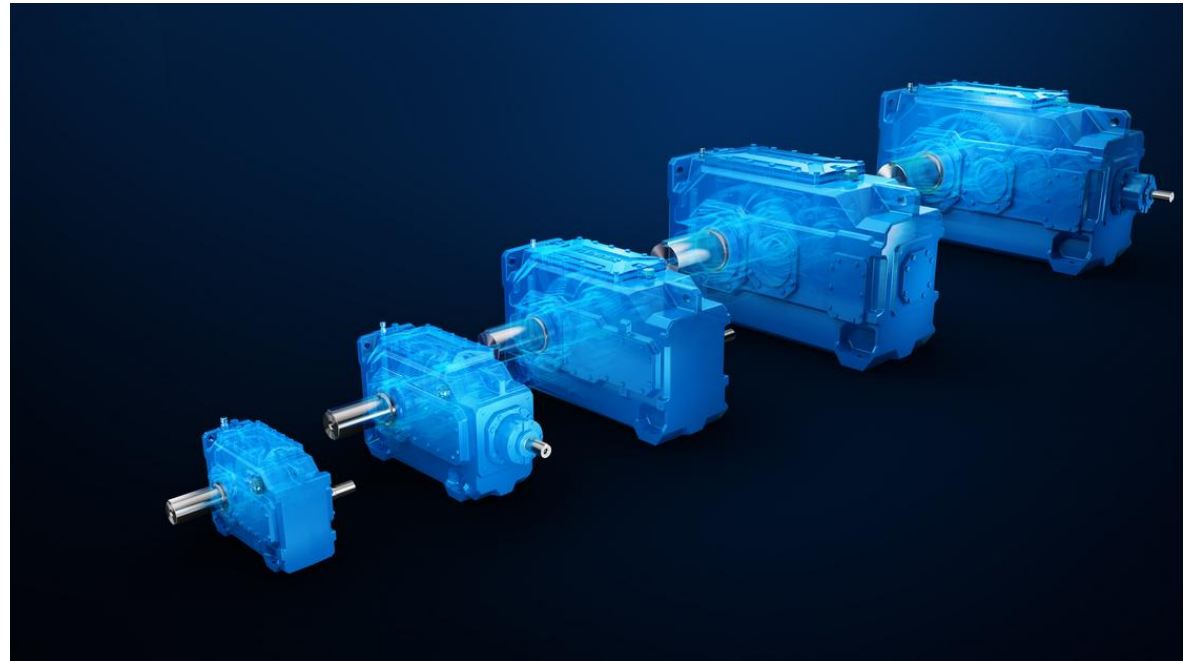
# Industrial Gear Units repair

MGH your official service partner



**FLENDER**

SERVICE  
Partner



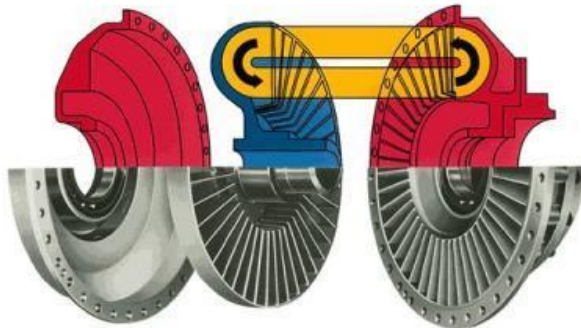
# Industrial High Speed Gear Units repair

MGH your official service partner



# VOITH Fluid couplings repair

MGH your official service partner



ttmet.net

**VOITH**



# Sales Couplings

## Pin & bush coupling



Pencoflex

Rupex

## Pin coupling



Tex-o-flex

N-Eupez

## Gear coupling



Hateco

Zapex

## Highly flexible coupling



Omega

Viva

Elpex

## Fluid coupling



Hydroflow

Fludex

## Magnetic coupling



## Other



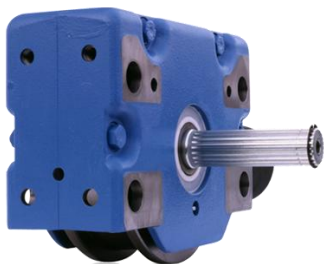
Rotex

Barrel

Lamel coupling

Composite coupling

# Sales Components

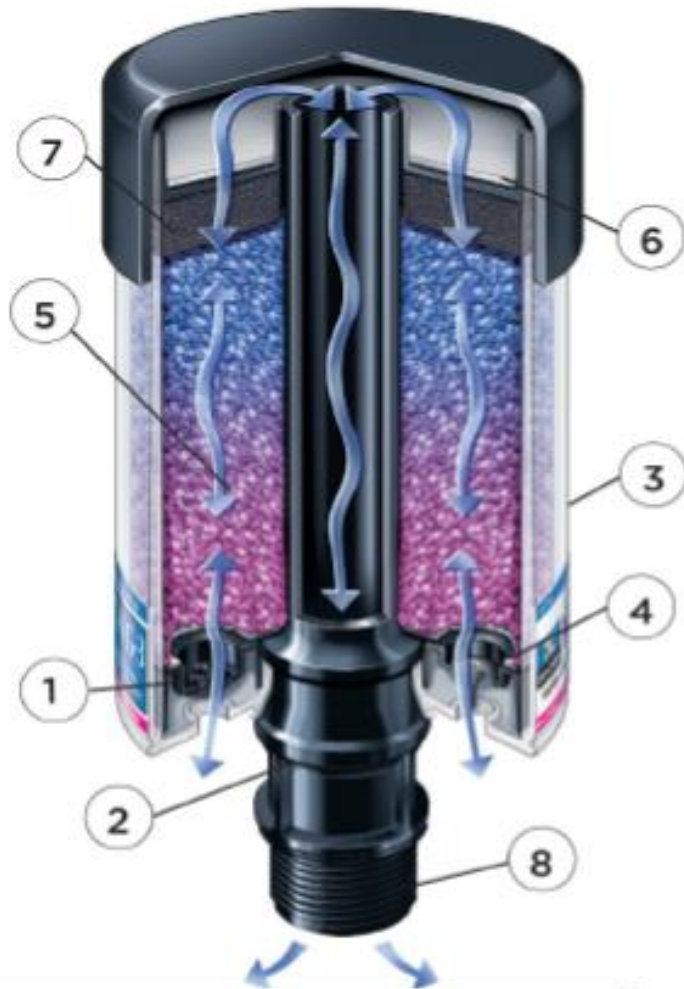


ELDRO<sup>®</sup>

Exclusive authorized  
EMG service center



# MGH Breather



# MGH AIQ



Gardez vos réducteurs critiques sous contrôle

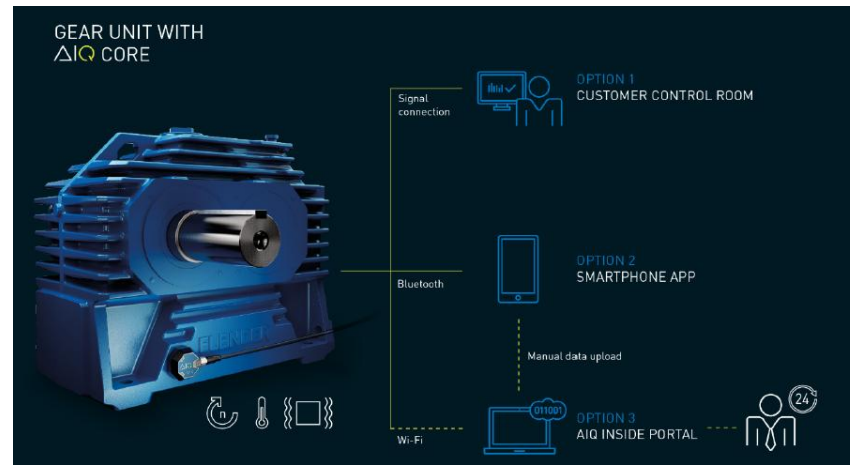
- Mesure des vibrations
- Mesure de la température
- Mesure de vitesse

24 heures sur 24 / 7 jours sur 7

Facile d'installation

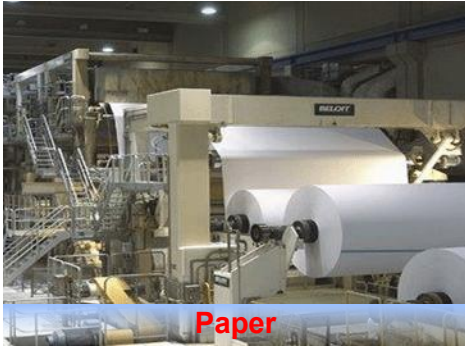
Rapports détaillés sur demande

Adaptable sur les réducteurs Flender  
et autres marques également.





# Our core Markets



**Paper**



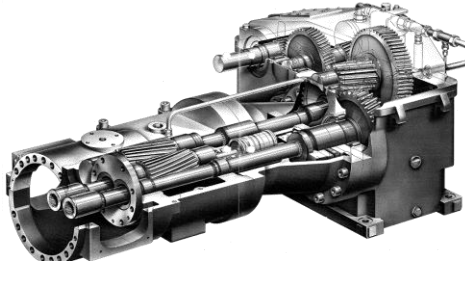
**Water purification**



**Container handling**



**Steel**



**Plastics**



**Industrial cranes**



**Bulk handling**



**Chemistry**



**Cooling towers**



**Cement**



**Sugar**



**Mining**

A hand is shown inspecting a stack of metal gears in a factory setting. The gears are arranged in a row, and the hand is positioned to touch one of them. The background is a blurred industrial environment with various machinery and components.

**Our Promise**

**Quality delivered on time**

# Example

Industeel

Industeel is an  
ArcelorMittal company

ArcelorMittal



**Repair of a lifting gearbox on an overhead crane including handling**

# Example



No. **P220636**

 **MGH**  
MAINTENANCE & GEARS HEYVAERT

Service 24/24 :  
+32(0)2/753.00.40  
info@MGH.be  
www.MGH.be

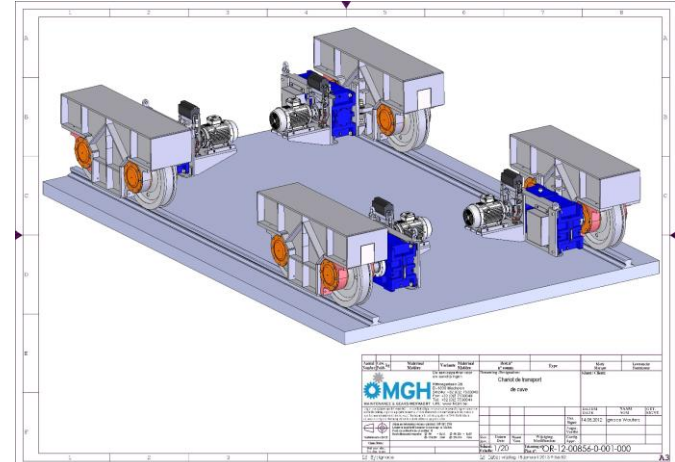
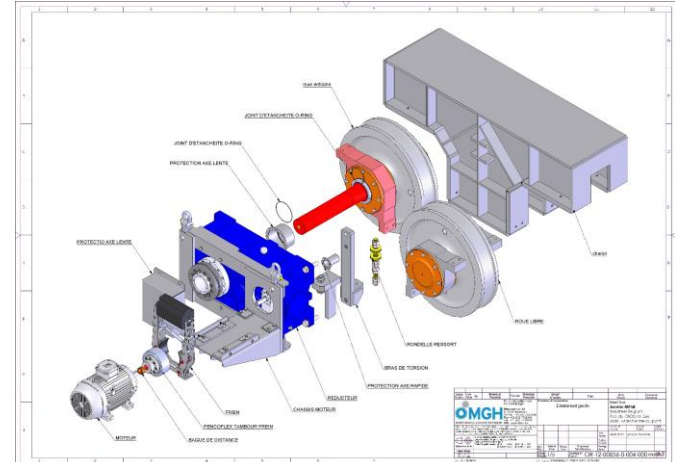


**Hansen HP1 gearbox repair**

# Example

Industeel

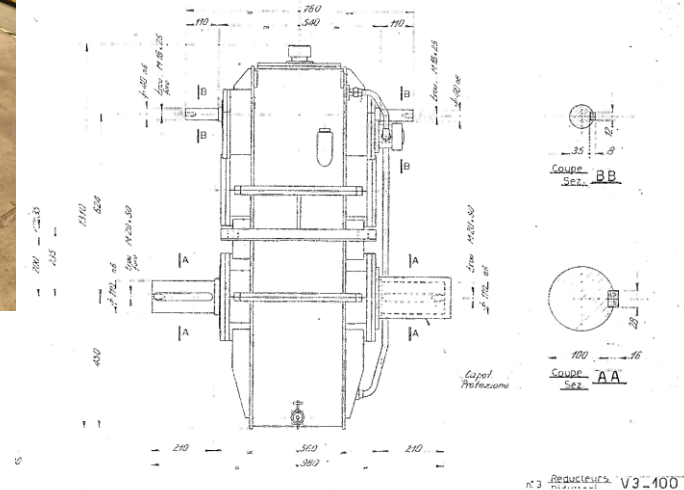
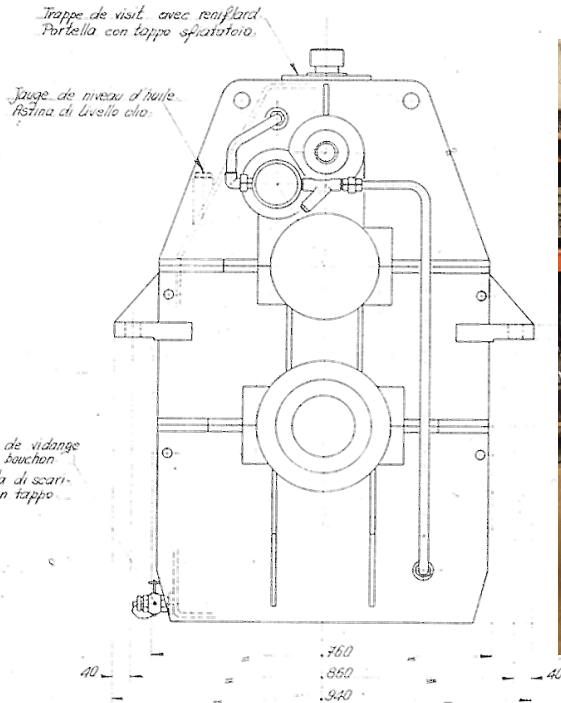
Included in an  
ArcelorMittal company  
ArcelorMittal



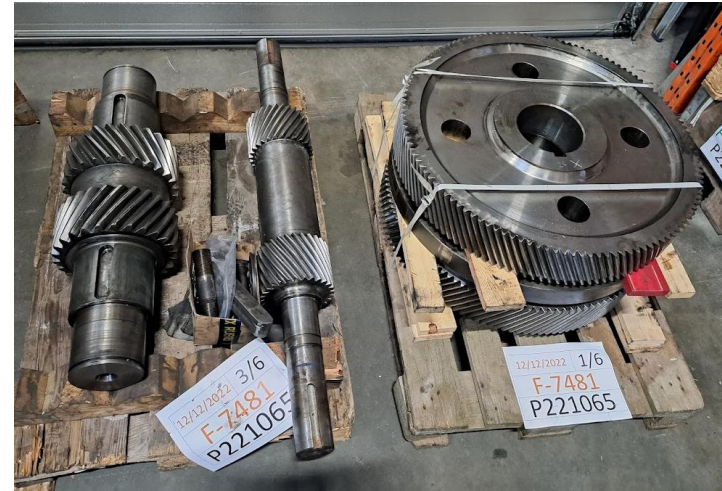
**Complete revamping on a transfer trolley in an electric steel mill**



## custom solutions manufactured by **MGH**



# Example



**Repair of an old extrusion gearbox in  
the plastics industry**



# Example



## FLENDER



**study, supply and installation of the complete transmission line of a ball mill in the chemical fertilizer sector**

