

Become a player in the
green revolution

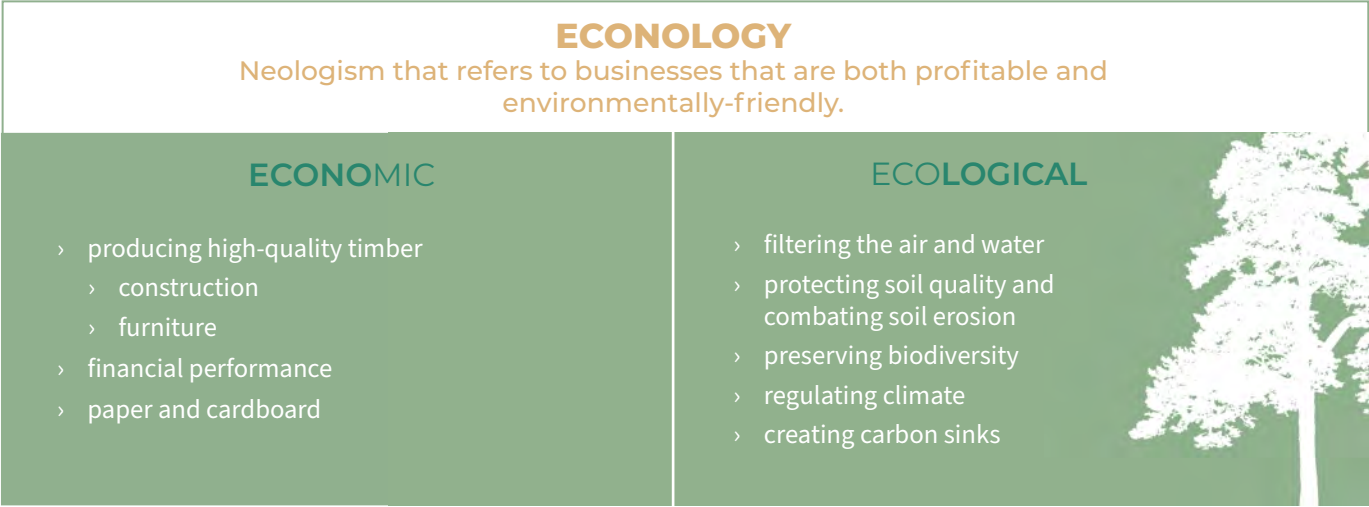
THE SLB GROUP

A company actively committed to the planet

At SLB, we understand that forests provide us with invaluable environmental and economic services. We do everything we can to protect and develop them. For over 30 years, nature-based solutions have been central to our work to tackle the challenges facing us.

A FOREST-FOCUSED MODEL

Each day, we strive to improve our forestry practices and make them more sustainable, and we develop our business based on the principles of **Econology**.



OUR HISTORY

Stéphane LEDENTU founded SLB as a timber trading company in 1991. He had a light-bulb moment in Asia, realizing how illogical it was to cut down mature trees to make cheap furniture. He decided to invest in econology to address the timber industry’s growing needs whilst avoiding the use of native species.

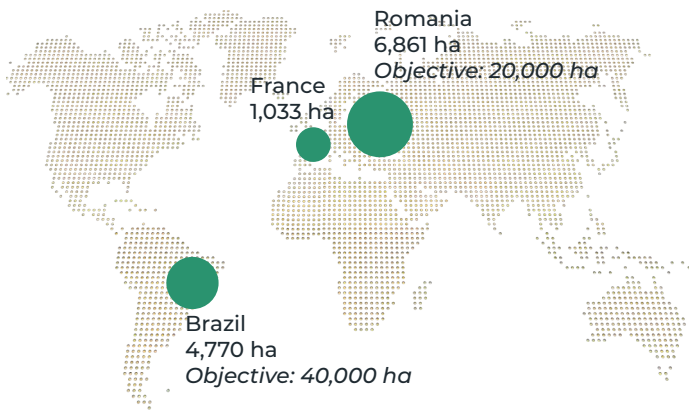
So, from 2007, SLB expanded its role internationally, through the acquisition, creation and sustainable management of forests.

TECHNICAL AND ECONOMIC FORESTRY EXPERTISE

- › Background and experience in its forestry programs in France of 32 years, Romania 16 years, and Brazil 15 years.
- › Selecting forests (Romania) and land (Brazil) and performing due diligence on land and sellers through specialized firms
- › Forestry and legal expertise: controls, annual reports, and insurance...
- › Forest management: agronomic engineers who are experts in forestry, regular growth reviews, preventing health hazards.

BUSINESS LINES AND LOCATIONS

- ▶ **Forest promotion and management**
- ▶ **Afforestation**
- ▶ **Carbon sequestration**
- ▶ **Timber trading**

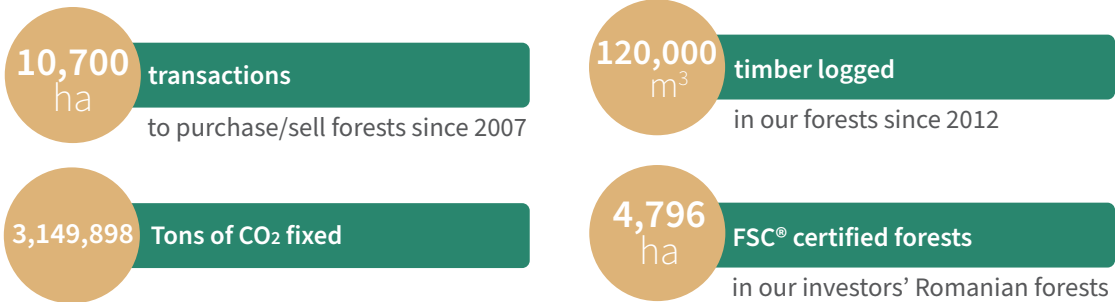


ROMANIA

A unique high-quality forest in Europe

Romania is home to some beautiful forests, protected by strict regulations. SLB's forest management encourages stands of trees of different ages and protects Europe's richest biodiversity.

KEY FIGURES



**Figures are subject to change depending on the Group's activity*



Around fifteen tree species have significant commercial value. Beech, oak and spruce stand out for their available volume and use.

CSR

SOCIAL

ENVIRONMENTAL

- › FSC® certification
- › **Climate change awareness** in forest management plans
- › **Protected forest** plots
- › GHG **emissions reduction** plan
- › Measurement and monitoring of **soil health**

- › Assessment and plan to monitor the **7 Fundamental and Universal Needs®** of employees, service providers and communities.

SUSTAINABLE FOREST MANAGEMENT

To improve performance and encourage annual growth, we carry out thinning operations. Forest stock is increased by preserving high-quality timber and trees with greater productivity.

Natural regeneration and horse logging allow us to work with **respect for ecosystems and soil**.

NATURAL REGENERATION

Natural process to regenerate forest cover and a green process producing shoots that are healthy and have good genetic quality.

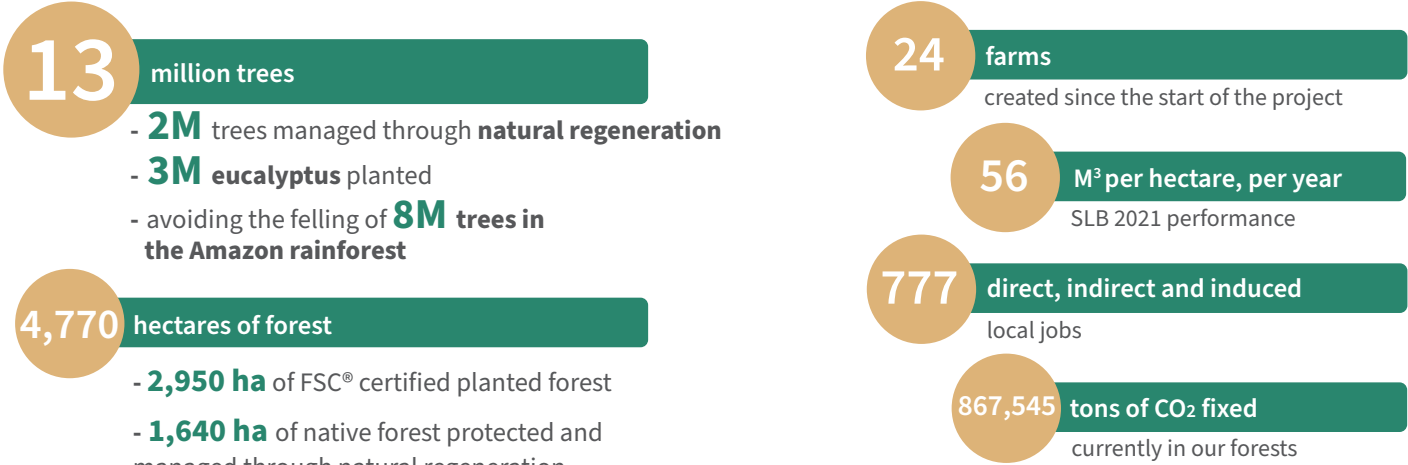


BRAZIL

An innovative, world-first afforestation programme

To meet growing demand for timber worldwide, SLB has chosen to plant fast-growing trees in the State of Paraná, based on a vision combining Man and Nature, **the economy & ecology**: **ECONOLOGIC PROGRAM®**

KEY FIGURES



**Figures are subject to change depending on the Group's*

SUSTAINABLE FORESTRY

Our methods encourage sustainable land management through **soil restoration** and **rebuilding water resources**.

- › thinning to help protect trees with the best productivity
- › planting 1,111 trees per hectare vs. 2,500 for an intensive growing process
- › 20-year growth cycles vs. 7 years for an intensive growing process
- › 40% of land is made up of preserved and regenerating native forest - creation of **green corridors** - to maintain flora and fauna biodiversity.
- › use of biochar



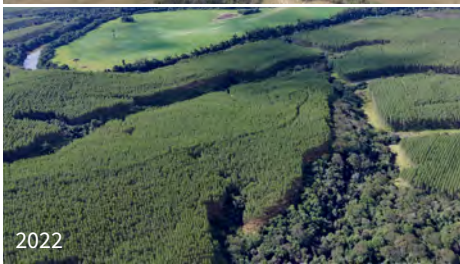
AFFORESTATION

This process involves planting trees to create a forest in an area where there was no previous tree cover, or where there has been no forest for a long period of time.

OUR CRYSTAL EUCALYPTUS TIMBER

Our unique know-how demonstrates that eucalyptus is a “strategic forest tree*”

Know-how	Quality criteria
<ul style="list-style-type: none">› selection of species and plants	<ul style="list-style-type: none">› significant density› light colour (aesthetics)
<ul style="list-style-type: none">› pruning and thinning methods	<ul style="list-style-type: none">› large diameter› no knots› no cracks
<ul style="list-style-type: none">› controlled growth in shadow and light management	<ul style="list-style-type: none">› even wood: straight and cylindrical



**Bernard MARTIN*

Become an SLB Group partner to make a socially responsible investment

CARBON CERTIFICATION

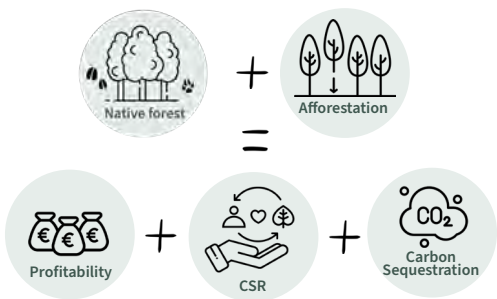
SLB forests are **high-quality carbon sinks** with sustainable sequestration of CO₂ thanks to the opportunities of our timber (furniture, construction).

In 2013, SLB Group became the **first French BUREAU VERITAS certified company** for its carbon fixation calculation tools and methodology.

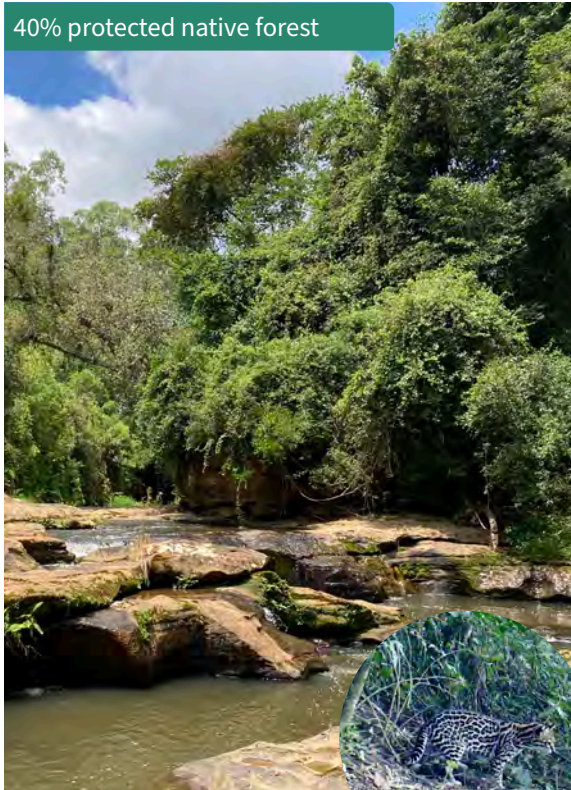
OUR ECONOLOGICAL INVESTMENT PROGRAMMES



SLB offers its future associates the possibility of making a **socially responsible investment (ISR)** and develop their **CSR strategy** by contributing to the planet's carbon neutrality.



40% protected native forest



This year, we have seen ocelots return thanks to the **green corridors** created by our planted forests linking native plots of forest together.



60% planted forest



14 year old forest

CSR

ENVIRONMENTAL

- › Planting on land that was degraded by intensive agriculture
- › **Protecting biodiversity** through the protection and **natural regeneration** of native forest (**1 ha** for each **1.5 ha** planted)
- › **FSC®** certification of all programmes
- › **Soil restoration** and **rebuilding water resources** thanks to lower plant density per hectare and longer growth
- › **Carbon method certified** by Bureau Veritas
- › Measurement and monitoring of **soil health**

SOCIAL

- › **Training** of service providers
- › **Dialogue and co-construction with local communities** and public institutions
- › Assessment and plan to monitor the **7 Fundamental and Universal Needs®** of employees, service providers and communities.



GENESIS



Our history

1991

- › Creation of the SLB Group, a logging and timber trading company.

1999

- › PEFC Certification

2002

- › Creation of European Forest®.

2007

- › Opening in Romania and creation of Eastern Forest®.

2008

- › Opening in Brazil and creation of Brazil Forest®.
- › Acquisition and planting of pilot farms in Brazil'

2011

- › Creation of the **ECONOLOGIC PROGRAM brand** with **Brazil Forest®** in order to reduce greenhouse gas emissions and help protect the environment

2015

- › FSC® certification in Romania

2016

- › FSC® certification in Brazil

2018

- › Bpifrance Excellence Label

2020

- › Creation and launch of the 1st **SOLUTION ECONOLOGIC PROGRAM (SEP1)**
- › Renewal of **Bureau Veritas** certification for the carbon fixation calculation method

2021

- › Sale of carbon units with our partner **SWEEP**
- › Social and environmental impact of the Brazilian project measured by **KINOME**

2022

- › Launch of the **SEP2** programme
- › Social and environmental impact of the Romanian project measured by **KINOME**
- › Partnership with **MIROVA** (Natixis) and first investment of LDN fund with SLB in Paraná, Brazil.

2023

- › Launch of the **SEP3** programme
- › Exceptional **EIB** financing of €9.5 million to continue the protection of biodiversity in Romania.



THE SLB GROUP

Headquarters: 121 Avenue des Champs-Élysées - 75 008 PARIS

Offices: 6 Rue du Château, 50160 Torigny-Les-Villes - Tel: +33 (0)2 33 77 47 36 - ledentu@slbsa.com

www.slbgroupe.com - www.brazilforest.fr
www.easternforest.fr - www.europeanforest.fr