



The Landscape model fountain-composter

Agility at the service of local composting.



The fountain-composter is the real solution for local and collective composting

- No bad smells
- No rodents
- No need to mix manually



The fountain-composter is a long lasting furniture

- Robust and aesthetic design with elegant curves
- Noble materials and adaptable colours for an easy integration into the landscape
- The fountain create a friendly atmosphere thanks to its design and the sound of water



The fountain-composter is smart

- Temperature and equipment monitoring
- Logging of events and measures
- Optimization of mixing to reduce composting time by half



Why compost on site?

To comply with :

- European circular economy directive of 2020
- SDG 7 - Goal 11: Make cities inclusive, safe, resilient and sustainable

Pecuniary gain

Cost control, autonomy in waste management, to avoid the cost of collection

CSR policy

Reduction of the ecological footprint by avoiding collection and industrial treatment and by creating credit carbon sinks in the balance sheet). Accountability of users.

They support us



The Landscape model fountain-composter

Performance & Qualifications

- Long lifetime > 20 years !
- 12VDC power supply
- Certification by a control office
- Operation with hygienization follow-up



For who ?



Institutions, Companies & Administration

For public or private facilities with a restaurant, the fountain-composter is usually installed outside near the kitchen.



Public spaces & Residential communities

The fountain-composter is a useful, practical, and aesthetic furniture that can be installed in the city as in the countryside, in a large avenue, in a park or in a village square.

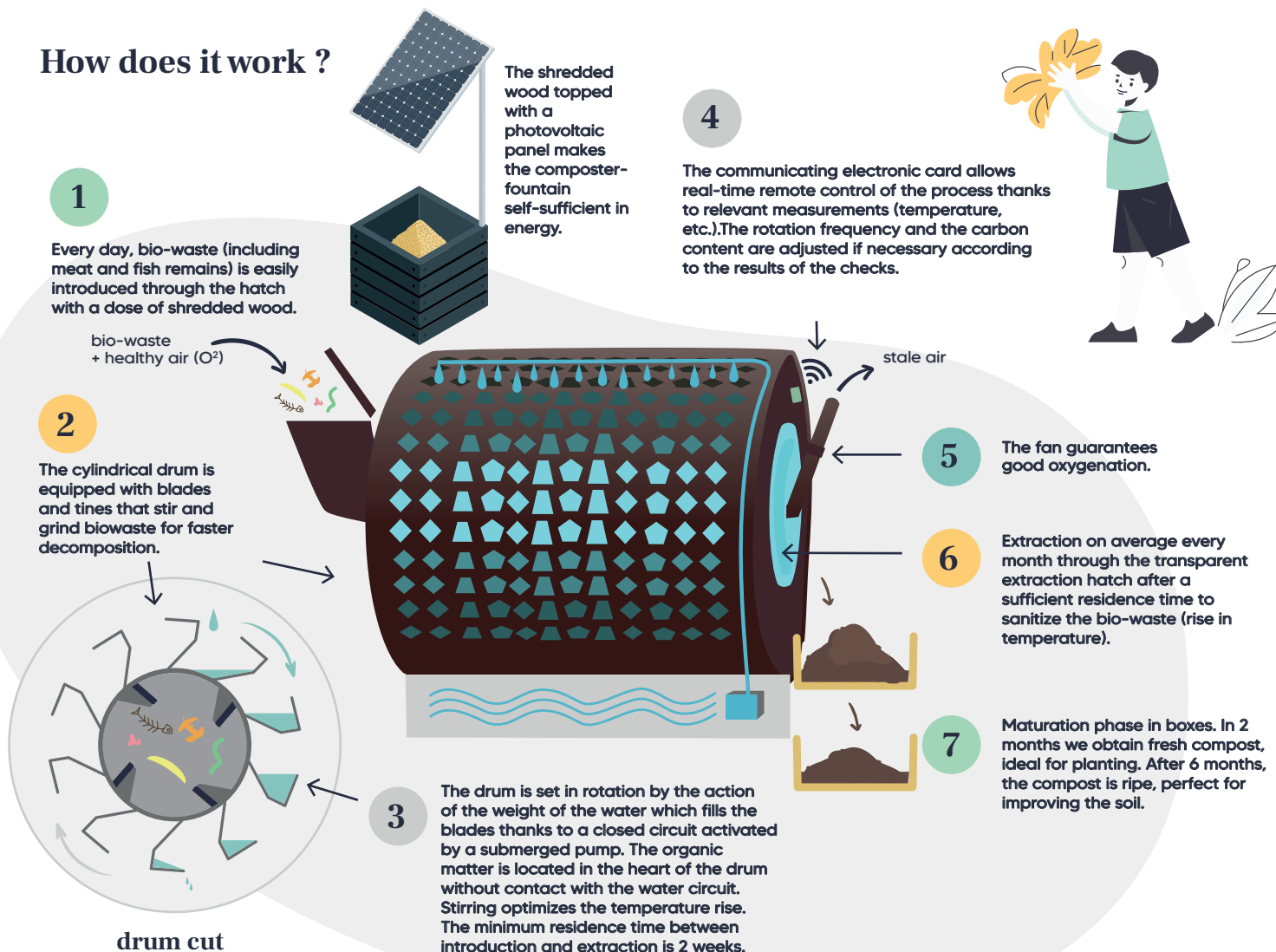
The goal is to create a green area and to encourage the contribution of families.



Tourism infrastructure

Waste from hotels and campsites increases tenfold in summer. The composter-fountain is the solution for managing your bio-waste without labor time, without nuisance and involving holidaymakers.

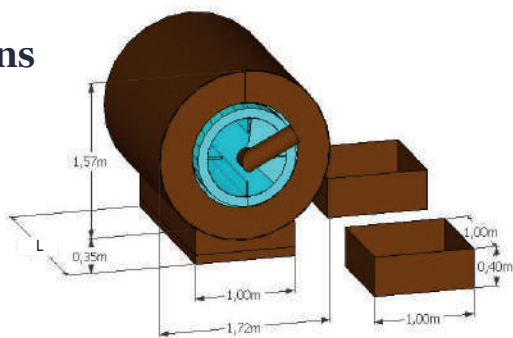
How does it work ?



Landscape patterns

CFP 500

12kg of bio-waste per day
150 daily meals
About 60 households
2kWh/month
PV panel 0.8x0.4m
Length L : 1m



CFP 1000

30kg of bio-waste per day
375 daily meals
About 150 households
3kWh/month
PV panel 1x0.5m
Length L : 2m

CFP 1500

50kg of bio-waste per day
600 daily meals
About 240 households
4kWh/month
PV panel 1.2x0.6m
Length L : 3m

Warranty

2 years



Special finishes

- Choice of paint colors and grid patterns
- Solar panel
- Shredded wood box
- Customizable bio-bucket
- Planters, benches, rainwater collector...

Accessories

- Solar powered
- Shredded container
- Modular ripening corridor
- Customizable biosels
- Planters (shape on request)
- Bench (with integrated rainwater collector)



Myth #1 : Composting generates bad smells

Not with the fountain-composter! Thanks to the mixing of bio-waste and on-board automation, the organic matter degradation process is optimized without unpleasant odors.



Myth #3 : Running a composting area takes time

Not with Fountain-composter ! The operator no longer has to stir the bio-waste with a pitchfork. The waterwheel automates the rotation and thus the mixing. Operation limited to the introduction of wastes and the collection of compost.



Myth #2 : Composting attracts pests

Not with compost-fountain
The drum in which the biowaste is treated is not accessible from outside and the compost in maturation is no longer interesting for field mice, rats, wild boars or even snakes...



Myth #4 : It takes at least a year to get compost.

Not with the composter! Thanks to the mixing of the material, the time generally required to obtain compost is reduced to less than 3 months under optimal degradation conditions.

Myth #5 : People don't know what to do with the resulting compost...

There is no need of compost (especially in dense urban space). Citizens change today and make efforts to make the cities more habitable : communal gardens, rooftop gardens, urban farms. We help you to find the right partners in the upstream phase. Thus begin creation of social links and reduction of the ecological footprint...



How to install a fountain-composter ?



Compost Motion



History

- 2019** Patent of fountain-composter and creation of the company.
- 2020** Prototyping and test phases
- 2021** First Installations in Montpellier : Lanscape model in a health center and Ecoactor model in a business school.
- 2022** Industrialization of production in ecodesign - Made in France.



Our values

Sobriety thanks to an energy-efficient device.

Eco-responsibility thanks to a local production process and mastery of the product cycle and the materials that compose it.

Inclusion of people with disabilities in manufacturing.



Production

The structural parts are prepared in a metalwork company in Montpellier.

The electrical and hydraulic equipment is made by a work assistance establishment

The Team !



Arthur, The founder

My ambition is to remove the obstacles to collective composting thanks to a product that combines aesthetics and technical agility.



Cécile, The communicator

I let people know that the composter is the ideal tool to effortlessly reduce everyday organic waste.



Frédéric, The technical expert

I developed the electronic card of the composter. According to me, the green transition requires low-tech tools.



Gaspard, The 3D designer

Apprentice in work-study, I draw the composting areas in 3D to allow customers to project themselves.



Mohamed, The key to everything

Work-study apprentice, I develop my technical and commercial skills.



Matthias, The community manager

Apprentice in work-study, I take care of the administration and I write posts on social networks.



44 rue du Levant
34750 Villeneuve-Lès-Maguelone
contact@compostmotion.fr
06 74 31 08 09

compostmotion.fr