

Comarch HomeHealth 2.0

Customised remote healthcare



Comarch HomeHealth 2.0

Comarch HomeHealth 2.0 is a mobile application integrated with external measuring devices. The solution is used for remote medical care of patients after hospitalization, or who are chronically ill (who must regularly perform tests and be under constant medical supervision, but do not require hospital care) or at risk of developing specific diseases. The application is available in single-user (for a single patient) or multi-user (for many patients) mode, for use, for example, in nursing homes or by health visitors. The solution is designed to provide telemedicine services to patients outside the medical facility, and enables remote contact of patients with the medical environment.

The application guides the user step by step through all measurements, reminds about their execution, analyzes the results and sends them to the Comarch e-Care 2.0 telemedicine platform, where they are verified by medical personnel. The history of measurements is saved in the application, as well as on the platform, thanks to which the patient, caregivers and doctors have access to it. The application is very user-friendly and intuitive, designed for seniors and other target groups. With its support, each patient will easily take measurements independently and correctly.

Devices integrated with the Comarch HomeHealth 2.0 application



Comarch HomeHealth 2.0 and the Comarch e-Care 2.0 platform are class IIa medical devices certified for compliance with MDR Regulation (EU) 2017/745. Comarch S.A. has implemented and certified the quality management system of medical devices ISO 13485.

Functionalities of Comarch HomeHealth 2.0

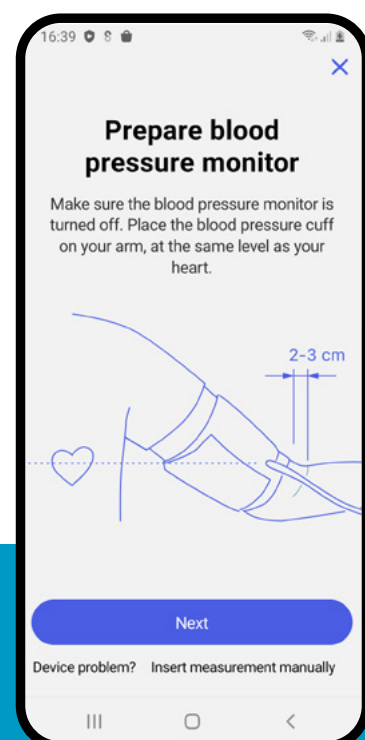
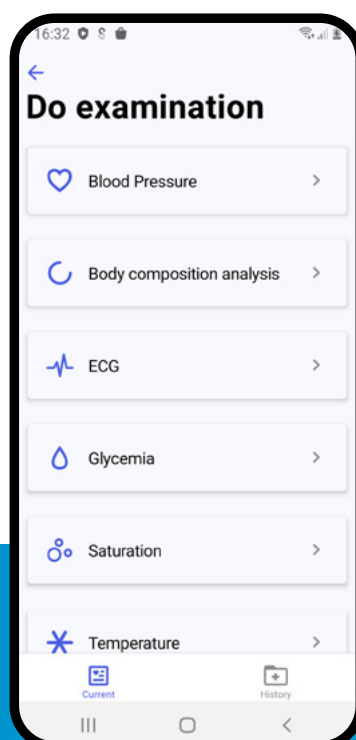
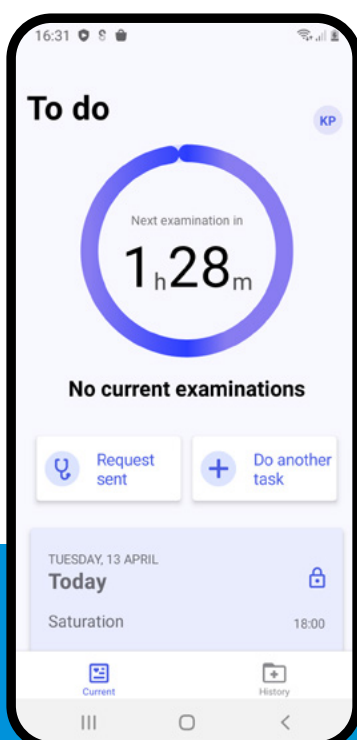
A solution designed for prevention and personalized medicine

Comarch HomeHealth 2.0 gives the opportunity to supervise and monitor your health with the active participation of the patient. The solution is dedicated to people with chronic diseases requiring constant medical care (not in serious condition), including people who do not require hospitalization. Based on our experience, and in cooperation with medical professionals, sample packages for selected disease types have been developed. The HomeHealth 2.0 solution gives the possibility of any configuration of the care regimen, and supervision for any groups of patients and various diseases.

- Diabetes package – the package includes glucose meter, scales/body composition analyzer, blood pressure monitor
- Pulmonary package – the package includes spirometer, pulse oximeter
- Cardiology package – the package includes event ECG recorder, blood pressure monitor, scales/body composition analyzer.

Comarch HomeHealth 2.0 Features

- Automatic transfer of results from measuring devices to the application
- Ability to manually enter measurement results into the application
- Automatic transfer of results from the application to the Comarch e-Care 2.0 telemedicine platform
- Displaying information about any result exceeding the standards assigned by the doctor on the Comarch e-Care 2.0 platform
- Generating alerts on the Comarch e-Care 2.0 platform if results exceed the standards set individually for the patient
- Marking when prescribed medication has been taken on the Comarch e-Care 2.0 platform
- Completing dedicated surveys
- Notifications about the need to perform a test, take medication, complete a questionnaire according to the agreed schedule
- Sending medical documents, laboratory results to the Comarch e-Care 2.0 platform
- Ability to perform tasks outside the set schedule, such as additional examination, taking medication, completing a questionnaire
- Possibility to contact the Care Center
- Viewing test instructions



Comarch e-Care 2.0 telemedicine platform:

The implementation of personalized telemedicine services is possible thanks to the Comarch e-Care 2.0 platform, which allows patient health to be monitored remotely.

Platform functionalities:

- Configuration of test parameters and customized measuring ranges
- Managing alerts if test results exceed standards
- Viewing charts and generating reports
- Creating and administering patient accounts
- Possibility of conducting a video consultation with the patient

How does Comarch HomeHealth 2.0 work?



The doctor orders remote patient care outside the medical facility, adjusts its course and personalizes the ranges of measurement standards.



The patient takes measurements that go to the application. The results are automatically analyzed, then sent to the Comarch e-Care 2.0 platform and verified by medical personnel.

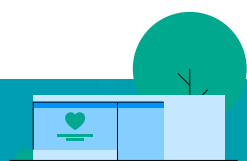


During the remote medical care service and after its completion, it is possible to generate a detailed report on the Comarch e-Care 2.0 platform, which can be presented to doctors during follow-up visits.

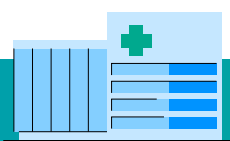
Examples of medical indications for the use of the Comarch HomeHealth 2.0 solution

- Ischaemic heart disease
- Diabetes and prediabetes
- Abnormal heart rhythm
- Condition after myocardial infarction
- Conditions after cardiac surgery/interventional cardiology
- Heart failure
- Hypertension
- Chronic obstructive pulmonary disease
- Bronchial asthma
- Chronic respiratory failure
- Renal failure (CTK blood pressure control)
- Regular monitoring of patients

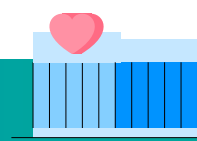
Who can offer remote medical care services using Comarch HomeHealth 2.0?



Sanatoriums and nursing homes



General and specialist clinics, including outpatient clinics, hospital clinics and other medical facilities



Foundations



Private doctors' offices

Benefits for patients



Health monitoring outside the medical facility



Remote follow-up visits



Current information on measurement results



Reminders to get tested and take medication



Regular contact with a doctor



Tailored to individual needs

Benefits for medical facilities



Remote patient care



Real-time patient screening results



Saving time for medical staff



Reduce facility costs



Earn additional revenue



Increasing the effectiveness of therapy



Potential reduction in hospitalisation time



The possibility of quick intervention in case of deterioration of the patient's health

Comarch S.A.

Comarch S.A. is an international company with over 25 years of global experience. We are an end-to-end IT healthcare provider, driven by our customer needs, always ready to deliver a tailored solution while staying true to our core values: being flexible and maintaining the happiness of the end-user. We offer a comprehensive ecosystem of products, consisting of EHR, telemedicine, hospital and medical AI clouds. Integration of these platforms ensures coordinated healthcare and supports patients, their families, and medical personnel.

Copyright © Comarch S.A. 2023. All rights reserved.
15.03.2023, wersja 2.0



www.healthcare.comarch.com