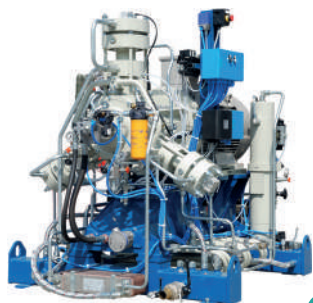


SERIES ST MECHANICAL COMPRESSORS

SAFE is an Italian key player in compression and decompression infrastructure technology. Since 1975 it develops and produces mechanical and hydraulic compressors for biomethane and natural gas in Upstream, Midstream Industrial and Distribution markets.

COMPRESSORS PHYSICAL DESCRIPTION



ST SERIES

Small/Medium size mechanical compressors with up to six cylinders arranged radially. They are suitable for:

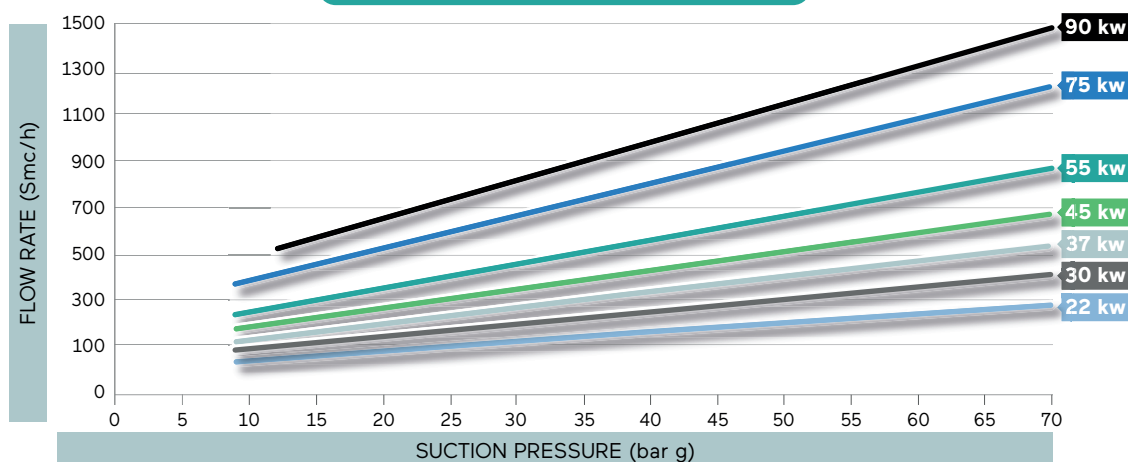
- All application where medium/high suction pressure is required
- Stations with medium/high hourly sales estimates
- Mobile refuelling units (MRU)

DATASHEET (TABLE)

TECHNICAL FEATURES	UNIT OF MEASURE	VALUES
MODELS	-	C60
CYLINDER	No.	3 ÷ 6
STAGES	No.	1 ÷ 4
SUCTION PRESSURE	bar (psi)	8 ÷ 220 (120 ÷ 3,200)
DISCHARGE PRESSURE	bar (psi)	Up to 300 (4,350)
MAX FLOW-RATE	Scm/hr (SCFM)	1,650 (975)
POWER	kW (Hp)	22 ÷ 110 (29.5 ÷ 150)
SPEED	rpm	750 ÷ 1,500
MAINTENANCE PLAN	hours	4,000 in CNG; 8,000 in RNG*
GAS HANDLED	-	Natural gas
CYLINDER FEATURES	-	Water cooled, non-lubricated
LUBRICATION SYSTEM	-	Oil-bath crankcase mechanism
OIL CONSUMPTION	Liters	2 over 100 hours of operation
GAS LEAKAGES	%	0.1% of the rated capacity
CERTIFICATIONS	-	EC/EAC -US

* at minimum speed rate

PERFORMANCE GRAPH



REFERENCE

BY REGION

7
Nam

76
Latam

834
Europe

19
Africa

25
Russia & Cis

4
GULF & UAE

52
Apac

TOTAL
1.017

COMPANY HISTORY

1975 SAFE is founded

1979 Production of the first HYDRAULIC Compressor

1988 Production of the first MECHANICAL reciprocating compressor

1992 Production of the first Oil & Gas Package

2008 Production of the first Mobile Refuelling Unit (MRU)

2010 Production of the first Biomethane solution

2011 SAFE moves to the new HQ in San Giovanni in Persiceto (BO) - ITALY

2017 SAFE&CEC is established through the Agreement between Landi Renzo and Clean Energy Fuels

2022 Idro Meccanica joins SAFE to foster H2 Market. Launch of the first HYDROGEN DISPENSER for filling stations fully designed and produced in-house

COMPANY SQM

ENTIRE PREMISES

27,000

PRODUCTION FACILITY

11,500

OFFICES & SERVICES

2,950

OTHER (parking)

12,550