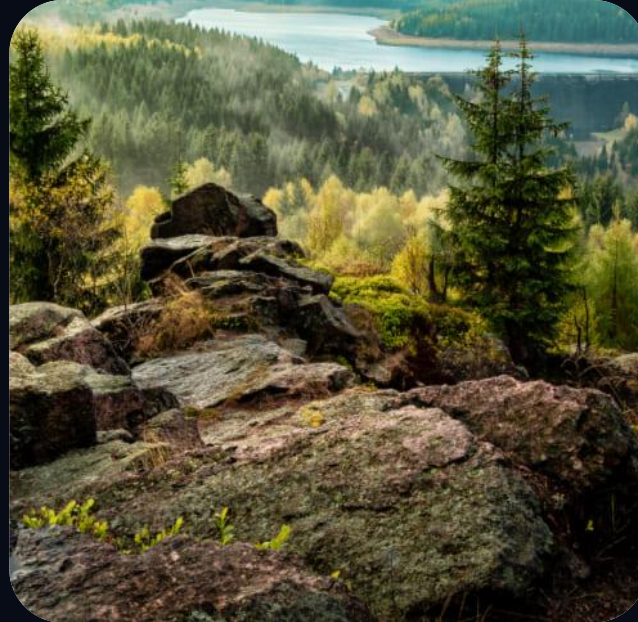


iNex

Efficiency served by
Artificial intelligence

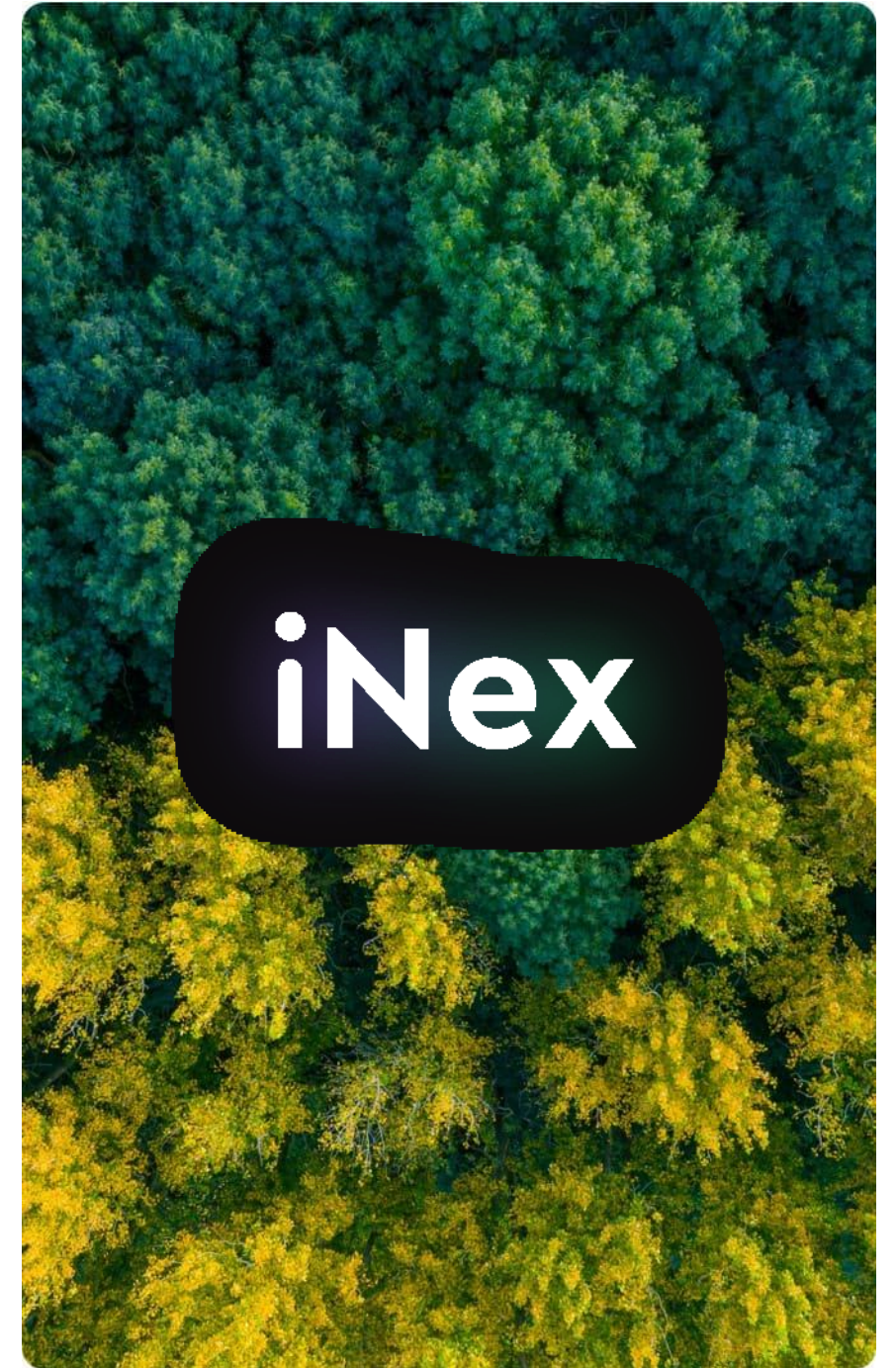


Ai
iNex



Summary

1. Presentation of inex
2. iNex Advance supports industrials in their transition
3. Our platform
4. Work with us
5. Appendices



Who are we ?

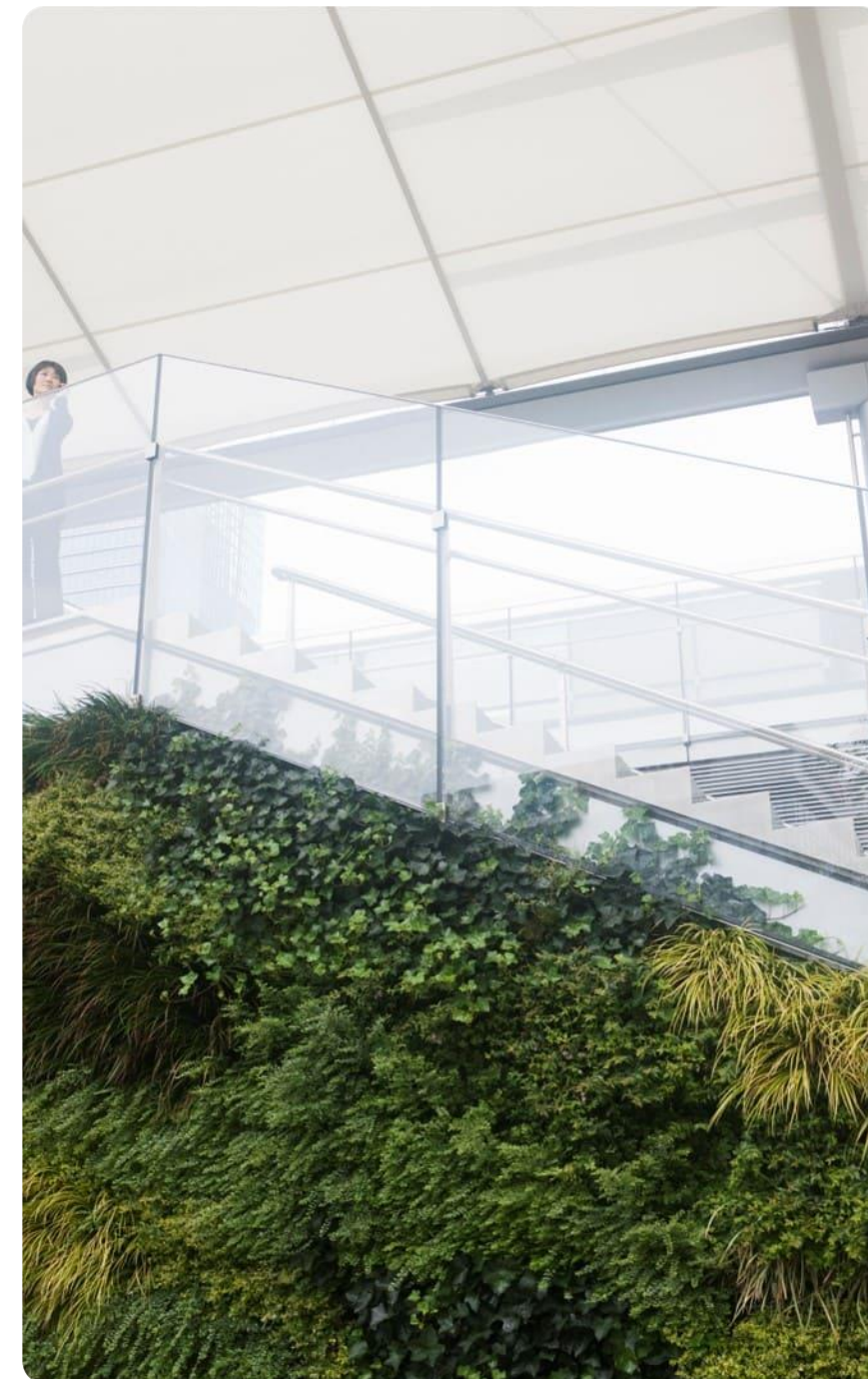
Founded in 2012, iNex was originally a **sustainable development consulting firm** supporting communities and manufacturers in **managing their waste-related issues.**

Taken over in 2018 by Olivier Gambari and Pierre Beuret, **iNex became a technological company that offers digital tools to industrialize marketing and sales** for companies working in the renewable energy and waste sectors: biogas, biomethane, bio-NGV, photovoltaic, strategic materials **by providing a tool based on a complementary team and an aggregation and predictive tool conceived in partnership with the French MIT, Ecole Polytechnique de Paris.**

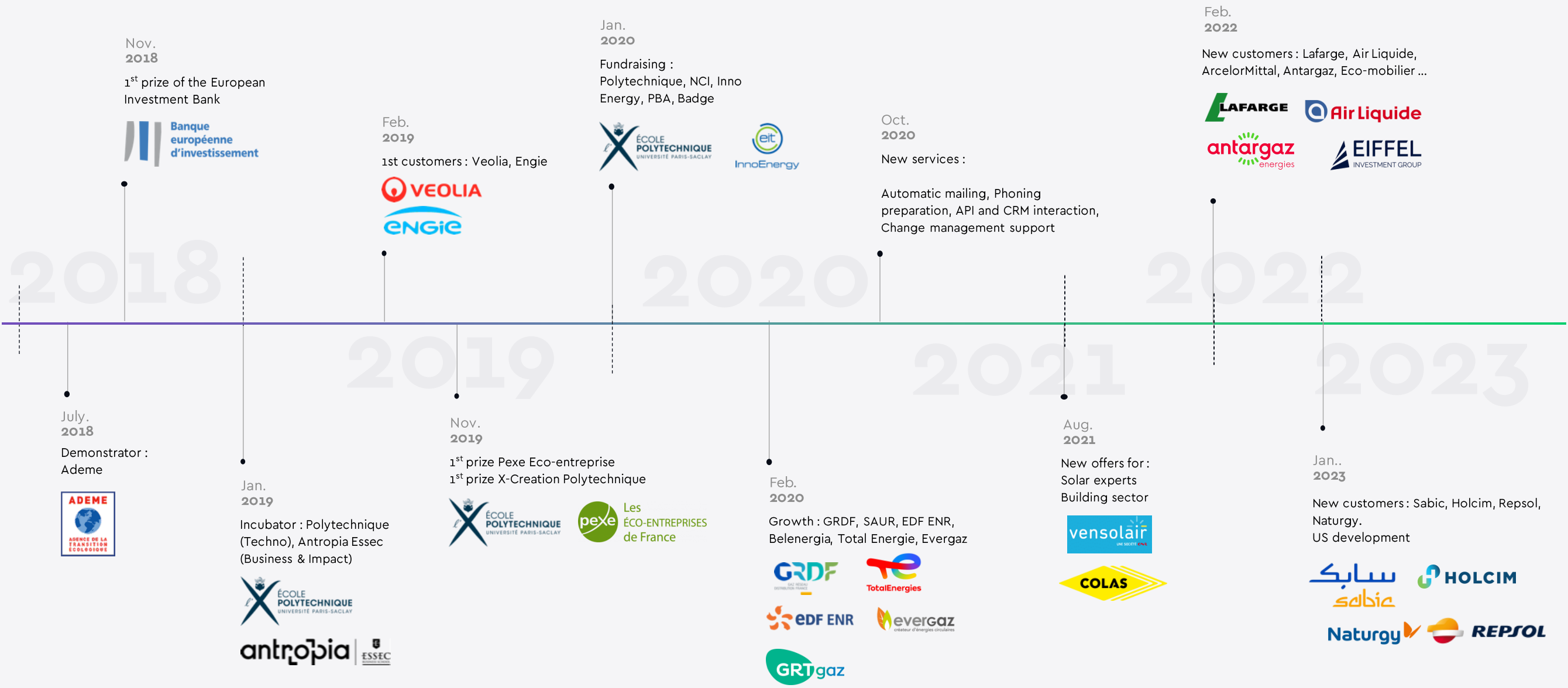
Based on studies from 8 years of consulting and more than 5,000 data sources, **iNex Sourcing is the flagship tool used by the marketing and sales departments of energy companies** (Engie, GRDF, Grtgaz, Evergaz, Belenergia), recyclers (Veolia, Nicollin Group, Baudalet) and manufacturers (Solvay, SAUR).

In 2020, with robust technology validated by the main market players, iNex raises 1M Euro from Inno Energy, Nci, PBA and Badge to accelerate its growth.

2023 marks a new phase with an **acceleration of its activity in the detection of plastic resins in the US and Europe.**



Agility to serve our customers



iNex team

Tech, Skills, Data

"iNex is the connection of complementary talents who have decided to contribute through technology to the ecological transition".

Oliver Gambari

A complementary team



Olivier Gambari

CEO & Founder



Pierre Beuret

COO & Founder



Benoit de Menthère

CDO



Philippe Huger

Mentor



But also an operational team

9

Data Analyst

8

Data Scientist

3

Business developer

They trust us

RECYCLERS & ENERGY PROVIDERS



« Since 2021, the tool allows us to be more efficient in the development phases of our projects and in the management of our units as the operation progresses. Coupled with regular support, iNex ensures a quality service that is as close as possible to the needs of our various users. »



Christina Ferreira
TotalEnergies

« My colleagues and I were impressed by the results presented today: the platform is very intuitive and easy to use, and the statistically calculated volume data is realistic.»



Patrick Durand
Veolia

We created a new business with TotalEnergies

Inex supports **TotalEnergies** in order **to invest in methanization projects** thanks to its solution : **a dedicated team and a digital solution to analyze the investment potential of biogas on large territory**. The goal of these two companies is to diversify their revenues thanks to renewable energies, solar and biogas.

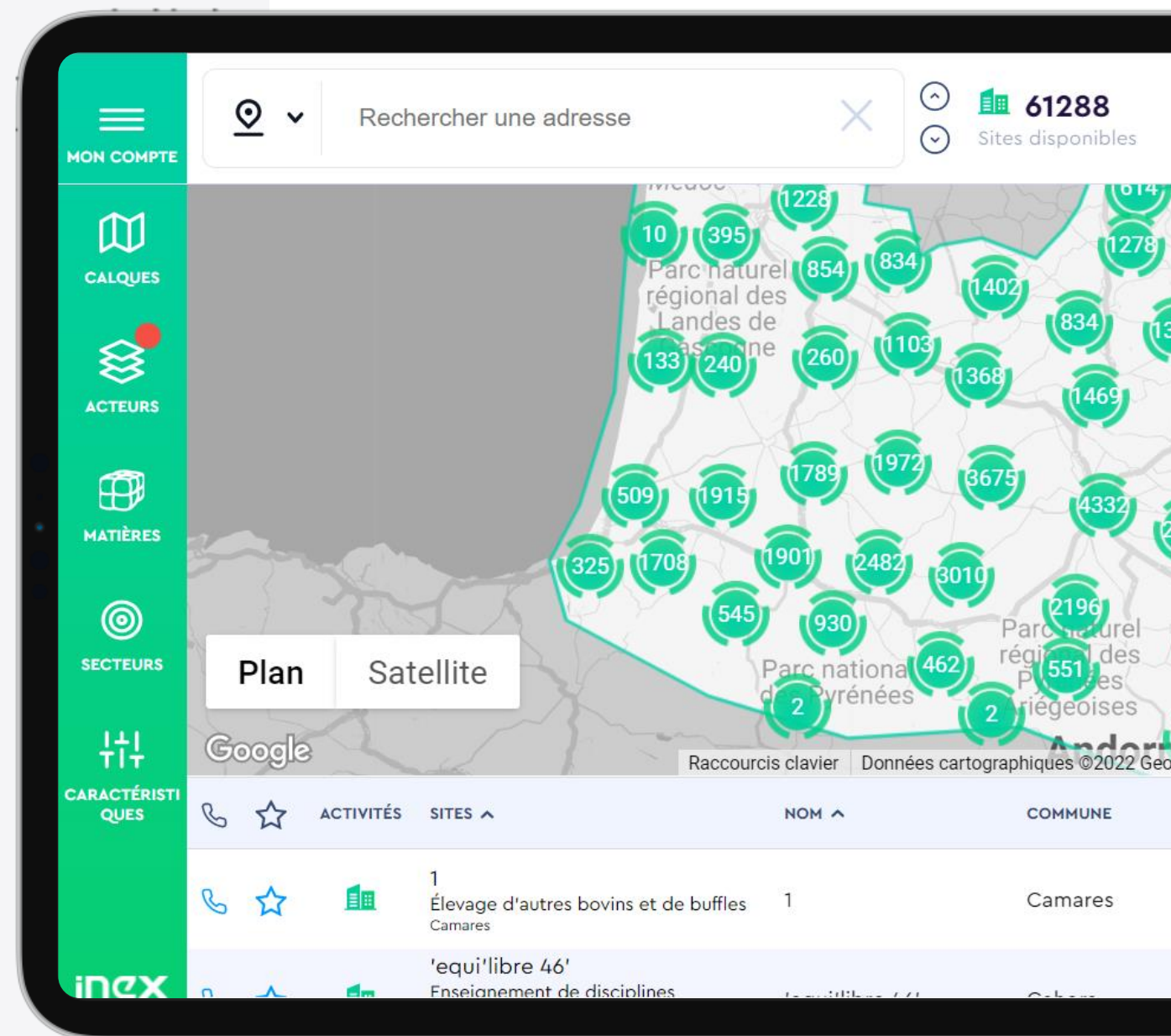
By 2030, 30% of their revenues must be produced from a sustainable energy.

Our solution, **iNex sourcing**, allows them to display all the potential on a territory in few clicks thanks to his unique technology : **relevant biowaste producers, methanogenic power, infrastructure, challengers, potential partners. The quality, quantity and types of biowaste** produce is also available in 1 click in order to understand what technology of methanization fits better on the chosen territory.

Inex sourcing displays and locates the relevant land and parcels, including brownfield sites in order to analyze the most appropriate locations for the **installation of new methanization units**.

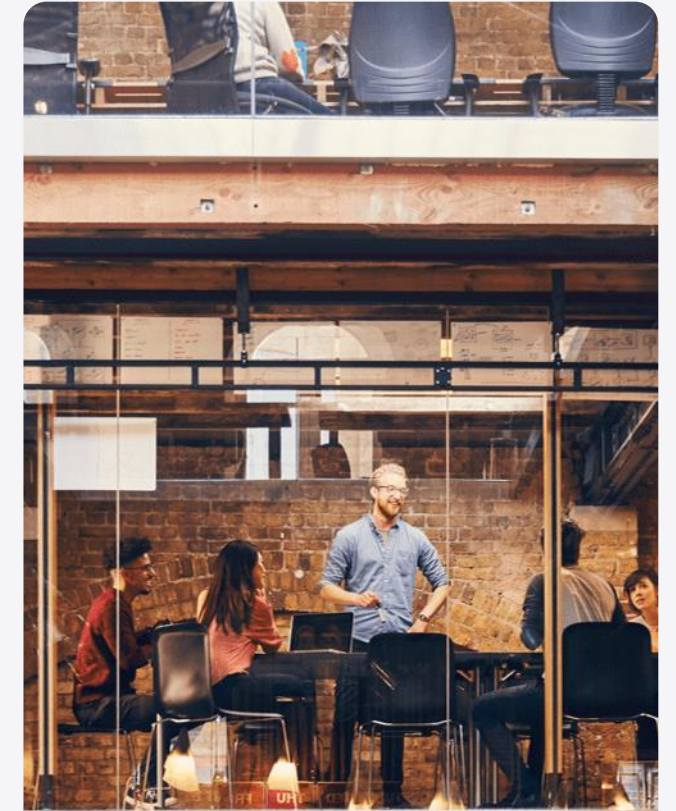
In partnership with our consulting team and the agility of our digital solution :

- **TotalEnergies manage its 3B€ investment in biogas** with our solution in : France, Holland, Germany and India.



iNex

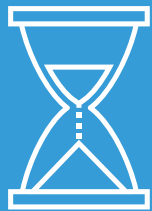
**iNex
advance** supports
Industrials to produce
their own Biogas



Why becoming Biogas producer ?

As part of decarbonization, industrial companies must find solutions to substitute fossil fuels used on their production sites. Biogas emerges as one of them. In this context, data and expertise are essential for making the strategic decisions that will lead to the implementation of methanization units.

Major challenges for project developers and sustainability teams:



**LONG STUDY AND
ANALYSIS TIME FOR
MANY DIFFERENT SITES**



**LACK OF
RESOURCES AND
EXPERTISE**



**LACK OF
INDUSTRIALIZATION
AND AUTOMATION**



DATA UNRELIABILITY

iNex Advance's methodology

We help the industrials to understand the **potential of the area around your plants to invest in a methanization unit.**

As true accelerators, the iNex Advanced methodology support you in this transition by guaranteeing your investments while reducing your risks.

Our methodology consists of 2 phases.

1 The macro analysis: Study the overall potential of your sites to prepare your energy transition strategy.

The goal is to anticipate and define strategy to identify the plants with the greatest potential by analyzing them with **iNex Sourcing** that enables to:

- **Map the organic waste** deposits around your sites all over the world
- **Visualize key data of a territory:** statistics, outlets, infrastructure...
- **Identify the best actors** likely to quickly start biogas production.



2 The micro analysis: An in-depth study per site conducted by our experts, to ensure an effective biogas production.

To implement your strategy, **iNex Sourcing** and **Consulting** would carry out further local studies with the relevant actors for each plants.

For your strategy team

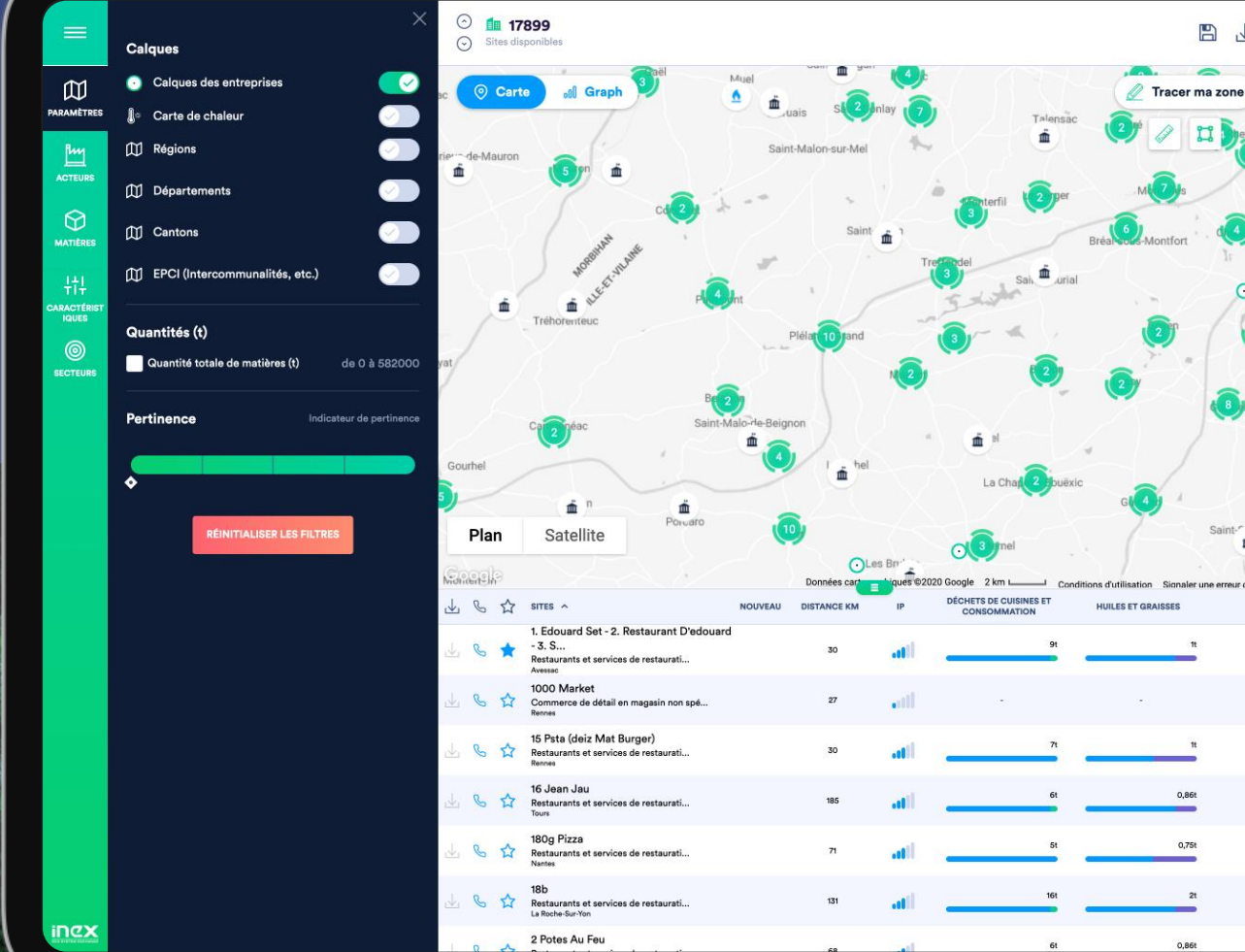
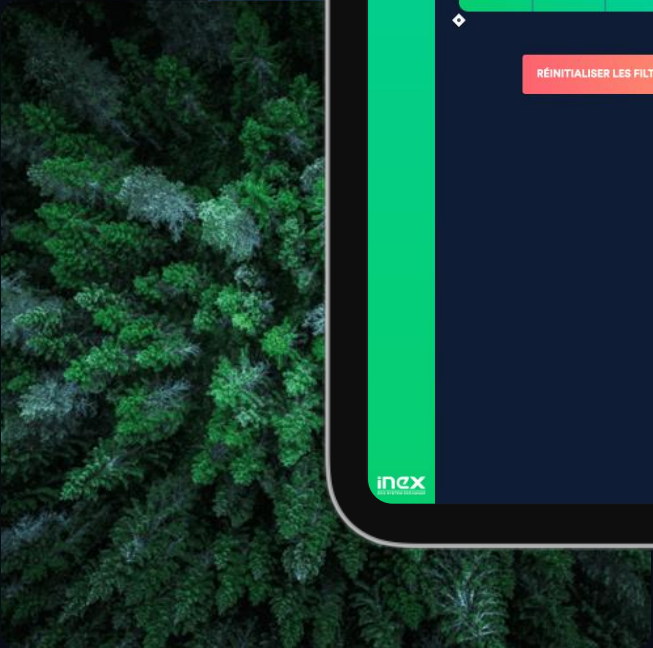
- **Project preparation**
- **Site sizing** (input volume, targets, catchment area)
- **Specification validation** (technical, logistical, economic, regulatory analysis)

For your project team

Guidance by **iNex Consulting** to validate the supply strategy and the methodology to be adopted by

- **Identifying partners** and accelerate the initial contact
- **Obtaining letters of intent** to secure the feedstock

Our platform



Select the relevant actors

Methanizers, Composters, Incinerators, Waste sorting center, Heat and cold networks, Gas networks

Filter on characteristics

PARAMÈTRES

ACTEURS

MATIÈRES

CARACTÉRISTIQUES

SECTEURS

Producteurs

Entreprises productrices

Communes (Ménages)

Collecte sélective sur l'EPCI des bio-déchets pour les particuliers

Fin Contrat Collecte_Année

Fin Contrat Collecte_Estimation

Collecteurs

Collecteurs de déchets ménagers sous contrat public

Collecteurs de déchets professionnels sous contrat public

Transformateurs

Composteurs

Bio-Déconditionneurs

17899 Sites disponibles

Carte Graph

Tracer ma zone

Plan Satellite

SITES	NOUVEAU	DISTANCE KM	IP	DÉCHETS DE CUISINES ET CONSOMMATION	HUILES ET GRAISSES	BIODÉCHETS SPÉCIFIQUES
1. Edouard Set - 2. Restaurant D'edouard - 3. S...		30		9t	1t	
1000 Market						
Residence De Letang Hébergement médicalisé Marclie Robert		27		17t	2t	
16 Jean Jau Restaurants et services de restaurati...		185		6t	0,86t	
180g Pizza Restaurants et services de restaurati...		71		5t	0,75t	
18b Restaurants et services de restaurati...		131		16t	2t	
2 Potes Au Feu Restaurants et services de restaurati...		68		6t	0,86t	
201 Forest Avenue Restaurants et services de restaurati...		127		12t	2t	
2lmc Restaurants et services de restaurati...		98		5t	0,69t	
2lpr (domino's Pizza) Restaurants et services de restaurati...		35		7t	1t	
2m Restaurants et services de restaurati...		72		10t	1t	
2n (burger King)						

Visualize the distribution of deposits in a territory

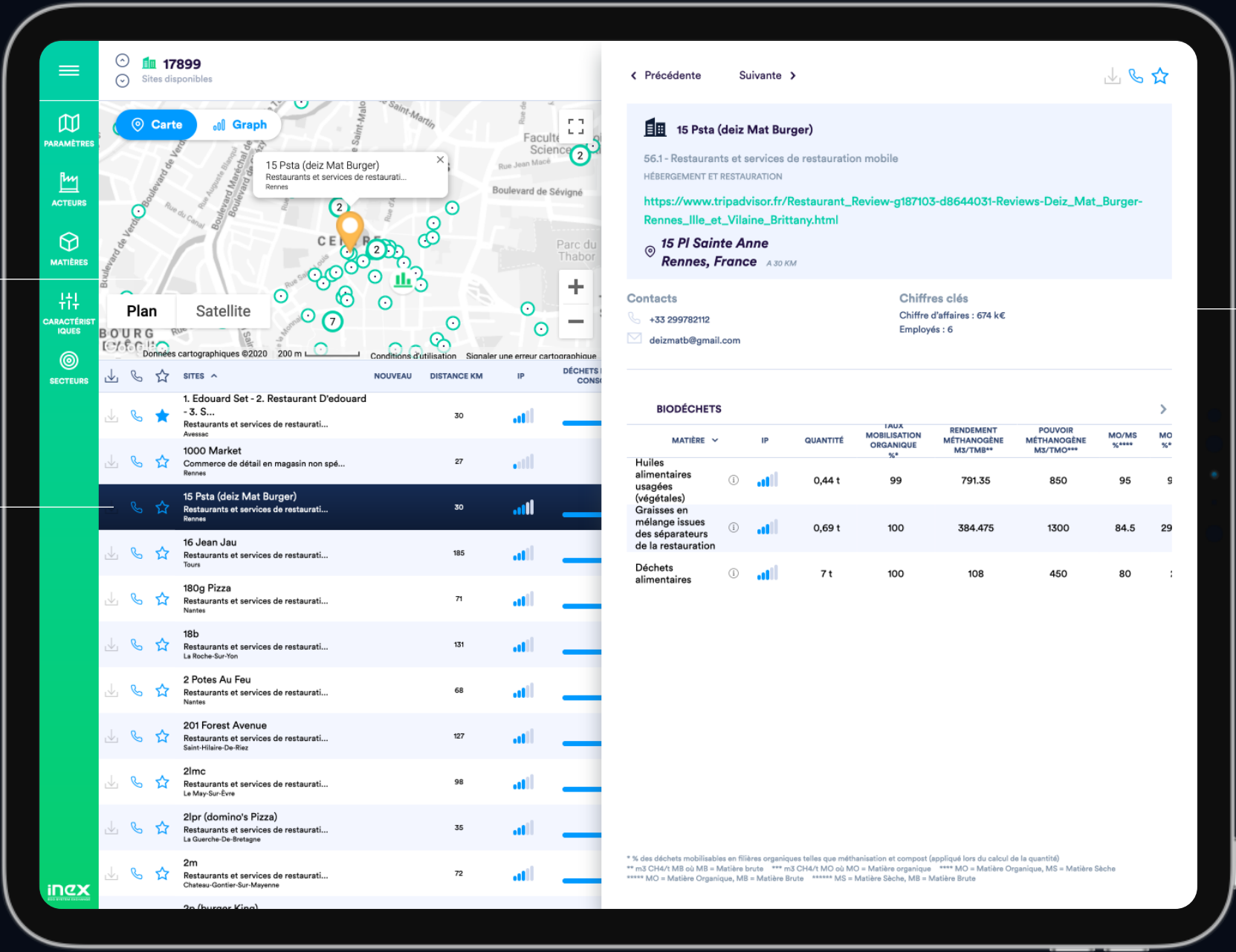
Detail by actors

Nature of the waste: Detailed typology and packaging
Quantities generated in Tons
Indicator of relevance of the predicted data

Geolocate relevant companies

List of companies in the defined area

Nature of the waste: Detailed typology
Characteristics : % organic mobilizable, seasonality, type of material
Quantities generated in Tons
Indicator of data relevance



Get the details for each company

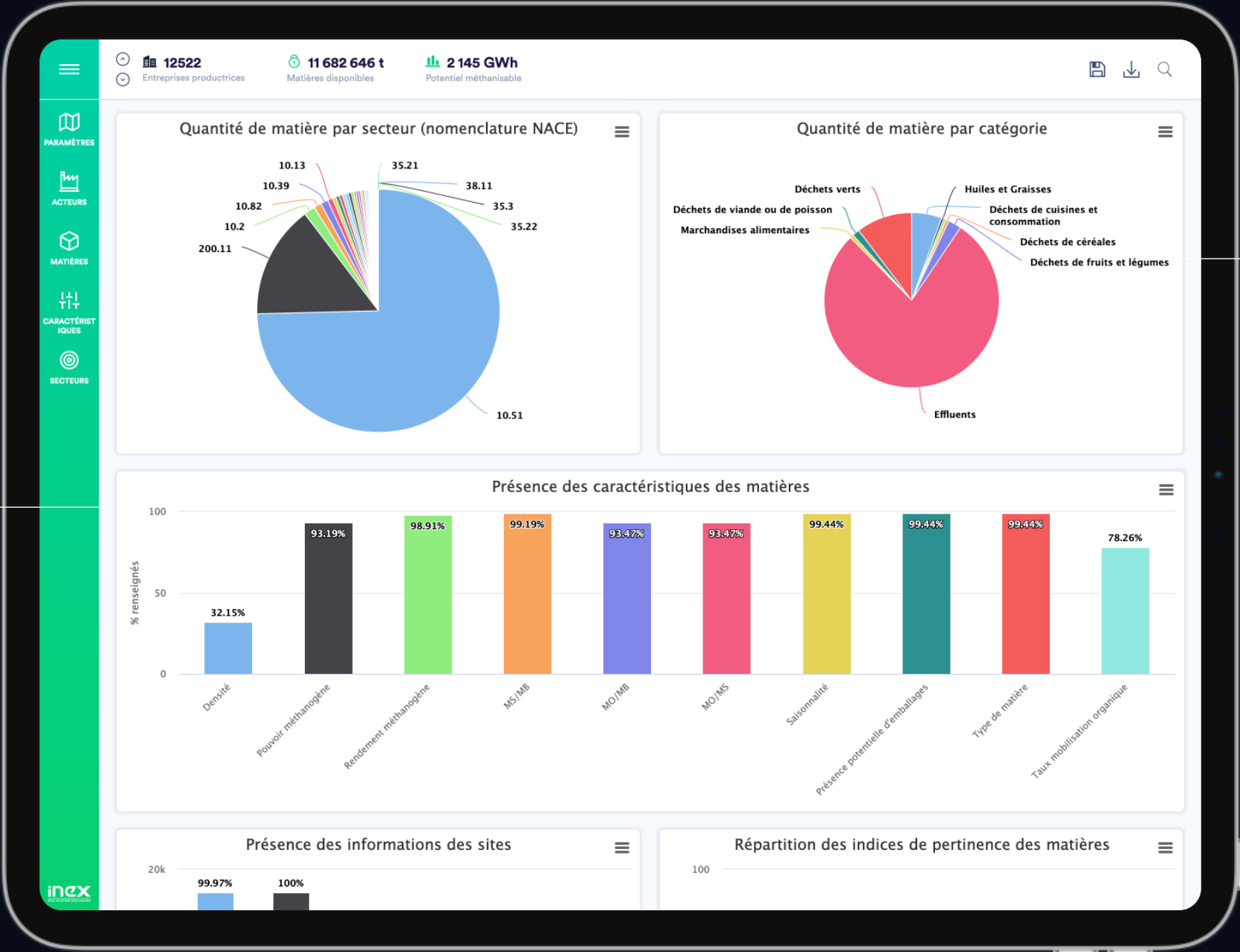
Details for each company

Company information: Customer name, company register, Address, Sector of activity (NACE), Number of employees, Turnover
Contacts : E-mail, Phone number

Get quantitative analysis on the selected area

List of companies in the defined area

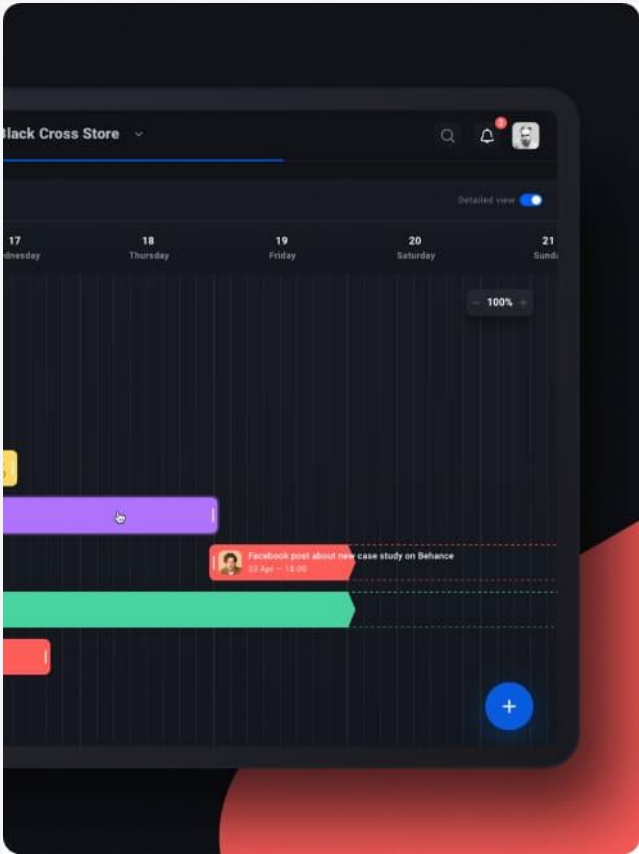
- Nature of the waste: Detailed typology
- Characteristics : % organic mobilizable, seasonality, type of material
- Quantities generated in Tons
- Indicator of data relevance



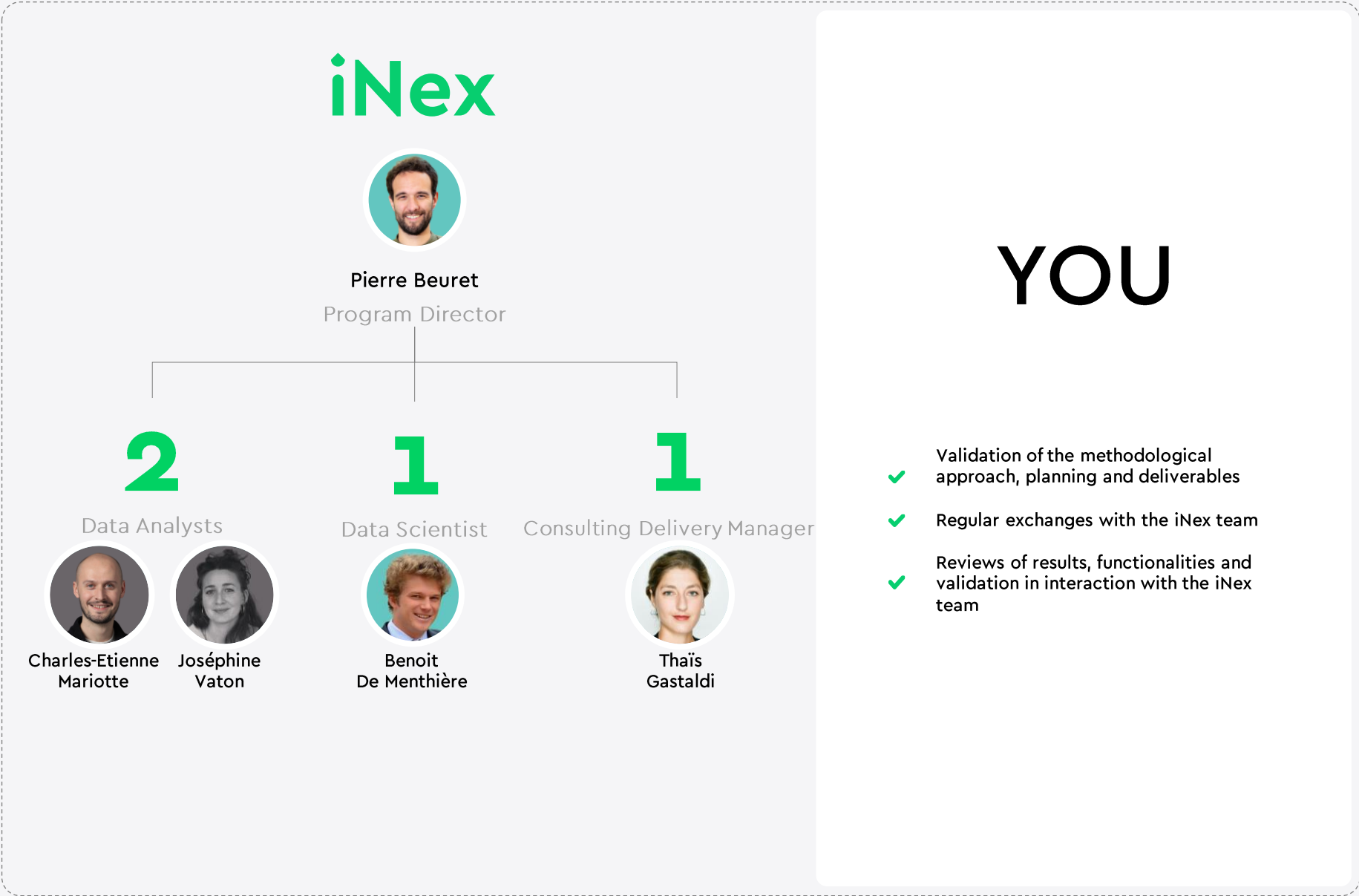
Quantitative analyses on the selected area

Company information: Customer name, register company, Address, Sector of activity (NACE), Number of employees, Turnover
Contacts : E-mail, Phone number

Work
with us



Team project
iNex
advance



Appendices



**Ai
iNex**

iNex Cloud

Dedicated and ultra secure environment

We offer our clients with strategic and confidential data a secure and encrypted dedicated server.

Particularly secure, this solution is used by **TotalEnergies, Engie, ...** to host its confidential data. We are tested via Qualys probes to ensure intrusion blocking.

We therefore have the experience to guarantee you a **encrypted environment** and accessible only for restricted IP addresses, while securing each of the connectivity layers as you can see on the following diagram.

We suggest you to discuss with our system administrator about our technical choices and reassure you about their robustness. A security test is also programmable, if you choose this solution.

The advantages of this solution :

- Synchronize **your strategic data in a secure environment** accessible only to your staff from your network
- **Make the data evolve according to your needs** and without sharing it with our other clients
- **Customize the tool** with options that are unique to you and not shared to maintain your competitive edge
- **Take advantage of the new options instantly** of iNex and data updates



A secure and dedicated environment



For any information request or a demo

Contact us

Olivier Gambari

06 07 19 44 63
gambari@inex.pro

Pierre Beuret

07 70 00 77 37
beuret@inex.pro



The logo for iNex, featuring the text "iNex" in a white, sans-serif font. The letter "i" is lowercase, while "Nex" is uppercase. The logo is set against a dark, rounded rectangular background that has a subtle gradient from dark purple to dark green. Below the text, there is a small horizontal line with a gradient from purple to green.

iNex

Artificial intelligence for
efficiency