

The KEB logo is displayed in white, bold, sans-serif capital letters within a red rectangular box. The background of the entire page is a blue-tinted industrial factory interior with overhead lighting and complex machinery.

KEB

#MakeYourAutomationWork



Plastics
Machinery



Blowers &
Turbo Compressors



e-mobility



Lifts &
Escalators



Medical
Technology



Material
Handling



Woodworking
Machinery



Wind
Energy



Pack &
Food

PRODUCT PORTFOLIO

EN



Next Open Automation

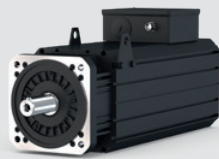
The digital platform for OEM machines & systems

PREVIEW

LINUX & CONTAINER BASED ARCHITECTURE

MACHINE LEARNING ■ MONITORING ■ COMMUNICATION
ANALYSIS ■ CUSTOMER APPS ■ CONTROL ■ HMI

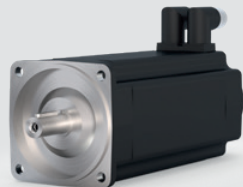
GEARS & MOTORS



DL4-LC

SERVO MOTORS WITH LIQUID COOLING

- High power density and efficiency
- Rated torques up to 520 Nm
- Use in applications with high loads
- In the system with Drive Controller COMBIVERT F6

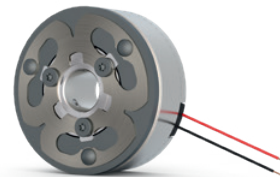


SERVO MOTORS TA4/TA5

NEW POWER DENSITY

- Powerful driving with high efficiency
- Compact dimensions
- High dynamic torques
- Precise positioning

BRAKES & CLUTCHES



COMBIPERM P2

POWERFUL PERMANENT MAGNET BRAKES

- Optimised for the servo motor
- Low heating and power consumption
- More braking torque
- Compact design



COMBISTOP S1

SPRING-APPLIED BRAKE WITH FAIL-SAFE FUNCTIONS

- Safety brake
- High torque, small installation space
- Execution of numerous emergency stops
- Innovative, patented friction system

NEW

PREVIEW

NEW



C6 COMPACT 3 NEW EMBEDDED CONTROL

- Small dimensions, big performance
- Control, HMI, OPC UA
- Real-time motion control
- Linux-based, open microservice architecture

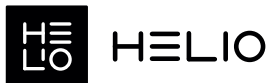


PREMIERE

C6 X1 WEB HMI SLIM DESIGN WITH HIGH FUNCTIONALITY

- 7" to 21.5" display
- Capacitive multi-touch screen
- Various mounting options
- Wi-Fi, NFC

NEW



HMI MANAGEMENT SYSTEM CREATE INTUITIVE HMIS QUICK AND SIMPLE

- No Code: HMI development without programming effort
- Future-proof and flexible thanks to true responsiveness
- HELIO takes care of the UX design
- Edit with real live data from the plant

HIGH-SPEED DRIVES UP TO 2,000 Hz

- Drive Controller with matched filter technology
- Power from 30 kW to 450 kW
- Switching frequencies up to 16 kHz
- For processing spindles, turbo compressors, etc.



PEAK POWER DRIVES HIGH OVERLOAD CAPACITY

- High switching frequencies for low-noise operation
- Overload capacity to absorb load jumps and current peaks
- Optional software package for lift applications



More information: www.helio-hmi.com

CONTROL & AUTOMATION

For flexible and economical automation solution the KEB portfolio provides extensive hardware solutions and software functionalities from the display to the motion profile.

SOFTWARE

ENGINEERING TOOL

COMBIVIS studio 6 combines the IEC 61131-3 programming, drive parameterization, diagnostic and design of the user interface in one working environment.

REMOTE CONTROL / CLOUD ACCESS

Simple and safe remote and maintenance access via COMBIVIS Remote and secure transfer of recorded data to assigned cloud accounts with COMBIVIS cloud.

VISUALISATION

Visualisation made easy – design high-quality HMIs quickly and easily with HELIO.



HARDWARE

Web HMI

With capacitive multi-touch screens ranging in size from 7" to 21.5" and various mounting types, the C6 X1 panels can be used in a variety of ways.

VPN Router

COMBICONTROL C6 Router enables secure access to machines and systems, the integrated HMI functionality allows long-term analyses, data logging and notifications via email or SMS.

PANEL-, BOX-, BOOK MOUNT-, DIN rail IPC and REMOTE I/O

COMBICONTROL C6 provides scalable, central and decentralized IPC solutions with EtherCAT communication in real time together with I/O terminal system. The safety-related part of the overall system is handled by Safety PLC, Safety I/O module together with S6 / F6 drive controllers - in short safety in the system.

SAFETY IN THE SYSTEM

with safe data transfer via Safety over EtherCAT (FSoE).



DRIVES

DRIVE SYSTEMS FOR MACHINE AND PLANT MANUFACTURING

COMBIVERT inverters and servo systems – Made by KEB – are universally applicable up to 45 kW / 230 V respectively 450 kW / 400 V for three-phase, synchronous, spindle, torque, linear and special motors. Drive electronics with outstanding shaft characteristics as the basis for precise speed, torque and position control, open-loop, closed-loop, with and without encoder we call:

DRIVE CONTROLLER

The KEB control methods ASCL (Asynchronous Sensorless Closed Loop) and SCL (Synchronous Sensorless Closed Loop) are benchmarks for the operation of motors in a unique range of applications. The integrated safety functions provide an excellent basis for high-quality machines and plants.



Supply-/Regen Units **up to 1,000 kVA**

Generate braking energy from processes and reduce operating costs.

EMC, mains and motor filters

Chokes, sine-wave or harmonic filters – passive components reduce influences or feedback in systems, protect motor windings, lower harmonics and ensure the functional safety of machines.



MOTORS & GEARS

MOTORS

Three-phase motors **up to 45 kW**

The robust, versatile electric drive, with brake, encoder, external ventilation, etc.

Servo motors **up to 500 Nm**

Highest dynamics with up to 5 times the nominal torque – permanent magnet servo motors, optionally with or without feedback (resolver, single or multi-turn absolute encoder) as well as holding or safety brake.



GEARS

Helical geared motors **up to 13,600 Nm**

High reliability, compact design, wide gear ratio – the first choice for the horizontal output in modern systems.

Shaft mounted helical geared motors **up to 8,900 Nm**

The robust and durable construction offers the combination of optimal performance and convenient mounting options.

Helical worm geared motors **up to 1,160 Nm**

Good efficiency thanks to the upstream helical gear stage, high torque and low speed in the smallest installation space with lateral output.

Helical bevel geared motors **up to 12,200 Nm**

Optimal efficiency factor, wide speed range – the perfect solution for designs with lateral output.



BRAKES AND CLUTCHES

50 years of experience in the development and production of electromagnetic solutions for safe holding, starting, stopping or positioning.

Electromagnetic brakes and clutches **up to 750 Nm**

COMBINORM are single-surface elements with asbestos-free friction linings for backlash-free torque transmission without residual torque at short switching times.

Spring-applied brakes **up to 3,000 Nm**

COMBISTOP – double-surface brakes with adjustment of air gap, asbestos-free friction linings warrant the highest level of safety and protection even under extreme stress.

Permanent magnet brakes **up to 145 Nm**

COMBIPERM stands for large braking torques with a small building volume, backlash-free holding, residual torque-free separation without, maximum air gaps, large release window.

Clutch-brake combination **up to 250 Nm**

Housing version for start / stop operation with wear adjustment.



E-MOBILITY

T6 APD – the **modular and scalable DRIVE CONTROLLER system** for mobile use, flexible in three sizes of 16.5 A, 33 A and 60 A for up to six independently driven electric motors, including control unit for regulating individual system properties and as communication gateway for vehicle control.

WIND POWER

CLEAN ENERGY FROM ON- AND OFFSHORE OPERATION in large-scale wind turbines.

KEB pitch systems and yaw / azimuth drive solutions regulate the amount of energy and reliably protect the systems from overload.



CONTACTS

Austria | KEB Automation GmbH

Phone: +43 7243 53586-0 E-Mail: info@keb.at

Benelux | KEB Automation KG

Phone: +32 2 447 8580 E-Mail: info.benelux@keb.de

Czech Republic | KEB Automation GmbH

Phone: +420 544 212 008 E-Mail: info@keb.cz

France | Société Française KEB SASU

Phone: +33 149620101 E-Mail: info@keb.fr

Germany | **Geared Motors**

KEB Antriebstechnik GmbH

Phone: +49 3772 67-0 E-Mail: info@keb-drive.de

Italy | KEB Italia S.r.l. Unipersonale

Phone: +39 02 3353531 E-Mail: info@keb.it

Japan | KEB Japan Ltd.

Phone: +81 33 445-8515 E-Mail: info@keb.jp

P. R. China | KEB Power Transmission Technology (Shanghai) Co. Ltd.

Phone: +86 21 37746688 E-Mail: info@keb.cn

Poland | KEB Automation KG

Phone: +48 604 077 727 E-Mail: roman.trinczek@keb.de

Republic of Korea | KEB Automation KG

Phone: +82 55 601 5505 E-Mail: jaeok.kim@keb.de

Spain | KEB Automation KG

Phone: +34 93 8970268 E-Mail: vb.espana@keb.de

Switzerland | KEB Automation AG

Phone: +41 43 2886060 E-Mail: info@keb.ch

United Kingdom | KEB (UK) Ltd.

Phone: +44 1933 402220 E-Mail: info@keb.co.uk

United States | KEB America, Inc.

Phone: +1 952 2241400 E-Mail: info@kebameric.com

Automation with Drive

keb-automation.com

KEB Automation KG Suedstrasse 38 32683 Barntrop Germany Tel. +49 5263 401-0 E-Mail: info@keb.de