



INTERPUMP

FLUID SOLUTIONS 

Powered by I.M.M. Hydraulics

Machines

2023

Machines

We have also available the following catalogues

Carbon Steel fittings

One-Piece fittings

Stainless Steel fittings

Hydraulic Hoses and Accessories

Premium Adaptors & Tube Connectors

Quick Couplings

MGOUIX

Crimping

in

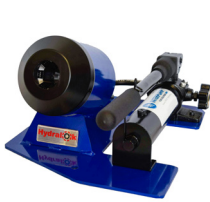
COMPAK1 - Portable swaging machine 63 Tons

COMPAK1M	<i>Standard version equipped with hand pump</i>
COMPAK1P	<i>Standard version equipped with air-hydraulic pump</i>
COMPAK1M-MODULAR	<i>Modular version equipped with disconnectable head and hand pump</i>
COMPAK1P-MODULAR	<i>Modular version equipped with disconnectable head and air-hydraulic pump</i>

Description

Swaging machine with hose capacity up to 1/2" (2 wire). Lightweight, compact and easy to use, it is characterized by an exclusive design and it is suitable to carry out repairs on site.

The machine is factory-fitted with a not-interchangeable master die set, thus making it the perfect choice for specific and routine usage.



COMPAK1M



COMPAK1M-MODULAR



COMPAK1P



COMPAK1P-MODULAR

Product features and specifications

CRIMPING RANGE* [mm/inch]	10/0.39			
MAX CRIMPING FORCE [kN/ton]	630/63			
HOSE CAPACITY [inch]	See die chart			
MAX OPENING ** [mm]	+34			
MAX WORK OPENING *** [mm]	+34			
CALIBRATION	dial micrometer			
OPERATION	twin speed hand pump with integrated relief valve/ air-hydraulic pump [690 bar/10.00 psi]			
	COMPAK1M	COMPAK1P	COMPAK1M-MODULAR	COMPAK1P-MODULAR
NET WEIGHT [kg]	23	25	20	22
GROSS WEIGHT [kg]	29	31	26	28
DIMENSIONS LxWxH [mm]	316x409x207		138x285x219	

* Any 10mm range between 5 mm and 35 mm available on request.

** The maximum opening of the machine is the result of the sum of this value and the nominal size number of used master sie set.

***The maximum working diameter is the result of the sum of this value and the nominal size number of used master die set.

Die Chart

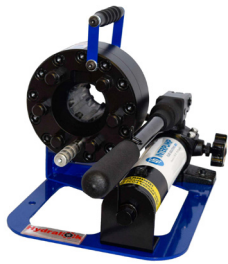
COMPAK1M	COMPAK1P	COMPAK1M-MODULAR	COMPAK1P-MODULAR	Die code**	Swaging range [mm/inch]	L [mm]
COMPAK1M 5-15	COMPAK1P 5-15	COMPAK1M-MODULAR 5-15	COMPAK1P-MODULAR 5-15	DA10131	5 – 15/0.19 – 0.59	37
COMPAK1M 6.5-16.5	COMPAK1P 6.5-16.5	COMPAK1M-MODULAR 6.5-16.5	COMPAK1P-MODULAR 6.5-16.5	DA10173	6.5 – 16.5/0.25 – 0.65	37
COMPAK1M 7-17	COMPAK1P 7-17	COMPAK1M-MODULAR 7-17	COMPAK1P-MODULAR 7-17	SD10027	7 – 17/0.27 – 0.66	37
COMPAK1M 9-19	COMPAK1P 9-19	COMPAK1M-MODULAR 9-19	COMPAK1P-MODULAR 9-19	DA10257	9 – 19/0.35 – 0.74	37
COMPAK1M 11.3-21.3	COMPAK1P 11.3-21.3	COMPAK1M-MODULAR 11.3-21.3	COMPAK1P-MODULAR 11.3-21.3	DA10207	11.3 – 21.3/0.44 – 0.83	37
COMPAK1M 12-22	COMPAK1P 12-22	COMPAK1M-MODULAR 12-22	COMPAK1P-MODULAR 12-22	SD10026	12 – 22/0.47 – 0.86	37
COMPAK1M 13.5-24	COMPAK1P 13.5-24	COMPAK1M-MODULAR 13.5-24	COMPAK1P-MODULAR 13.5-24	SD10039	13.5 – 24/0.53 – 0.94	37
COMPAK1M 15-25	COMPAK1P 15-25	COMPAK1M-MODULAR 15-25	COMPAK1P-MODULAR 15-25	DA10263	15 – 25/0.59 – 0.98	37
COMPAK1M 16-26	COMPAK1P 16-26	COMPAK1M-MODULAR 16-26	COMPAK1P-MODULAR 16-26	DA10175	16 – 26/0.63 – 1.02	37
COMPAK1M 17-27	COMPAK1P 17-27	COMPAK1M-MODULAR 17-27	COMPAK1P-MODULAR 17-27	HM30005	17 – 27/0.66 – 1.06	37
COMPAK1M 20-30	COMPAK1P 20-30	COMPAK1M-MODULAR 20-30	COMPAK1P-MODULAR 20-30	DA10158	20 – 30/0.78 – 1.18	37
COMPAK1M 25-35	COMPAK1P 25-35	COMPAK1M-MODULAR 25-35	COMPAK1P-MODULAR 25-35	DA10153	25 – 35/0.98 – 1.37	37

H19MM - Portable swaging machine 90 tons

H19MM-M-1	Standard version equipped with manual pump
H19MM-P-1	Standard version equipped with air-hydraulic pump
H19MM-MODULAR-M-1	Modular version equipped with disconnectable head and hand pump
H19MM-MODULAR-P-1	Modular version equipped with disconnectable head and air-hydraulic pump

Description

Swaging machine with hose capacity up to 3/4" (2 wire). Lightweight, compact and easy to use, and it is ideal to carry out repairs on site.



H19MM-M-1



H19MM-P-1



H19MM-MODULAR-M-1



H19MM-MODULAR-P-1

Product features and specifications

CRIMPING RANGE* [mm/inch]	6-34/0.24-1.34			
MAX CRIMPING FORCE [kN/ton]	900/90			
HOSE CAPACITY [inch]	3/16"-3/4" R1AT/1SN/R2AT/2SN (2 wire) – Straight fittings 3/16"-1/2" R1AT/1SN/R2AT/2SN (2 wire) – 90° fittings			
MAX OPENING ** [mm]	+13			
MAX WORK OPENING *** [mm]	+12			
CALIBRATION	Dial micrometer			
OPERATION	Twin speed hand pump with integrated relief valve/ air- hydraulic pump [690 bar/10.000 psi]			
	H19MM-M-1	H19MM-P-1	H19MM-MODULAR-M-1	H19MM-MODULAR-P-1
NET WEIGHT	20	22	18	20
GROSS WEIGHT [kg]	26	28	24	26
DIMENSIONS LxWxH [mm]	265x523x210		165x280x210	

* With standard die sets. For specific applications, special die sets are available on request.

** The maximum opening of the machine is the result of the sum of this value and the nominal size number of used master die set.

*** The maximum working diameter is the result of the sum of this value and the nominal size number of used master die set.

Die sets- S series

Part Number	Standard	Crimping range [mm]	L [mm]	Ferrule Ømax [mm]
S06		6.0 - 7.9	40	18
S08		8.0 - 9.9	40	20
S10		10.0 - 12.9	40	22
S13		13.0 - 15.9	40	25
S14		14.0 - 15.9	40	26
S16	X	16.0 - 18.9	40	28
S19	X	19.0 - 21.9	40	31
S22	X	22.0 - 25.9	50	34
S26	X	26.0 - 27.9	50	38
S28	X	28.0 - 33.9	50	40

SPECIAL DIE SETS FOR AIR CONDITIONING APPLICATIONS

Part Number	Ø Standard size [mm]	Ø Reduced size [mm]
DA10193R6	-	6
DA10193N6R8	6	8
DA10193N8R10	8	10
DA10193N10R12	10	12
DA10193N12R14	12	14

SPECIAL DIE SET FOR BRAKE HOSE APPLICATIONS

Part Number	Ø [mm]	L [mm]
DA103125B02	10.5	40

OPTIONAL

QC-01



H25MINI - Portable swaging machine 100 tons

H25MINI-M-1

Standard version equipped with manual pump and drawer

H25MINI-P-1

Standard version equipped with air-hydraulic pump and drawer

H25MINI-MODULAR-M-1

Modular version equipped with disconnectable head and hand pump

H25MINI-MODULAR-P-1

Modular version equipped with disconnectable head and air-hydraulic pump

Description

Swaging machine with hose capacity up to 1" (4 wire) ****. The standard version is equipped with a sliding drawer to store dies. Lightweight, compact and easy to use, and it is ideal to carry out repairs on site. Available in four different configurations.



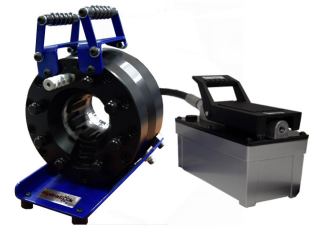
H25MINI-M-1



H25MINI-P-1



H25MINI-MODULAR-M-1



H25MINI-MODULAR-P-1

Product features and specifications

CRIMPING RANGE * [mm/inch]	6-46/0.24-1.81			
MAX CRIMPING FORCE [kN/ton]	1000/100			
HOSE CAPACITY [inch]	3/16"-1" R1AT/1SN/R2AT/2SN (2 wire) – Straight fittings 3/16"-1" R9R/4SP (4 wire) **** – Straight fittings 3/16"-1" 90° fittings, double curve fittings (removing a die set segment)			
MAX OPENING** [mm]	+24			
MAX WORK OPENING *** [mm]	+12			
CALIBRATION	Dial micrometer			
OPERATION	Twin speed hand pump with integrated relief valve/ air- hydraulic pump [690 bar/10.000 psi]			
	H25MINI-M-1	H25MINI-P-1	H25MINI-MODULAR-M-1	H25MINI-MODULAR-P-1
NET WEIGHT [kg]	38	40	36	40
GROSS WEIGHT [kg]	48	50	46	50
DIMENSIONS LxWxH [mm]	364x524x312		287x231x 274	

* With standard die sets. For specific applications, special die sets are available on request.

**The maximum opening of the machine is the result of the sum of this value and the nominal size number of used die set.

*** The maximum working diameter is the result of the sum of this value and the nominal size number of used die set.

**** Flexible hoses 1" (4 wire) can only be crimp with a special die sets A40-65

Die sets – A series

Part Number	Standard	Crimping range [mm]	L [mm]	Ferrule Max Ø [mm]
A06		6.0 - 7.9	40	18
A08		8.0 - 9.9	40	20
A10		10.0 - 12.9	40	22
A13		13.0 - 15.9	40	25
A14		14.0 - 15.9	40	26
A16	X	16.0 - 21.9	40	28

Part Number	Standard	Crimping range [mm]	L [mm]	Ferrule Max Ø [mm]
A19		19.0 - 21.9	40	31
A22	X	22.0 - 25.9	50	34
A28	X	28.0 - 33.9	50	40
A34	X	34.0 - 39.9	60	46
A40	X	40.0 - 45.9	60	52
A40-65		40.0 - 45.9	65	52

OPTIONAL

QC-01



H25MM - Manually operated swaging machine 140 tons

H25MM-M-1 Standard version equipped with manual pump

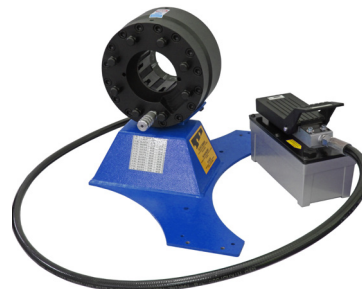
H25MM-P-1 Standard version equipped with air-hydraulic pump

Description

Swaging machine with hose capacity up to 1 1/4" (2 wire)*. Ideal for applications where a greater crimping force is required, it is suitable for use on vans and in small workshops. Available in two different configurations.



H25MM-M-1



H25MM-P-1

Product features and specifications

CRIMPING RANGE* [mm/inch]	6-58/0.24-2.28	
MAX CRIMPING FORCE [kN/ton]	1400/140	
HOSE CAPACITY [inch]	3/16"-1 1/4" R1AT/1SN/R2AT/2SN (2 wire) 3/16"-1" R9R/4SP (4 wire)	
MAX OPENING** [mm]	+31	
MAX WORK OPENING *** [mm]	+12	
CALIBRATION	Dial micrometer	
OPERATION	Twin speed hand pump with integrated relief valve/ air- hydraulic pump [690 bar/10.000psi]	
	H25MM-M-1	H25MM-P-1
NET WEIGHT [kg]	60	62
GROSS WEIGHT [kg]	70	72
DIMENSIONS LxWxH [mm]	394x788x360	

* With standard die sets. For specific applications, special die sets are available on request.

** The maximum opening of the machine is the result of the sum of this value and the nominal size number of used master die set.

*** The maximum working diameter is the result of the sum of this value and the nominal size number of used master die set.

Die sets – H series

Part Number	Standard	Crimping range [mm]	L [mm]	Ferrule Max Ø [mm]
H06		6.0 - 7.9	40	18
H08		8.0 - 9.9	40	20
H10		10.0 - 12.9	40	22
H13		13.0 - 15.9	40	25
H14		14.0 - 15.9	40	26
H16	X	16.0 - 21.9	40	28
H19		19.0 - 21.9	40	31
H22	X	22.0 - 27.9	50	34

Part Number	Standard	Crimping range [mm]	L [mm]	Ferrule Max Ø [mm]
H26		26.0 - 29.9	50	38
H28	X	28.0 - 33.9	60	40
H30 ****		30.0 - 33.9	60	42
H30-70		30.0 - 33.9	70	42
H34	X	34.0 - 39.9	70	46
H40	X	40.0 - 45.9	70	52
H46		46.0 - 51.9	75	58
H52		52.0 - 57.9	75	64

**** Phase-out.

OPTIONAL

QC-02



H32MM - Manually operated swaging machine 175 tons

H32MM-M-1 Standard version equipped with manual pump

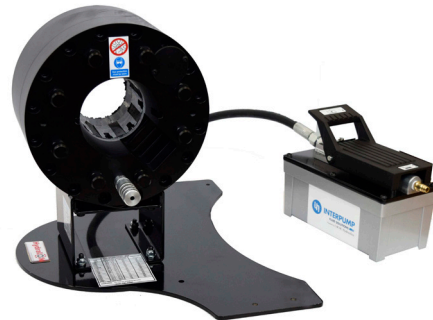
H32MM-P-1 Standard version equipped with air-hydraulic pump

Description

Swaging machine with hose capacity up to 1 1/4" (4 wire). Ideal for applications where a greater crimping force is required. H32MM is the model within manually operated swaging machine range with greater capacity. Available in two different configurations.



H32MM-M-1



H32MM-P-1

Product features and specifications

CRIMPING RANGE* [mm/inch]	6-58/0.24-2.28	
MAX CRIMPING FORCE [kN/ton]	1750/175	
HOSE CAPACITY [inch]	3/16"-1 1/2" R1AT/1SN/R2AT/2SN (2 wire) 3/16"-1 1/4" R9R/4SP (4 wire)	
MAX OPENING** [mm]	+31	
MAX WORK OPENING*** [mm]	+12	
CALIBRATION	Dial micrometer	
OPERATION	Twin speed hand pump with integrated relief valve/ air- hydraulic pump [690 bar/10.000 psi]	
	H32MM-M-1	H32MM-P-1
NET WEIGHT [kg]	75	77
GROSS WEIGHT [kg]	85	87
DIMENSIONS LxWxH [mm]	413x809x383	

* With standard die sets. For specific applications, special die sets are available on request.

** The maximum opening of the machine is the result of the sum of this value and the nominal size number of used master die set.

*** The maximum working diameter is the result of the sum of this value and the nominal size number of used master die set.

Die sets – H series

Part Number	Standard	Crimping range [mm]	L [mm]	Ferrule Max Ø [mm]
H06		6.0 - 7.9	40	18
H08		8.0 - 9.9	40	20
H10		10.0 - 12.9	40	22
H13		13.0 - 15.9	40	25
H14		14.0 - 15.9	40	26
H16	x	16.0 - 21.9	40	28
H19		19.0 - 21.9	40	31
H22	x	22.0 - 25.9	50	34

Part Number	Standard	Crimping range [mm]	L [mm]	Ferrule Max Ø [mm]
H26		26.0 - 29.9	50	38
H28	.	28.0 - 33.9	60	40
H30 ****		30.0 - 33.9	60	42
H30-70		30.0 - 33.9	70	42
H34	.	34.0 - 39.9	70	46
H40	.	40.0 - 45.9	70	52
H46	.	46.0 - 51.9	75	58
H52	.	52.0 - 57.9	75	64

****Phase-out

OPTIONAL

QC-02



H32ECOSLIM - Electrically operated swaging machine 175 tons

H32ECOSLIM-QC-1 380V 3PH 50 Hz version

H32ECOSLIM-QC-1PH-1 220V 1PH 50 Hz version

Description

Swaging machine with hose capacity up to 1 1/4" (4 wire). The machine is already equipped with a rack with ten die pots, a basic control panels and an integrated electric quick-change tool. Available in two different configurations.



H32ECOSLIM-QC-1

Product features and specifications

CRIMPING RANGE* [mm/inch]	6-58/0.24-2.28
MAX CRIMPING FORCE [kN/ton]	1750/175
HOSE CAPACITY [inch]	3/16"-1 1/2" R1AT/1SN/R2AT/2SN (2 wire) 3/16"-1 1/4" R9R/4SP (4 wire)
MAX OPENING** [mm]	+31
MAX WORK OPENING *** [mm]	+12
CALIBRATION	Dial calibrator
MOTOR [kW]	2.2
NET WEIGHT [kg]	124
GROSS WEIGHT [kg]	134
DIMENSIONS LxWxH [mm]	700x364x520

* With standard die sets. For specific applications, special die sets are available on request.

** The maximum opening of the machine is the result of the sum of this value and the nominal size number of used master die set.

*** The maximum working diameter is the result of the sum of this value and the nominal size number of used master die set.

Die sets – H series

Part Number	Standard	Crimping range [mm]	L [mm]	Ferrule Max Ø (mm)
H06		6.0 - 7.9	40	18
H08		8.0 - 9.9	40	20
H10		10.0 - 12.9	40	22
H13		13.0 - 15.9	40	25
H14		14.0 - 15.9	40	26
H16	x	16.0 - 21.9	40	28
H19		19.0 - 21.9	40	31
H22	x	22.0 - 27.9	50	34
H26		26.0 - 29.9	50	38
H28	x	28.0 - 33.9	60	40
H30 ****		30.0 - 33.9	60	42
H30-70		30.0 - 33.9	70	42
H34	x	34.0 - 39.9	70	46
H40	x	40.0 - 45.9	70	52
H46		46.0 - 51.9	75	58
H52		52.0 - 57.9	75	64

OPTIONAL

QC-02



H32 - Electrically operated head swaging machine 175 tons

H32MOBILE-12VDC-1/H32MOBILE-24VDC-1
Mobile version 12VDC/24VDC
H32ECO-1/H32ECO-1PH-1
Eco std version 380V 3PH 50Hz/220V 1PH 50Hz
H32ECO-C-1/H32ECO-C-1PH-1
Eco-C version 380V 3PH 50Hz/220V 1PH 50Hz
H32ECOPL-1/H32ECOPL-1PH-1
Eco Premium Line version 380V 3PH 50Hz/220V 1PH 50Hz
H32HYDRA-1/H32HYDRA-1PH-1
Hydratouch std version 380V 3PH 50Hz/220V 1PH 50Hz
H32HYDRAPL-1/H32HYDRAPL-1PH-1
Hydratouch Premium Line version 380V 3PH 50Hz/220V 1PH 50Hz


H32MOBILE-12VDC-1
H32MOBILE-24VDC-1



H32ECO-1
H32ECO-1PH-1



H32HYDRAPL-1
H32HYDRAPL-1PH-1

Description

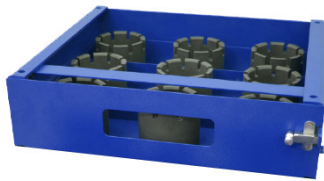
Swaging machine with hose capacity up to 11/4" (4 wire). Available in six different standard configurations as shown above.

Product features and specifications

CRIMPING RANGE* [mm/inch]	6-58/0.24-2.28					
MAX CRIMPING FORCE [kN/ton]	1750/175					
CAPACITY [inch]	3/16"-1 1/2" R1AT/1SN/R2AT/2SN (2 wire) 3/16"-1 1/4" R9R/4SP (4 wire)					
MAX OPENING** [mm]	+31					
MAX WORK OPENING*** [mm]	+12					
	H32MOBILE-12VDC-1 H32MOBILE-24VDC-1	H32ECO-1 H32ECO-1PH-1	H32ECO-C-1 H32ECO-C-1PH-1	H32ECOPL-1 H32ECOPL-1PH-1	H32HYDRA-1 H32HYDRA-1PH-1	H32HYDRAPL-1 H32HYDRAPL-1PH-1
CALIBRATION	Dial calibrator				Touchscreen	
MOTOR [kW]	1.8	2.2				
NET WEIGHT [kg]	91	124				
GROSS WEIGHT [kg]	101	134				
DIMENSIONS LxWxH [mm]	530x470x475	750x453x630				
RACK WITHOUT QUICK CHANGE SYSTEM	/	H32RACK 1 rack 8 die pots				
DRAWER/RACK WITH QUICK CHANGE SYSTEM	H32QCD001	H32QC		H32QC-PL	H32QC	H32QC-PL
QUICK CHANGE TOOL	QCT32-12	QCT32-24				
FOOT PEDAL	/	/	Integrated	Integrated	Optional	Integrated
VIDEO CAMERA	/	/	/	/	123-130	123-130

* With standard die sets. For specific applications, special die sets are available on request.
 ** The maximum opening of the machine is the result of the sum of this value and the nominal size number of used master die set
 *** The maximum working diameter is the result of the sum of this value and the nominal size number of used master die set.

OPTIONAL

Drawer

Rack

Foot pedal

Quick change tool

Camera

Mirror

QC-02


Die sets – H series

Part Number	Standard	Crimping range [mm]	L [mm]	Ferrule Max Ø (mm)
H06		6.0 - 7.9	40	18
H08		8.0 - 9.9	40	20
H10		10.0 - 12.9	40	22
H13		13.0 - 15.9	40	25
H14		14.0 - 15.9	40	26
H16	x	16.0 - 21.9	40	28
H19	x	19.0 - 21.9	40	31
H22	x	22.0 - 25.9	50	34
H26	x	26.0 - 29.9	50	38
H28		28.0 - 33.9	60	40
H30 ****		30.0 - 33.9	60	42
H30-70	X	30.0 - 33.9	70	42
H34	x	34.0 - 39.9	70	46
H40	x	40.0 - 45.9	70	52
H46	x	46.0 - 51.9	75	58
H52		52.0 - 57.9	75	64

**** Phase-out

H50 - Electrically operated swaging machine 250 tons

H50MOBILE-12VDC-1/H50MOBILE-24VDC-1

Mobile version 12VDC/24VDC

H50ECO-1/H50ECO-1PH-1

Eco std version 380V 3PH 50Hz/220V 1PH 50Hz

H50ECO-C-1/H50ECO-C-1PH-1

Eco-C version 380V 3PH 50Hz/220V 1PH 50Hz

H50ECOPL-1/H50ECOPL-1PH-1

Eco Premium Line version 380V 3PH 50Hz/220V 1PH 50Hz

H50HYDRA-1/H50HYDRA-1PH-1

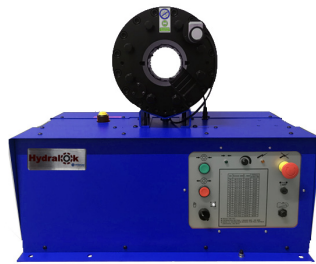
Hydratouch std version 380V 3PH 50Hz/220V 1PH 50Hz

H50HYDRAPL-1/H50HYDRAPL-1PH-1

Hydratouch Premium Line version 380V 3PH 50Hz/220V 1PH 50Hz



H50MOBILE-12VDC-1
H50MOBILE-24VDC-1



H50ECO-1
H50ECO-1PH-1



H50ECOPL-1
H50ECOPL-1PH-1

Description

Swaging machine with hose capacity up to 2" (4 wire). Available in six different standard configurations as shown above.

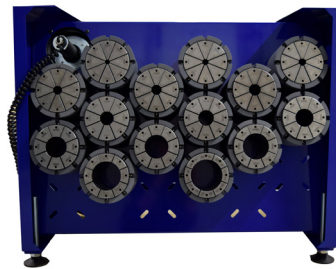
Product features and specifications

CRIMPING RANGE* [mm/inch]	6-76/0.24-2.99					
MAX CRIMPING FORCE [kN/ton]	2509/250					
CAPACITY [inch]	3/16"-2" R9R/4SP (4 wire)					
MAX OPENING** [mm]	+35					
MAX WORK OPENING*** [mm]	+12					
	H50MOBILE-12VDC-1 H50MOBILE-24VDC-1	H50ECO-1 H50ECO-1PH-1	H50ECO-C-1 H50ECO-C-PH-1	H50ECOPL-1 H50ECOPL-1PH-1	H50HYDRA-1 H50HYDRA-1PH-1	H50HYDRAPL-1 H50HYDRAPL-1PH-1
CALIBRATION	Dial calibrator				Touchscreen	
MOTOR [kW]	1.8					2.2
NET WEIGHT [kg]	111					159
GROSS WEIGHT [kg]	121					169
DIMENSIONS LxWxH [mm]	530x470x525			750x453x680		
RACK WITHOUT QUICK CHANGE SYSTEM	/			H50RACK 1 rack 12 die pots		
DRAWER/RACK WITH QUICK CHANGE SYSTEM	H50QCD001	H50QC		H50QC-PL	H50QC	H50QC-PL
QUICK CHANGE TOOL	QCT50-12		QTC50-24			
FOOT PEDAL	/	/	Integrated	Integrated	123-026	Integrated
VIDEO CAMERA	/	/	/	/	123-130	123-130

* With standard die sets. For specific applications, special die sets are available on request.
 ** The maximum opening of the machine is the result of the sum of this value and the nominal size number of used die set.
 *** The maximum working diameter is the result of the sum of this value and the nominal size number of used die set.

OPTIONAL

Drawer

Rack

Foot pedal

Quick change tool

Camera

Mirror

QC-02


Die sets – L series

Part Number	Standard	Crimping range [mm]	L [mm]	Ferrule Max Ø (mm)
L06		6.0 - 7.9	40	18
L08		8.0 - 9.9	40	20
L10		10.0 - 12.9	40	22
L13		13.0 - 15.9	40	25
L14		14.0 - 15.9	40	26
L16	x	16.0 - 18.9	40	28
L19	x	19.0 - 21.9	40	31
L22	x	22.0 - 25.9	50	34
L26	x	26.0 - 29.9	50	38
L30	x	30.0 - 33.9	60	42
L34	x	34.0 - 39.9	70	46
L40	x	40.0 - 45.9	70	52
L46	x	46.0 - 51.9	80	58
L52	x	52.0 - 57.9	80	64
L58	x	58.0 - 63.9	80	70
L64	x	64.0 - 69.9	80	76
L70	x	70.0 - 76.0	95	82

H50-46 - Electrically operated swaging machine 319 tons

H50-46MOBILE-12VDC-1/H50-46MOBILE-24VDC-1	Mobile version 12VDC/24VDC
H50-46ECO-1/H50-46ECO-1PH-1	Eco std version 380V 3PH 50Hz/220V 1PH 50Hz
H50-46ECO-C-1/H50-46ECO-C-1PH-1	Eco-C version 380V 3PH 50Hz/220V 1PH 50Hz
H50-46ECOPL-1/H50-46ECOPL-1PH-1	Eco Premium Line version 380V 3PH 50Hz/220V 1PH 50Hz
H50-46HYDRA-1/H50-46HYDRA-1PH-1	Hydratouch std version 380V 3PH 50Hz/220V 1PH 50Hz
H50-46HYDRAPL-1/H50-46HYDRAPL-1PH-1	Hydratouch Premium Line version 380V 3PH 50Hz/220V 1PH 50Hz



H50-46MOBILE-12VDC-1
H50-46MOBILE-24VDC-1



H50-46ECO-1
H50-46ECO-1PH-1



H50-46HYDRAPL-1
H50-46HYDRAPL-1PH-1

Description

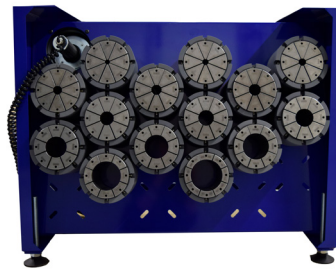
Swaging machine with hose capacity up to 1 1/2" (6 wire). Available in six different standard configurations as shown above.

Product features and specifications

CRIMPING RANGE* [mm/inch]	6-76/0.24-2.99					
MAX CRIMPING FORCE [kN/ton]	3195/319					
CAPACITY [inch]	3/16"-2" R9R/4SP (4 wire) 3/16"-1 1/2" R13/4SH (6 wire)					
MAX OPENING** [mm]	+25					
MAX WORK OPENING*** [mm]	+12					
	H50-46MOBILE-12VDC-1 H50-46MOBILE-24VDC-1	H50-46ECO-1 H50-46ECO-1PH-1	H50E-46ECO-C-1 H50E-46ECO-C-1PH-1	H50-46ECOPL-1 H50-46ECOPL-1PH-1	H50-46HYDRA-1 H50-46HYDRA-1PH-1	H50-46HYDRAPL-1 H50-46HYDRAPL-1PH-1
CALIBRATION	Dial calibrator				Touchscreen	
MOTOR [kW]	1.8					2.2
NET WEIGHT [kg]	146					194
GROSS WEIGHT [kg]	156					204
DIMENSIONS LxWxH [mm]	530x470x560					750x453x716
DRAWER/RACK WITHOUT QUICK CHANGE SYSTEM	/					H50-46RACK 1 rack 18 die pots
DRAWER/RACK WITH QUICK CHANGE SYSTEM	H50-46QCD001	H50-46QC		H50-46QC-PL	H50-46QC	H50-46QC-PL
QUICK CHANGE TOOL	QCT46-12					QTC50-46QC
FOOT PEDAL	/	/	Integrated	Integrated	123-026	Integrated
VIDEO CAMERA	/	/	/	/	123-130	123-130

* With standard die sets. For specific applications, special die sets are available on request.
 ** The maximum opening of the machine is the result of the sum of this value and the nominal size number of used master die set.
 *** The maximum working diameter is the result of the sum of this value and the nominal size number of used master die set.

OPTIONAL
Drawer

Rack

Foot pedal

Quick change tool

Camera

Mirror

QC-02

Die sets – M series

Part Number	Standard	Crimping range [mm]	L [mm]	Ferrule Max Ø [mm]
M06		6.0 - 7.9	40	18
M08		8.0 - 9.9	40	20
M10		10.0 - 12.9	40	22
M13		13.0 - 15.9	40	25
M14-50		14.0 - 15.9	50	26
M16	x	16.0 - 18.9	40	28
M19	x	19.0 - 21.9	40	31
M22	x	22.0 - 25.9	50	34
M26	x	26.0 - 29.9	50	38
M30****		30.0 - 33.9	60	42
M30-70	x	30.0 - 33.9	70	42
M34	x	34.0 - 39.9	70	46
M40	x	40.0 - 45.9	85	52
M46****		46.0 - 51.9	90	58
M46-100	x	46.0 - 51.9	100	58
M52	x	52.0 - 57.9	100	64
M58	x	58.0 - 63.9	105	70
M64	x	64.0 - 69.9	110	76
M70	x	70.0 - 75.9	110	82

**** Phase out

H50-6 - Electrically operated swaging machine 450 tons

H50-6ECO-1/H50-6ECO-1PH-1

H50-6ECO-C-1/H50-6ECO-C-1PH-1

H50-6ECOPL-1/H50-6ECOPL-1PH-1

H50-6HYDRA-1/H50-6HYDRA-1PH-1

H50-6HYDRAPL-1/H50-6HYDRAPL-1PH-1

Eco version 380V 3PH 50Hz/220V 1PH 50Hz

Eco-C version 380V 3PH 50Hz/220V 1PH 50Hz

Eco Premium Line version 380V 3PH 50Hz/220V 1PH 50Hz

Hydratouch version 380V 3PH 50Hz/220V 1PH 50Hz

Hydratouch Premium Line version 380V 3PH 50Hz/220V 1PH 50Hz



H50-6ECO-1
H50-6ECO-1PH-1



H50-6ECOPL-1
H50-6ECOPL-1PH-1



H50-6HYDRAPL-1
H50-6HYDRAPL-1PH-1

Description

Swaging machine with hose capacity up to 2" (6 wire). Available in five different standard configurations as shown above.

Product features and specifications

CRIMPING RANGE* [mm/inch]	6-82/0.24-3.23				
MAX CRIMPING FORCE [kN/ton]	4500/450				
CAPACITY [inch]	3/16"-2" R13/4SH (6 wire)				
MAX OPENING** [mm]	+47				
MAX WORK OPENING*** [mm]	+12				
	H50-6ECO-1 H50-6ECO-1PH-1	H50E-6CO-C-1 H50E-6CO-C-PH-1	H50-6ECOPL-1 H50-6ECOPL-1PH-1	H50-6HYDRA-1 H50-6HYDRA-1PH-1	H50-6HYDRAPL-1 H50-6HYDRAPL-1PH-1
CALIBRATION	Dial calibrator			Touchscreen	
MOTOR [kW]	2.2				
NET WEIGHT [kg]	245				
GROSS WEIGHT [kg]	255				
DIMENSIONS LxWxH [mm]	750x453x795				
RACK WITHOUT QUICK CHANGE SYSTEM	H50-6RACK 1 Rack 18 die pots				
RACK WITH QUICK CHANGE SYSTEM	H50-6QC	H50-6QC	H50-6QC-PL	H50-6QC	H50-6QC-PL
QUICK CHANGE TOOL	QTC46-24				
FOOT PEDAL	/	Integrated	Integrated	123-026	Integrated
VIDEO CAMERA	/	/	/	123-130	123-130

* With standard die sets. For specific applications, special die sets are available on request.
 ** The maximum opening of the machine is the result of the sum of this value and the nominal size number of used master die set.
 *** The maximum working diameter is the result of the sum of this value and the nominal size number of used master die set.

OPTIONAL
Dispenser

Foot pedal

Quick change tool

Camera

Mirror

QC-02

Die sets – M series

Part Number	Standard	Crimping range [mm]	L [mm]	Ferrule Max Ø [mm]
M06		6.0 - 7.9	40	18
M08		8.0 - 9.9	40	20
M10		10.0 - 12.9	40	22
M13		13.0 - 15.9	40	25
M14-50		14.0 - 15.9	50	26
M16	x	16.0 - 18.9	40	28
M19	x	19.0 - 21.9	40	31
M22	x	22.0 - 25.9	50	34
M26	x	26.0 - 29.9	50	38
M30****		30.0 - 33.9	60	42
M30-70	x	30.0 - 33.9	70	42
M34	x	34.0 - 39.9	70	46
M40	x	40.0 - 45.9	85	52
M46		46.0 - 51.9	90	58
M46-100****	x	46.0 - 51.9	100	58
M52	x	52.0 - 57.9	100	64
M58	x	58.0 - 63.9	105	70
M64	x	64.0 - 69.9	110	76
M70	x	70.0 - 75.9	110	82
M76	x	76.0 - 81.9	120	86

**** Phase out

BH1000-1 - Electrically operated swaging machine 2.25 tons

BH1000-1 Standard version 220V 1PH 50Hz

Description

Swaging machine with a brake hose capacity from 7.5 to 10 mm. The machine is compact and lightweight and it is designed for crimping brake hoses and air conditioning hoses. Available in standard configuration with double foot pedal.



QC-01



BH1000-1

Product features and specifications

CRIMPING RANGE [mm/inch]	7.5-10/0.29-0.39
MAX CRIMPING FORCE [kN/ton]	22.5/2.25
CALIBRATION	Pressure Regulator / Dial calibrator
MOTOR [kW]	0.5
MAX OPENING [mm]	+13
MAX WORK OPENING*** [mm]	+12
OPERATION	Hydraulic power pack [172 bar/2.500 psi]
NET WEIGHT [kg]	29
GROSS WEIGHT [kg]	35
DIMENSIONS LxWxH [mm]	550x300x 400

* With standard die sets . For specific applications, special die sets are available on request.

** The maximum opening of the machine is the result of the sum of this value and the nominal size number of used master die set. Valid only for S series die set.

*** The maximum working diameter is the result of the sum of this value and the nominal size number of used master die set. Valid only for S series die set.

Die sets – S series

Part Number	Standard	Crimping range [mm]	L [mm]	Ferrule Max Ø (mm)
S06		6.0 - 7.9	40	18
S08		8.0 - 9.9	40	20
S10		10.0 - 12.9	40	22
S13		13.0 - 15.9	40	25
S14		14.0 - 15.9	40	26
S16	x	16.0 - 18.9	40	28
S19	x	19.0 - 21.9	40	31
S22	x	22.0 - 25.9	50	34
S26	x	26.0 - 27.9	50	38
S28	x	28.0 - 33.9	50	40

SPECIAL DIE SETS FOR AIR CONDITIONING APPLICATIONS

Part Number	Ø Standard [mm]	Ø Reduced [mm]
DA10193R6	-	6
DA10193N6R8	6	8
DA10193N8R10	8	10
DA10193N10R12	10	12
DA10193N12R14	12	14

SPECIAL DIE SET FOR BRAKE HOSE APPLICATIONS

Part Number	Ø	L [mm]
DA10312SB02	10.5	40

PRT34 - Vertical swaging machine

CCM/334-0ET Swaging machine PRT34/ET with manual distributor and power pack 380V 3PH 50Hz, incl. n. 4 set of dies std

CCM/334-0EM Swaging machine PRT34/EM with manual distributor and power pack 220V 1PH 50Hz, incl. n. 4 set of dies std

Description

The PRT34 is the ideal machine for crimping hydraulic hoses up to 5/8". It comes with standard equipment of 4 series of dies from 1/4 " to 5/8"



Product features and specifications

CAPACITY [inch]	5/8"
CALIBRATION	Dial calibrator
HYDRAULIC POWERPACK	2.2 kW 380V 50Hz 3ph 2.2 kW 220V 50Hz 1ph
PACKAGING DIMENSIONS LxWxH [mm]	1200 x 600 x 800 (with electric contr. unit)
NET WEIGHT [kg]	87

* With standard die sets . For specific applications, special die sets are available on request.

** The maximum opening of the machine is the result of the sum of this value and the nominal size number of used master die set. Valid only for S series die set.

*** The maximum working diameter is the result of the sum of this value and the nominal size number of used master die set. Valid only for S series die set.

Dies - Standard series

Part Number	Standard	Ø [mm]
CCA/334-007		7
CCA/334-008		8
CCA/334-009		9
CCA/334-010		10
CCA/334-013		13
CCA/334-016	x	16
CCA/334-019	x	19
CCA/334-023	x	23
CCA/334-026	x	26

Dies for brake hoses

Part Number	Ø [mm]
CCA/334-00F	10.5

Dies for air-conditioning

Part Number	Ø [mm]
CCA/334-C15	15
CCA/334-C19	19
CCA/334-C21	21
CCA/334-C25	25

PRT40 - Vertical swaging machine

CCM/340-000-1	Swaging machine PRT40 with manual distributor
CCM/340-000	Swaging machine PRT40 with manual distributor, incl. n.5 set of dies std
CCM/340-0ET	Swaging machine PRT40/ET with manual distributor and hydraulic power pack 380V 3PH 50Hz, incl. n. 5 set of dies std
CCM/340-0EM	Swaging machine PRT40/EM with manual distributor and hydraulic power pack 220V 1PH 50Hz, incl. n. 5 set of dies std

Description

The PRT40 is the ideal machine for crimping hydraulic hoses up to 1". It comes with standard equipment of 5 series of dies from ¼ " to 1".



Product features and specifications

CAPACITY [inch]	1" R9R
CALIBRATION	Dial calibrator
HYDRAULIC POWERPACK**	2.2 kW 380V 50Hz 3ph 2.2 kW 220V 50Hz 1ph
PACKAGING DIMENSIONS LxWxH [mm]	800x 600 x 600(without power pack) 1200 x 600x 800mm (with power pack)
NET WEIGHT * [kg]	75

* Referred to CCM/340-000-1.

** Operated with hydraulic hydraulic power pack (optional three phase or single phase).

Dies - standard series

Part Number	Standard	Ø [mm]
CCA/345-007		7
CCA/345-009		9
CCA/345-010		10
CCA/345-510		10 (special brake hoses)
CCA/345-012		12
CCA/345-013		13
CCA/345-015		15
CCA/345-515		15 (special)
CCA/345-016	x	16
CCA/345-019	x	19
CCA/345-023	x	23
CCA/345-029	x	29
CCA/345-036	x	36

Dies for brake hoses

Part Number	Ø [mm]
CCA/345-00F	10.5

Dies for air-conditioning

Part Number	Ø [mm]
CCA/345-C15	15
CCA/345-C19	19
CCA/345-C21	21
CCA/345-C25	25

PRT80 - Vertical swaging machine

CCM/380-000-1	Swaging machine PRT80 with manual distributor
CCM/380-000	Swaging machine PRT80 with manual distributor, incl. n.7 set of dies std
CCM/380-0ET	Swaging machine PRT80/ET with manual distributor and hydraulic power pack 380V 3PH 50Hz, incl. n. 7 set of dies std
CCM/380-0EM	Swaging machine PRT80/EM with manual distributor and hydraulic power pack 220V 1PH 50Hz, incl. n. 7 set of dies std

Description

The PRT80 is the ideal machine for crimping hydraulic hoses up to 1 1/2". It comes with standard equipment of 7 series of dies from ¼ " to 1 1/2".



Product features and specifications

CAPACITY [inch]	1 ½" R9R.
CALIBRATION	Dial calibrator
HYDRAULIC POWERPACK**	2.2 kW 380V 50Hz 3ph 2.2 kW 220V 50Hz 1ph
PACKAGING DIMENSIONS LxWxH [mm]	800x 600x 600(without power pack) 1200 x 600 x 800 (with power pack)
NET WEIGHT * [kg]	132

* Referred to CCM/380-000-1.

** Operated with hydraulic hydraulic power pack (optional three phase or single phase).

Dies - standard series

Codice	Standard]	Ø [mm]
CCA/389-007		7
CCA/389-009		9
CCA/389-010		10
CCA/389-013		13
CCA/389-014		14
CCA/389-016	x	16
CCA/389-019	x	19
CCA/389-023	x	23
CCA/389-030	x	30
CCA/389-038	x	38
CCA/389-045	x	45
CCA/389-052	x	52

Dies for brake hoses

Part Number	Ø [mm]
CCA/345-00F	10.5

Dies for air-conditioning

Part Number	Ø [mm]
CCA/345-C15	15
CCA/345-C19	19
CCA/345-C21	21
CCA/345-C25	25

PR32 - Hand lever swaging machine

CCM/332-000

Hand lever operated crimping machine PR32, suited for light aluminum and printed steel ferrules with n.2 die sets Ø12mm (standard and reduced sizes) included

Description

Hand lever operated swaging machine for lightweight aluminum ferrules and moulded steel ferrules.



Product features and specifications

CRIMPING RANGE [mm]	12-36
MAX CRIMPING FORCE [kN/ton]	44/4.4
WEIGHT [kg]	20
DIMENSIONS LxWxH [mm]	240x110x345

Dies chart

Part Number	Ø Standard size [mm]	Ø Reduced size [mm]
CCA/332-006	6	-
CCA/332-06R	-	6
CCA/332-008	8	-
CCA/332-012	12	-
CCA/332-12R	-	12
CCA/332-014	14	-
CCA/332-016	16	-
CCA/332-017	17.5	-
CCA/332-019	19	-

Cutting

in!

HCL - Bench mounted electric hose cutting machine

HCL-1PH / HCL-3PH

220V 1PH 50Hz / 380V 3PH 50Hz Version equipped with slotted blade

HCL-1PH-L / HCL-3PH-L

220V 1PH 50Hz / 380V 3PH 50Hz Version equipped with smooth blade

Description

Hose cutting machine with hose capacity up to 1 1/4" (4 wire). The machine is practical and compact and it is ideal for workshop set-up. Available in two different electrical configurations. It can be equipped with slotted or smooth blade and it is designed to be fitted with an external suction unit for fume extraction.



HCL

Product features and specifications

CUTTING RANGE [mm/inch]	3/16"-2" R1AT/1SN/R2AT/2SN (2 wire) 3/16"-1 1/4" R9R/4SP (4 wire)
MOTOR POWER [kW]	2.2
ROTATIONAL SPEED [rpm]	1420
SLOTTED/SMOOTH [mm]	Ø250x3
EXTRACTION PORT SIZE [mm]	Ø51
NET WEIGHT [kg]	42
GROSS WEIGHT [kg]	52
DIMENSIONS LxWxH [mm]	405x385x435

BLADES

Part Number	Dimensions [mm]	Model
CHBL250325D	Ø250x3x25	Slotted
CHBL2502.525	Ø250x2.5x25	Smooth

HCL MOBILE - Mobile hose cutting machine

HCLMOBILE-12VDC / HCLMOBILE-24VDC

12VDC / 24VDC Version equipped with slotted blade

HCLMOBILE-12VDC-L / HCLMOBILE-24VDC-L BLADE

12VDC / 24VDC Version equipped with smooth blade

Description

Mobile electric hose cutting machine with hose capacity up to 1 1/4" (4 wire). The machine is compact and lightweight, it is suitable for use on vans and in workshop. The drive lever allows to carry out accurate cuts minimizing the efforts. It can be equipped with slotted or smooth blade and it is designed to be connected with an external fume suction unit.



HCL MOBILE

Product features and specifications

CUTTING RANGE [inch]	3/16"-1 1/2" R1AT/1SN/R2AT/2SN (2 wire) 3/16"-1 1/4" R9R/4SP (4 wire)
MOTOR POWER [kW]	1.8
SLOTTED/SMOOTH BLADE SIZE [mm]	Ø250
EXTRACTION PORT SIZE [mm]	Ø51
NET WEIGHT [kg]	23
GROSS WEIGHT [kg]	29
DIMENSIONS LxWxH [mm]	500x440x380

BLADES

Part Number	Dimensions [mm]	Model
CHBL2502.540	Ø250x2.5x40	Smooth
CHBL250340D	Ø250x3x40	Slotted

CH75 - Floor mounted electric hose cutting machine

CH75 / CH75-1PH	Floor mounted cutting machine 380V 3ph 50Hz / 220V 1ph 50Hz, up to 1 1/4" (6 wire), 2" (4 wire), 2" (2 wire), 2" (industrial hoses), blade not included
CH75-D / CH75-1PH-D	Floor mounted cutting machine 380V 3ph 50Hz / 220V 1ph 50Hz, up to 1 1/4" (6 wire), 2" (4 wire), 2" (2 wire), 2" (industrial hoses), std. slotted blade included
CH75-L / CH75-1PH-L	Floor mounted cutting machine 380V 3ph 50Hz / 220V 1ph 50Hz, up to 1 1/4" (6 wire), 2" (4 wire), 2" (2 wire), 2" (industrial hoses), std. smooth blade included

Description

The CH75 is an extremely resistant cutting machine for flexible hoses up to 2" (2 and 4 wire) and 1 1/4" (6 wire), also suitable for industrial use. Practical and simple to use, it lets to save time and money. Below there are blade part numbers available to be ordered separately.



CH75

Product features and specifications

CUTTING RANGE [inch]	∅
6 wire	1 1/4"
4 wire	2"
2 wire	2"
INDUSTRIAL HOSE	2"
EXTRACTION PORT SIZE [mm]	75

MOTOR POWER [kW]	4.0
ELECTRICAL CONFIGURATIONS	230/400V 50Hz
WEIGHT [kg]	130
DIMENSIONS LxWxH [mm]	800x550x1150

BLADES

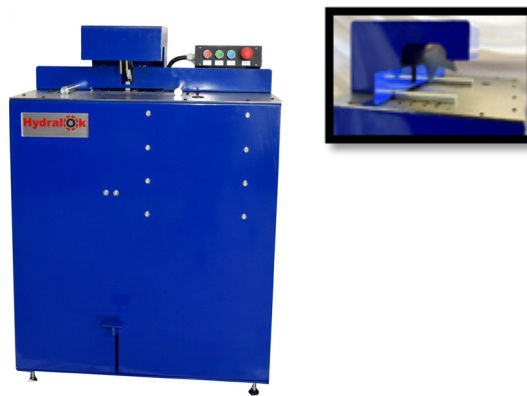
Part Number	Dimensions [mm]	Model
CHBL300332	∅300x3x32	Smooth
CHBL300332D	∅300x3x32	Slotted

CH80 - Floor mounted electric hose cutting machine

- CH80** Floor mounted cutting machine 380V 3ph 50Hz, up to 1" (6 wire), 1 1/2" (4 wire), 2" (2 wire), 2" (industrial hoses), blade not included
- CH80-D** Floor mounted cutting machine 380V 3ph 50Hz, up to 1" (6 wire), 1 1/2" (4 wire), 2" (2 wire), 2" (industrial hoses), std. slotted blade included
- CH80-L** Floor mounted cutting machine 380V 3ph 50Hz, up to 1" (6 wire), 1 1/2" (4 wire), 2" (2 wire), 2" (industrial hoses), std. smooth blade included

Description

CH80 is an innovative cutting machine for flexible hoses up to 2" (2 wire), 1 1/2" (4 wire) e 1" (6 wire); it is equipped with a safety block system for opening rear door to let change blade easily and safely. CH80 cutting machine allows to make accurate cuts thanks to a special V shape lever which push hose against blade, during whole cutting operation.



CH80

Product features and specifications

CUTTING RANGE [inch]	
6 wire	1"
4 wire	1.1/2"
2 wire	2"
INDUSTRIAL HOSE	2"
MOTOR POWER [kW]	4.0
ELECTRICAL CONFIGURATIONS	380V 3PH 50Hz
ROTATIONAL SPEED [rpm]	1450
EXTRACTION PORT SIZE [mm]	Ø100 Back port Ø60 Side port
WEIGHT [kg]	118
DIMENSIONS LxWxH [mm]	800x500x1100

BLADES

Part Number	Dimensions [mm]	Model
CHBL300332	300x3x32	Smooth
CHBL300332D	300x3x32	Slotted

CH80P - Floor mounted electric hose cutting machine

- CH80P** Floor mounted cutting machine 380V 3ph 50Hz, up to 1.1/2" (6 wire), 2" (4 wire), 2" (2 wire), 2" (industrial hoses), blade not included
- CH80P-D** Floor mounted cutting machine 380V 3ph 50Hz, up to 1.1/2" (6 wire), 2" (4 wire), 2" (2 wire), 2" (industrial hoses), std. slotted blade included
- CH80P-L** Floor mounted cutting machine 380V 3ph 50Hz, up to 1.1/2" (6 wire), 2" (4 wire), 2" (2 wire), 2" (industrial hoses), std. smooth blade included

Description

CH80P is a strong and reliable cutting machine for flexible hoses up to 2" (2 wire), 2" (4 wire) e 1.1/2" (6 wire); it is servo-assisted by pneumatic foot pedal which let make easy and soft cut. It is equipped with a safety block system for opening rear door to let change blade easily and safely. CH80P cutting machine allows to make accurate cuts thanks to a special shape of V lever which push hose against blade, during whole cutting operation.



CH80P

Product features and specifications

CUTTING RANGE [inch]	
6 wire	1.1/2"
4 wire	2"
2 wire	2"
INDUSTRIAL HOSE	2"
MOTOR POWER [kW]	4
ELECTRICAL CONFIGURATIONS	380V 3ph 50Hz
ROTATIONAL SPEED [rpm]	1450
EXTRACTION PORT SIZE [mm]	Ø100
WEIGHT [kg]	120
DIMENSIONS HxLxW [mm]	1100x800x500

BLADES

Part Number	Dimension	Model
CHBL300332	Ø300x3x32	Smooth
CHBL300332D	Ø300x3x32	Slotted

HCC3-3PH - Floor mounted electric hose cutting machine

HCC3-3PH

380V 3PH 50 Hz Version

Description

Floor mounted cutting machine for flexible hoses up to 1.1/2" (6 wire) and 2" (4 wire / 2 wire). The machine is the most performing among the available cutters; it allows easy cutting by pneumatic servo-assisted foot pedal, for which compressed air supply at 8 bar is required. In standard configuration, it is equipped with a slotted blade and it is designed to be connected with an external fume suction unit.



HCC3-3PH

Product features and specifications

CUTTING RANGE [inch]	3/16" - 2" R1AT/1SN/R2AT/2SN (2 wire) 3/16" - 2" 4SP (4 wire) 3/16" - 1 1/2" R13/R15/4SH (6 wire)
MOTOR POWER [kW]	5.5
ROTATIONAL SPEED [rpm]	2900
ELECTRICAL CONFIGURATIONS	400V 3PH 50Hz
SLOTTED BLADE DIMENSIONS [mm]	Ø350
EXTRACTION PORT SIZE [mm]	Ø100
NET WEIGHT [kg]	160
DIMENSIONS LxWxH [mm]	1013x520x1135

BLADES

Part Number	Dimensions [mm]	Model
CHBL350340D	350x3x40	Slotted
CHBL350340	350x3x40	Smooth

Flaring / Pre-mounting



HF1 - Portable flaring machine

HF1-1 37° JIC portable flaring machine for rigid pipe up to 1"/25mm, hand pump operated without dies

Description

Manually operated portable flaring machine for 37° JIC flares on rigid pipes up to 1" (25mm), compact and lightweight, it is suitable to be used in workshops or on site.



HF1-1

Product features and specifications

FLARING CAPACITY [mm/inch]	6 - 25/1/4" - 1"
CALIBRATION	Bourdon pressure gauge
OPERATION	twin speed hand pump with integrated relief valve [690 bar/10.000 psi]
NET WEIGHT [kg]	23
GROSS WEIGHT [kg]	29
DIMENSIONS LxWxH [mm]	419x280x250

Metric flaring dies

Part Number	Die size
PF1-DIES-06M	Flaring die 6mm
PF1-DIES-08M	Flaring die 8mm
PF1-DIES-10M	Flaring die 10mm
PF1-DIES-12M	Flaring die 12mm
PF1-DIES-14M	Flaring die 14mm
PF1-DIES-15M	Flaring die 15mm
PF1-DIES-16M	Flaring die 16mm
PF1-DIES-18M	Flaring die 18mm
PF1-DIES-20M	Flaring die 20mm
PF1-DIES-22M	Flaring die 22mm
PF1-DIES-25M	Flaring die 25mm

Imperial flaring dies

Part Number	Die size
PF1-DIES-04I	Flaring die 1/4"
PF1-DIES-05I	Flaring die 5/16"
PF1-DIES-06I	Flaring die 3/8"
PF1-DIES-08I	Flaring die 1/2"
PF1-DIES-10I	Flaring die 5/8"
PF1-DIES-12I	Flaring die 3/4"
PF1-DIES-14I	Flaring die 7/8"
PF1-DIES-16I	Flaring die 1"

HF3 - Flaring machine

HF1-1 37° JIC portable flaring machine for rigid pipe up to 1.1/2" 42mm, hand pump operated without dies

Description

Manually operated portable flaring machine for 37° JIC flares on rigid pipes up to 1.1/2" (42mm). Compact and lightweight, it is suitable to be used in workshops or on site.



HF3-1

Product features and specifications

FLARING CAPACITY [mm/inch]	6 - 42/1/4" - 11/2"
CALIBRATION	Bourdon pressure gauge
OPERATION	twin speed hand pump with integrated relief valve [690 bar/10.000 psi]
NET WEIGHT [kg]	30
GROSS WEIGHT [kg]	36
DIMENSIONS LxWxH [mm]	419x280x250

Metric flaring dies

Part Number	Die size
PF1-DIES-06M	Flaring die 6mm
PF1-DIES-08M	Flaring die 8mm
PF1-DIES-10M	Flaring die 10mm
PF1-DIES-12M	Flaring die 12mm
PF1-DIES-14M	Flaring die 14mm
PF1-DIES-15M	Flaring die 15mm
PF1-DIES-16M	Flaring die 16mm
PF1-DIES-18M	Flaring die 18mm
PF1-DIES-20M	Flaring die 20mm
PF1-DIES-22M	Flaring die 22mm
PF1-DIES-25M	Flaring die 25mm
PF3-DIES-28M	Flaring die 28mm
PF3-DIES-30M	Flaring die 30mm
PF3-DIES-35M	Flaring die 35mm
PF3-DIES-38M	Flaring die 38mm
PF3-DIES-42M	Flaring die 42mm

Imperial flaring dies

Part Number	Die size
PF1-DIES-04I	Flaring die 1/4"
PF1-DIES-05I	Flaring die 5/16"
PF1-DIES-06I	Flaring die 3/8"
PF1-DIES-08I	Flaring die 1/2"
PF1-DIES-10I	Flaring die 5/8"
PF1-DIES-12I	Flaring die 3/4"
PF1-DIES-14I	Flaring die 7/8"
PF1-DIES-16I	Flaring die 1"
PF3-DIES-20I	Flaring die 1 1/4"
PF3-DIES-24I	Flaring die 1 1/2"

HF3-DIN/HF3-COMBI DIN 2353 cutting ring pre-assembling/37° JIC flaring machine

HF3-DIN	Manually operated portable machine for pre-assembling DIN 2353 cutting rings on rigid pipe up to Ø 42 mm, equipped with hand pump
HF3-DIN-P	Manually operated portable machine for pre-assembling DIN 2353 cutting rings on rigid pipe up to Ø 42 mm, equipped with air-hydraulic pump
HF3-COMBI	Manually operated portable machine for pre-assembling DIN 2353 cutting rings and 37° JIC flaring rigid pipe up to Ø 42 mm, equipped with hand pump
HF3-COMBI-P	Manually operated portable machine for pre-assembling DIN 2353 cutting rings and 37° JIC flaring rigid pipe up to Ø 42 mm, equipped with air-hydraulic pump
BOX-DIN-M	Tool set for manually pre-assembling DIN 2353 cutting rings

Description

Manually operated device suitable for service applications, allows to carry DIN 2353 pre-assembling operations on rigid pipes up to Ø 42 mm. With the addition of a dedicated steel block, this machine can also be used for 37° JIC flaring rigid pipes.



HF3-DIN



HF3-COMBI

Product features and specifications

37° JIC FLARING CAPACITY [mm]	6 - 42			
PRE-ASSEMBLING CAPACITY [mm]	6 - 42			
CALIBRATION	Bourdon pressure gauge			
OPERATION	Twin speed hand pump with integrated relief valve / Air-hydraulic pump [690 bar/10.000 psi]			
	HF3-DIN	HF3-DIN-P	HF3-COMBI	HF3-COMBI-P
NET WEIGHT [kg]	21	26	36	41
GROSS WEIGHT [kg]	27	32	42	47
DIMENSIONS LxWxH [mm]	419x280x250	419x280x250	560x280x250	560x280x250

Pre-assembling tool kits for HF3-DIN/HF3-COMBI

Part Number	Die Size	Series
BOX-DIN-KIT	Pre-assembling tool set package – 16 pcs	Light-Heavy
FA-LS06	Pre-assembling tool kit - size 06	Light-Heavy
FA-LS08	Pre-assembling tool kit - size 08	Light-Heavy
FA-LS10	Pre-assembling tool kit - size 10	Light-Heavy
FA-LS12	Pre-assembling tool kit - size 12	Light-Heavy
FA-L15	Pre-assembling tool kit - size 15	Light
FA-L18	Pre-assembling tool kit - size 18	Light
FA-L22	Pre-assembling tool kit - size 22	Light
FA-L28	Pre-assembling tool kit - size 28	Light
FA-L35	Pre-assembling tool kit - size 35	Light
FA-L42	Pre-assembling tool kit - size 42	Light
FA-S14	Pre-assembling tool kit - size 14	Heavy
FA-S16	Pre-assembling tool kit - size 16	Heavy
FA-S20	Pre-assembling tool kit - size 20	Heavy
FA-S25	Pre-assembling tool kit - size 25	Heavy
FA-S30	Pre-assembling tool kit - size 30	Heavy
FA-S38	Pre-assembling tool kit - size 38	Heavy



BOX-DIN-KIT

Metric flaring dies for HF3-COMBI

Part Number	Die size
PF1-DIES-06M	Flaring die 6mm
PF1-DIES-08M	Flaring die 8mm
PF1-DIES-10M	Flaring die 10mm
PF1-DIES-12M	Flaring die 12mm
PF1-DIES-14M	Flaring die 14mm
PF1-DIES-15M	Flaring die 15mm
PF1-DIES-16M	Flaring die 16mm
PF1-DIES-18M	Flaring die 18mm
PF1-DIES-20M	Flaring die 20mm
PF1-DIES-22M	Flaring die 22mm
PF1-DIES-25M	Flaring die 25mm
PF3-DIES-28M	Flaring die 28mm
PF3-DIES-30M	Flaring die 30mm
PF3-DIES-35M	Flaring die 35mm
PF3-DIES-38M	Flaring die 38mm
PF3-DIES-42M	Flaring die 42mm

Imperial flaring dies for HF3-COMBI

Part Number	Die size
PF1-DIES-04I	Flaring die 1/4"
PF1-DIES-05I	Flaring die 5/16"
PF1-DIES-06I	Flaring die 3/8"
PF1-DIES-08I	Flaring die 1/2"
PF1-DIES-10I	Flaring die 5/8"
PF1-DIES-12I	Flaring die 3/4"
PF1-DIES-14I	Flaring die 7/8"
PF1-DIES-16I	Flaring die 1"
PF3-DIES-20I	Flaring die 1.1/4"
PF3-DIES-24I	Flaring die 1.1/2"

Pre-assembling manual tools

Part Number	Die Size	Series
BOX-DIN-M	Pre-assembling manual tool set – 20 pcs	Light-Heavy
L-06M	Pre-assembling manual tool - size 06	Light
L-08M	Pre-assembling manual tool - size 08	Light
L-10M	Pre-assembling manual tool - size 10	Light
L-12M	Pre-assembling manual tool - size 12	Light
L-15M	Pre-assembling manual tool - size 15	Light
L-18M	Pre-assembling manual tool - size 18	Light
L-22M	Pre-assembling manual tool - size 22	Light
L-28M	Pre-assembling manual tool - size 28	Light
L-35M	Pre-assembling manual tool - size 35	Light
L-42M	Pre-assembling manual tool - size 42	Light
S-06M	Pre-assembling manual tool - size 06	Heavy
S-08M	Pre-assembling manual tool - size 08	Heavy
S-10M	Pre-assembling manual tool - size 10	Heavy
S-12M	Pre-assembling manual tool - size 12	Heavy
S-14M	Pre-assembling manual tool - size 14	Heavy
S-16M	Pre-assembling manual tool - size 16	Heavy
S-20M	Pre-assembling manual tool - size 20	Heavy
S-25M	Pre-assembling manual tool - size 25	Heavy
S-30M	Pre-assembling manual tool - size 30	Heavy
S-38M	Pre-assembling manual tool - size 38	Heavy



BOX-DIN-M

Skiving

in!

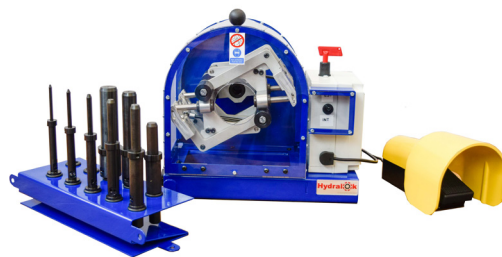
HSE 12V DC - Portable electrical skiving machine

HSE-12VDC-1

Electrical skiving machine 12V with int./ext. skiving capacity up to 1 1/4"

Description

Portable electrical skiving machine for both internal/external hose skiving up to 1 1/4". Compact and lightweight it is ideal for workshop or to be equipped on vans. Its innovative centrifugal technology makes it possible to achieve perfect hose skiving through few and easy steps.



HSE 12V DC

Product features and specifications

EXTERNAL SKIVING CAPACITY [inch]	1/4" - 1 1/4"
INTERNAL SKIVING CAPACITY [inch]	5/8" - 1 1/4"
BLADE MATERIAL	HSS
NET WEIGHT [Kg]	20
GROSS WEIGHT [Kg]	26

External skiving tools

Part number	Size
HSE12V-PE04	Kit per pelatura esterna 1/4"
HSE12V-PE05	Kit per pelatura esterna 5/16"
HSE12V-PE06	Kit per pelatura esterna 3/8"
HSE12V-PE08	Kit per pelatura esterna 1/2"
HSE12V-PE10	Kit per pelatura esterna 5/8"
HSE12V-PE12	Kit per pelatura esterna 3/4"
HSE12V-PE16	Kit per pelatura esterna 1"
HSE12V-PE20	Kit per pelatura esterna 1 1/4"

Internal skiving tools

Part number	Size
HSE12V-PI08	Kit per pelatura interna 1/2"
HSE12V-PI10	Kit per pelatura interna 5/8"
HSE12V-PI12	Kit per pelatura interna 3/4"
HSE12V-PI16	Kit per pelatura interna 1"
HSE12V-PI20	Kit per pelatura interna 1 1/4"

External skiving tools box

Part number	Mandrels
HSE-PEK20	1/4" - 2/8" - 1/2" - 5/8" - 3/4" - 1" - 1 1/4" (KIT N.7 PZ)
HSE-PEK20F	1/4" - 5/16" - 3/8" - 1/2" - 5/8" - 3/4" - 1" - 1 1/4" (KIT N.8 PZ)

Internal skiving tools box

Part number	Mandrels
HSE-PIK20	1/2" - 5/8" - 3/4" - 1" - 1 1/4" (KIT N.5 PZ)

HS1 - Hand Skiver

Description

Hand operated skiver for hydraulic hose with internal/external skiving capacity up to 2". Easy to use and lightweight, it is suitable for workshop or on-site applications.



Product features and specifications

EXTERNAL SKIVING CAPACITY [inch]	1/4" - 2"
INTERNAL SKIVING CAPACITY [inch]	5/8" - 2"
BLADE MATERIAL	HSS
NET WEIGHT [kg]	8
GROSS WEIGHT [kg]	14
DIMENSIONS LxWxH [mm]	520x65x220

External skiving tools

Part Number	MANDREL SIZE
HS1-PE04	1/4"
HS1-PE05	5/16"
HS1-PE06	3/8"
HS1-PE08	1/2"
HS1-PE10	5/8"
HS1-PE12	3/4"
HS1-PE16	1"
HS1-PE20	1 1/4"
HS1-PE24	1 1/2"
HS1-PE32	2"

Internal skiving tools

Part Number	MANDREL SIZE
HS1-PI08	1/2"
HS1-PI10	5/8"
HS1-PI12	3/4"
HS1-PI16	1"
HS1-PI20	1 1/4"
HS1-PI24	1 1/2"
HS1-PI32	2"

External skiving tools box

Part Number	Mandrels
HS1-PEK20	1/4"-3/8"-1/2"-5/8"-3/4"-1"-1 1/4" (KIT N.7 PZ)
HS1-PEK32	1/4"-3/8"-1/2"-5/8"-3/4"-1"-1 1/4"-1 1/2"-2" (KIT N.9 PZ)
HS1-PEK32F	1/4"-5/16"-3/8"-1/2"-5/8"-3/4"-1"-1 1/4"-1 1/2"-2" (KIT N.10 PZ)

Internal skiving tools box

Part Number	Mandrels
HS1-PIK32	1/2"-5/8"-3/4"-1"-1 1/4"-1 1/2"-2" (KIT N.7 PZ)

Accessories

in!

SR1P - Hose storage rack



Product features and specifications

MATERIAL	Steel
SURFACE TREATMENT	Powder coating
DIMENSIONS LxWxH [mm]	1000x1000x2000
NOTE	4 steering wheels, of which 2 braked 2 shelves rests fittings 18 zinc pivots included

SR07 - Seven slots hose reel

Product features and specifications



MATERIAL	Steel
SURFACE TREATMENT	Zinc plated
WEIGHT [Kg]	160
DIMENSIONS LxWxH [mm]	1250 x 1050 x 2200
MAX COIL NUMBER	7
MAX COIL WEIGHT [Kg]	80
MIN INT. COIL Ø [mm]	300
MAX EXT COIL Ø [mm]	850
MAX COIL HEIGHT [mm]	200
NOTE	Single rotating hose reel

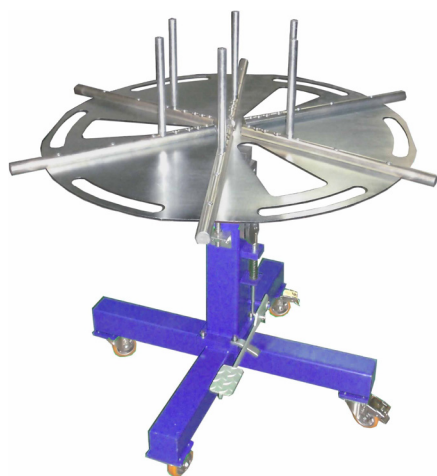
COILS MAX LENGHT (25N HOSE) SIZE	MAX LENGTH [m]
05	260
06	200
08	180
10	140
12	120
16	95
20	80
25	55

SR - One/two disk manual hose coiler/uncoiler

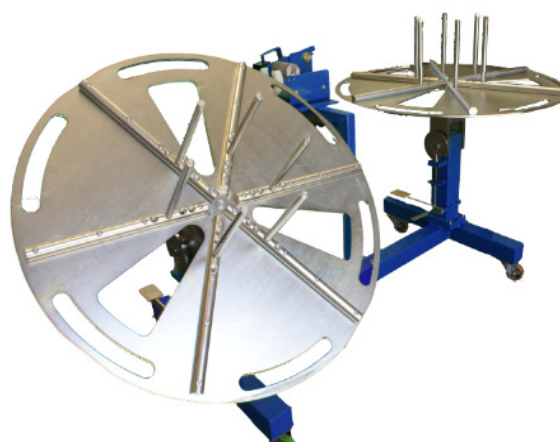
Description

Trolley to facilitate the operations of manual winding and unwinding coils of hydraulic hoses. It is available in both single and double disk versions.. It is possible to adjust the internal diameter of coils in the following size: 200 mm, 250 mm, 325 mm and 400 mm. By tilting the plane it is possible to lock it in the more convenient position in order to make easy the coils loading and unloading operations. The rotating plates are equipped with an adjustable brake system to provide more or less resistance to the rotary movement and are also equipped with shaped slots arranged at 120° to facilitate the binding of the coils.

SR1R/SR2R- coiler/uncoiler



SR1R



SR2R

Product features and specifications

PART NUMBER	SR1R	SR2R
N° OF DISKS	1	2
DISK DIAMETER [mm]	1000	
DIMENSIONS LxWxH [mm]	1100x1000x1000	2276x1000x1000
WEIGHT [Kg]	90	180
MAX LOAD ON SINGLE DISK [Kg]	250	
N° OF ROTATING DISK	2	
INTERNAL COILING DIAMETER [mm]	FROM 200 TO 400	

OPTIONAL

Counter meter up to for 2" hoses (cod. CHC2) with support (cod. SRSCM-S)

SR2R1M - Two disk powered hose coiler/uncoiler

Description

Motorized hose reel with double disk allow simplifying the operations of coiling and uncoiling of hydraulic hoses. It is possible to adjust the internal diameter of the skeins in the following size: 200 mm, 250 mm, 325 mm and 400 mm. The motorized version has only one rotating plane connected to a motor to make easy the step of unwinding or winding. It is operated by a foot pedal with the emergency button incorporated. By tilting the plane it is possible to lock it in the best position in order to make easy the loading and unloading of the coils. The rotating planes are equipped with an adjustable pre-load to provide more or less resistance to the rotary movement and are also equipped with shaped slits arranged at 120° to facilitate the binding of the skeins. The meter counter is available as an optional in double winders version and its position is adjustable according to the diameter of the tube to be rolled up. The structure has a large load capacity and stability.



SR2R1M

Product features and specifications

PART NUMBER	SR2R1M
N° OF DISKS	2
DISK DIAMETER [mm]	1000
DIMENSIONS LxWxH [mm]	2276x1000x1000
WEIGHT [kg]	230
MAX LOAD ON SINGLE DISK[kg]	250
N° OF ROTATING DISK	1 motorized 1 conducted
INTERNAL COILING DIAMETER [mm]	FROM 200 TO 400
MOTOR	0.35 kW 230/400 V - 50Hz

OPTIONAL

Meter counter for 2" diameter hoses (cod. CHC2) with support (cod. SRSCM-S)

CHC2 - Counter Meter

Description

Tool for measuring hose length up to 2" , it is ideal for hose coiling/uncoiling and cutting workstation. It can also be mounted on hose cutting machine without its base. The base can be fixed to the floor and the height can be adjusted for better ergonomics.



CHC2 + CHBC

Product features and specifications

MAX MEASURABLE LENGHT [m]	9999.99
MAX HOSE SPEED [m/min]	200
HOSE DIAMETER [inch]	3/16" to 2"
WEIGHT CHC2 [kg]	6
WEIGHT CHBC [kg]	7

OPTIONAL

Base (code CHBC)

ASP-IFS-2PF – Air cleaner system

ASP-IFS-2PF Air cleaner unit specific for fumes 0,37kW 400V 50Hz, designed to be combined with CH80/CH80P cutting machines. Package includes centrifuge, pocket, HEPA filters and flexible hoses for connecting it to cutter.

Description

ASP-IFS-2PF air cleaner system is suited solution for working with CH80 e CH80P cutting machines; it let to clean air from fumes generated by hydraulic hose cuttings, guaranteeing a healthy working environment. Machine is equipped with centrifuge, pocket, HEPA filters and flexible hoses for quick connecting it to cutter. It is possible to suit it with activated carbon cell (optional).



ASP-IFS-2PF

Product features and specifications

FILTERING STAGES	TYPE	EFFICIENCY GRADE
Pre	Metallic	> 95%
1°	Centrifuge filter auto-cleaning	
2°	Pocket filter with coalescence effect	Fino a 95%
3°	HEPA filter	Fino a 99,995%
(Optional)	Activated carbon cell	

MOTOR [kW]	0.37
ELECTRICAL CONFIGURATIONS	400V 3PH 50Hz
MAX FLOW RATE [m ³ /h]	500
NOISE [dB]	67
EXTRACTION PORT SIZE [mm]	Ø100
NET WEIGHT [kg]	43
DIMENSIONS LxWxH [mm]	370x370x770

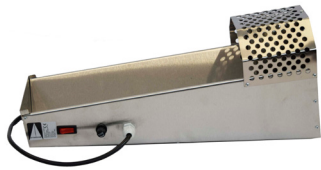
OPTIONAL

Activated carbon cell (cod. CELL-CAAT)

HSMA2/HSMB1 - Oven for heat-shrink caps

Description

Oven for heating shrink caps to be applied on ends of I.M.M. hoses, suited to protect them from external contamination.



HSMB1



HSMA2

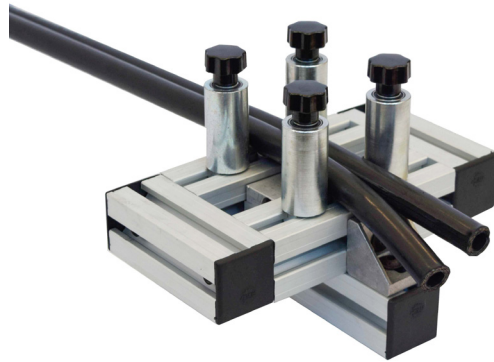
Product features and specifications

PART NUMBER	HSMA2	HSMB1
VERSION	Manual, with support	Bench mounted
WEIGHT [kg]	2	3
DIMENSIONS LxWxH [mm]	480x180x320	480x150x220
MATERIAL	stainless steel	
VOLTAGE [V]	230	
POWER [W]	1000	

MHSXA001 - Universal hose splitter for twin and multiline hoses

Description

An easy-to-use twin hose splitter, it has a basic profile that allows fixing it to any vice. To change blade is very easy; this Al device is lightweight and not subject to corrosive effects due to machine wear.



Product features and specifications

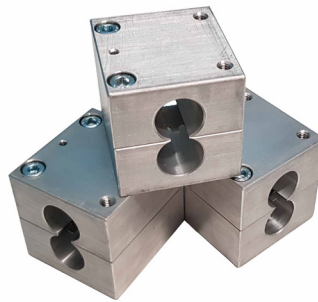
WEIGHT [kg]	2.29
-------------	------

DSTH - Hose splitter bricks for twin and multiline hoses

Description

The DSTH bricks are practical and functional tools, they are indispensable to divide twin and multiline hoses (15C and 25C). There is a specific module for each size, which can be purchased separately depending on the application for which it is suitable.

- For 15C and 25C hoses up to size 12.
- Effective and easy to use equipment.
- Bricks can be ordered individually depending on the application.



Product features and specifications

PART NUMBER	DESCRIPTION
DSTH1K04	TWIN AND MULTILINE HOSE SPLITTER BRICK FOR - 15C06
DSTH1K05-2K04	TWIN AND MULTILINE HOSE SPLITTER BRICK FOR - 15C08-25C06
DSTH1K06-2K05	TWIN AND MULTILINE HOSE SPLITTER BRICK FOR - 15C10-25C08
DSTH1K08	TWIN AND MULTILINE HOSE SPLITTER BRICK FOR - 15C12
DSTH2K06	TWIN AND MULTILINE HOSE SPLITTER BRICK FOR - 25C10
DSTH2K08	TWIN AND MULTILINE HOSE SPLITTER BRICK FOR - 25C12
DSTH2K08-M	TWIN AND MULTILINE HOSE SPLITTER BRICK FOR - 25C12 MARATHON

Analytical Index

CRIMPING.....	pag 3
COMPAK1	pag 5
H19MM	pag 7
H25MINI	pag 9
H25MM	pag 11
H32MM	pag 13
H32ECOSLIM	pag 15
H32	pag 16
H50	pag 18
H50-46	pag 20
H50-6	pag 22
BH1000-1	pag 24
PRT34	pag 25
PRT40	pag 26
PRT80	pag 27
PR32	pag 28
CUTTING.....	pag 29
HCL-1PH/HCL-3PH	pag 31
HCLMOBILE-12VDC/HCLMOBILE-24VDC	pag 32
CH75	pag 29
CH80	pag 30
CH80P	pag 35
HCC3-3PH	pag 36
FLARING/PRE-MOUNTING.....	pag 37
HF1-1	pag 39
HF3-1	pag 40
HF3-DIN/HF3-COMBI.....	pag 41
SKIVING.....	pag 45
HSE12VDC-1	pag 46
HS1	pag 47
ACCESSORIES.....	pag49
SR1P	pag 50
SR07	pag 50
SR/SR1R/SR2R	pag 51
SR2R1M	pag 52
CHC2	pag 53
ASP-IFS-2PF	pag 54
HSMA2/HSMB1	pag 55
MHSXA001	pag 56
DSTH	pag 57



INTERPUMP

FLUID SOLUTIONS 

Powered by I.M.M. Hydraulics



I.M.M. Hydraulics Spa
interpumpfluidsolutions.com

Via Italia, 49-51
66041 - Atessa (Ch) - Italy
T. +39 (0) 0872 889225
F. +39 (0) 0872 889226



CAT-IFS-M