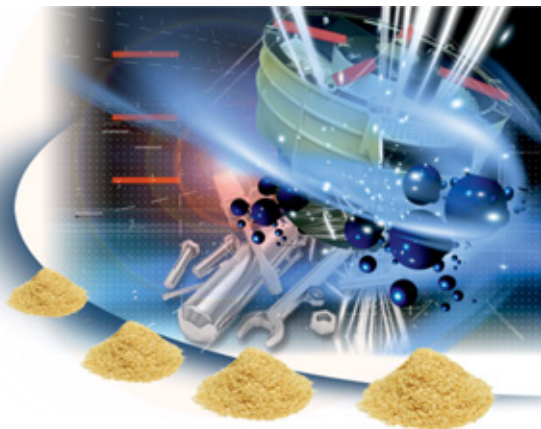


LIGNOCEL® REHOFIX®



**Efficient metal finishing
with natural materials**

LIGNOCEL®
beech wood fibers

REHOFIX®
corncob granules

Wide application field:
Drying, Cleaning, Oil-removal, Polishing,
Smoothing, Grinding, Shot Blasting

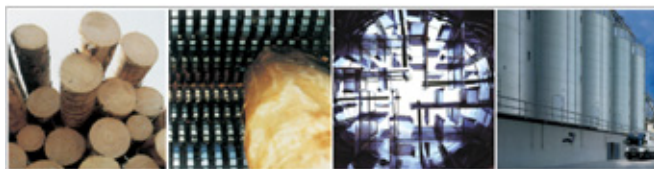
J. RETTENMAIER & SÖHNE
GMBH+CO.KG



Fibers designed
by Nature

LIGNOCEL® - hard wood products

- high absorption capacity of oil, fat and water
- good abrasive effect due to natural hardness
- selected beech wood from Southern Germany with PEFC-Certificate



LIGNOCEL® - soft wood products

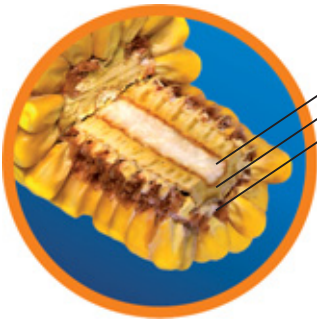
- high absorption capacity of oil, fat and water
- best for simple drying processes
- low bulk density and low specific weight
- selected soft wood products with PEFC certificate

	Particle size
hard wood: LIGNOCEL®	
HBK 300-750	300 µm - 750 µm
HB 500-1000	500 µm - 1000 µm
HBK 750-2000	1200 µm - 1800 µm
soft wood: LIGNOCEL®	
Type 9	800 µm - 1100 µm
S 8-15	1200 µm - 1600 µm

„Count on experience of a qualified system partner!“

REHOFIX® - Corncob granules

- various sizes of granules available to suit different components
- increased cycle time and lower usage
 - due to excellent absorption capacity
 - due to constant hardness
- low costs for disposal
- immediate absorption due to High Performance Fibrillation
- intense surface treatment
- excellent flowability due to roundish particle structure
- excellent abrasive effect due to high specific hardness



Corn cob material

- Pith
- Hard woody ring
- Soft outer chaff (beeswing)

REHOFIX® is produced of the hard woody ring of the corncob.

Properties	REHOFIX®	LIGNOCEL®
Moisture	ca. 10 %	max. 12 %
Water binding capacity	ca. 400 %	ca. 300 %
Oil binding capacity	ca. 350 %	ca. 300 %
Absorption speed	immediate	ca. 40 sec.
ph Value	5.5 +/- 1	5.5 +/- 1
Hardness acc. Mohs	4 - 4.5	1 - 2.5

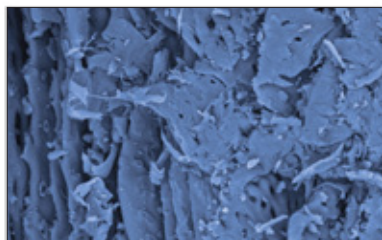


	Particle size
corncob granules: REHOFIX®	
MK 300	200 μm - 400 μm
MK 700	600 μm - 800 μm
MK 1000	800 μm - 1000 μm
MK 1500	1100 μm - 1600 μm
MK 2000	1700 μm - 2200 μm

Technical Competence

Superior fluid / fat absorption is guaranteed by the new improved manufacturing technology

High Performance Fibrillation and the opening of the capillaries!



MK 2000 2012.07.18 11.26 D3,2 x800 100 μm

Surface of the corn cob granules in 800 mag.



REHOFIX® - better working conditions and environmentally friendly

- low in fine particles and dust
- absolutely harmless according to European health norms
- GMO-free
- from renewable resources of German origin
- biodegradable



JRS – a reliable partner

- **Wide product range of wood and corncob products**
- **Service and solution provider**
- **Reliable supply by a globally well positioned company**



Production according to HACCP and PEFC, DIN ISO 9001 certified quality management.

environmentally
friendly and biodegradable
natural wood products
from domestic forests



Packaging:

in Bags on Euro-Pallets
in Big Bags on Euro-Pallets

JRS - worldwide



JRS Headquarters Rosenberg, Germany



JRS Plant Schoolcraft, Michigan, USA

JRS - your strong, reliable industrial partner - worldwide !

- extensive technical know-how
- a flexible partner in production, logistics and service
- worldwide availability with JRS offices and more than 250 agents globally
- 23 production sites in Germany, Finland, UK, USA, Mexico, India, Russia, Hungary
- more than 1800 employees in the JRS Group
- own R & D department and special applications development
- production according to HACCP and PEFC, DIN ISO 9001 certified quality management



23 Production sites in Germany, Finland, UK, USA, Mexico, India, Russia, Hungary

J. RETTENMAIER & SÖHNE
GMBH+CO.KG



**Fibers designed
by Nature**

WORLDWIDE HEADQUARTERS

Business Unit Technical Applications

73494 Rosenberg (Germany)

Phone: + 49 (0) 7967 / 152 414

Fax: + 49 (0) 7967 / 152 500 414

technik@jrs.de • www.jrs.de