



AlpMars S.A.

- +41 (0) 21 311 51 60
- info@alpmars.com
- www.alpmars.com / www.hikerboyscooter.com
- 36 Boulevard Helvétique, 1207 Geneva, Switzerland

Yunyun Internet of Things and Technology

- +86-512-66156086
- +41788636964
- bohua.wang@alpmarschina.com
- www.hikerboyscooter.com
- Room 1003-1, Paradigm Workshop, 10F, Shenzhou Computer Building, Longgang District, Shenzhen, China



URBAN & OFF-ROAD ELECTRIC SCOOTERS

CONTENTS

FOXTROT PLUS 03

CURTIS SERIES 07

OFF-ROAD 2 13

ACCESSORIES 17



FOXTROT PLUS

FOXTROT PLUS

Motor	48V / 500W
Peak power	860W
Slope	20%
Speed	25km/h
Battery	48V / 10.4Ah
Range	45km
Charge time	4-6 H
Tire	10 x 2.7" tubeless
Brake	Drum and disc brake
Weight	20.5kg
Protection	IP54
App	Available

ARC DESIGN



PAGE
5 - 6



ARC-SHAPED DESIGN

Ergonomic design with unique, fashionable style. The swallow-type handlebar makes it more comfortable and stable for easy control and long ride.



PHONE HOLDER AND USB PORT

We take great consideration for your phone adaption. You can place, charge and access your phone during your trip with ease.



4X SHOCK ABSORPTION

You'll be able to tackle potholes, speed bumps, and other urban obstacles with ease. Say hello to a silky-smooth ride that's perfect for commuting or just cruising around town.

REMOVABLE BATTERY

Take control of your ride with our removable and rechargeable battery. Swap in a fresh pack whenever you need to. Charge on-the-go or replace easily if needed - the power is yours!

AUTO-LIGHTING

Ride smart with our auto-lighting feature, which automatically illuminates your path as you ride. No more fumbling in the dark or worrying about being seen.

AMBIENT LIGHTING

Ride in style with our ambient lighting, which adds a touch of sophistication to your urban adventures. The colorful lights create a modern and sleek look that's sure to turn heads.

CURTIS

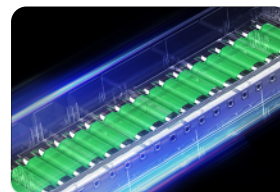
PAGE
7 - 8



CURTIS

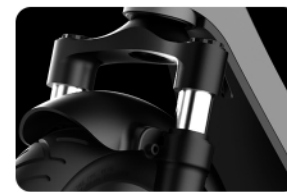


Motor	36V / 350W
Peak power	680W
Slope	15%
Speed	25km/h
Battery	36V / 10.4Ah
Range	40km
Charge time	5.5 H
Tire	10 x 2.5" pneumatic
Brake	Drum and disc brake
Weight	16kg
Protection	IPX5
App	Available



10.4AH BATTERY UPGRADE

Upgraded 10.4Ah battery, 40km range with DMEGC 18650 cells for stability, safety, long life, and BMS protection.



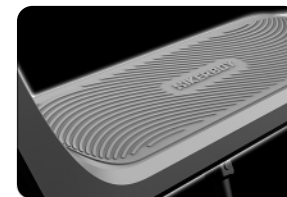
2X SHOCK ABSORBERS

Upgrade the previous city model with additional 2 front spring shock absorbers to bring you a smoother riding experience. More comfortable ride on bumpy roads.



OPTIONAL DC MOTORS

Lower running noise, longer life and reliable performance. 3 configurations available, with a peak power of up to 1000W and a maximum torque of up to 36N.m.



INTEGRATED BODY WORK

Automotive-grade integrated body work protection made of all-aluminum one-piece die casting for strength and light weight.



IPX5 WATERPROOF UPGRADE

The scooter was placed in heavy rain for 12h, and tested in the 5cm depth of the waterlogged road, and can ride without abnormalities.



FRONT AND REAR TURN SIGNALS

Meet the requirements of European national regulations with split front and rear turn signals for higher safety standard.

CURTIS PLUS



Motor	48V / 500W
Peak power	1000W
Slope	20%
Speed	25km/h
Battery	48V / 10.4Ah
Range	40km
Charge time	5.5 H
Tire	10 x 2.125" pneumatic
Brake	Drum and disc brake + E-ABS
Weight	17kg
Protection	IPX5
App	Available

PAGE
11 - 12

HIKERBOY

Motor	48V / 250W x 2
Peak power	1000W
Slope	25%
Speed	25km/h
Battery	48V / 10.4Ah
Range	40km
Charge time	5.5 H
Tire	10 x 2.125" pneumatic
Brake	Disc brake + E-ABS
Weight	19.5kg
Protection	IPX5
App	Available

CURTIS DUAL



HIKERBOY

OFF-ROAD 2



OFF-ROAD 2



Motor	48V / 500W
Peak power	800W
Slope	15%
Speed	25km/h
Battery	48V / 18.2Ah
Range	40km
Charge time	8-10 H
Tire	10" tubeless + 6" pneumatic
Brake	Disc brake + E-ABS
Weight	27kg
Protection	IPX4
App	N/A

4X ENHANCED HEADLIGHT

Get ready to conquer the trails with our beastly 4 times enhanced headlight! This light system throws a wide and powerful beam, illuminating even the darkest trails and rocky inclines.



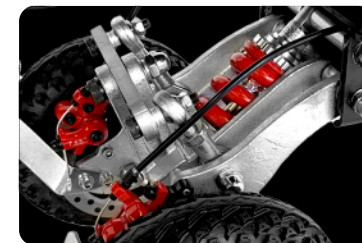
5X SPRING SHOCK ABSORBERS

With 5 times of the absorption power, you'll be able to take on even the most challenging trails, keeping you planted firmly as you tackle gnarly terrain.



UNIVERSAL JOINT

Take on tight turns with ease thanks to our universal joint. This innovative feature ensures you perfect balance, as the rear wheels tip during sharp turns.



ACCESSORIES



REFLECTORS

Clear vision
Precise adjustment
Simple installation
Wide-angle vision



FOLDABLE HELMET

Space-saving
Portable and lightweight
Ventilated design



PORTABLE BAG

Installed on the
scooter or taken down
as backpack
Rainproof zipper



YA-001 (ABS+PP)

High density EPS liner
Thickened sponge



YA-002 (ABS+EPS)

Seamless plastic shell
Front and rear lights



YA-003 (ABS+EPS)

Two sets of liners
Concealed anti-theft lock



RIDING MASK

Free breathing
Extended front collar
Windproof and warmth
Ears protective



GLOVES

Silicone for touch screen
Flexible sleeve pattern
Non-slip palm particles
Suede fabric



POCKET BELT

Compact and convenient
Adjustable strap
Multiple compartments
Hands-free experience