

THE DOCK 69°39

BY SCANDIC

The Dock 69°39 by Scandic

Why settle for ordinary when you can elevate every moment of your Arctic adventure? Welcome to The Dock 69°39 by Scandic, a unique hotel placed in the heart of Tromsø. In this city renowned for its year-round allure, be it the Northern Lights or the midnight sun, we offer a true blend of premium comfort and rich history – while you explore the Arctic on your terms.



New area Vervet

Placed in Tromsø's central, historic Vervet area, The Dock 69°39 by Scandic sits at the crossroads of Arctic wilderness and local history.

The iconic shipyard that once prepared Roald Amundsen's ship "Gjøa" for its famous Arctic expedition in the early 20th century, is now transformed into a modern urban district. Here, in the beating heart of Tromsø, you can explore vibrant local culture right outside the doorstep of our hotel.



- 1 **FRAM**
Salgstrinn 1
Ferdigstilles 2022
- 2 **GJØA**
Salgstrinn 2
Ferdigstilles 2023-2025
- 3 **MAUD**
Salgstrinn 3
Ferdigstilles 2027
- 4 **Maskinverkstedet**
Ferdigstilt 2020
- 5 **Cortenbygget**
Ferdigstilt 2019
- 6 **Sliptorget**
Ferdigstilles 2021
- 7 **Hotell**
Ferdigstilles 2024-2025
- 8 **Fellesarealbygget**
Ferdigstilles 2023
- 9 **Kaipromenade**
Ferdigstilles 2021-2022
- 10 **Småbåthavn**
Ferdigstilles 2023
- 11 **Parkeringsanlegg**
Ferdigstilles 2022
- 12 **Vervet Bakeri**
- 13 **Salgskontor**

Inspired by Tromsø's Arctic culture

The hotel is an iconic landmark inspired by the area's legacy as a shipyard, designed to be a gathering place for both visitors and locals. Our building is 13 floors tall, with 305 charming and delightful rooms situated on the waterfront. Inside you're met with a blend of warm toned Scandinavian colors and design, uniquely amplified with original industrial details. Panoramic windows at every level - bringing the postcard scenery from Tromsø to your bedside in the needs, and framing the starlit skies at night while you enjoy dinner. Depending on the nature of your stay, you are free to choose from a wide range of rooms and suites. We always go the extra mile to meet your needs, and offer several options to connect rooms and suites to make sure you find the ideal size and fit.





In room standard

Inspired by the culture of arctic adventurers past and present, the rooms are designed to create a contemporary warm environment, counterbalancing the wild arctic nature, making them a comfortable and safe point of departure from where your arctic experiences begins and ends. Custom design features and amenities fueled by the areas unique history and identity elevates your stay into a truly singular experience.

Standard Queen Room

Comfortable and cozy rooms with all the amenities you need for a relaxed stay, featuring panoramic windows. Most rooms with daybed overlooking the amazing view of Tromsø harbor and city.

Standard King Room

Comfortable rooms with all the amenities you need for a relaxed stay, featuring panoramic windows. Most rooms with daybed overlooking the amazing view of Tromsø harbor and city.

Superior King Room

Created with the arctic navigator in mind, these comfortable and spacious rooms features all the amenities both for living and relaxing in a manner worthy of a true adventurer. Most rooms with daybed overlooking the amazing view of Tromsø harbor and city.

Family Four

Comfortable and cozy rooms with all the amenities you and your family needs for a relaxed stay, featuring panoramic windows. Most rooms overlooking the amazing view of Tromsø harbor and city.

Family Superior

The perfect base camp for you and your family's arctic experience. Comfortable rooms with all the amenities you and your family needs for a both living and relaxing, featuring panoramic windows. Most rooms overlooking the amazing view of Tromsø harbor and city.

Junior Suite

Spacious suites with separate sleeping and living areas, fully loaded with all the amenities needed for a comfortable and elevated experience. En suite bathroom with separate shower and bathtub in all rooms. All rooms located on upper floors featuring panoramic windows overlooking the amazing view of Tromsø harbor and city.

Master Suite

Located on the hotel's top floor, with spectacular views overlooking Tromsø harbor and city, the suites feature spacious separate sleeping and living areas. En suite bathroom with separate shower and bathtub in all rooms, and spacious walk-in wardrobe facilities. Comfortable living space with all amenities needed both for relaxing and entertaining.

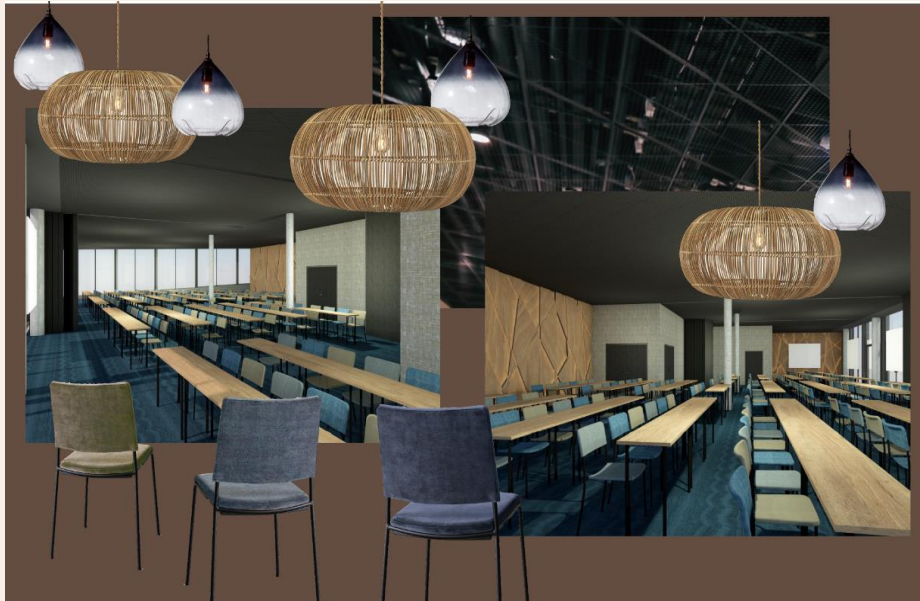
Elevate your stay

With modern comfort in mind, we have crafted every detail and experience to elevate your stay. Enjoy a morning run at our spectacular rooftop running track, or recharge at our cozy, intimate wellness area. Retreat to your soon-to-be favorite corner in our lounge, or take part in the Arctic social scene at our pulsating lobby bar. Discover locally curated dishes at our 10th-floor restaurant, or spend an evening in our rooftop igloo – where a glimpse of the Northern Lights is likely if the skies are clear.



Meeting and event 1 st floor

The Dock 69°39 by Scandic will have conference and event facilities to accommodate 250 people for larger occasions. F&B first floor, planned dining for up to 700 for breakfast, possibility for 350 at lunch and contracted dining.



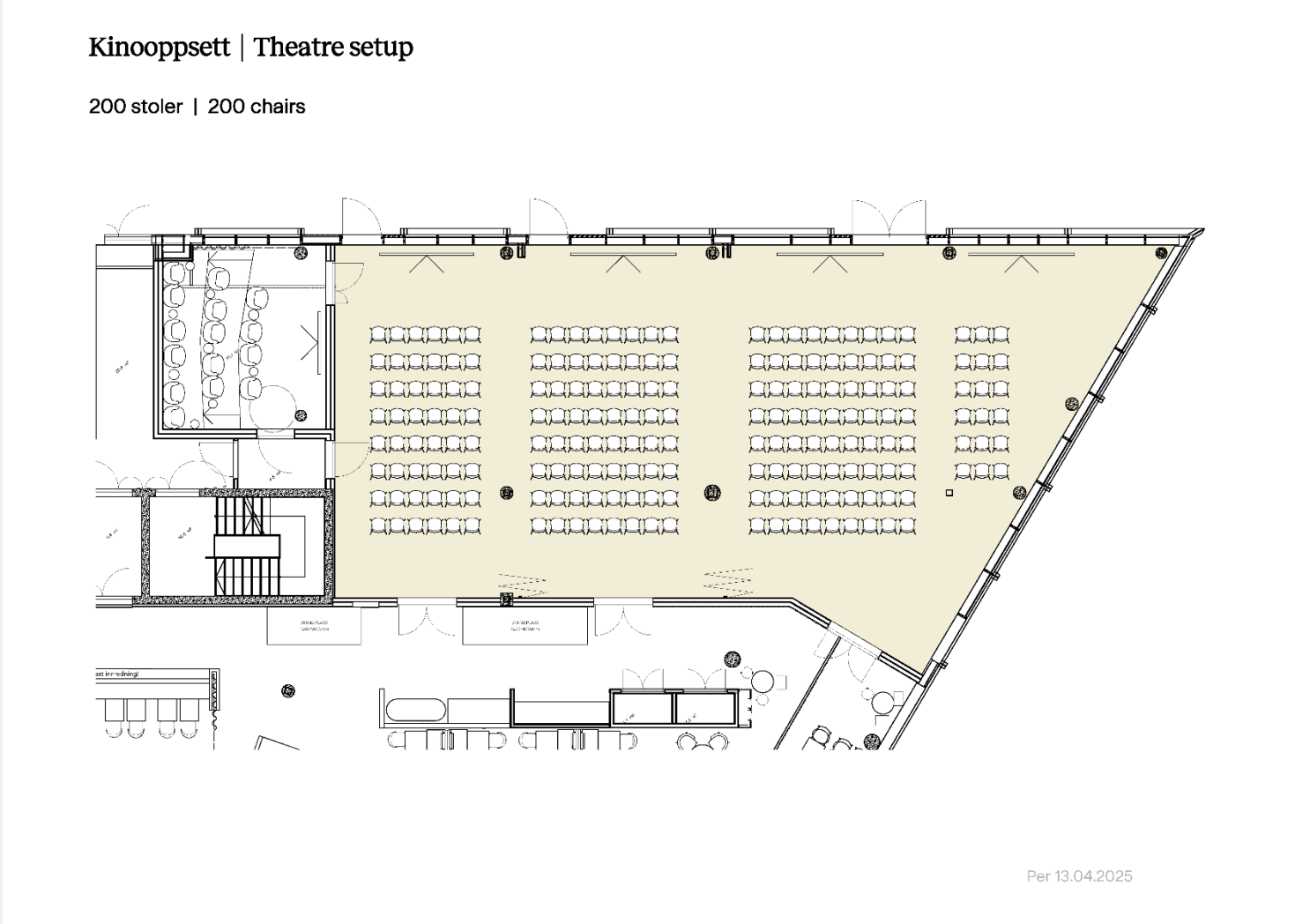
Meeting room capacity

Name	Floor	m2	Theatre	Classroom	Boardroom	Banquet
Dockyard Main Hall	1	273,6	200	150		130
Hall 1	1	67	45	36	18	
Hall 2	1	74,4	65	44	20	
Hall 3	1	132,2	90	70		55
Dockyard Studio 1	3	16,8			6	
Dockyard Studio 2	3	26,6			10	
Dockyard Studio 3	3	31,3			12	
Dockyard Studio 4	3	16,2			8	
Breakout area	3	33				



Meeting and event 1st floor

Dockyard Main Hall

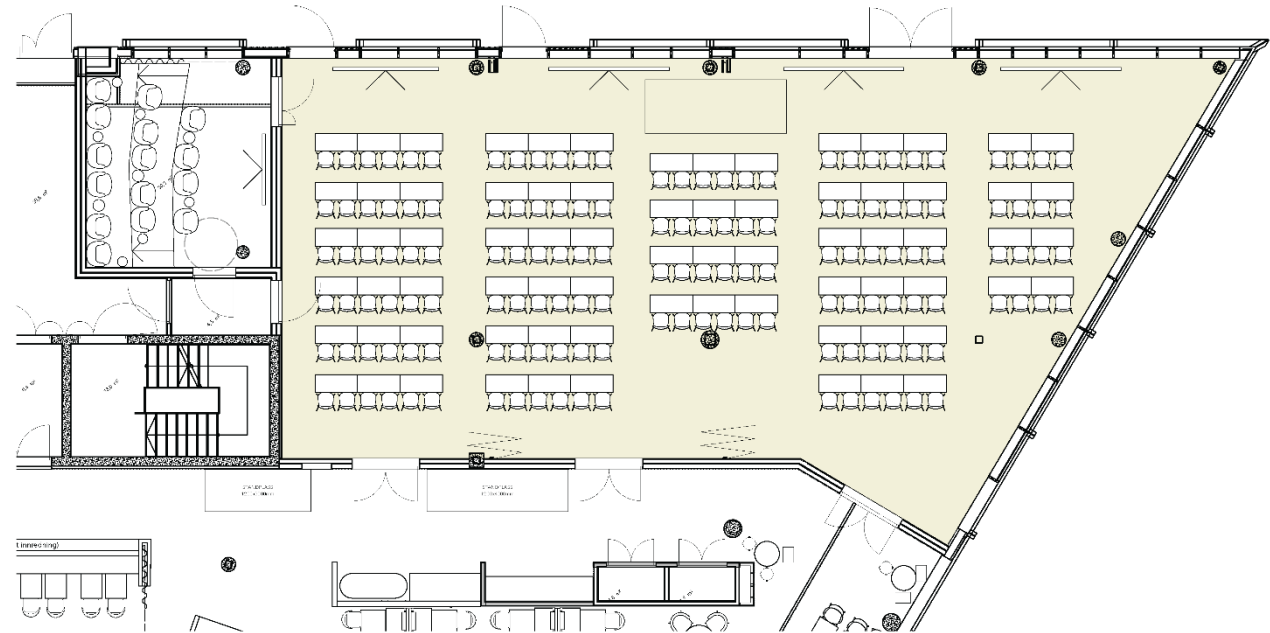


Meeting and event 1st floor

Dockyard Main Hall

Klasseromsoppsett | Classroom setup

150 stoler | 150 chairs



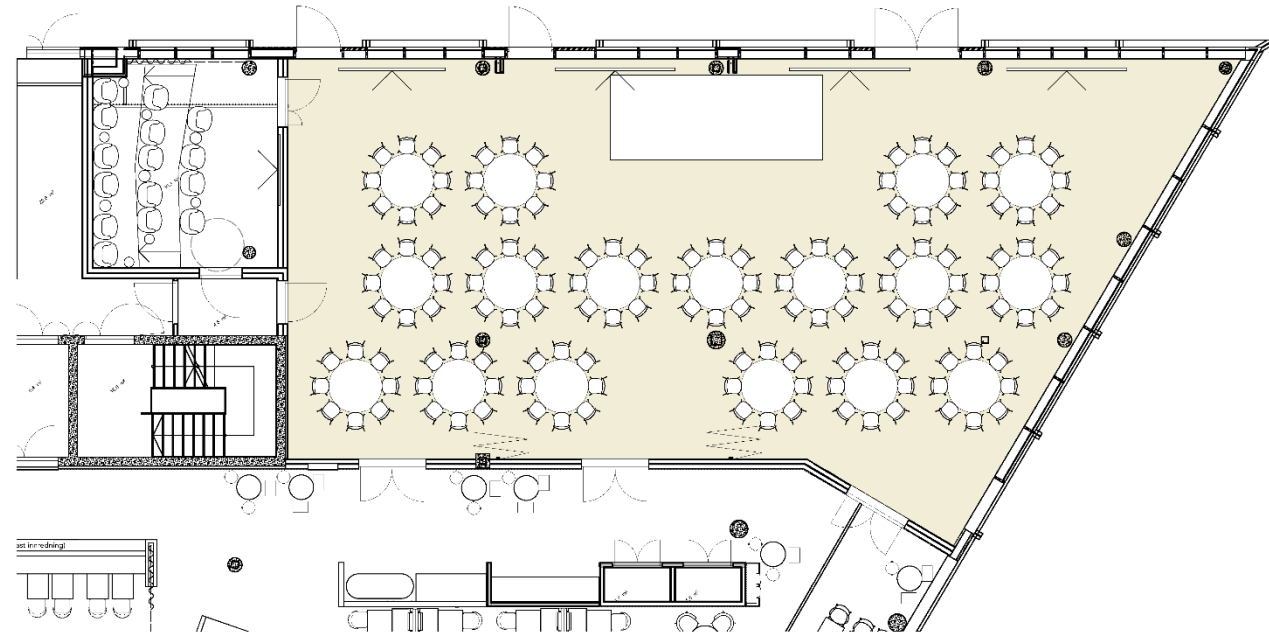
Per 13.04.2025

Meeting and event 1st floor

Dockyard Main Hall

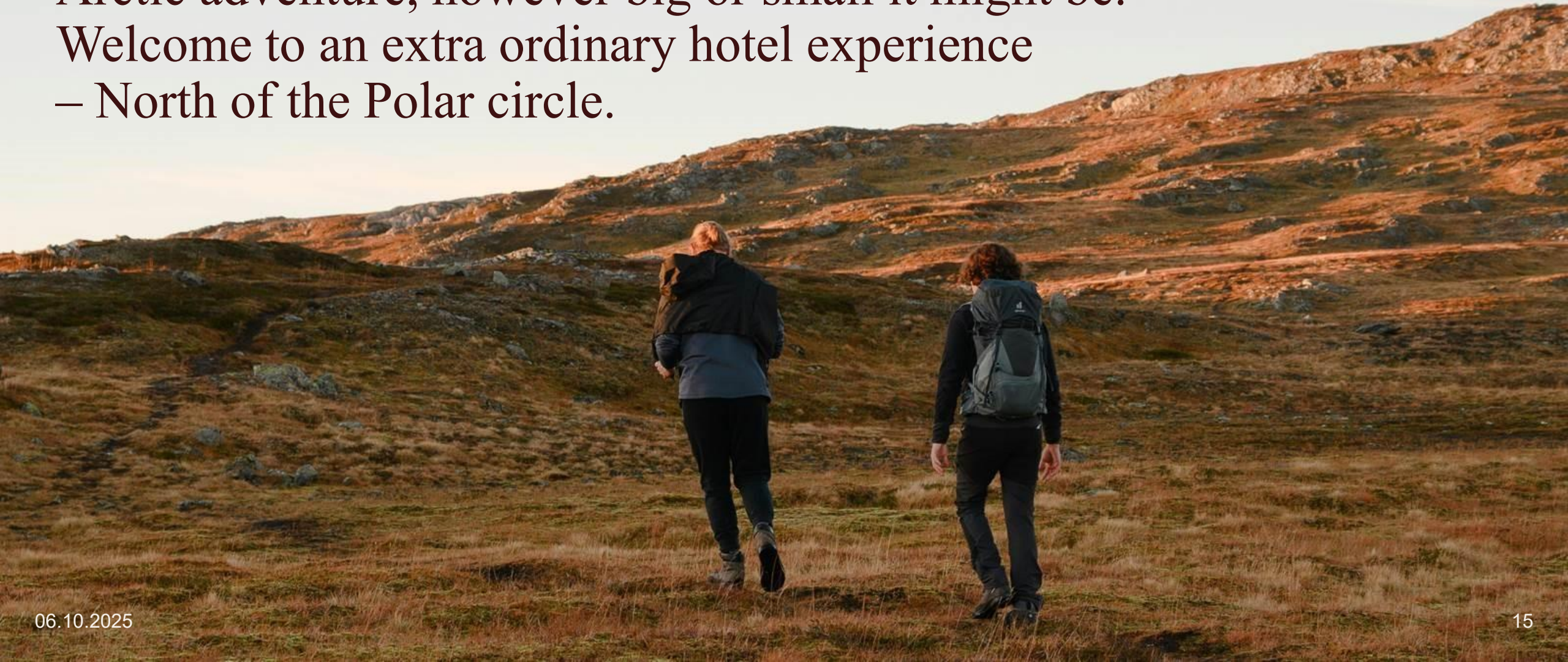
Bankettoppsett | Banquet setup

Bord Ø1500 - 8 stoler | Table Ø1500 - 8 chairs
17 bord, 136 stoler | 17 tables, 136 chairs



Per 13.04.2025

At The Dock 69°39 by Scandic, we strive to elevate your Arctic adventure, however big or small it might be. Welcome to an extra ordinary hotel experience – North of the Polar circle.



Elevate Arctic hospitality



THE DOCK 69°39

BY SCORWOOD



June
Horn
Graham
Nelson



















Your arctic adventure starts here:



scandichotels.no/thedock6939