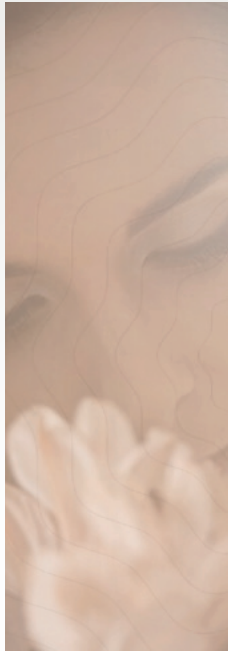
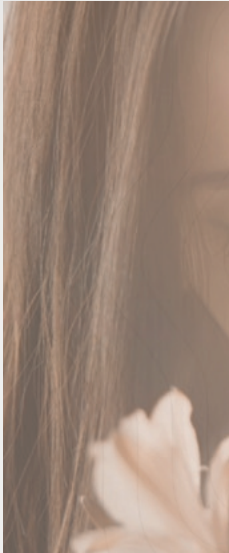
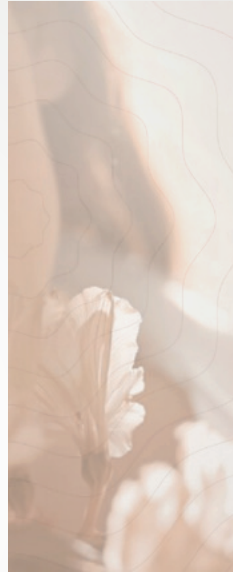


Fragrance



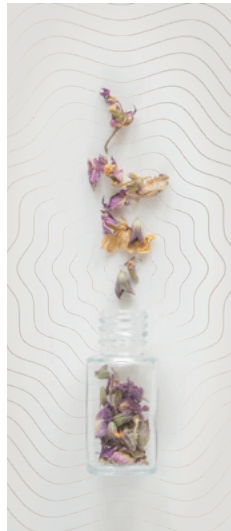
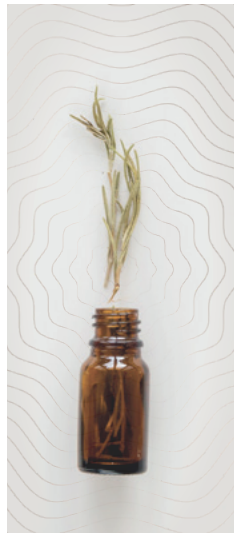
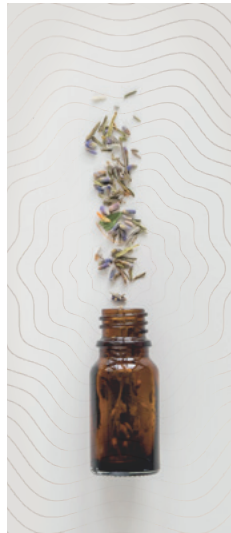
Actifs
précieux



CaptiScent™ CO2 Extracts

Natural & creative *fragrance captives*

Captured essence, untouched and refined,
Supercritical alchemy, for the discerning mind.
Selective fragrance, a whisper so true,
The essence of nature, unveiled for you.



Contact

Widen the scope of creativity with *CaptiScent*TM

Phone : +33 (0)4 72 37 50 00

e-mail : info@actifsprecieux.com

Follow us on LinkedIn : Actifs Précieux

Headquarters:
Lyon, France

Production site 1 :
St Vulbas, France

Production site 3:
Fez, Morocco

R&D :
St Vulbas, France

Production site 2:
Zriba, Tunisia

Table of content

Embrace the poetry of Nature

Contact us	3
About us	8
Our core commitments	10
What we do : green technology	14
Beyond the alchemy of DeepCapt™	16
CaptiScent™ Product Portfolio	18



**CAPTISCENT™ SELECT
CARROT** AP-810 . . . 22



**CAPTISCENT™ RAW
CENTIFOLIA ROSE**
AP-910 24



**CAPTISCENT™ SELECT
CORIANDER** AP-615 . 26



**CAPTISCENT™ R-SELECT
FRANKINCENSE SACRA**
AP-607-R 28



**CAPTISCENT™ SELECT
FRANKINCENSE SACRA**
AP-607 30



**CAPTISCENT™ SELECT
GERANIUM** AP-614 . 32



**CAPTISCENT™ SELECT
GINGER** AP-617 . . . 34



**CAPTISCENT™
LEATHER ABSOLUTE**
AP-631-R 36



**CAPTISCENT™ RAW
NEROLI** AP-405 . . . 38

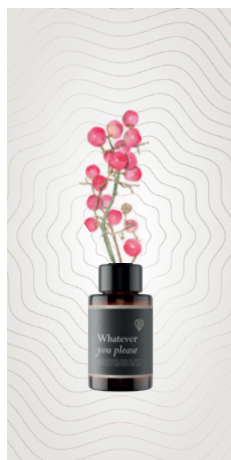
Table of content

Embrace the poetry of Nature

Contact us	3
About us	8
Our core commitments	10
What we do : green technology	14
Beyond the alchemy of DeepCapt™	16
CaptiScent™ Product Portfolio	18



**CAPTISCENT™ SELECT
PARSLEY** AP-818 . . 40



**CAPTISCENT™ SELECT
PINK PEPPER**
AP-607 42



**CAPTISCENT™ SELECT
ROSEMARY** AP-804 . . 44



**CAPTISCENT™ RAW
SPEARMINT** AP-611 . 46



**CAPTISCENT™ RAW
SPEARMINT** AP-608 . 48



**CAPTISCENT™ RAW
VANILLA PLANIFOLIA**
AP-527 50

About us

We are *Actifs Précieux* and we are on a *mission*.

At Actifs Précieux, we are driven by a deep commitment to providing effective, natural, and eco-designed botanical extracts.

We believe that by harnessing the power of nature, we can create products that are both beneficial to people and the planet.

Our core commitments include:

#1. Developing innovative & eco-friendly extraction processes.

#2. Leading the way into a sustainable & circular economy.

#3. Building respectful & long-term partnerships.

#4. Setting new standards in botanical extract quality.

By upholding these commitments, we aim to shape the future of the botanical extract industry, from our Head Office in Lyon, France.

We are proud to be a leader in sustainable and ethical practices, and we are committed to making a positive impact on the world.





Developing innovative and *eco-friendly extraction processes*

We use Supercritical Fluid extraction, a clean and efficient method that utilizes food-grade solvent.

This process allows us to extract a wide range of active compounds from botanicals without the use of harmful chemicals or solvents.

We also focus on minimizing waste and maximizing resource efficiency throughout our extraction process.



Leading the way into a more *sustainable & circular economy*

We source our botanicals from sustainable and ethical growers who share our commitment to environmental stewardship.

We also upcycle plant materials that would otherwise go to waste, such as byproducts from the food and beverage industry.

By working with our suppliers and customers, we are creating a closed-loop system that reduces waste and environmental impact.



Building respectful and *long-term partnerships*

We believe that strong relationships are essential for sustainable business practices.

We work closely with our suppliers to ensure that they are fairly compensated and that their workers are treated ethically.

We ensure that their rights are respected, that their needs are being met, while also guaranteeing them maximum transparency.



Setting new standards in *botanical extract quality*

Our proprietary DeepCapt® technology, coupled with our extensive know-how, allows us to achieve superior results compared to traditional extraction methods.

These extracts boast higher potency, consistency, and unmatched results.

We are further committed to excellence through our cosmetic safety certification (ISO 22716).

This certification ensure the highest quality standards throughout our entire process.

What we do

We provide
holistic resonance
through our
cutting-edge green tech :
DeepCapt®.

Actifs Précieux goes beyond traditional SFE with DeepCapt®.

This innovative technology leverages 15+ years of expertise to unlock the full potential of botanical extracts.

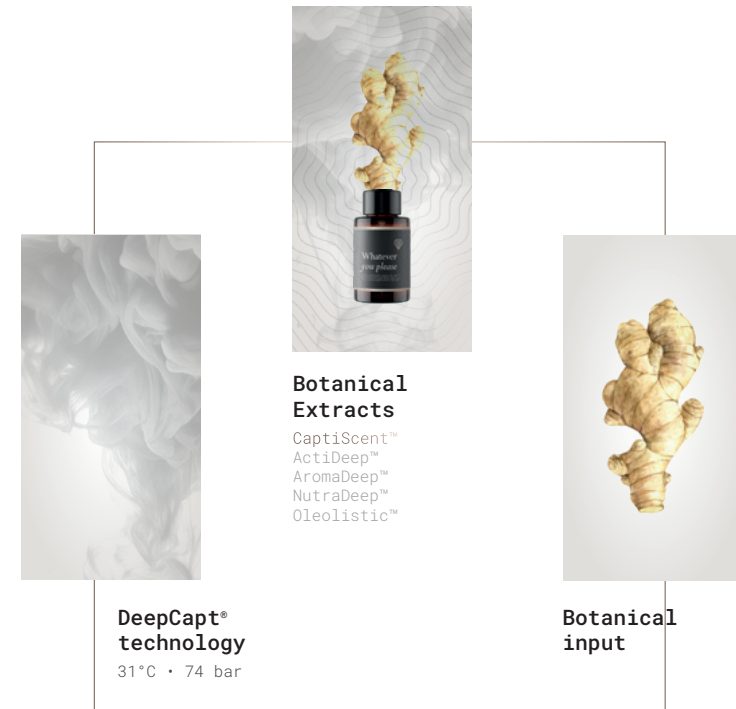
DeepCapt® harnesses the power of Supercritical Fluid Extraction (SFE), a solvent-free process utilizing carbon dioxide above its critical point.

This creates a highly effective yet gentle extraction medium, preserving the delicate balance of active compounds and ensuring unparalleled purity and potency.

DeepCapt® redefines green extraction, offering unparalleled control and precision for a truly unique sensory experience.

Unveil Nature's potential, naturally, with Actifs Précieux's green & sustainable DeepCapt® technology.

How the process works



DeepCapt®: the alchemy *beyond our green technology*

Inert atmosphere

Our supercritical extraction process is performed in an inert atmosphere, meaning the extracted compounds are free from oxidation and degradation.

Cleanliness & Purity

The process behind DeepCapt® does not require harmful solvents and preserve extracts from oxydation. Our finished products are free from any residue, ensuring the highest purity and quality levels.

Creativity & innovation

With an extended range of adjustable parameters, such as temperature, filtration & separation, pressure (up to 600 bar) our process widens the scope of creativity and innovation.

Moderate temperatures

Our technology suits for the extraction of bioactive compounds at moderate temperatures, preserving their integrity and potency.

Upcycling & low carbon footprint

DeepCapt® upcycles botanicals with precision, creating valuable, pure extracts and a low carbon footprint—sustainable, eco-friendly, and innovative.

Effective & selective extractions

The supercritical extraction process allows us to selectively extract specific compounds, providing a high yield of bioactive compounds.



Embrace the poetry of our *Natural fragrance captives*

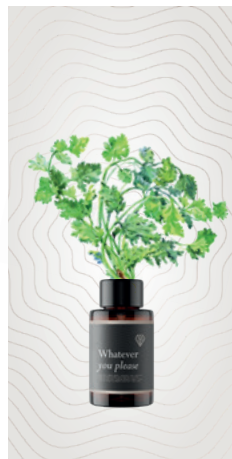
Captured essence, untouched and refined,
Supercritical alchemy, for the discerning mind.
Selective fragrance, a whisper so true,
The essence of nature, unveiled for you.



**CAPTISCENT™ SELECT
CARROT** AP-810 . . . 22



**CAPTISCENT™ RAW
CENTIFOLIA ROSE**
AP-910 24



**CAPTISCENT™ SELECT
CORIANDER** AP-615 . . 26



**CAPTISCENT™ R-SELECT
FRANKINCENSE SACRA**
AP-607-R 28



**CAPTISCENT™ SELECT
FRANKINCENSE SACRA**
AP-607 30



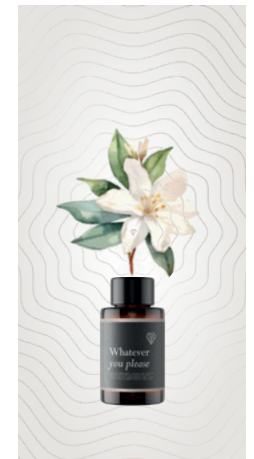
**CAPTISCENT™ SELECT
GERANIUM** AP-614 . . 32



**CAPTISCENT™ SELECT
GINGER** AP-617 . . . 34



**CAPTISCENT™
LEATHER ABSOLUTE**
AP-631-R 36



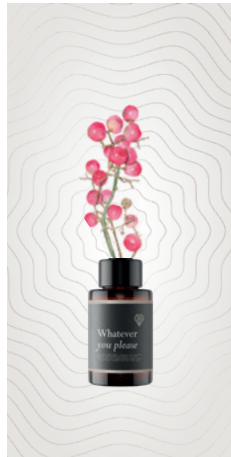
**CAPTISCENT™ RAW
NEROLI** AP-405 . . . 38

Embrace the poetry of our *Natural fragrance captives*

Captured essence, untouched and refined,
Supercritical alchemy, for the discerning mind.
Selective fragrance, a whisper so true,
The essence of nature, unveiled for you.



**CAPTISCENT™ SELECT
PARSLEY** AP-818 . . 40



**CAPTISCENT™ SELECT
PINK PEPPER**
AP-607 42



**CAPTISCENT™ SELECT
ROSEMARY** AP-804 . . 44



**CAPTISCENT™ RAW
SPEARMINT** AP-611 . . 46



**CAPTISCENT™ RAW
SPEARMINT** AP-608 . . 48



**CAPTISCENT™ RAW
VANILLA PLANIFOLIA**
AP-827 50

CAPTISCENT™ R-SELECT ANIMAL • AP-530
PROCAVIA CAPENSIS • ORIGIN : TUNISIA / FRANCE / ITALY •
CAS : 1005328-84-6

CaptiScent™ R-Select

Animal

CaptiScent™ R-Select Animal is a captivating fragrance captive extracted using Supercritical Fluid Extraction (SFE), offering a unique and intense animalistic scent. Its deeply complex profile is a masterful blend of Musk, Castoreum, Civet, Tobacco, and Agarwood, creating a powerfully evocative olfactory experience.


This fragrance captive is particularly prized for its ability to add depth and richness to oud reconstitutions.

Its animalic facets provide a foundational element that enhances the oud's natural complexity and luxurious character.

CaptiScent™ R-Select Animal is a versatile ingredient that can be used in a wide range of fragrance applications, from fine perfumes to home scents. Its intense and captivating aroma will leave a lasting impression on the wearer and those around them.

A symphony of darkness, so deep and true,
Musk, castoreum, civet, a haunting hue.
Tobacco's richness along agarwood's grace,
A fragrance that lingers and leaves a trace.



Embrace the poetry of Nature  Actifs précieux

CAPTISCENT™ SELECT CARROT SEED • AP-810
DAUCUS CAROTA SATIVA SEED • ORIGIN : TUNISIA
CAS : 8015-88-1 • NATURAL

CaptiScent™ Select

Carrot seed

DeepCapt® unlocks the true essence of carrot seed. This innovative technique yields a captive fragrance unlike any other, capturing the multifaceted nature of the raw ingredient.

The opening presents a surprising citrusy burst, reminiscent of orange rind with a touch of earthy green.

As it settles, a warm, spicy undercurrent emerges, evoking notes of cumin and peppery ginger.

A hint of floral sweetness lingers in the background, adding a touch of complexity.

The overall effect is both fresh and comforting, earthy yet uplifting. Carrot seed fragrance captive, extracted via our green technology, offers a unique and versatile palette for perfumers seeking a distinctive and memorable note.



CAPTISCENT™ RAW CENTIFOLIA ROSE • AP-910
ROSA CENTIFOLIA FLOWER • ORIGIN : TUNISIA
CAS : 84604-12-6 • NATURAL

CaptiScent™ Raw

Centifolia Rose

Centifolia Rose captive, extracted using DeepCapt®, offers a unique and multifaceted olfactive profile prized by perfumers.

The fragrance opens with a honeyed sweetness, reminiscent of May rose absolute, intertwined with fresh, green nuances.

As it develops, a velvety texture emerges, adorned with delicate floral notes of rose and geranium.

The drydown reveals a subtle whisper of fruit, adding a touch of complexity to this captivating fragrance.



CAPTISCENT™ SELECT CORIANDER • AP-615
CORIANDRUM SATIVUM FRUIT • ORIGIN : TUNISIA
CAS : 84775-50-8 • NATURAL



CaptiScent™ Select

Coriander

Harness the essence of coriander like never before.

DeepCapt®, our innovative extraction process, captures the plant's complete aromatic profile, delivering a remarkably vivid and complex scent.

The top notes burst with a refreshing citrusy zing, reminiscent of lemongrass and lime.

As the fragrance unfolds, a whisper of herbaceous greenness emerges, akin to parsley with a touch of earthy warmth.

Underlying it all is a subtle current of peppery spice, lending a touch of intrigue and depth.

This is coriander, reimagined. Experience the full aromatic potential of this versatile botanical.

A touch of blossom, soft and sweet,
A verdant heart, a citrus gleam,
The fragrance lingers, bittersweet,
Coriander's whisper, a fragrant dream.



Embrace the poetry of Nature  Actifs précieux

CAPTISCENT™ SELECT FRANKINCENSE SACRA • AP-602
BOSWELLIA SACRA RESIN • ORIGIN : OMAN
CAS : 8050-07-5 • NATURAL •

CaptiScent™ Select

Frankincense *Sacra*

This CO2 extracted fragrance captive delivers a remarkably nuanced olfactory profile.

Top notes of bright lemon and elemi dance with a subtle balsamic undercurrent, evoking a sense of crisp mountain air.

As the fragrance unfolds, warm spices emerge, intertwined with a resinous depth, reminiscent of ancient temples bathed in sunlight.

The drydown reveals a touch of smokiness, creating a truly evocative and spiritual aroma.

CaptiScent™ Select Frankincense Sacra offers perfumers a versatile and authentic expression of this timeless ingredient.



Citrusy zest with earthy sighs,
A fragrance that awakens wise.
Spicy whispers, warm and deep,
Frankincense dreams, secrets to keep.

Embrace the poetry of Nature  Actifs précieux

CAPTISCENT™ R-SELECT FRANKINCENSE SACRA • AP-602-R
BOSWELLIA SACRA RESIN • ORIGIN : OMAN
CAS : 8050-07-5 • NATURAL

CaptiScent™ R-Select

Frankincense *Sacra*

This slightly different version of Frankincense Sacra CO2 fragrance captive is made from upcycled parts of the botanical.

Top notes of bright lemon and elemi dance with a subtle balsamic undercurrent, evoking a sense of crisp mountain air.

As the fragrance unfolds, warm spices emerge, intertwined with a resinous depth, reminiscent of ancient temples bathed in sunlight.

The drydown reveals a touch of smokiness, creating a truly evocative and spiritual aroma.

CaptiScent™ Select Frankincense Sacra offers perfumers a versatile and authentic expression of this timeless ingredient.

Citrusy zest with earthy sighs,
A fragrance that awakens wise.
Spicy whispers, warm and deep,
Frankincense dreams, secrets to keep.



Embrace the poetry of Nature  Actifs précieux

CAPTISCENT™ RAW GERANIUM • AP-614
PELARGONIUM GRAVEOLENS LEAF • ORIGIN : TUNISIA
CAS : 8000-46-2 • NATURAL

CaptiScent™ Raw

Geranium

Geranium Captive, extracted through DeepCapt® Supercritical Fluid Extraction (SFE), offers a versatile and consistent take on the classic geranium note.

Unlike traditional steam distillation, SFE yields a cleaner, brighter profile, emphasizing the rosy facets and green nuances.

Perfumers will appreciate the absence of heavier herbal notes, allowing the composition to shine through.

This captive offers a reliable foundation for floral fragrances, particularly rose and tea rose accords.

Crisp green whispers dance on a summer breeze,
Mingling with a blush of rose's sweet delight.
A vibrant echo, a memory that appease,
Geranium's essence, a day bathed in sunlight.



Embrace the poetry of Nature  Actifs précieux

CAPTISCENT™ SELECT GINGER ROOT • AP-617
ZINGIBER OFFICINALE ROOT EXTRACT • ORIGIN : NIGERIA
CAS : 84696-15-1 /8007-08-7 • NATURAL

CaptiScent™ Select

Ginger

Our DeepCapt® green technology unlocks a unique ginger fragrance captive, offering a fresh and vibrant olfactive profile.

The top notes unveil a burst of zesty lemon and crisp lime, intertwined with the warm, spicy character of ginger root.

As the fragrance evolves, a subtle nuance of earthy vetiver emerges, grounding the composition.

This ginger captive presents perfumers with a versatile and multifaceted base, ideal for crafting contemporary and captivating fragrances.



CAPTISCENT™ R-SELECT LEATHER ABSOLUTE • AP-631-R
ORIGIN : FRANCE • NATURAL

CaptiScent™ R-Select

Leather *Absolute*

Our DeepCapt® technology unlocks a luxurious leather fragrance captive, directly delivering the rich and complex smell of genuine leather.

The top notes open with a subtly smoky birch tar accord, unleashing the raw power of leather.

As the fragrance unfolds, smooth, buttery orris blends with leather's warm, earthy depth, creating an authentic, multifaceted scent.

A lingering whisper of dry, powdery musk provides elegance and ensures long-lasting wear.



CAPTISCENT™ RAW NEROLI • AP-405
CITRUS AURANTIUM FLOWER • ORIGIN : TUNISIA
CAS : 8016-38-4 • NATURAL

CaptiScent™ Raw

Neroli

This neroli fragrance captive offers a pristine and nuanced take on the classic orange blossom note.

The headspace faithfully captures the flower's delicate character, revealing a bright citrus opening intertwined with subtle green nuances.

As it unfolds, the fragrance heart unveils a sophisticated floral character.

Honeyed inflections emerge, mingling with a touch of indolic depth, reminiscent of jasmine.

The result is a well-rounded and elegant neroli essence, perfect for lending a touch of springtime luxury to any formulation.



CAPTISCENT™ SELECT PARSLEY • AP-818
PETROSELINUM CRISPUM SEED • ORIGIN : TUNISIA
CAS : 8000-68-8 • NATURAL



CaptiScent™ Select

Parsley

Unveiling a new dimension of herbal intrigue, Parsley Seed extract offers a unique and multifaceted olfactory profile.

At its core lies a crisp, vegetal note, reminiscent of freshly cut stems and dewy meadows.

This verdant character is then enlivened by subtle nuances of spice, hinting at warm pepper and a touch of earthy celery seed.

As the fragrance unfolds, a whisper of sweetness emerges, like the delicate nectar of a hidden wildflower.

The result is a captivating aromatic tapestry, both enlivening and subtly sophisticated.



CAPTISCENT™ SELECT PINK PEPPER • AP-607
SCHINUS TEREBINTHIFOLIUS FRUIT
ORIGIN : MADAGASCAR
CAS : 949495-68-5 • NATURAL



CaptiScent™ Select

Pink Pepper

Pink peppercorn, meticulously extracted through DeepCapt®, unveils a captivating aromatic profile.

The initial burst offers a vibrant interplay of peppery warmth and citrusy freshness, reminiscent of juniper berries.

As it unfolds, a subtle woody depth emerges, laced with hints of balsamic sweetness. This unique character lends itself beautifully to a variety of cosmetic applications.

The aroma's complexity allows for intriguing layering within a fragrance. The lively top notes can add a touch of intrigue to floral compositions, while the balsamic undertones provide a grounding warmth to spicy or oriental accords.

Pink peppercorn extract offers perfumers a versatile tool to create captivating and memorable scents.

Zest and warmth, a playful accord,
Juniper's echo, gracefully poured.
Subtle sweetness, a touch of the woods,
Pink Pepper magic, simply misunderstood.



Embrace the poetry of Nature  Actifs précieux

CAPTISCENT™ SELECT ROSEMARY • AP-804
ROSMARINUS OFFICINALIS LEAF • ORIGIN : TUNISIA
CAS : 8000-25-7 • NATURAL



CaptiScent™ Select

Rosemary

Rosemary, a timeless botanical known for its invigorating aroma, now offers perfumers a unique palette with our pure fragrance captive.

Expect a refreshingly herbaceous opening, alive with crisp, uplifting camphoraceous notes.

Hints of eucalyptus and pine weave through the heart, evolving into a subtly woody drydown.

This versatile captive offers perfumers the freedom to explore the multifaceted character of rosemary, adding a touch of invigorating elegance to a wide range of fragrance creations.



CAPTISCENT™ RAW SAFFRON • AP-611
CROCUS SATIVUS STIGMAS • ORIGIN : IRAN
CAS : 8022-19-3 • NATURAL

CaptiScent™ Raw

Saffron

Derived through DeepCapt® Supercritical Fluid Extraction (SFE), our new Saffron fragrance captive offers a unique and nuanced olfactive profile.

Gone are the heavy, earthy notes often associated with traditional saffron extracts. This innovative technique unveils a lighter, brighter expression of the saffron essence.

Expect delicate saffron nuances interwoven with subtle hints of honey and hay.

The result is a captivating fragrance element perfect for composing sophisticated and modern olfactive creations.



Beyond the spice, a golden heart unfolds,
Essence of sunshine, a story yet untold.
Supercritical kiss, a whisper light and pure,
A fragrance captive, forever to endure.

Embrace the poetry of Nature  Actifs précieux

CAPTISCENT™ SELECT SPEARMINT • AP-608
MENTHA SPICATA LEAF • ORIGIN : TUNISIA
CAS : 84696-51-5

CaptiScent™ Select

Spearmint

Spearmint Captive offers a fresh, invigorating fragrance profile true to the botanical.

Uplifting green nuances mingle with crisp, minty facets, evoking a sense of cleanliness and energy.

The aroma unfolds with a subtle sweetness, balanced by a cooling herbal depth.

This versatile captive provides perfumers with a reliable and consistent source of the essence of spearmint, perfect for a variety of fragrance applications.



CAPTISCENT™ RAW VANILLA PLANIFOLIA • AP-827
VANILLA PLANIFOLIA BEANS • ORIGIN : MADAGASCAR
CAS : 84650-63-5 • NATURAL



CaptiScent™ Raw

Vanilla *Planifolia*

Derived through supercritical fluid extraction, our Vanilla Planifolia fragrance captive offers an unparalleled olfactory experience.

This innovative technique bypasses traditional solvents, capturing the orchid's delicate floral nuances alongside the rich, familiar vanilla pod character.

The resulting fragrance oil presents a complex profile, untainted by harsh solvent notes.

Perfumers will appreciate the vibrant top notes hinting at jasmine and heliotrope, seamlessly evolving into a warm, creamy vanilla heart.

This captive offers exceptional tenacity and diffusion, ideal for crafting long-lasting and luxurious vanilla fragrances.

Subtle whispers of what could have been,
A fleeting aroma, a memory within.
This essence captured, a promise set free,
Vanilla's pure magic, a gift for all to see.



Embrace the poetry of Nature  Actifs précieux

CaptiScent™

On-demand *extracts*

Embark on a journey of excellence with our on-demand Supercritical Fluid Extraction, meticulously tailored for the cosmetic and fragrance markets.

Our commitment goes beyond extraction—we foster proximity with farmers, sharing values that ensure sustainability and ethical practices.

Exclusive, enduring partnerships with producers in the Mediterranean region underscore our dedication to quality and traceability.

With specialized sourcing spanning the globe, we curate ingredients that reflect the richness of diverse landscapes.

Elevate your formulations with precision-extracted elements, a testament to our dedication to authenticity and a sustainable, interconnected global community.

Redefine luxury with ingredients perfected through lasting relationships and global expertise.

Supercritical extracts, bespoke and grand,
For scents and beauty, at your command.
Ethical sourcing, a bond that holds true,
Luxury redefined, for me and for you.



