

CONVERSATIONAL AI

TALKS TO YOU IN NATURAL LANGUAGE

UNDERSTANDS YOUR INTENTIONS

ASSISTS AND GUIDES YOU IN YOUR REQUESTS

ORGANIZES YOUR APPOINTMENTS

POLARIS!

An expert by your side



POLARIS!

YOU CALL, **YOUR REQUEST IS UNDERSTOOD AND PROCESSED IN LESS THAN 30 SECONDS.**

90%
of identified
processes

60% of the intentions are
processed
up to **1,800** calls per hour

100% Artificial Intelligence
100% of calls are
answered

Conversational AI agent

created for the retail sector, administrations, companies and healthcare institutions.

CONVERSATION AI AGENT

EASY AND USER FRIENDLY

POLARIS! is a simple and easy solution to deploy, fully compatible with your IVR.

EFFICIENT AND AGILE

POLARIS! powered by Spitch, global provider of B2B and B2C Conversational AI solutions, enables you to better serve your client by create customized dialogue flows.

COST EFFECTIVE AND ATTRACTIVE

POLARIS! is a SaaS solution that can be deployed in a few days.



A FULLY OPERATIVE CRM

EXPERTS

POLARIS! has developed expert systems for several verticals such as healthcare, retail and administrations.

EFFICIENCY

POLARIS! has a library of predefined processes: appointment booking, identification, interactive dialogues by sector.

CUSTOMER PROXIMITY

Order POLARIS! from your local provider, who will take care of service and support.

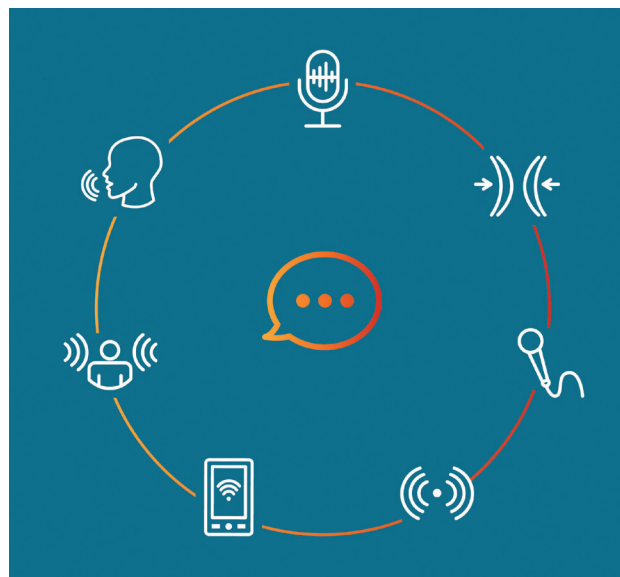
When it comes to customer relations, the first 30 seconds are crucial. Take advantage and show your best.

POLARIS! CONVERSATIONAL AI BENEFITS

Semantic Recognition, AI to better serve your customers.

This technology has several key advantages:

- ✓ Multi-channel: Telephone, chat, internet.
- ✓ Smooth conversational strategy up to appointment bookings.
- ✓ Positive emotional impact for your interlocutors.
- ✓ Information based the context.
- ✓ Advanced customer experience.
- ✓ Qualification of recurring requests enabling direct transfert.
- ✓ No waiting in longs queues on the phone.



 **LIAISON VOCALE**
100% CRM SOLUTION

CONTACT

+33 1 84 04 03 70
commercial@liaisonvocale.com
12, Place Colonel Beltrame
Versailles 78000 - France



www.liaisonvocale.com