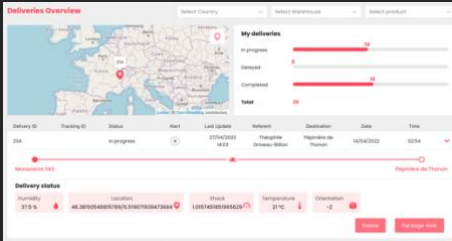


# Monoceros

## The only **smart** real-time **monitoring** solution

With Monoceros you **know** everything about your products,  
in real-time, wherever it is, whoever is in charge.



### Where is my package?

Delivery overview with all relevant data and statistics



### What is my package going through?

Historical and real-time package-level data.

### Is a problem impacting my package?





Real-time alerts to guarantee your products quality standards



**Monoceros SmartM is designed to be simple to use, requiring no human inputs to work for years on the field.**

### Quality

To guarantee the quality of your product you must measure it all and detect deviations in real-time.

-  Temperature
-  Humidity
-  Light
-  Accelerations





### Integrity

To guarantee the integrity of your products you must track their geolocation in real-time, everywhere.

-  Geolocation
-  Worldwide Connection
-  Multi-year battery
-  Package-opening

### Simplicity

To gain insights on your processes, you need precise and reliable data, without any human inputs.

-  Package-level view
-  Real-time alerts
-  Plug & play
-  Automatic reports

**SENSING-AS-A-SERVICE: THE TURN-KEY SOLUTION**  
Monthly subscription, all inclusive

# Monoceros

## Sensor Specifications

Dimensions L x W x H	73x66x[40, 20]mm
Weight	120g with the small battery
Casing	ASA
Protection Class	IP 65
Measured Parameters	Temperature, Humidity, Light, Accelerometer, GPS
Battery Type	Li-Soc12 (changeable)
Communication Interfaces	GSM / GPRS quad-band (worldwide)
User Interfaces	2 LEDs
Repeatable Use	10 years (depending on battery)
Geo-Location	GPS & GSM
Marking	CE
Compliance	RoHS, IATA DO160-G with Airplane mode, EN61010, EN12830
UN number / Packing Instruction	UN 3091 / PI 970

## Operating Conditions

Real-life Battery Autonomy	Small battery 7,7Ah (IATA compliant) – 1 year Medium battery – [1, 2] years Large Battery – +5 years
Temperature Range	[-40, +80] °C
Temperature Precision	±0.5°C
Temperature Long-term Stability	< ±0.05°C for five years
Humidity Range	[0, 100] %RH
Humidity Precision	±2.0 %RH
Humidity Long-term Stability	< ±1.2 %RH for five years
Accelerometer Range	±16g
Light Sensor Spectral Bandwidth	[440, 620] nm
Geo-location Precision	GPS: <20m range, GSM: >500m

## Additional features

External System Plug-In	REST API, Open-source plugins on demand
Access	API, Webapp, Mobileapp
Support	Onboarding training, continuous support
Alert Setting	Conditions limits, Delays, Geo-fencing, Theft
Alert Notifications	Webapp, email, API
Report	.CSV, .xlsx, .html, .pdf

Want to see it in action?

[Get in touch](#)