

BRL

Ingénierie



*Water & Environment:
Your challenges
become ours*

BRL

Ingénierie

Demonstrated innovative expertise in France and abroad

BRL Ingénierie (BRLI) means a broad spectrum of skills across the fields of water, the environment and land-use management.

We deliver our **know-how** in **France** and **abroad** on emblematic projects combining **technical** expertise and **innovation**:

- La Caserne Dam (restoring the sea around Mont-Saint-Michel - Awarded Best Engineering Firm);
- Reunion Island water transfer from the wet side to the dry side of the island (ADEME award for local area climate change adaptation);
- The Prado Reef Programme in Marseille, the largest artificial reef project in Europe (Awarded best ecological engineering by the French Ministry of Ecology);
- Environmental and regulatory studies for offshore windfarm projects: "Ile d'Yeu-Noirmoutier" and "Dieppe-Le Tréport";
- Expert appraisal and Hydraulic study of Hedong - Mianyang Sponge City - China;
- Master plan for the development of the Senegal River with a climate investment plan;
- Development of a strategy for adaptation to climate change and an action plan for the Ardèche watershed;
- National Master Plan for the Reuse of Treated Wastewater in Tunisia;
- Master plan for the supply of drinking water to the City of Pointe Noire in a context of climate change;
- Tel Aviv, design of a wave attenuation device using sand-filled containers to ensure the soft protection of the coastline.

Our speciality :

Complex water
infrastructure in
sensitive environments

Responsive multi-discipline consultants championing the challenges of the 21st century

With such great challenges as **adaptation to climate change**, **food security**, **population growth** and **ecology and energy transition** hovering over our heads, it is urgent to take action.

Our hive of expertise makes it possible **to build the best possible teams rapidly** (hydraulics and civil engineers, environmentalists, agronomists, sociologists, legal experts and economists) **to help you see your projects** through with care for natural habitats, livelihoods and living standards.

€24M

Sales turnover
50% international projects

200 engineers with
extensive international
experience and high level
technicians



The strength of a Group that remains human in scale distilling local and community values for 60 years

- **BRLI** is the consulting firm of the **BRL Group** (6 companies, 800 employees). BRL designed, built and operates a large-scale water distribution system under a concession granted by the Occitanie / Pyrénées-Méditerranée Regional Council (South of France). The system includes canals, dams, pumping stations and water treatment plants. It supplies 1 million people with water in summer and some 120 000 ha with irrigation water.



© Claude Corbier.
P. Lamour pumping station and canal

- Our experts build sustainable solutions to provide water during droughts and to handle floods.
- Unique know-how for a holistic approach: design, asset management assistance and operation of large-scale water projects.



© Bruno Destael
Monts d'Orb dam

Innovation and R&D

- **High-capability digital tools**
 - Numerical models and geomatics tools
 - High Performace Calculation clusters for complex digital simulations
 - Water management software derived from BRL's experience as operator
- **Innovative skills**
 - Integration capacity (technical and environmental studies)
 - Life cycle control
 - Support to the creation of Public-Private Partnerships for large irrigation schemes
- **Developing services and tools**
 - WIMES : Water Information Management Ecosystem and Services: development of software platforms for environmental monitoring, waterworks management and early warning systems

Our values:

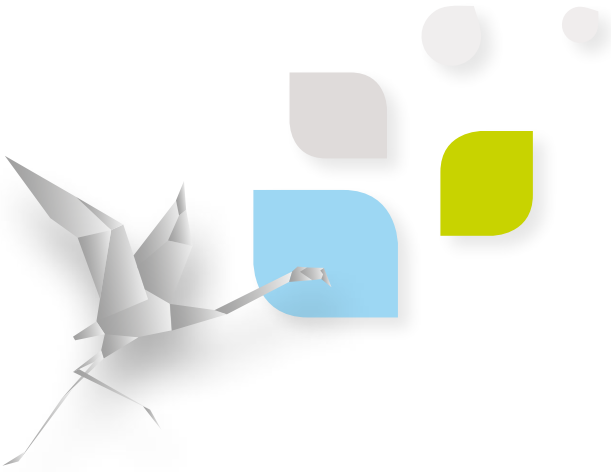
- Ethics and engagement to public interest (solidarity and responsibility)
- Delivery on all our commitments
- Innovation for a sustainable world

BRLI is a member of these R&D clusters



FRANCE
Water Team





By your side during the whole project cycle

- **Project organisation**
Project finance organisation, Design-Build-Operate,
Public-Private Partnerships
- **Studies and design**
Technical, economic, environmental and regulatory studies,
land-use planning
- **Design, Procurement, Construction Engineering
& Management**
Design and construction supervision
- **Support to the management and operation of water works**
- **Technical assistance services**
- **Asset management assistance services**
- **Training**
- **Institutional consultancy**
Environment, water management...

Areas of activity



Drinking Water Supply & Sanitation

- Production, supply and distribution of drinking water
- Collection, regulation, and conveyance of waste water
- Stormwater management
- Water and waste water treatment
- Energy efficiency and energy from waste
- Regulation and Services management

Water Works & Transfer Systems

- Dams, pumping stations, transfer systems
- Tunnels and trenchless works
- Dam & dike safety
- Assistance with commissioning and with operation
- Hydropower



Environmental Assessment

- Eco-design and environmental feasibility
- Environmental and Social Impact Assessments
- Resettlement Action Plans
- Strategic Environmental Assessments of plans and programmes



© BRLI

Water for Agriculture & Food Security

- Design and modernization of irrigation schemes
- Agricultural development: agroecology, climate-smart agriculture, value chain structuring
- Commercial agriculture and advice to private investors
- Irrigation scheme management, PPP, Organisation of water users

Biodiversity Management & Sustainable Development

- Biodiversity conservation strategy
- Participative management of natural resources
- Development of management plans for protected areas
- Ecosystem services and sustainable financing



© BRLI - VF



© BRLI / JB

Sea & Coastal Zones

- Integrated Coastal Zone Management
- Erosion and sea floods
- Marine Protected Areas
- Fisheries and fish farming
- Offshore activities and oceanography
- Coastal ecological engineering

Areas of activity

Areas of activity

Navigation & Ports

- Yachting and fishing harbours, trading ports
- Port protection works
- Inland waterway navigation dams
- Small and large capacity locks
- Creation, rehabilitation and modernization of navigation routes
- Dredging / Sediment management



Water & Risk

- Diagnosis and assessment of flood and submersion risk
- Risk prevention strategy
- Flood defence
- Risk management, surveillance, forecasting and early warning systems



Integrated Water Resource Management

- Quantitative and qualitative management
- Protection of aquatic habitat, environmental flow
- Transboundary river basin management
- Water Information Systems
- Strategic planning
- Institutional studies



Regional & Local Development

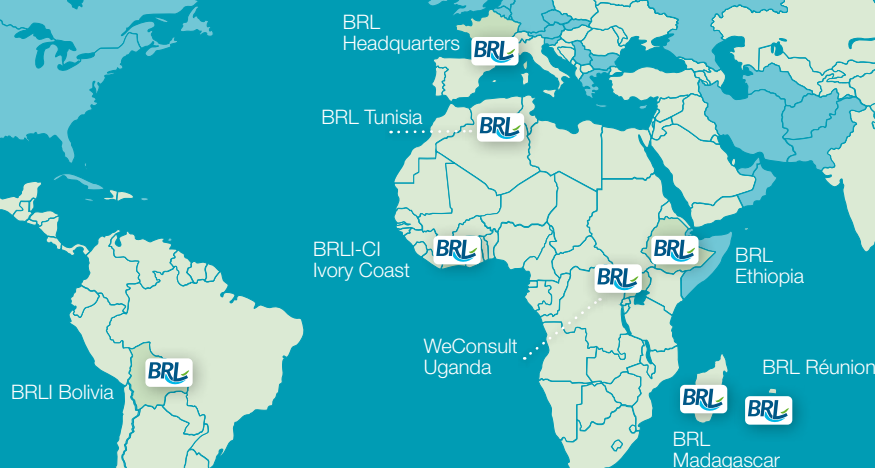
- Local development
- Rural development
- Land-use management plans
- Public development programmes and policies



BRL Ingénierie

On the globe

 BRL Ingénierie experience
 Permanent offices



Contacts :

Business Development Division
BRLI headquarters - France: dc.brli@brl.fr
Madagascar: brlmad@moov.mg
Côte d'Ivoire: brlici@brl.ci
Ethiopia: brlethiopia@brl.fr
Reunion Island: brli.reunion@gmail.com
Uganda: uganda@we-consult.info

BRL

Ingénierie

1105, avenue Pierre Mendès France
BP 94001 - 30 001 Nîmes Cedex 5 (FRANCE)

Tél. +33 (0)4 66 87 81 11
Fax : +33 (0)4 66 87 51 09

Partnerships with



www.brl.fr/brli

French Limited company (S.A.), capital 3,183,349 Euros
SIRET business & trade registration: 391 484 862 000 19
RCS : NIMES B 391 484 862
EU VAT No. FR 35 391 484 862 000 19