



WITH YOU TO REALISE
YOUR PROJECTS

Industrial piping – buried pipelines

DESIGN - FABRICATION - ASSEMBLY

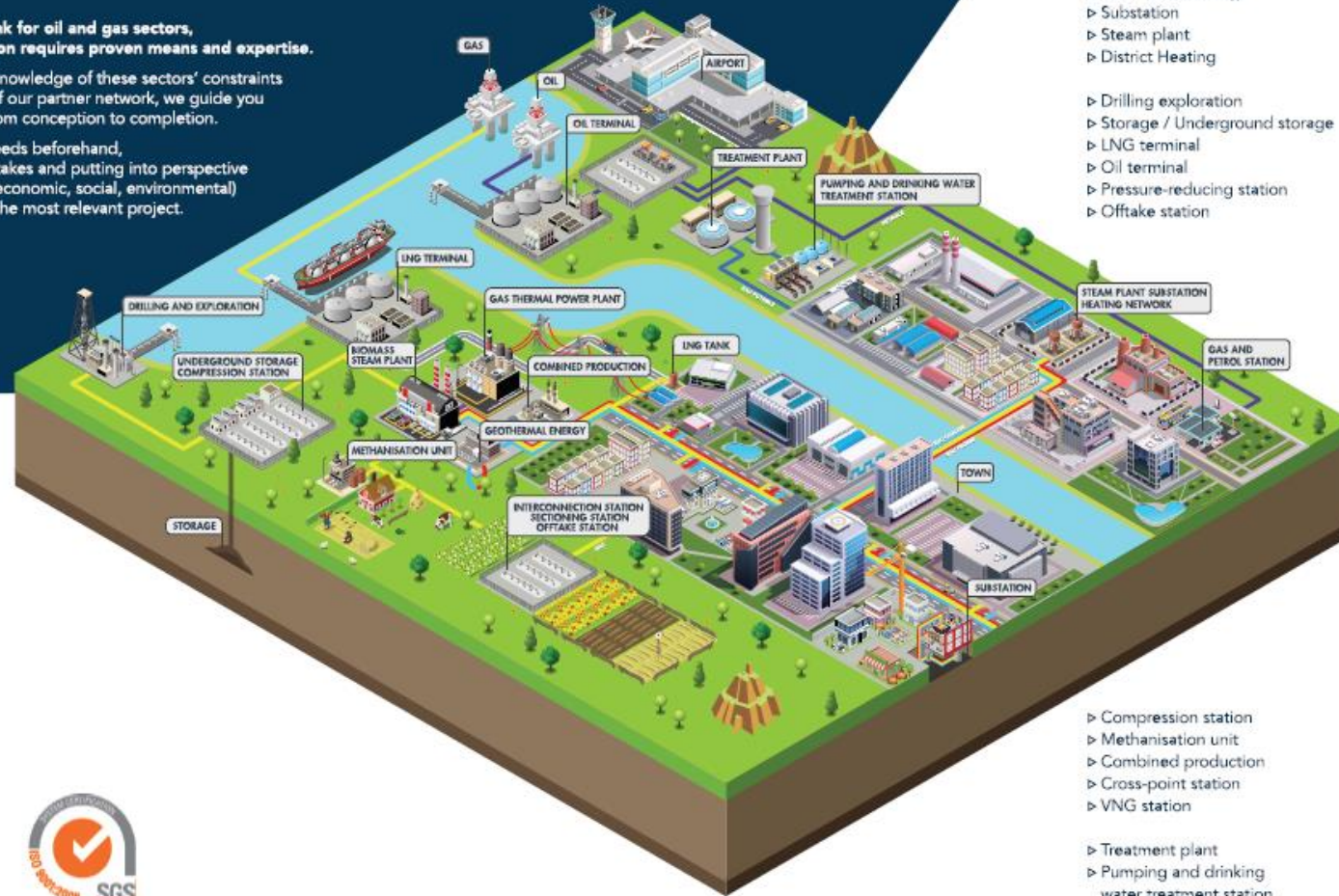


YOUR SPECIALIST FOR FLUID TRANSPORTATION

As an essential link for oil and gas sectors,
fluid transportation requires proven means and expertise.

With our precise knowledge of these sectors' constraints
and the support of our partner network, we guide you
in your projects from conception to completion.

We define your needs beforehand,
integrating your stakes and putting into perspective
all opportunities (economic, social, environmental)
to build with you the most relevant project.



SCOPE OF APPLICATION

- ▷ Biomass steam plant
- ▷ Gas thermal power plant
- ▷ Geothermal energy
- ▷ Substation
- ▷ Steam plant
- ▷ District Heating

- ▷ Drilling exploration
- ▷ Storage / Underground storage
- ▷ LNG terminal
- ▷ Oil terminal
- ▷ Pressure-reducing station
- ▷ Offtake station

- ▷ Compression station
- ▷ Methanisation unit
- ▷ Combined production
- ▷ Cross-point station
- ▷ VNG station

- ▷ Treatment plant
- ▷ Pumping and drinking
water treatment station



INDUSTRIAL PIPING PREFABRICATION AND ONSITE INSTALLATION

We can fully manage your pipework projects. We fabricate and install complete sets and units in accordance with your specifications, agreed period and the applicable standards.

ACTIVITIES

- ▷ Conception and detailed study
- ▷ Design and dimensioning of work
- ▷ Welding / Assembly
- ▷ Regulatory file

PRODUCTS

- ▷ Skid
- ▷ Cutting / pressure-reducing / sectioning stations
- ▷ Metering

USUAL FLUIDS

- ▷ Natural gas, oil, hydrocarbons, specific gas, water

INDUSTRIAL WORK REHABILITATION

ACTIVITIES

- ▷ Rehabilitation of aerial pipes: technical subgutter, corbelled structure under bridges or under steel sheath
- ▷ Sleeve integration on existing pipeline

SERVICES

- ▷ Works management
- ▷ Coating
- ▷ Hydraulic testing
- ▷ Cold cutting
- ▷ Surface treatment
- ▷ Welding
- ▷ Demagnetisation

USUAL FLUIDS

- ▷ Natural gas, oil, specific gas, water

STEEL OR POLYETHYLENE PIPEWORK SEGMENTS PRODUCTION

ACTIVITIES

- ▷ TIG welding, TIG + basics, rutile, cellulosic + basics, cellulosic
- ▷ Plastic fusion welding on polyethylene pipework
- ▷ Management of Codes of construction

SERVICES

- ▷ Steel/ polyethylene provision
- ▷ Welding
- ▷ Bending
- ▷ Hydraulic testing
- ▷ Coating
- ▷ Clamping
- ▷ Drying

USUAL FLUIDS

- ▷ Natural gas, specific gas, water, hydrocarbons

INDUSTRIAL MAINTENANCE AND SERVICES

ACTIVITIES

- ▷ Return to service of installations
- ▷ Network inerting
- ▷ Feasibility study
- ▷ Demagnetisation of pipes
- ▷ Network drying
- ▷ Welding
- ▷ Demagnetisation
- ▷ Renting
- ▷ Coating
- ▷ Cold cutting
- ▷ Testing
- ▷ Bending

PRODUCTION OF ONSITE TURNKEY INSTALLATIONS

- ▷ Civil engineering
- ▷ Pipework study
- ▷ Grading
- ▷ Surface treatment
- ▷ Electricity
- ▷ Instrumentation



OXYGEN SECTIONING STATION



PRESSURE-REDUCING STATION



PIPE DEVIATION



SKID



ONSITE ASSEMBLY



PUBLIC DISTRIBUTION



RAMP



INDUSTRIAL PIPING PREFABRICATION AND ONSITE INSTALLATION



USUAL FLUIDS

Natural gas, oil, hydrocarbons, specific gas, water.

STANDARDS

ASME Welding specifications /
NF EN ISO 15614-1 > process 111, 141

ASME Welding specifications /
NF EN ISO 9606-1 : 2013 > process 141, 111

CODAP : Code for Construction of Unfired Pressure Vessel
CODETI : Code for Construction of Penstocks

FULL MANAGEMENT OF YOUR PROJECTS

ACTIVITIES

We fabricate and install complete sets and units in accordance with your specifications, agreed period and the applicable standards.

SERVICES

- ▷ Conception and detailed study
- ▷ Design and dimensioning of work
- ▷ Welding / Assembly
- ▷ Regulatory file



Piping plan

Steam plant

Biomethane / biogas

Industrial site

TURNKEY SOLUTIONS
FOR ONSITE
INSTALLATIONS

- ▷ Grading – Civil engineering – Piping study
- ▷ Surface treatment
- ▷ Electricity and instrumentation

SPECIFIC MEANS

- ▷ A prefabrication workshop to produce complete units.

▷ PQR, WPQ,
to produce units of any diameter and thickness,
carbon steel and stainless steel.



R17 Communication - 02 40 85 78 74 - 16/08/2017 - Crédits photos : Artis Groupe

USUAL REALISATIONS

SKID



CUTTING STATION



PRESSURE-REDUCING STATION



SECTIONING STATION



METERING



AN EFFICIENT PRODUCTION PLANT

- ▷ 1200 m² Prefabrication workshop
- ▷ 10 000 m² stockyard
- ▷ Equipped vehicles
- ▷ Welding machines and compressors
- ▷ Pipeline cold cutting clamps
- ▷ Wrenches and hydraulic pumps for torque clamping
- ▷ Coating measurement devices
- ▷ Explosive gas detectors, catharometers for methane
- ▷ Aligner clamps
- ▷ Cutting and bevelling machines
- ▷ Bending machines



STANDARDS & QUALIFICATIONS

The expertise of our project managers and technicians guarantees our quality of service, confirmed by our certifications and the most demanding specific approvals. The welding specifications (PQR/WPQ) are updated and completed on a regular basis.

- ▷ ASME Welding specifications
NF EN ISO 15614-1 (process 111, 141)
- ▷ ASME Welding specifications
NF EN ISO 9606-1 : 2013 (process 141, 111)

EXPERIENCE AT THE SERVICE OF INDUSTRIES

Investing in competencies, software and technologic tools development, ARTIS has quickly become a major subcontractor of the oil&gas sector in France and neighbouring countries. Created in 2007 by Arnaud Josse and Fabrice Chailloux, the company can rely on the strong experience of its founders and qualified teams. As two former employees of GRT Gaz, they understand the issues linked with the needs on industrial sites and pipeline networks.



Fabrice CHAILLOUX
Technical Director
Co-company Manager



Arnaud JOSSE
Sales Director
Co-company Manager



QUALITY, HEALTH, SAFETY & RESPECT FOR ENVIRONMENT

QHSE management being our priority, we are committed to ensuring quality work in a secure environment for all our employees, clients and subcontractors. We make every effort to reduce the impact of our activities on the environment by complying with national and international standards.

THEY TRUST US





www.artis-groupe.fr

Parc d'Activités des Estuaires - Espace du Mortier - 309 Avenue Lavoisier - 44590 DERVAL

T. 02 40 07 81 17 - F. 02 40 28 54 36