

OUR PRODUCING RANGE

PRODUCTS, TRADING, SPECIAL FITTINGS

PRODUCTS	MAXI DIAMETER	MAXI TCHICKNESS	STANDARDS
Reducers	1620 mm	20 mm	ISO/ METRIC EN 10253-4 ISO 5251 ANSI B 16.9 DIN 2616
Pulled tees	273.1 mm	3 mm	ISO/ METRIC EN 10253-4 ISO 5251
Fabricated tees with branch	914 mm	10 mm	ISO/ METRIC ISO 5251
Caps	1016 mm	10 mm	ISO NAF 49185
Caps	1016 mm (40")	35 mm	ANSI B 16.9-B16.25 EN 10253-4
Pressed collars	1016 mm	8 mm	METRIC ISO : NF EN 1092-1. Type 33&37 NF EN 2951. Type 35
Stub ends	1219 mm (48")	12.7 mm	ANSI B 16.9 MSS SP43
Pressed flanges	219.1 mm	8 mm	EN 1092-1 DIN 2642

+ TRADING FITTINGS

PRODUCTS	MAXI DIAMETER	MAXI THICKNESS
Elbows	24"	10 mm
Tees	24"	10 mm

+ SPECIAL FITTINGS

AND CUSTOM FABRICATION

Grades : Austenitics, ferritic-austenitic, super asutenitic, nickel alloys

Fell free to contact us to make your requirements come true. Skilled workers and production facilities allow us to fit your needs.



+ TESTINGS

NON DESTRUCTIVE TESTING


- + Liquid penetrant testing according ISO 23277 & ASME VIII DIV A APPX 8
- + X-RAY according ASME VIII DIV1 & ASME V art 2 et 22
- + PMI
- + Spectrometry

DESTRUCTIVE TESTING

(ACCORDING EN & ASME STANDARD)

- + Hardness (portable or micro-hardness) HB, HRC
- + Tensile test (prismatic, cylindrical)
- + Bending test
- + Ferrite control
- + Corrosion (Intergranular, weight loss, micrography on corrosion)
- + Impact test
- + Macrography
- + Micrography

+ QUALIFICATIONS

- + 1 IWT/EAPS : FR IWT 01297
- + 2 COFREND 2 PT & 1 COFREND 1 PT according ISO 9712
- + 2 internal auditor : ISO 19011
- + WPQ / QS : ASME IX & EN 287-1 et 9606-1
Stainless steel, refractory, duplex, super duplex, from 2 to 20 mm
- + PQR / QMOS : ASME IX & EN 15614
Stainless steel, refractory, duplex, super duplex, nickel alloy, (copper-nickel) from 2 to 24 mm
- + ISO 9001 : 2015 
- + DESP 2014/68/UE
ISO 3834-2 in progress



RTI INDUSTRIES

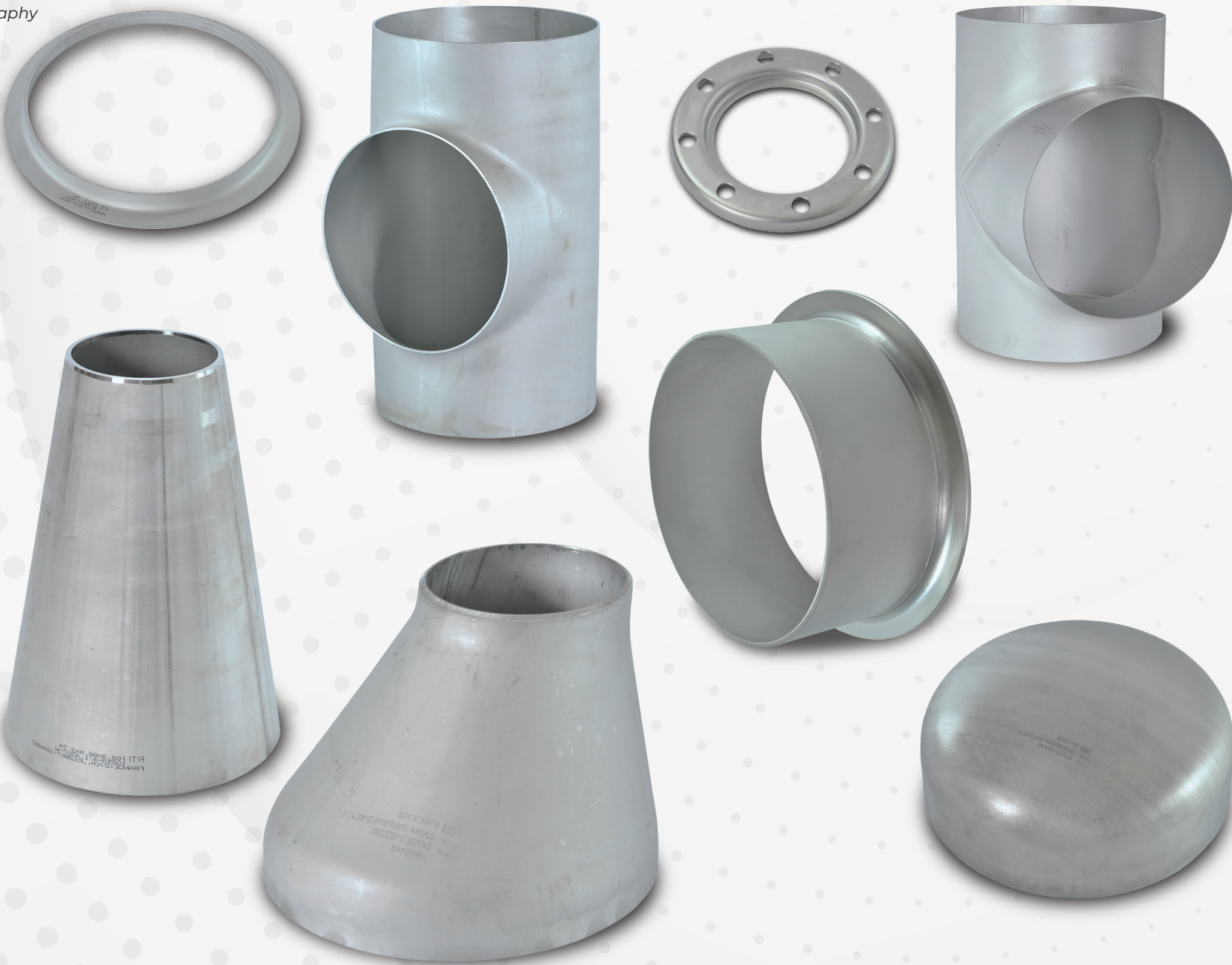
22, route du Crêton
Zone d'activité
F-18110 VASSELAY
FRANCE

Tel. : +33(0)248 697 420
Fax : +33(0)248 697 428
Web : www.rti-industries.com
sales@rti-industries.com



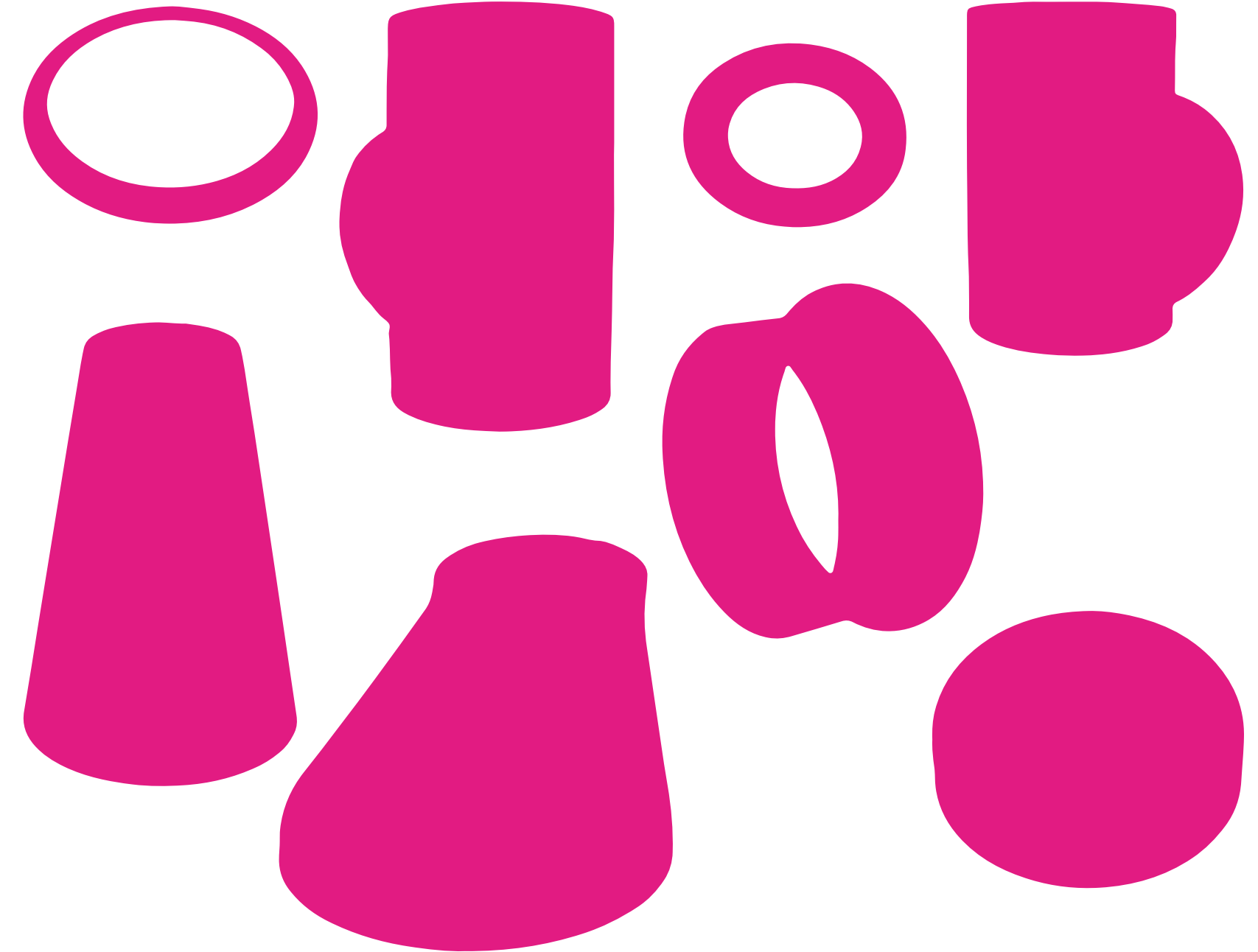
FITTING

YOUR NEEDS





FITTING
YOUR NEEDS



KNOW-HOW AND FLEXIBILITY AT YOUR SERVICE

+ The service company

Since 1984, we manufactured butt weld stainless steel fittings such as reducers, caps, tees, collard and stub ends.

As quality and flexibility are at the heart of our strategy, about 50 skilled people are involved in customer's satisfaction and guarantee of short production times.

Thanks to our know-how, we can produce special pieces and include your specific needs in our production steps.

We are you business partner.

APPLICATIONS OUR SCOPE OF INTERVENTION



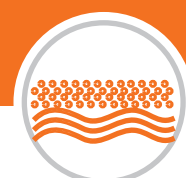
Chemical industry



Oil and gas



Food industries



Desalinisation



Paper mill



Power

+ Our customers

Stockholders and worldwide traders.



OUR STRENGTHS OUR SKILLS

+ Reactivity

A strong technical sales team at your disposal to fit your needs

A diversified staff of technicians (including qualified welders) focused on commitments compliance.

+ 3 production workshops

- + **Forming workshop:** with hydraulic presses up to 400T.
- + **Sheet metal workshop:** with welding stations and qualified procedures
- + **Machining workshop:** with horizontal lathes

+ A warehouse dedicated to reducers, collars, stub-ends, caps and tees :

- + More than **10 000 references**
- + More than **300 000 available products**
- + From **austenitic** and austeno-ferritic stainless steel to super austenitic (nickel basis on request)
- + **Dedicated stock** on request



An efficient shipment staff:
Order preparation within 12 hours from order receipt