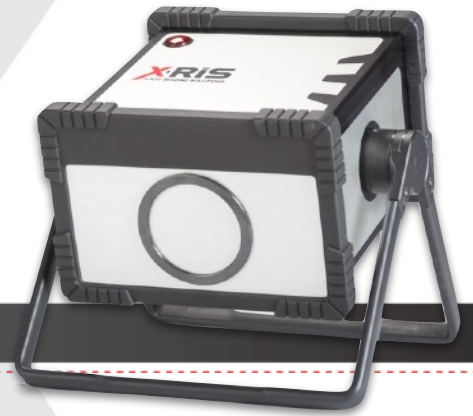
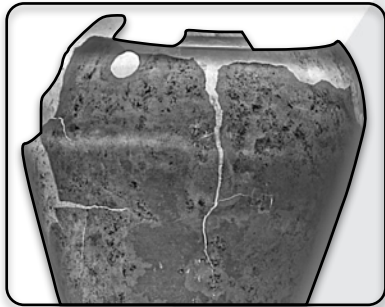


Portable **constant potential** x-ray generators optimized for **Digital Radiography** with focal spot down to **200 μm** !



APPLICATIONS

- ▶ Aeronautic
- ▶ Aerospace
- ▶ Historical assets
- ▶ Composite materials
- ▶ Windmills
- ▶ High voltage electric lines and pylons
- ▶ Shipyards
- ▶ Piping (in power, petrochemical or pharmaceutical plants)



KEY FEATURES

Portability

Lightweight unit. With embedded batteries, X-ray anything, anywhere at any time ! Powered from the mains or from batteries.

From 20 kV up to 200 kV

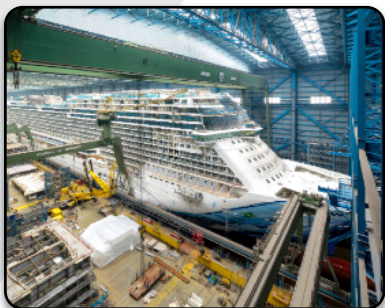
Large range of applications : X-ray anything from paper up to 1" (25.4 mm Fe) and higher according to your image quality expectation.

kV and mA real time adjustment

Change kV and mA during X-ray shot for quick and easy image adjustment!

Image quality

High image quality thanks to small focal spot down to 200 μm !



Spatial resolution improvement with geometrical enlargement. Now, you can X-ray objects at distance. **μ GemX** solves access problems.

No more geometrical distortion on curved objects ! Associated to a DDA, **μ GemX** is a Perfect tool for pipe inspection.

Smart accessories design

360° handle for easy X-ray beam direction adjustment.

X-RIS laser pointers and filters are easy to fix on your **GemX** thanks to magnets.



GemX SPECIFICATION

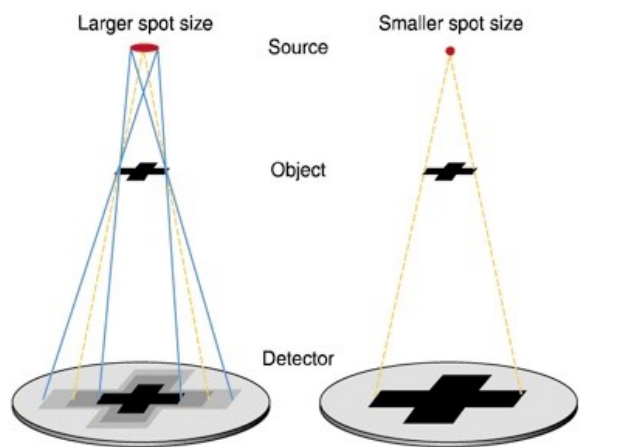


MODEL	POTENTIAL (kV)	CURRENT (mA)	POWER (W)	FOCAL SPOT SIZE (μm)	EXTERNAL DIMENSIONS (mm) without handle	WEIGHT (kg) batteries included
μGemX-150	50 to 150	0,1 to 2	150	200	287 x 282 x 193	16,3
GemX-150	20 to 150	0,1 to 2	150	500 * 700	287 x 282 x 193	16,3
GemX-160	50 to 160	0,1 to 2	160	500 * 700	287 x 282 x 193	16,3
GemX-200	50 to 200	0,1 to 2	200	500 * 700	314 x 358 x 226,5	25

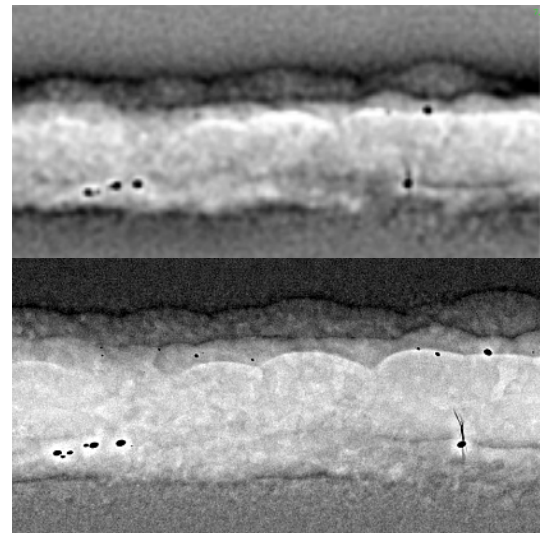
- ▶ Typical duty cycle at 20°C : 1/3
- ▶ Universal power supply : 26 to 54 Vdc
- ▶ Built-in LiPo batteries. Battery life time : 60 minutes X-ray at full power
- ▶ Insulation : oil
- ▶ Smart 360° handle for easy set-up
- ▶ Beam type : constant potential
- ▶ Beam angle: 45° x 45°
- ▶ Bluetooth (V 4.0) , up to 80m wireless control
- ▶ Wired ethernet communication
- ▶ CE and NFC 74100 compliant

Maestro SOFTWARE & IMAGE QUALITY IMPROVEMENT WITH μGemX

All user-friendly **Maestro** features included, **GemX** and **μGemX** monitoring.



Improvement thanks to **μGemX** magnification



GemX ACCESSORIES

- ▶ Laser centering device
- ▶ Lead cap for tube for safe warmups and seasonings
- ▶ Magnetic filters holder
- ▶ Tripod
- ▶ Flashing lights and buzzers available
- ▶ Cable reel with 40m ethernet cable
- ▶ Carrying case
- ▶ **Maestro** Control software



www.xriss.eu