

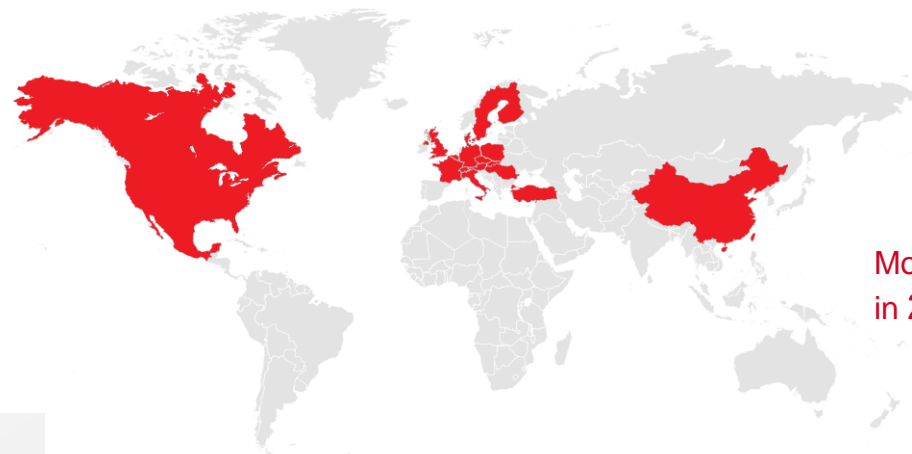


Bodycote

An introduction

At a glance

As the world's leading provider of classical heat treatments and specialist technologies, Bodycote provides its customers with value-adding services which improve their components.



Bodycote

More than **165 locations**
in **22 countries**

Our technologies



Classical Heat Treatments

A group of heat treatment processes used to improve the properties of metals and alloys, and metal joining technologies which are used to join and assemble parts.



Specialist Technologies

A group of highly differentiated and proprietary technologies which enable our customers to produce unique high value-adding products.

Our Markets

Aerospace and Defence



Automotive



General Industrial (including Energy)



Some of the biggest names in engineering use Bodycote:



SPACEX



Over **4,800** Engineers, scientists, technicians and support staff





Our technologies

Classical Heat Treatments



Classical Heat Treatment is the controlled heating and cooling process of metals in order to obtain the desired mechanical, chemical and metallurgical properties during the manufacturing of a product.

Classical heat treatments include but are not limited to:

Annealing

Carburising

Solution and age

Atmospheric carburising

Carbonitriding

Ion implantation

Stress relieving

Plasma nitriding

Nitrocarburising

Hardening

Quenching

Tempering

Gas nitriding



Our technologies

Specialist Technologies



Bodycote's Specialist Technologies refer to a group of highly differentiated processes which offer unique solutions for a variety of applications.

Hot Isostatic Pressing (HIP) Services

Improves component integrity and strength by application of extreme pressure and heat.

HIP Product Fabrication inc. Powdermet®

Additive manufacturing of often complex components in conjunction with HIP.

Surface Technology

Enhances component life using ceramic and metal coatings.

Specialty Stainless Steel Processes (S³P)

Improves the strength, hardness and wear resistance of stainless steels without affecting their corrosion resistance.

Low Pressure Carburising (LPC)

Provides a hardened surface and tough core in a 'clean' process under vacuum.

Corr-I-Dur® (CiD)

Improves corrosion resistance and wear properties, and is primarily used as an environmentally friendly substitute for hard chrome.

Customer-focused businesses – ADE & AGI



Aligning the way we do business with our customers

Bodycote has more than 40,000 customers serviced by more than 165 facilities around the world. These facilities are organised into two customer-focused businesses – ADE and AGI.

ADE: Aerospace, Defence & Energy



Our ADE business is globally organised, with relevant quality certifications, to reflect customer operations in these markets.

AGI: Automotive & General Industrial



Our AGI business includes many multinational, medium-sized and smaller companies, and is regionally and locally oriented to better serve this customer base.

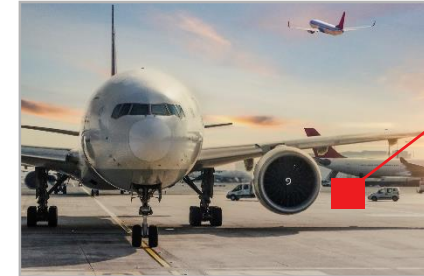
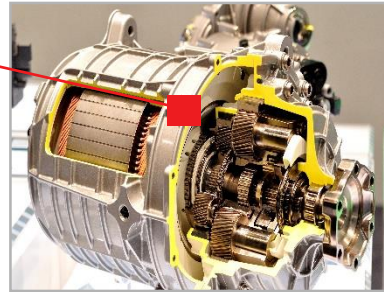
Why do we need Bodycote's services?



Virtually every type of metal component, whatever its application, has received some form of treatment to enable it to perform to the required standard and last longer once it's put into service.

In a world without Bodycote's services...

An automotive gearbox might last only a week



An aircraft engine would not last a single flight

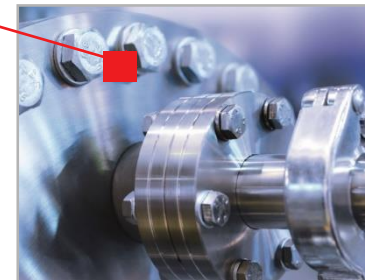


Marine applications would have a much shorter lifespan

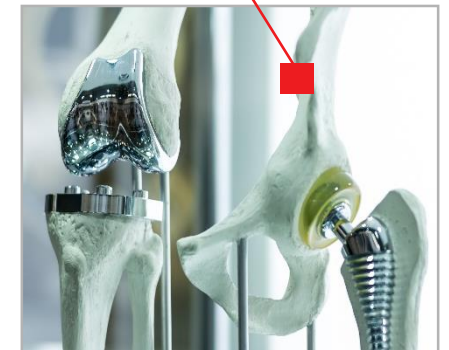


Surgical tools would not be fit for purpose

Fasteners would damage and corrode more quickly



Medical implants would not have the strength or corrosion resistance they need



Bodycote Component Journeys



Demonstrating the vital link in the supply chain



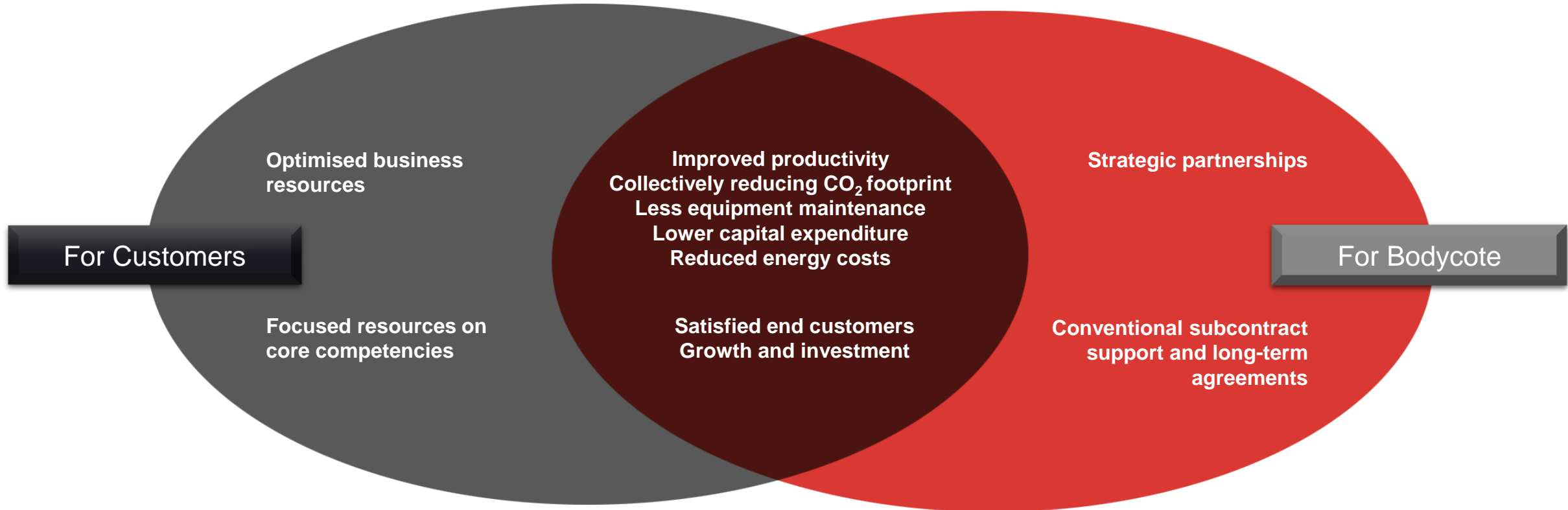
Bodycote created Component Journeys to demonstrate where and why our services are required during the manufacturing process, from raw material to end application.

The component journeys illustrate, in a simplified format, the vital link that Bodycote's services play in the creation of a wide range of components from safety critical aerospace parts to consumer products.

FOLLOW ME...

<https://www.bodycote.com/news-and-media/downloads/>

The proven value of partnerships



Core Values

Our internal compass



Honesty & Transparency

We cultivate a culture of transparency, where honesty and integrity are at the foundation of our business and our relationships.

Trust is at the heart of everything we do.



Respect & Responsibility

We behave individually and collectively with respect for each other, our stakeholders and the environment, conducting business responsibly, taking ownership of our actions.



Creating Value

We create value for our employees, customers and shareholders, and this is the very essence of Bodycote.

Environment, Health, Safety

Committed to continual improvement

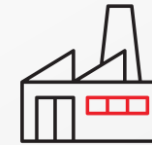


Environment

- A proactive approach to improve sustainability and energy efficiency.
- Bodycote has committed to the Science Based Targets Initiative (SBTi).
- Bodycote helps customers reduce their carbon footprint.
- Committed to reducing overall impact on the environment, through:
 - Use of modern energy-efficient equipment
 - Efficient furnace utilisation
 - Extension of component lifetimes, leading to reduction in waste, materials and energy
 - Introduction of environmentally-friendly alternatives to existing treatments

Safety & Health

- Bodycote takes a proactive approach to continually improving safety – a global incident reporting and EHS management tool is in use at every operational site.
- Ongoing investments to improve safety, especially in pedestrian safety and manual handling improvements to reduce accident frequency and risk.



99% of Bodycote facilities are accredited to ISO 14001



Total water consumption decreased by **8% in 2023**



A target of **28%** CO₂ emissions reduction by 2030
24% reduction since 2019

Bodycote's commitment to you



People

Bodycote is ideally positioned to **provide solutions for our customers** with the best metallurgists, engineers and technicians in the industry.



Service

A focus on **excelling at customer service** drives our business. Finding value-adding solutions and promoting mutual business development opportunities.



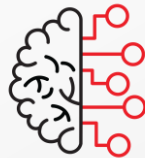
Quality

Our customers have invested in all the components we process. Our facilities hold **international and national accreditations and customer approvals**, providing assurance of top-tier quality.



Technology

Our scale enables our customers to **benefit from our investment** in the cutting-edge technologies and the most eco-friendly equipment.



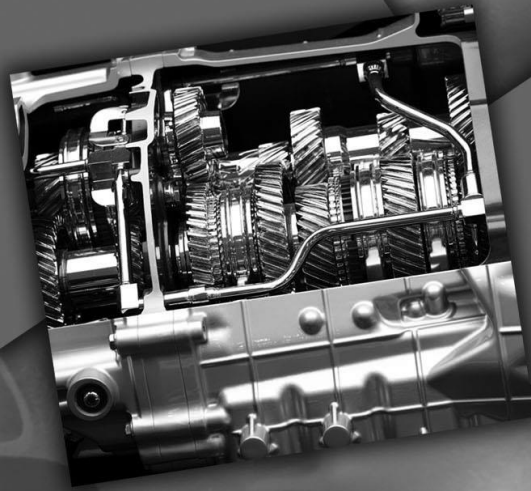
Expertise

Customers of any local Bodycote plant can **benefit from our knowledge**, skills and technology across the entire group's network.



Values

Honesty and Transparency, Respect and Responsibility, and Creating Value. These values represent Bodycote and its people, and our **commitment to our customers**.



Bodycote

Thank you