

HFA/HCA series



"Delivering power to factories around the world."



NEW HFA (Forced Air Cooling)



HCA (Conduction Cooling)

Model	HFA3500TF		HCA3500TF	
Output Voltage	48V	65V	48V	65V
Input Voltage	3Φ 180 - 528VAC (Derating is required at less than 200VAC.)			
Output Current	73A	54A	73A	54A
Output Power	3504W	3510W	3504W	3510W
Power Factor (200VAC / 400VAC, I _o =100%)	0.95 / 0.94			
Efficiency (200VAC / 400VAC, I _o =100%)	91% / 93%	92% / 94%	91% / 93%	92% / 94%
Leakage Current (480VAC, 60Hz, I _o =100%)	3mA max.			
Operating Ambient Temperature	-10 to +70°C (Ambient)		0 to +55°C (Base plate), -10 to +70°C (Ambient)	
Safety Standard Approvals	UL62368-1, C-UL (CAN/CSA-C22.2 No62368-1), and EN62368-1			
Conducted Noise	Complies with FCC Part15-A, FCC Part18-A, CISPR11-A, CISPR32-A, EN55011-A, EN55032-A and VCCI-A			
Size (W x H x D) mm (Excluding terminal blocks and screws.)	110 x 41 x 468 (4.33 x 1.61 x 18.43 inches)		110 x 65 x 420 mm (4.33 x 2.56 x 16.54 inches)	
Weight	3kg max.		5kg max.	

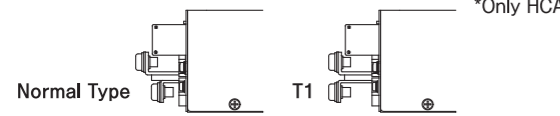
Option

R : Remote ONOFF. Reversed Logic.

G : Low Leakage Current

T1: Another Output Terminal Shape (No Step Type)

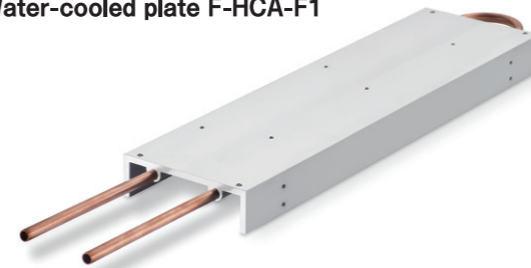
*Only HCA



I4: MOD BUS Communication

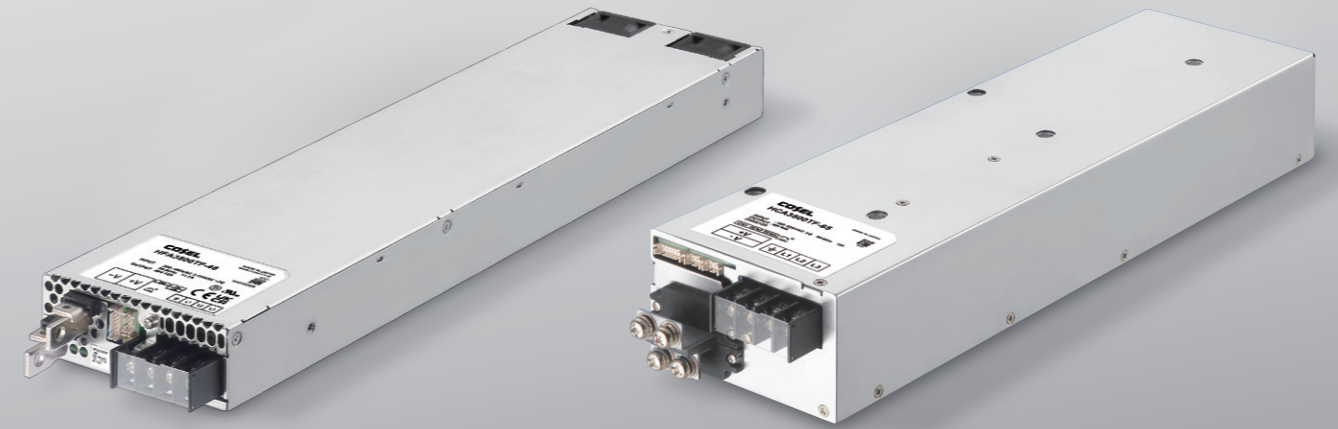
Option part of HCA series

Water-cooled plate F-HCA-F1



Universal 3-phase AC-DC Power Supply

Universal 3-phase input (Suitable for both Delta and Wye configurations)



HFA series **Forced Air Cooling**

HCA series **Conduction Cooling**

3500W

NEW

HFA/HCA series

Head Office **COSEL CO., LTD.**

1-6-43 Kamiakae-machi, Toyama 930-0816, Japan [Phone](tel:+81-76-432-8152) +81-76-432-8152 [E-mail](mailto:sales@cosel.co.jp) sales@cosel.co.jp [URL](https://en.cosel.co.jp) https://en.cosel.co.jp

Worldwide Sales/Support Network

(AMERICA)

COSEL U.S.A., INC.

[Phone](tel:+1-888-661-1705) (Free) +1-888-661-1705

[E-mail](mailto:sales@coselusa.com) sales@coselusa.com

[URL](https://www.coselusa.com) https://www.coselusa.com

《Engineering and Technical Support》

[Phone](tel:+1-888-661-1692) (Free) +1-888-661-1692

[E-mail](mailto:techsupport@coselusa.com) techsupport@coselusa.com

(EUROPE)

COSEL EUROPE GmbH

[Phone](tel:+49-69-95-00-79-0) +49-69-95 00 79-0

[E-mail](mailto:sales@coselurope.eu) sales@coselurope.eu

[URL](https://www.coselurope.eu) https://www.coselurope.eu

《Engineering and Technical Support》

[E-mail](mailto:techsupport@coselurope.eu) techsupport@coselurope.eu

(ASIA)

COSEL ASIA LTD.

[Phone](tel:+852-2305-2712) +852-2305-2712

[E-mail](mailto:sales@coselasia.com) sales@coselasia.com

[URL](https://www.coselasia.com) https://www.coselasia.com

COSEL (SHANGHAI) ELECTRONICS CO., LTD.

[Phone](tel:+86-21-6440-0381) +86-21-6440-0381

[E-mail](mailto:sales@coselasia.cn) sales@coselasia.cn

[URL](https://www.coselasia.cn) https://www.coselasia.cn



HFA/HCA series

Wide Input Range 3φ 200-480VAC
3500W Power Supply

Forced Air Cooling / Conduction Cooling

Available to choose between Forced Air Cooling Type and Conduction Cooling Type.

HFA series

Forced Air Cooling Type

Available to operate under Simple Heat Dissipation. The Forced Air Cooling Type is convenient for many users where it isn't installed in water-cooling conditions.

Low Profile

High Power Density

Simple Heat Dissipation

1U
41mm
(1.61 inches)

HCA series

Conduction Cooling Type

For applications in harsh environments. The conduction cooling can make the design for high environmental ruggedness simple. (The unit can be used with the water-cooled heat sink for laser module or the high-frequency amplifier.)

To withstand Harsh Environments

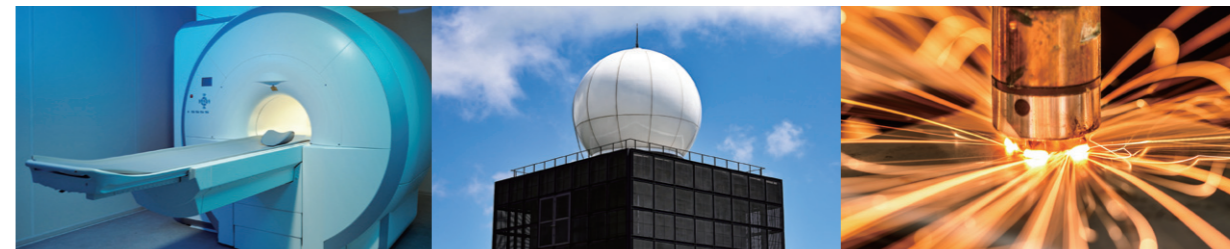
Improving the Derating Curve

Quiet

1.5U
65mm
(2.56 inches)

For High-power Applications

Such as MRI, Plasma processing and Laser



For Design of RF amplifier

48V 65V

HFA and HCA are available with a 65 or 48 VDC output. Useful with RF amplifiers used on MRI and Laser applications.

94% Maximum Efficiency

The high efficiency has been achieved with Wide bandgap Semiconductors (SiC).

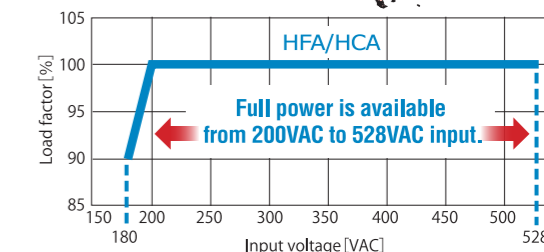
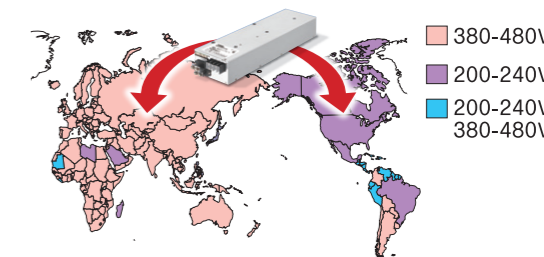
Universal Three phase Input

200VAC-480VAC

Available for any 3-phase input in the world

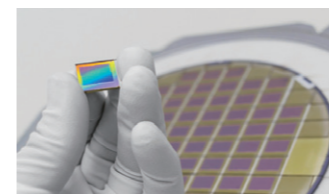
HFA and HCA can be used with both types of 3-phase input, Delta or WYE. So, the power supply can be communalized.

High efficiency has been achieved and the full power is available at 200VAC input by Water-cooled heat dissipation technology.



SEMI-F47

Complied with SEMI-F47. Suitable for the Semiconductor Processing Applications.



Parallel and Series Operation

Parallel 10 units max.

Series 400V max.*

Various combinations are possible that are suitable for many applications.

* Isolation between Output and FG is 2000VAC.

Target Applications

- Laser
- Plasma processing
- MRI
- Induction Heating system
- High-frequency amplifier