

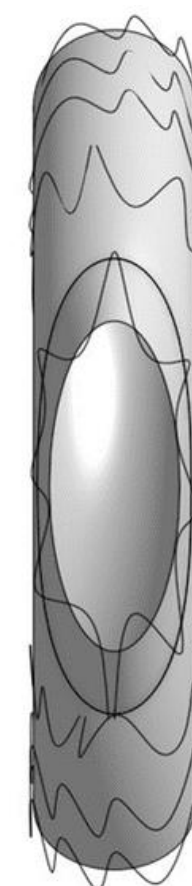
SMARTERY

Ascending aorta endoprosthesis

Dr Benoit COSSET

SATT Pulsalys

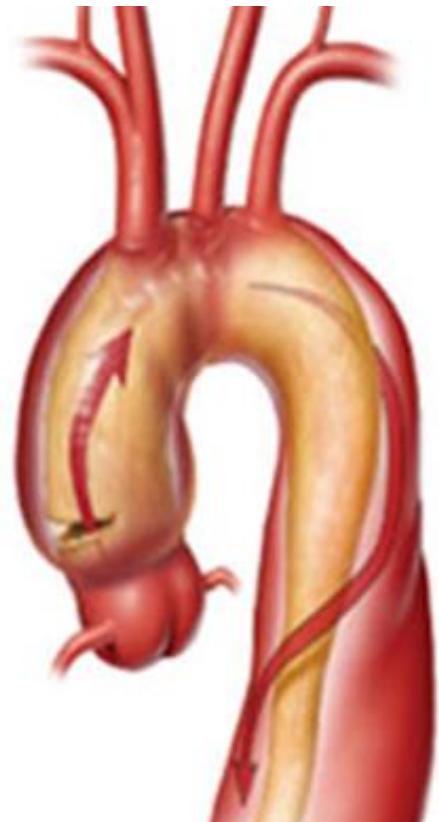
CREATIS Laboratory : CNRS UMR 5220 – INSERM U1206 – Université Lyon 1 – INSA Lyon



Ascending aorta pathologies: A therapeutic impasse



Aneurysm



Dissection

A diagram illustrating aortic arch replacement surgery. It shows the aortic arch being replaced with a synthetic graft. Surgical instruments and a heart-lung bypass machine are depicted, indicating a complex open-chest procedure.

25% Mortality

Medical: 1/3 patients

A photograph of a hand holding several pills over a glass of water, representing medical management.

60% Mortality

40% Overall Mortality

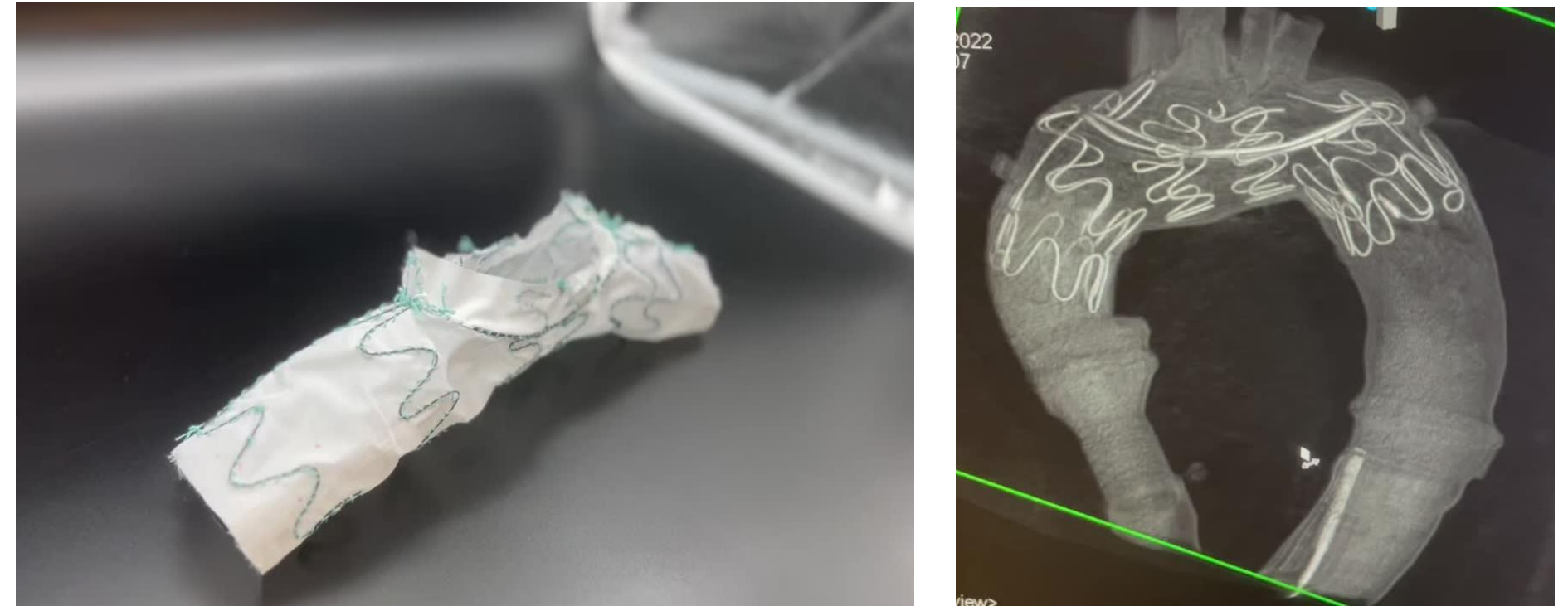
Our Solution:

A 100% endovascular endoprosthesis



Patent 2021

Proof of Concept 2022



Stented and fenestrated collar

Usage disruption

- Simple
- Off the shelf
- Secondary hospitals
- For all the patients

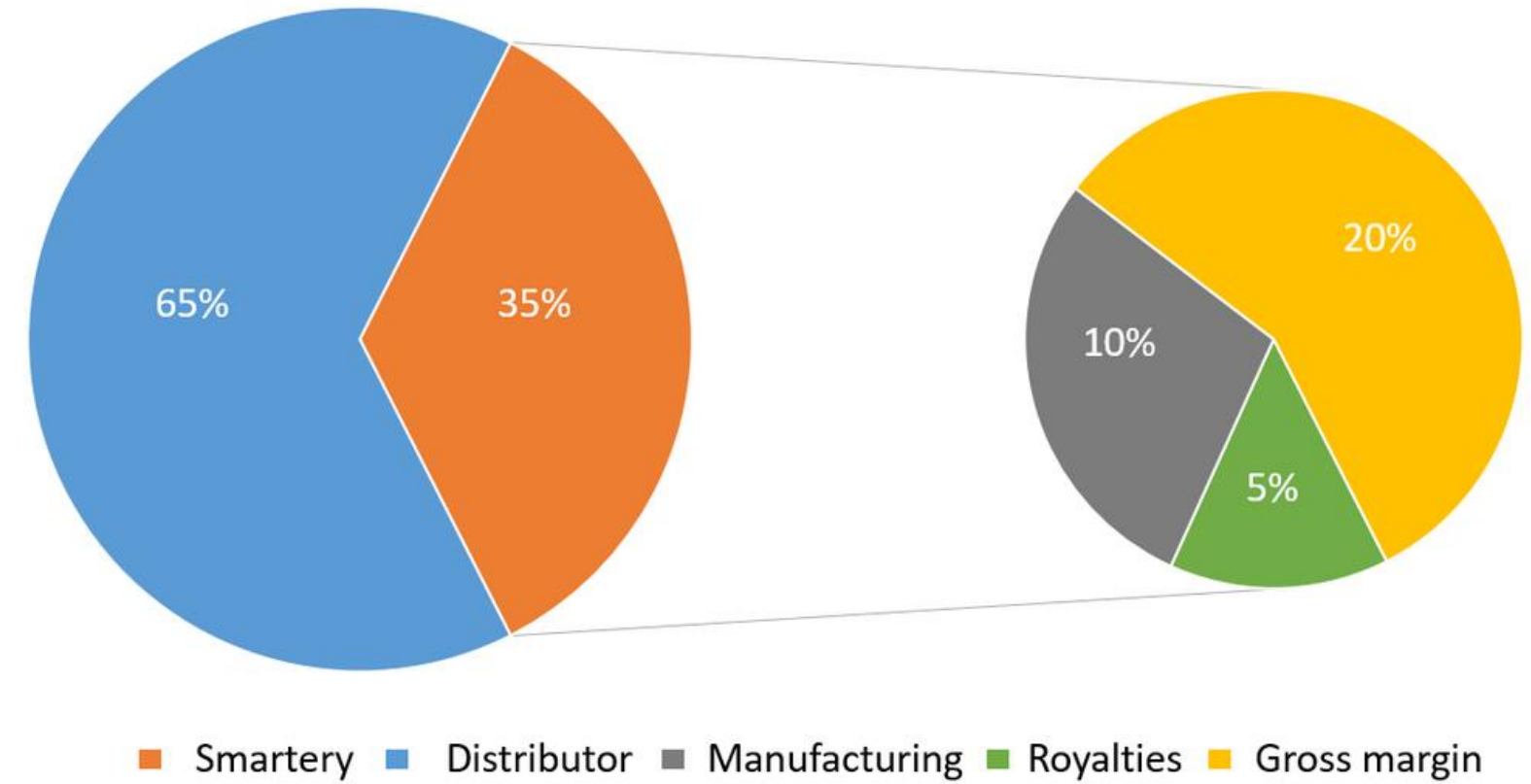
Societal impact

- Mortality: 40% --> 10%
- 60 000 patients / year
- Market: 2 Billions euros

Business model

Activities

- R&D
- Clinical studies
- Quality & Regulatory



Contract manufacturing

**Commercialization:
Distribution licensing**

Device

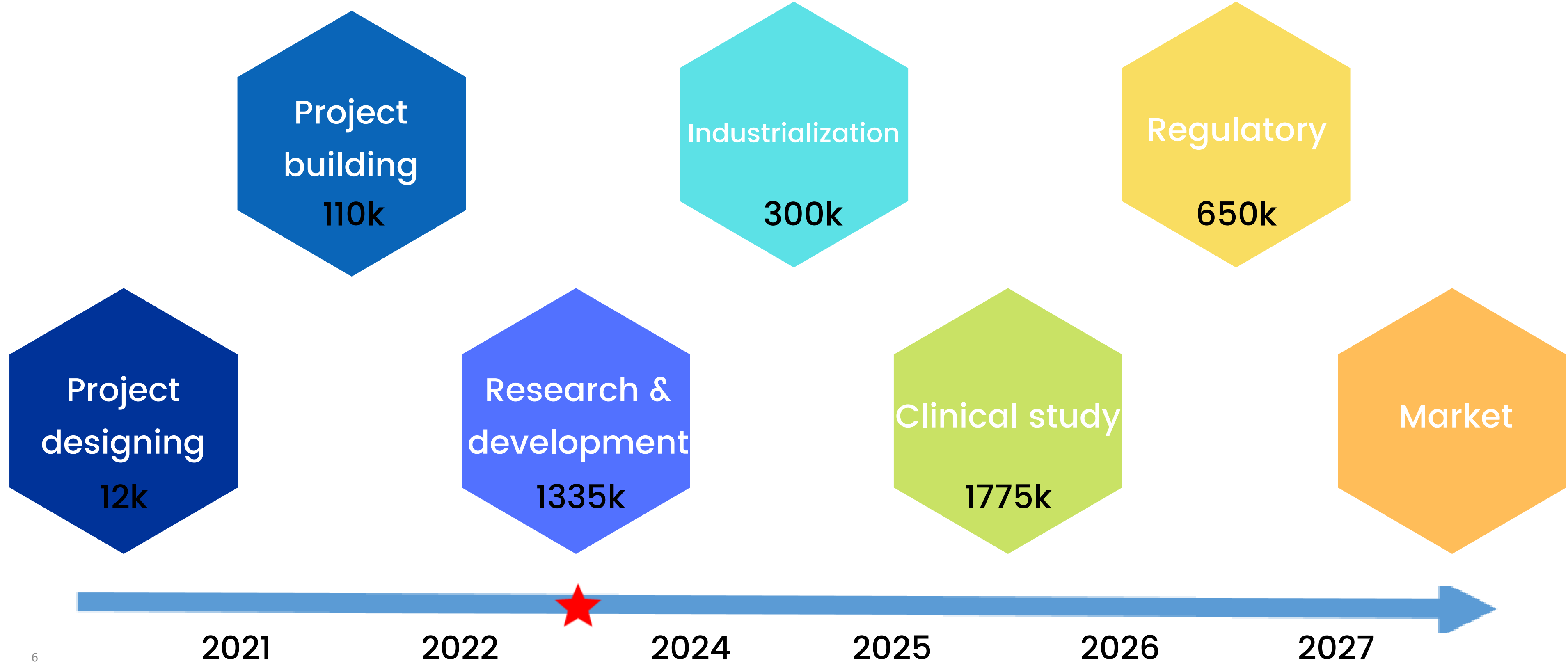
Production cost: 3 000k

Selling Price: 30 000k

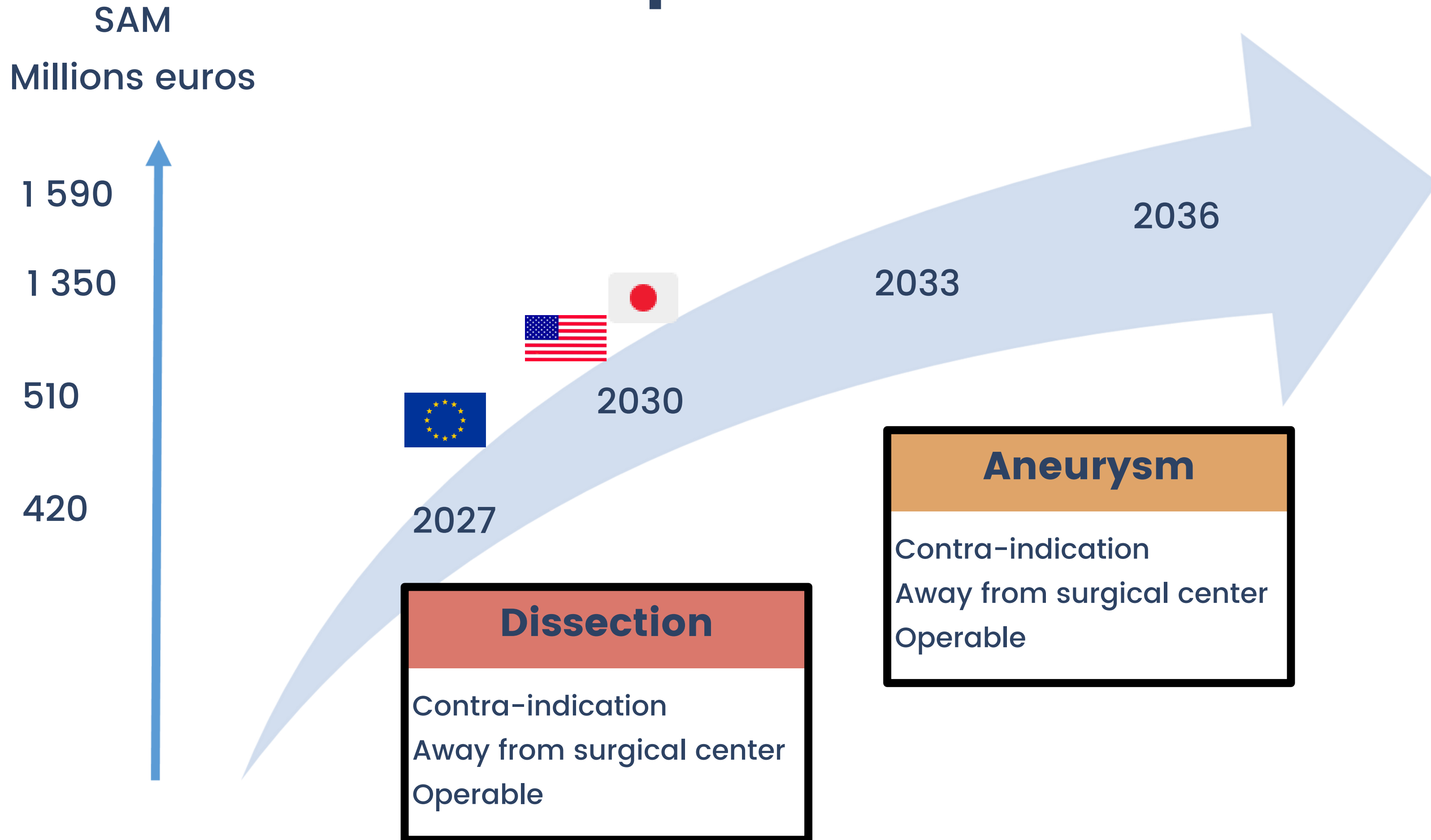
Concurrency

	Nexus	COOK TRIPLE BRANCHE	BOLTON DOUBLE BRANCHE	NATUJA	SMARTERY
					
Dissection	✓				✓
Aneurysm	✓	✓	✓	✓	✓
No surgery				✓	✓
Easy implantation No Stroke				✓	✓
CE Mark	✓	✓	✓		
Industrial big player					

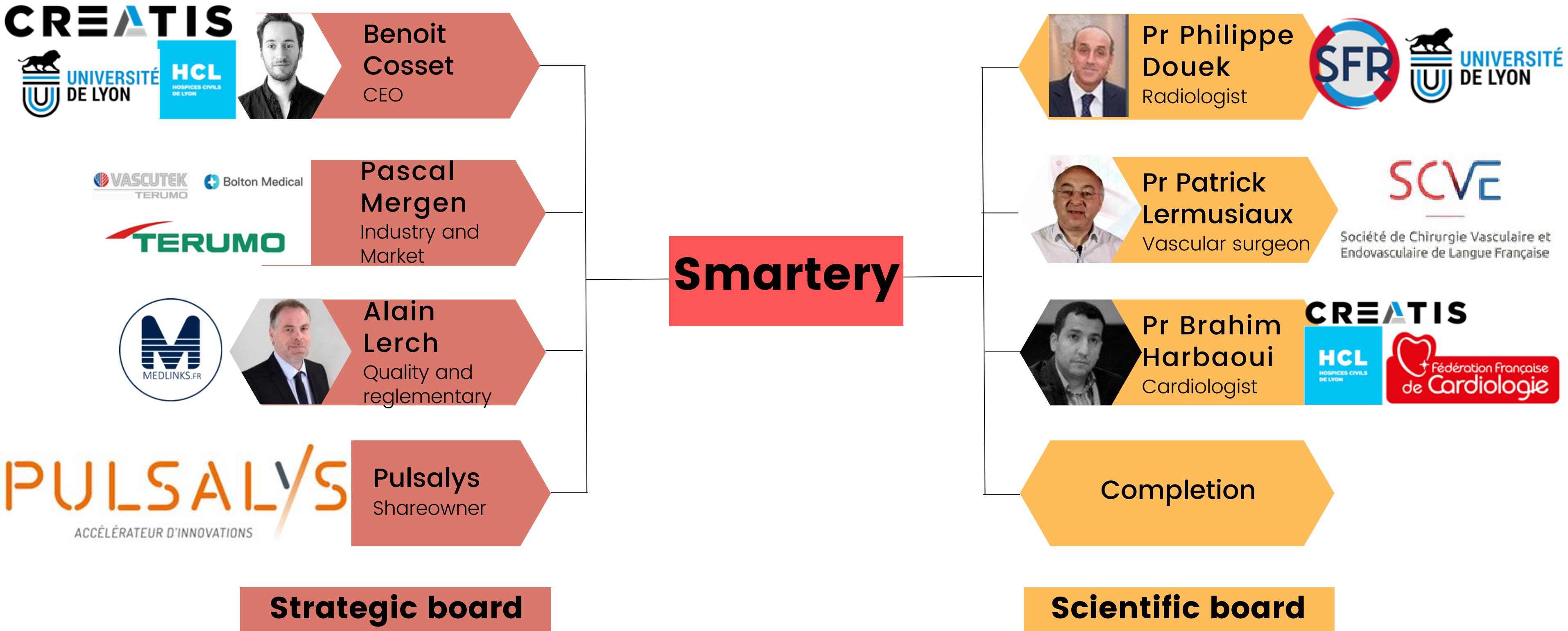
Technical Roadmap



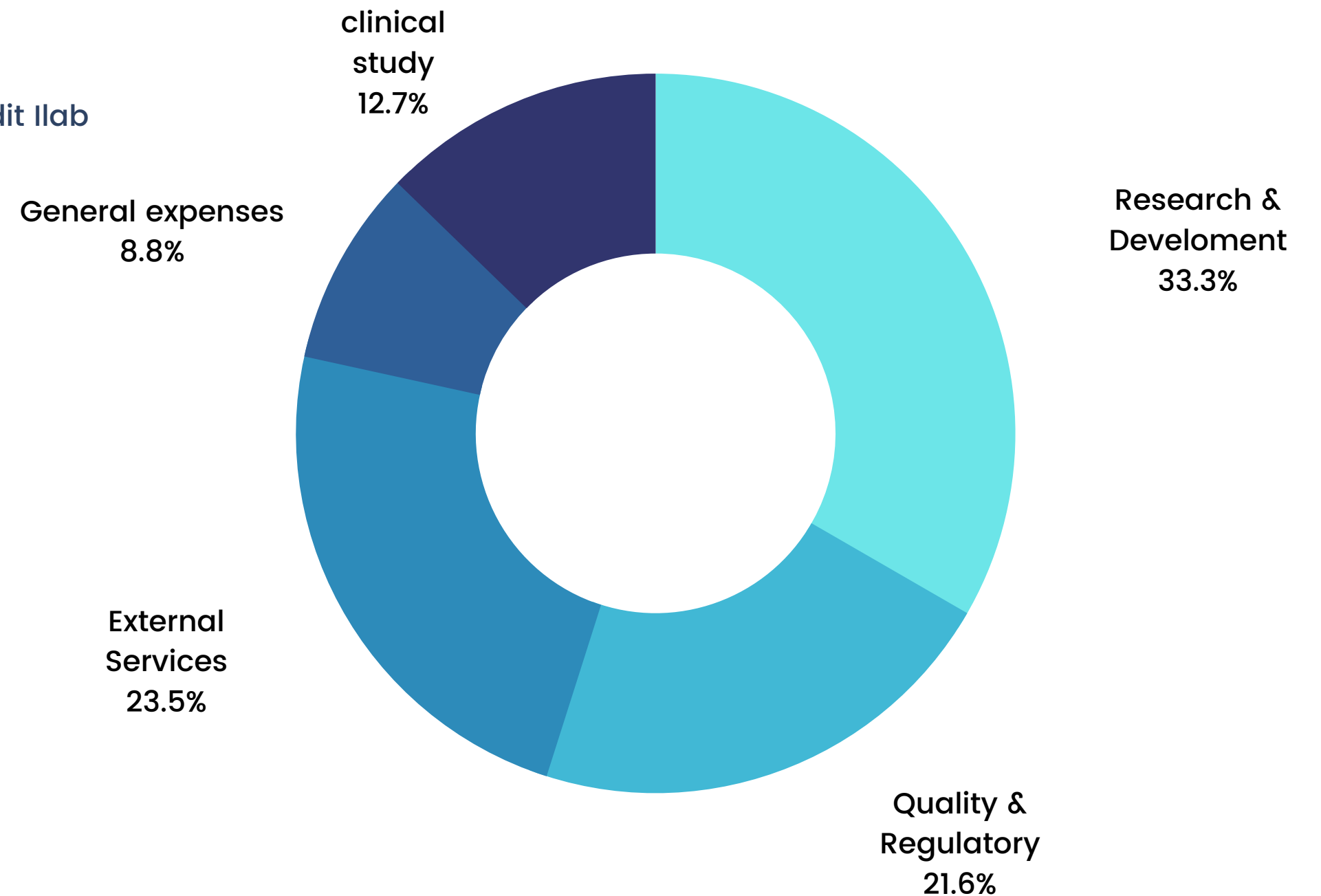
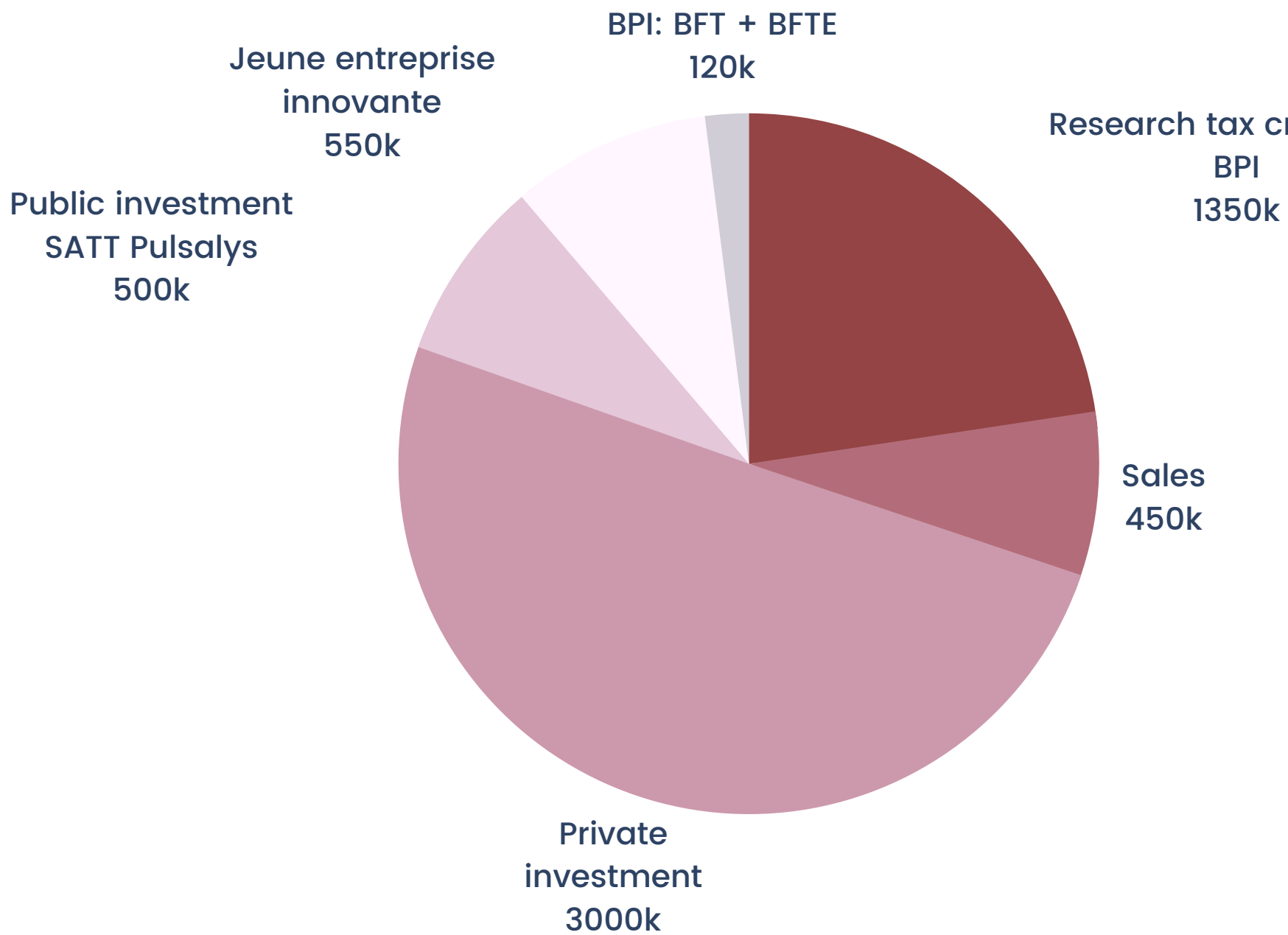
Market penetration Timeline



Leadership organizational chart



Fund Raising: 3 000 000 €



Total Budget: 6 millions euros

Distribution of expenditure

Contact

Benoit COSSET

benoit.cosset@chu-lyon.fr

+33661396292

www.linkedin.com/in/benoit-cosset-517619220