

COMMITTED TO REPLACING  
EMISSIVE MATERIALS  
WITH CARBON-EFFICIENT  
ALTERNATIVES



WE ARE  
HUMANS  
ENGINEERING  
NATURE



INVENTING  
UNPRECEDENTED  
TRANSLUCENT  
WOOD MATERIALS



## ●● PERFORMANCE OF OUR MATERIALS

---



Translucent



Touch-sensitive



Weatherproof



Excellent  
weight-strength  
ratio



3x stronger  
than wood

## ●● SUSTAINABILITY FACTS

---

### WOOD SOURCING

100% of our wood supplies comes from certified forests (mostly European)

### POLYMER SOURCING

We specifically choose recycled or bio-based resins allowing reuse, transformation, composting or recyclability

### ENERGY-EFFICIENCY

Our material is 17x less energy-consuming than glass, 130x less than steel and 475x less than aluminum



Low-grade  
wood compatible



Recyclable



Low CO<sub>2</sub> footprint

### END OF LIFE

Our materials can be recycled and reused into wood-plastic composites. We call it PULP: a moldable wood material that constitutes a virtuous alternative to injected plastics (packaging...).

#### ●● PULP™





# TRANSLUCENT SHEET OF AUTHENTIC WOOD

## ALTERNATIVE TO GLASS, ALUMINUM & MORE

Woodoo SLIM is a translucent sheet of authentic wood, available for various applications – from cladding and decoration to tactile interfaces – and in a large variety of wood species (sycamore, tulipwood, bird's eye maple, olive ash, beech...). This biomaterial offers unprecedented translucency and resistance, for many uses in interior design, smart surfaces (automotive, aeronautics...), lighting solutions, etc. With our multi-patented greentech, we transform conventional wood in what we call “augmented wood”, combining aesthetics and technological performance, naturalness and innovation.

### OUR MAIN SPECIES



Tulipwood



Bird's Eye Maple



Poplar



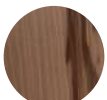
White  
Sycamore



Beech



Grey  
Tulipwood



Olive Ash



Dark Grey  
Tulipwood



### INTERFACES, DISPLAYS & LIGHTS

#### WOODEN SCREEN WALLS

An exclusive set of solutions for assembling giant screen walls covered with our patented translucent wood. Available in many different species.



## OUR MAIN APPLICATIONS

### MOBILITY



### CONSUMER



### RETAIL / INTERIORS



## ●● SWITCHR™

### GESTURE & TACTILE INTERFACES

A solution for wooden control panels, featuring both tactile and gesture control capacities.



## ●● LIGHTR™

### WALL LIGHT PANELS

An ambient lighting solution covered with authentic wood.





# HIGH RESISTANCE SOLID TIMBER

**ALTERNATIVE TO METAL, CONCRETE & MORE**

---

Woodoo STACK proposes blocks and boards of high-resistance solid timber, in various sizes and thicknesses. It can be machined to produce very high precision parts for fine watchmaking, jewellery, packaging... This low-carbon alternative prefigures the ranges of building materials we are developing for the construction industry to create facades, claddings, floors, ceilings, partitions and structural pieces for tomorrow's smart cities. We produce these high-resistance boards and blocks by layering and crossing different sheets of SLIM under controlled temperature and pressure conditions to the desired thickness (from 5 mm to 18 mm).



## OUR MAIN APPLICATIONS

---

### FINE WATCHMAKING



### LUXURY ACCESSORIES



## ●● ABOUT US

---

Woodoo is a carbon-efficient materials company. We strive to change the world by enabling its transition to sustainable solutions, to win the fight for decarbonization and against climate change.

As regenerative materials will play a leading role, we have chosen to mold and shape natural wood from regenerative forestry into materials with extraordinary performance, to help industries and corporations meet their carbon neutrality commitments.

---

## ●● SOME OF OUR CLIENTS

---

DAIMLER



LVMH

---

## ●● THE MOST AWARDED DEEPTECH IN EUROPE

---



Photo credits: Mathieu Génon, Gear Productions, Woodoo, Unsplash | V3.22

---

**SALES CONTACT: Serge MOUANGUE ● +33 6 58 39 31 48 ● serge@woodoo.com**  
**Woodoo SAS: Tour Montparnasse, 33 avenue du Maine, 75 015 Paris – FRANCE ● woodoo.com**

---