

SHERPA

MOBILE ROBOTICS



SHERPA® : SMART & MOBILE COLLABORATIVE ROBOTS

The safest, easiest and quickest solution to reduce pain, automate your transfers, streamline flows and increase productivity



Your Move to Smart Mobility

SHERPA® : a major step forward for our customers

Collaborative robotics is the future industry 4.0 standard

⋮

..... Market in very strong growth¹ (> +20% / year) and in this Market, the AMR² segment is growing even faster

Our SHERPA® range is in the "non-dedicated" AMR category

⋮

..... Adapted for all companies, a lot of use cases including at the same customer's premises

SHERPA® : SAFE - COLLABORATIVE - INTUITIVE - MULTIPURPOSE

⋮

..... On these characteristics, our robots are more efficient than AGVs or other AMRs

SIEMENS



socomec
Innovative Power Solutions



SAFRAN



CNH
INDUSTRIAL



¹ cf. numerous market studies

² unlike AGVs which have dedicated trajectories, AMRs are totally free

A technological breakthrough

Lidar

360° navigation sensor

Avoidance sensors

Spot obstacles in both directions

Sensitive bumper

Stops the robot in case of impact with an obstacle

Safety electronics

Validates that the instructions given to external elements (motors, sensors, etc.) are correct

3D Camera (option)

Navigation aid option, increases safety in specific environments

SAFETY : PLd level



Buzzer sound

Warns the presence of the robot

Identification leds

Indicate the status of the robot

Bluespot

Better visibility in the area nearby

Wifi (dual band)

Connection for administration and maintenance

USB interface

For updates of softwares

VISIBILITY

COMMUNICATION

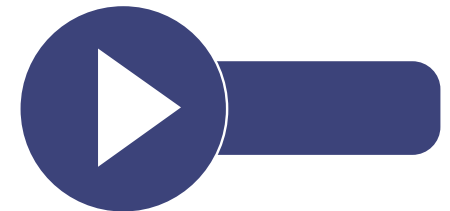
EASE OF USE

Extractable battery rack or inductive charging

Provides permanent availability

Touchscreen

Unlocking and initiating sequences



An AMR family with top technological setups

1 SAFE

PLd* level certified : safe alongside people, obstacles and transported material

Equipped with obstacles avoidance function, reversible to adapt to narrow routes

2 COLLABORATIVE

~~Able to combine «follow me» and «autonomous» modes, and to operate in fleet management~~

Less pain, more ergonomics and less non value-added tasks, brings more flexibility, streamlines flows

3 INTUITIVE

Plug & Play : requires no changes neither to existing facilities nor to customer's IT systems

Easy to setup and operate, simple user interfaces

4 MULTIPURPOSE

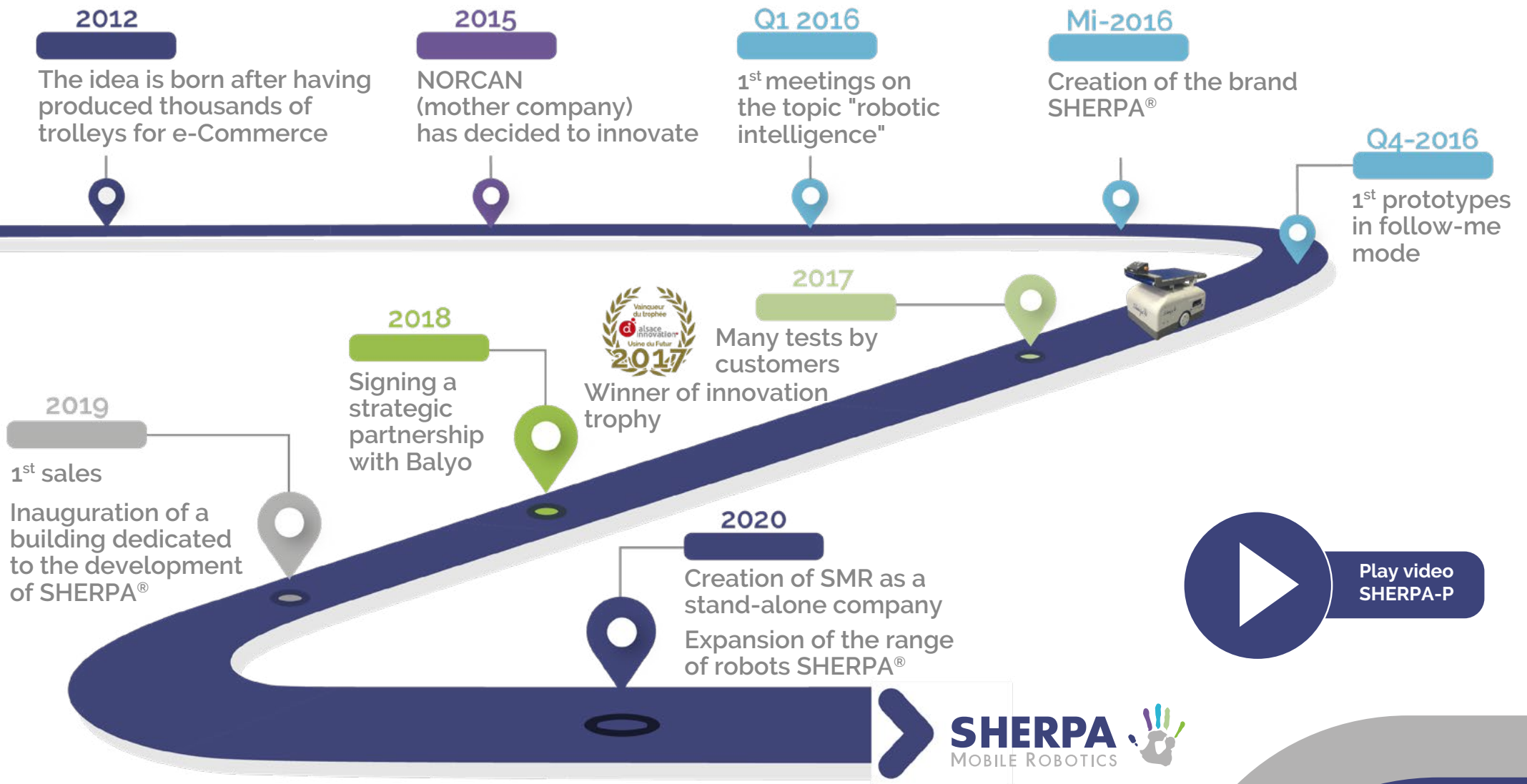
Options adapted to a large spectrum of use cases, sold complete and ready for use

Customers are keeping control to adapt configurations and missions by themselves



Around our robots : we offer a tailor-made and experienced support to answer a maximum number of applications

Origin of SHERPA® and of the company SMR : a partnership that creates value



2015 - 2019 : processed through NORCAN's innovations department
2020 : transfer of the activity in the new company SMR

SHERPA® : a range of robots, that are complementary

	SHERPA® - B serie		SHERPA® - P serie	
Main objective	Moving / transporting bins		Moving / transporting pallets	
Payload (up to)	100 kg	200 kg	500 kg	1.000 kg
Speed (up to)	7 km/h	4 km/h	7 km/h	4 km/h
Dimensions	950 x 600 x 650		1350 x 950 x 350	
Availability	Available		Q3 - 2020	

The lift, pull and all-pass functions are under development



Disinfection option available



A range of possibilities in order to perfectly fit to customer's needs

A rolling base which allows to choose :

the type of payloads, the operating modes, the driving direction, the user interface ...

Standard top-modules adaptable according to the needs :

fixed or specific tray, type of conveyor for automated loading/unloading operations

SHERPA-B
(for bins)



*Standard
or tailor made*

With a single tray



Conveyor / single



Conveyor / double



Conveyor / frontal

SHERPA-P
(for pallets)



Single tray



Pallet lift



Lift table

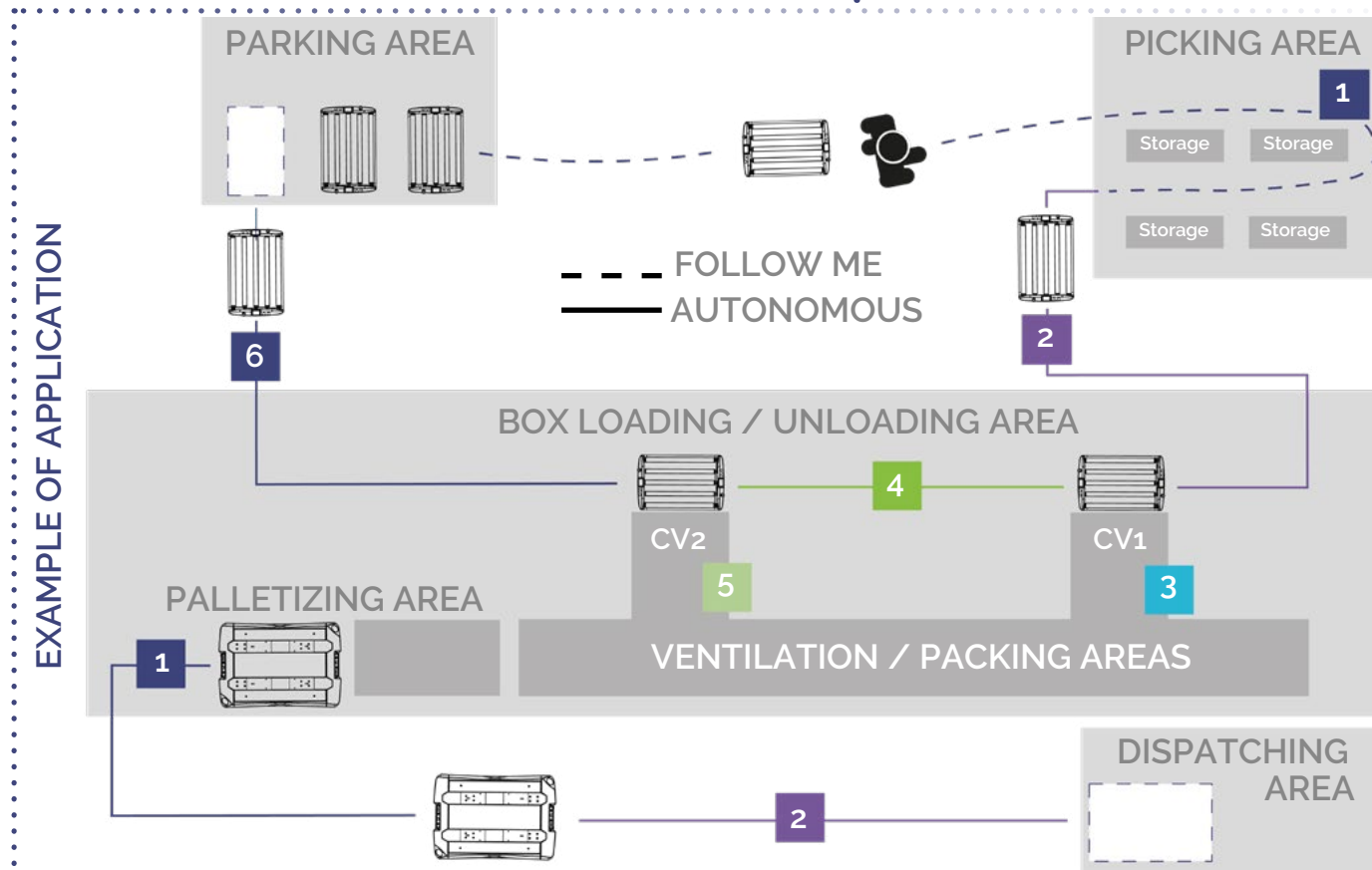
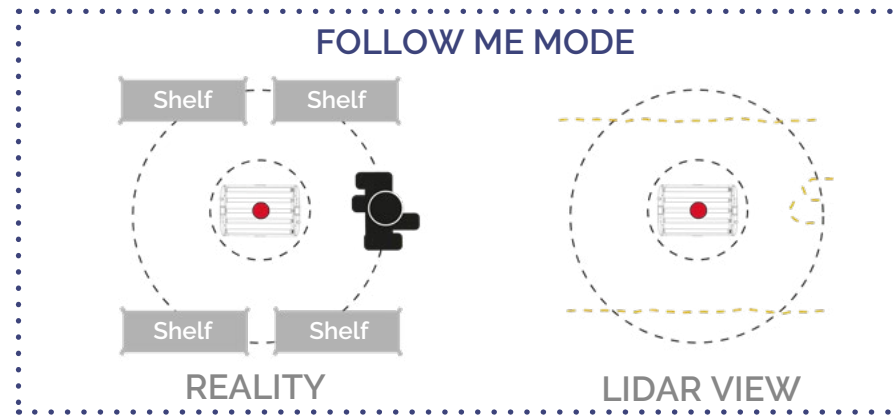
Others coming soon ...

A configurable software-suite according to the applications

Other options are available :

induction charger or battery charging unit, remote touch-screen, 3D-Camera, beside-me, integrating weighing system, external 48V power supply ...

Smart software modules, easy to setup and operate



CUSTOMIZED SEQUENTIAL STEPS

SHERPA-B

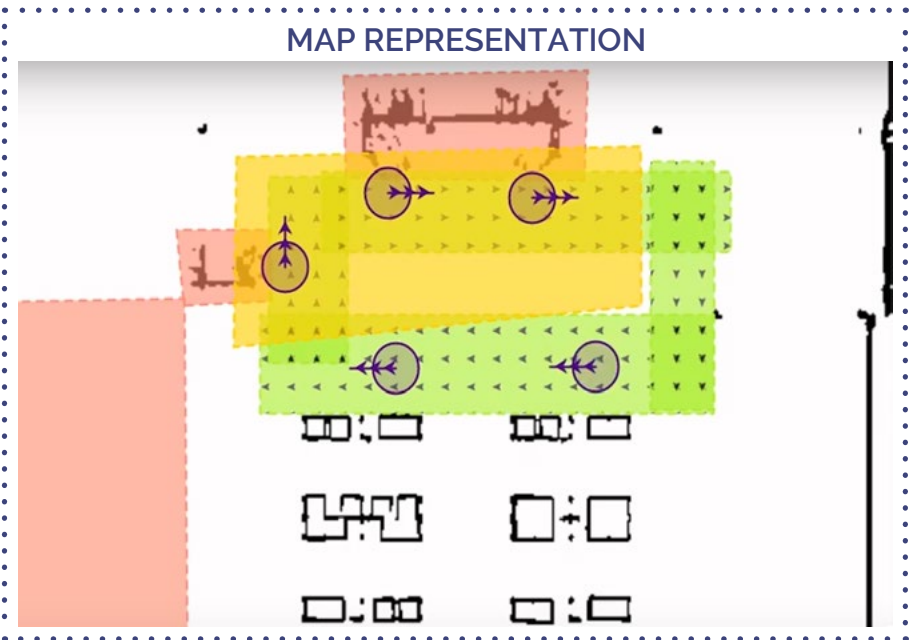
- 1** Picking
End of picking
- 2** To the conveyor 1
Arrival at CV1
- 3** Unloading full box
Box absence
- 4** To the conveyor 2
Arrival at CV2
- 5** Loading empty box
Box presence
- 6** To the parking

SHERPA-P

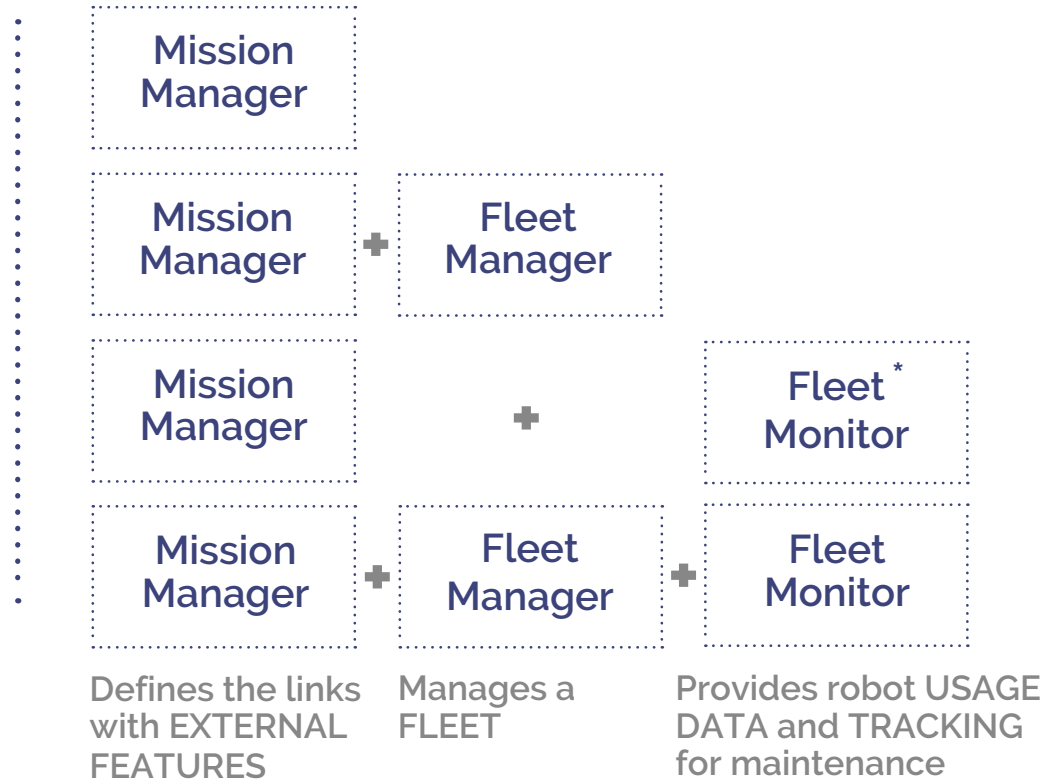
- 1** Loading full pallet
Pallet presence
- 2** To dispatching area

Smart software modules, easy to setup and operate

Integrated into the robot (with or without)



Remote from the robot



* available soon

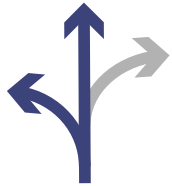
Many benefits for our customers



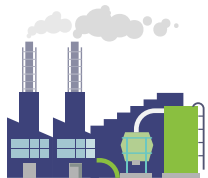
Less pain and risks in the transport of loads



Much more productivity through the drastic reduction of low value-added tasks



Greater flexibility and space savings by tending towards the «one-piece-flow»

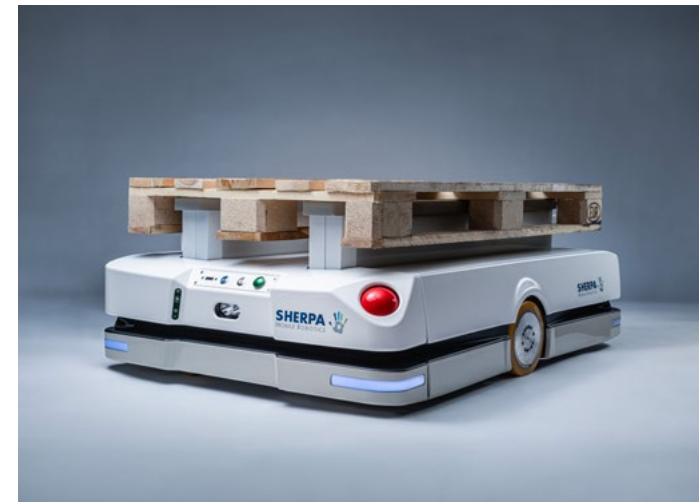


Usine 4.0

Allows innovative transformation to factories 4.0

In short : high operative and economical profits for our customers

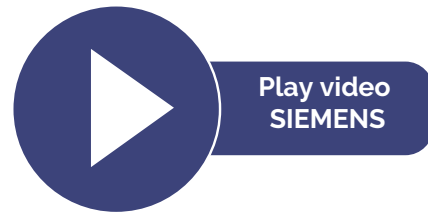
Return on Investment : 12 to 18 months



Solutions fully adapted to an infinite number of use cases



Customer's success stories



Customer testimonials



Michel - Head of debimetry department at SIEMENS

« Improvement of our logistics and future integration in our automated production lines and in our ERP system »



Benjamin - Industrial Projects Manager at SOCOMEC
Muriel - Digital Project Manager

« Very responsive and easy to implement. Can be coupled with peripherals (conveyors, robotic arms, ...)»



Benjamin - workshop technician at SIEMENS

« Less pain for our operators, ability to avoid obstacles and SMR's responsiveness to our problems »



Philippe - Industrial Director of Systems and Equipment at SAFRAN

« Automation of flows and limitation of manipulations that will protect the health of our operators »



Anthony - line operator and tester at SAFRAN

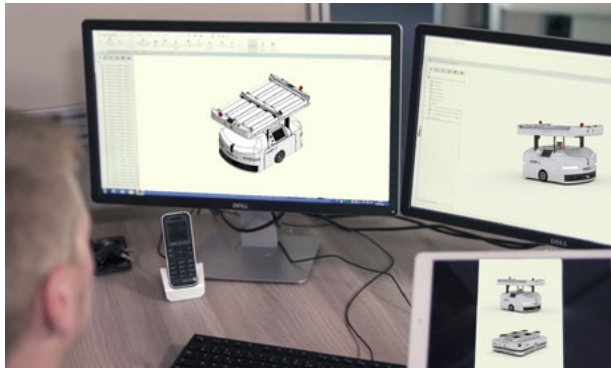
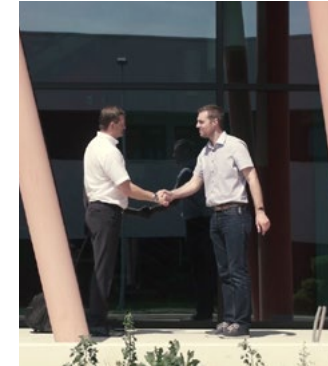
« An intuitive robot, easy to operate, which brings considerable time savings. *SHERPA : either you have it or you don't* »



Nicolas - AMR Project Manager at Siemens

« Intuitive, high-performance solution and quick user training »

A 100% mobilized team and perfectly adapted facilities



A much publicized robot

PRESS
RELEASE



Ergonoma



Point Éco



Les Echos



La Tribune



Industrie Mag



Robotik&Produktion



DNA



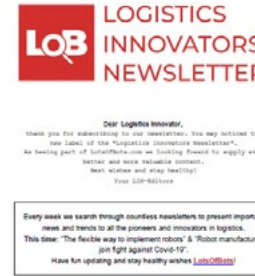
Usine Digitale



LSA



Themobilerobot guide



Lotsoftbots



Les Echos Entrepreneur



UIMM



Usine Nouvelle



BusinessMan.fr



Cadenas



Directindustry

SHERPA MOBILE ROBOTICS (SMR)

11 rue Ampère

 67500 Haguenau - France

 +33 3 88 93 26 36

 info@sherpa-mr.com

sherpa-mr.com 

Your Move to Smart Mobility