



## “Beyond the words”

Cryfe™ is a state-of-the-art software based on **behavioral analysis** and neuroscience.

Cryfe™ detects and highlights **all signals** emitted by your interlocutor, whether they are verbal (audio) or non-verbal (visual).

**Visual signals** read by Cryfe™

- Expressions
- Comfort gestures
- Pacificator
- Discomfort gestures

**Audio signals** read by Cryfe™

- Voice tone
- Positive or negative sentence

**The latest technologies** behind Cryfe™

- Signal processing
  - Image processing
  - Audio processing
- Gesture detection using computer vision and deep learning technologies
- Emotion and face expression detection using computer vision and deep learning technologies
- Conversation and speech analysis
  - Diarization
  - Speech analysis

Finally, information extracted from the images and audio of the video is then combined and interpreted using additional heuristics defined by experts in behavior to detect the congruency or incongruency, comfort or discomfort gestures as well as the emotions felt by the interlocutor.

**Congruence** means that all verbal and non-verbal cues are consistent with each other. A congruent person is **authentic**.

**Incongruence** happens when they are contradictory.

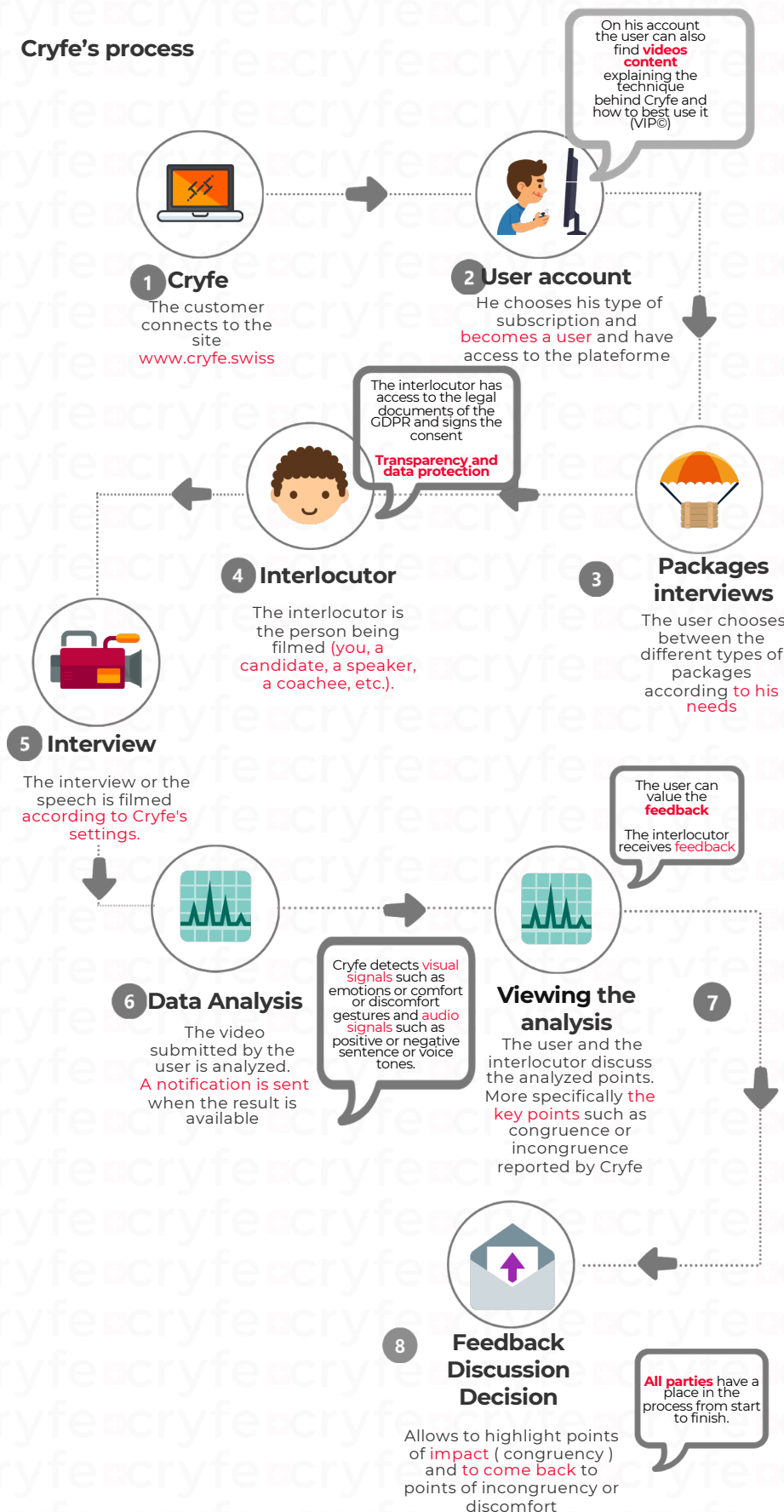
Cryfe's algorithms were collected in real situations and annotated by behavioral analysts and then reinforced.

**In brief:**

- Data annotations
  - More than **7000** events
  - Data labels **32** possible categories: **7** facial expressions and **25** body gestures
- Audio analysis
  - More than **100** hours



## Cryfe's process



**“Cryfe™ is an AI-powered software that analyzes people body language, voices and speech to detect authentic behaviors and enhance human communication”**